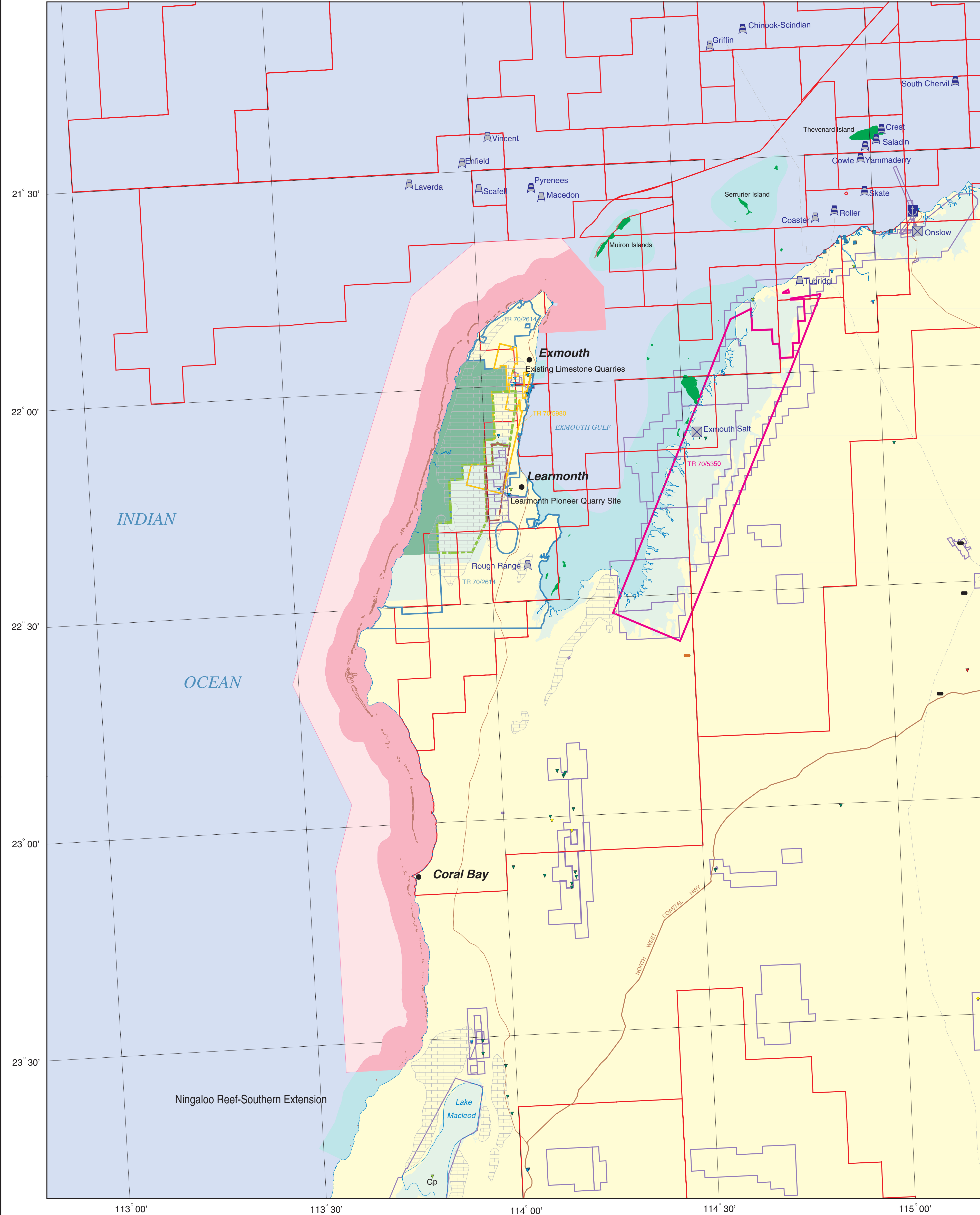


RESOURCE POTENTIAL FOR LAND USE PLANNING
CAPE RANGE – NINGALOO AREA



- Existing conservation estate
- Cape Range National Park
 - Terrestrial reserves managed by CALM
 - Ningaloo Marine Park
 - Ningaloo Marine Park (Commonwealth jurisdiction)
- Area subject to DoIR – CALM agreement of 1996
- Proposed National Park
 - Proposed Resource and Conservation Reserve for strategic limestone access
- Recommended conservation estate
- Red Book recommendations, various conservation purposes
 - Areas for consideration for Marine Reserve (Wilson Report)
- Petroleum occurrences
- Natural gas field
 - Oil field
 - Natural gas / oil field
 - Natural gas / condensate field
- Mineral occurrences, deposits, and mines by groups
- Precious metal
 - Steel industry metal
 - Speciality metal
 - Energy mineral
 - Iron
 - Industrial mineral
 - Base metal
 - Construction mineral
- Resource
- Silver
 - Manganese
 - Unspecified unless indicated; titanium, zircon
 - Uranium
 - Iron ore
 - Unspecified unless indicated; bentonite clay, dolomite, limestone, gypsum (Gp)
 - Unspecified unless indicated; copper, lead
 - Unspecified unless indicated; building material (crushed rock), clay
- 1904 Mining Act tenements
- Temporary Reserve TR70/5980, for limestone
 - Temporary Reserve TR70/2614, for limestone
 - Temporary Reserve TR70/5350, for salt
 - 1978 Mining Act tenements, current and applications
 - Petroleum (State and Commonwealth) titles, current and applications
 - Other land tenure

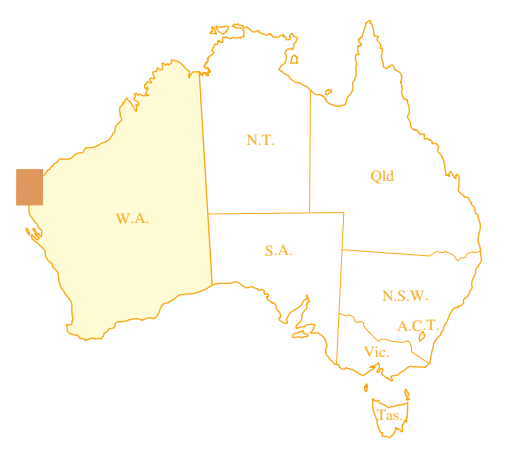
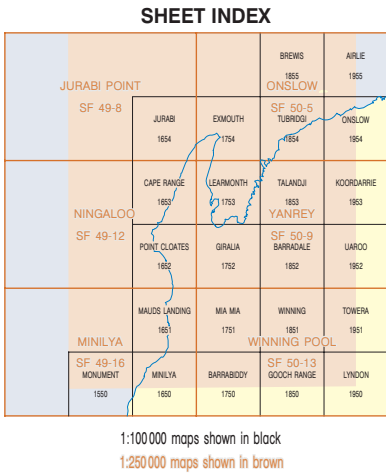
DATA DIRECTORY			
Theme	Data Source	Data Currency	Agency
Geology (Limestone)	YANREY-NINGALOO 1:250 000 Geological Series map (GSRM)	JAN 2004	Dept of Industry and Resources
Mineral locations (non-confidential)	WINNAND POOL - MIN 1:125 000 Geological Series map (GSRM)	JAN 2004	Dept of Industry and Resources
Mining Act tenements	MINDEX	JAN 2004	Dept of Industry and Resources
Petroleum Act titles	WAMIN	JAN 2004	Dept of Industry and Resources
Petroleum titles	TENGRAPH	DEC 2004	Dept of Industry and Resources
Customs	Map resource projects map (GSRM)	AUG 2002	Dept of Industry and Resources
Cape Range National Park	TENGRAPH	2004	Dept of Land Information
Ningaloo Marine Park	TENGRAPH	2004	Dept of Land Information
Proposed National Park	TENGRAPH	2004	Dept of Industry and Resources
Proposed Resource and Conservation Reserve	TENGRAPH	2004	Dept of Industry and Resources
Past Book Area	TENGRAPH	2004	Dept of Industry and Resources
Marine Reserve	WILSON REPORT	NOV 1994	Dept of Conservation and Land Management
Terrestrial reserves	TENGRAPH	2004	Dept of Conservation and Land Management
Topographic nomenclature	GENOMA	2001	Dept of Land Information
Topography		2002	Dept of Land Information

Compiled by M.J. Freeman, 2004
Cartography by S. Mulligan

The recommended reference for this map is:
FREEMAN M.J., 2004. Cape Range - Ningaloo area. Resource potential for land use planning, (scale 1:500 000):
Western Australia Geological Survey.

Published by the Geological Survey of Western Australia. Available in digital format (PDF) online at
www.doir.wa.gov.au/geology. Copies can be ordered from the Information Centre for the cost of the printing.
Information Centre, Department of Industry and Resources, 100 Plain Street, East Perth, WA 6004.
Phone (08) 9222 3459, Fax (08) 9222 3444

Email: geological.survey@doir.wa.gov.au



SCALE 1: 500 000

5000 0 20 40
Metres Kilometres

ALBERTS EQUAL AREA PROJECTION
Map Grid of Australia Zone 51

The Map Grid of Australia (MGA) is based on the Geocentric Datum of Australia 1984 (GDA84).
GDA84 positions are compatible with one metre of the datum WGS84 positions.

CAPE RANGE – NINGALOO AREA
RESOURCE POTENTIAL FOR LAND USE PLANNING

© Western Australia June 2004