

## Geological Survey of Western Australia, 2010

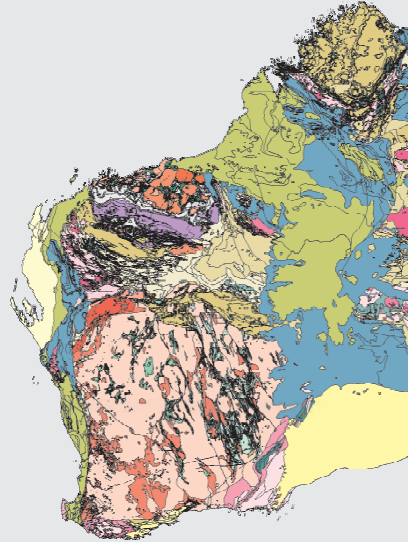
Providing the geoscience foundation for successful exploration and sustainable prosperity

The Geological Survey of Western Australia (GSWA) is a division of the Department of Industry and Resources. Since the 1880s GSWA has been gathering, synthesizing, and publishing information on the State's geology, and mineral and petroleum resources.

GSWA produces a huge collection of books, maps, and state-of-the-art databases for the benefit of the Western Australian community including prospectors, explorers, miners, and investors. This information provides the building blocks for the design of exploration programs in Western Australia. It is also critical to Government in determining policy and in decision making, particularly on economic and land use issues.

GSWA publications may be viewed or downloaded online FREE as PDF documents from the Geological Survey's Publications website or ordered and paid for through the Department's ebookshop.

- GSWA Key Contacts
- Key contact list.



## Geological Survey of Western Australia, 2010

Product available from First Floor counter, Mineral House, 100 Plain St, East Perth, WA 6004, AUSTRALIA. Or ordered through: [www.dmp.wa.gov.au/ebookshop](http://www.dmp.wa.gov.au/ebookshop)

Enquiries to Email: [gsd.dda@dmp.wa.gov.au](mailto:gsd.dda@dmp.wa.gov.au); Phone: +61 8 9222 3459; Fax: +61 8 9222 3444.

Cost: \$22 [inc. GST]