

REFERENCE

QUATERNARY: 0 Superficial deposits

PERMAN: P Poola Sandstone, Noonkanbah Formation and Livingstone Formation; Ps Grant Formation

DEVONIAN AND PREDEVONIAN: Dp Undifferentiated conglomerates

FAMERNIAN: Df Fairfield Formation; Df- Reef and inter-reef facies; Df- Bugle Gap Limestone; Df- Reef facies

FAMERNIAN - FRASNIAN: Df- Virgin Hills Formation; Df- Reef and inter-reef facies

FRASNIAN - GIVETAN: Df- Bobs Cove Conglomerate; Df- Windjana Limestone; Df- Reef facies; Df- Pillara Limestone; Df- Reef facies

FRASNIAN - GIVETAN: Df- Sadler Limestone; Df- Reef facies

FRASNIAN - GIVETAN: Df- Gogo Formation; Df- Reef facies

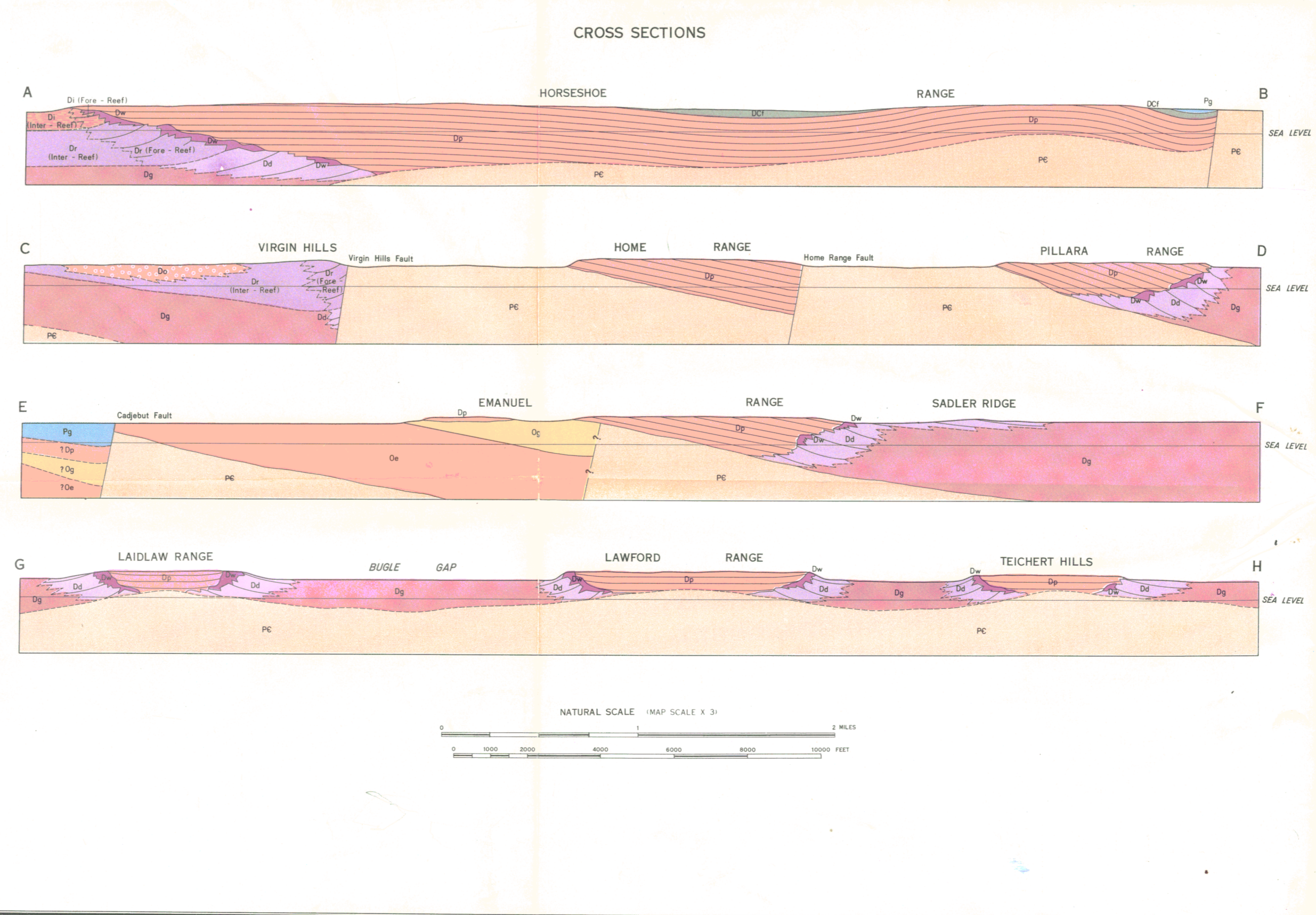
ORDOVICIAN: Gp Gap Creek Formation; Oe Emanuel Formation

PRECAMERIAN: Pc Basement complex

SYMBOLS

Geological boundary, position accurate
Geological boundary, position approximate
Trend lines
Fault - position accurate
Fault - position approximate
Inferred, concealed
Dip and strike of bedding
Horizontal bedding

Highway
Road
Track
Homestead
Yard
Trigonometrical station, minor
Elevation in feet
Telegraph line
Bore, well or waterhole
Windpump
Position doubtful
Dry well (abandoned)
Abandoned well with show of oil
Stratigraphic well



LOCATION DIAGRAM

SCALE 1:100,000

TRANSVERSE MERCATOR PROJECTION ZONE 3
The last three digits of the grid number are omitted
Grid interval 10,000 yards
Magnetic Declination approximately 3°E

GEOLOGICAL SURVEY OF WESTERN AUSTRALIA
CANNING BASIN
HULL RANGE -
EMANUEL RANGE AREA
Geology by P. E. Playford and D. C. Lowry 1963

PLATE 4