

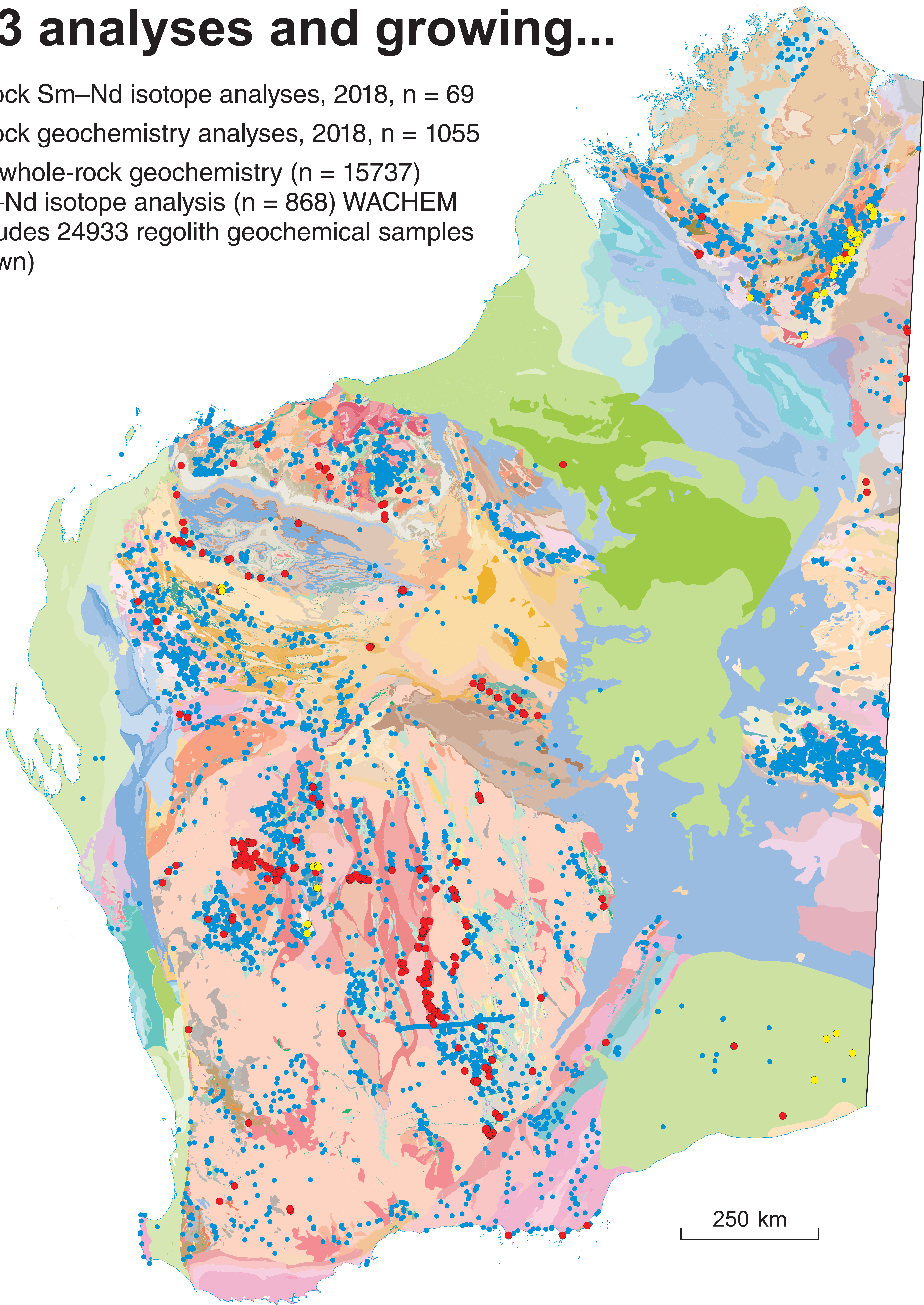
# GEOCHEMISTRY

## Western Australian Geochemistry database (WACHEM)

Ongoing acquisition of major, minor, trace element and isotope data

**42 663 analyses and growing...**

- Whole-rock Sm–Nd isotope analyses, 2018, n = 69
- Whole-rock geochemistry analyses, 2018, n = 1055
- Existing whole-rock geochemistry (n = 15737) and Sm–Nd isotope analysis (n = 868) WACHEM also includes 24933 regolith geochemical samples (not shown)



**New data in 2018 are from:**

- Yilgarn Craton (Eastern Goldfields Superterrane – see ‘Geochemical Barcoding’ poster, Youanmi and South West Terranes)
- Capricorn Orogen (Fortescue and Hamersley Basins, Gascoyne Province, Collier Basin)
- Canning Basin

## Access WACHEM via

### GeoChem Extract

[www.dmp.wa.gov.au/geochem](http://www.dmp.wa.gov.au/geochem)

or

### GeoVIEW.WA

[www.dmp.wa.gov.au/geoview](http://www.dmp.wa.gov.au/geoview)

