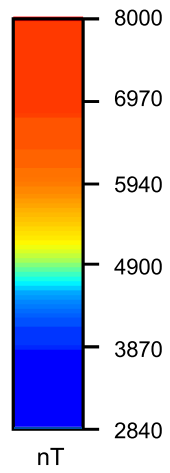
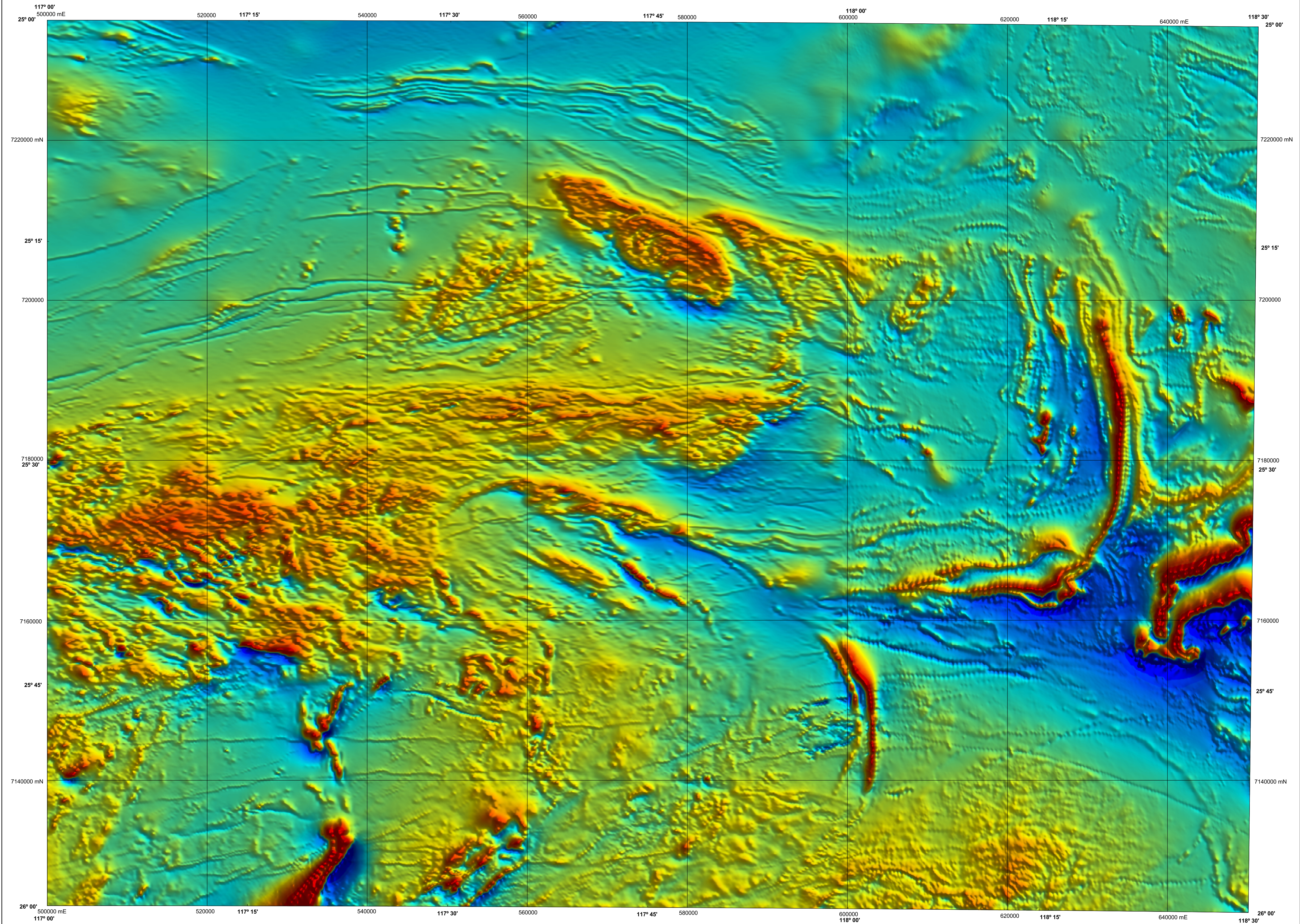


ROBINSON RANGE
GEOLOGICAL SURVEY OF WESTERN AUSTRALIA

1:250 000 TOTAL MAGNETIC INTENSITY IMAGE

SHEET SG 50-7



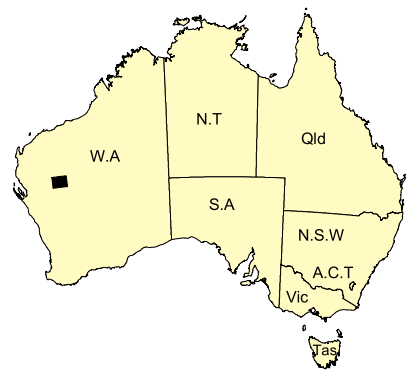
Data acquired in 2003 were merged by Geoscience Australia with previously acquired data, flown in 1994, and multi-client data, flown in 1996, purchased from World Geoscience Corp. IGRF 2003.8 removed. These data now form part of the National Airborne Geophysical Database.

Published by the Geological Survey of Western Australia. Copies are available from the Information Centre, Department of Industry and Resources, 100 Plain Street, East Perth, WA 6004. Telephone (08) 9222 3459, Fax (08) 9222 3444, www.doir.wa.gov.au

Secondary data processing: B. Bell
Image processing: J. H. Watt
Cartography: J. Simonetti
Geophysical Project Manager: S. H. D. Howard

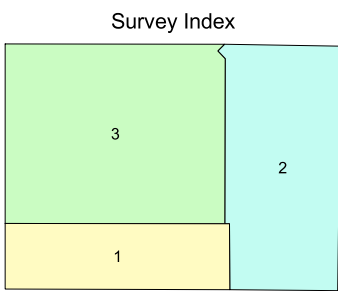
These data are available in digital form from the Sales Centre, Geoscience Australia, GPO Box 378, Canberra, ACT 2601. Telephone (02) 6249 9966, Fax (02) 6249 9982. Digital data are also available for download from Geoscience Australia, www.ga.gov.au/databases

The recommended reference for this map is:
GEOLOGICAL SURVEY OF WESTERN AUSTRALIA, 2004, Robinson Range, W.A. Sheet SG 50-7.
Western Australian Geological Survey, 1:250 000 Total Magnetic Intensity Image.



SHEET INDEX

MOUNT PHILLIPS SG 50-2	MOUNT ESBERTON SG 50-3	COLLIER SG 50-4
GLENBOROUGH SG 50-6	ROBINSON RANGE SG 50-7	PEAK HILL SG 50-8
BYRD SG 50-10	BELELE SG 50-11	GLENHARRY SG 50-12



The image is compiled from the three surveys that are listed below, the areas covered by each are shown on the survey index. The grid cell size is 80 m.

Survey ID	Survey name	Flight line spacing	Flight line direction	Ground clearance	Contractor	Date	Client
1	Belele Northwest	400 m	0° – 180°	60 m	Fugro	2003	GSWAGA
2	Peak Hill Area C	400 m	45° – 225°	60 m	TAG	1994	GSWA
3	Bangemall Basin	500 m	0° – 180°	60 m	WGC	1996	Multi-client data



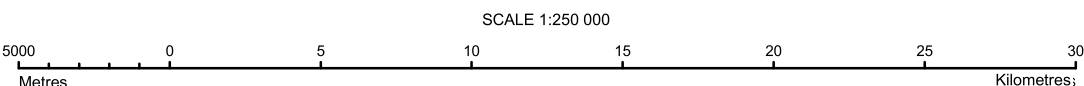
Department of
Industry and Resources

ALAN CARPENTER, M.L.A.
MINISTER FOR STATE DEVELOPMENT

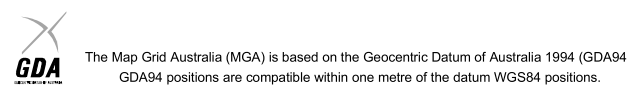
JILL LIMERICK
DIRECTOR GENERAL



NGA
PRODUCT OF THE NATIONAL
GEOSCIENCE AGREEMENT



UNIVERSAL TRANSVERSE MERCATOR PROJECTION
HORIZONTAL DATUM: GEODETTIC DATUM OF AUSTRALIA
Grid lines indicate 20 000 metre interval of the Map Grid Australia Zone 50



GEOLOGICAL SURVEY OF WESTERN AUSTRALIA

TOTAL MAGNETIC INTENSITY IMAGE

ROBINSON RANGE

SHEET SG 50-7

First Edition 2004

© Western Australia 2004

WARNING: Inks are water soluble and will fade with prolonged exposure to light