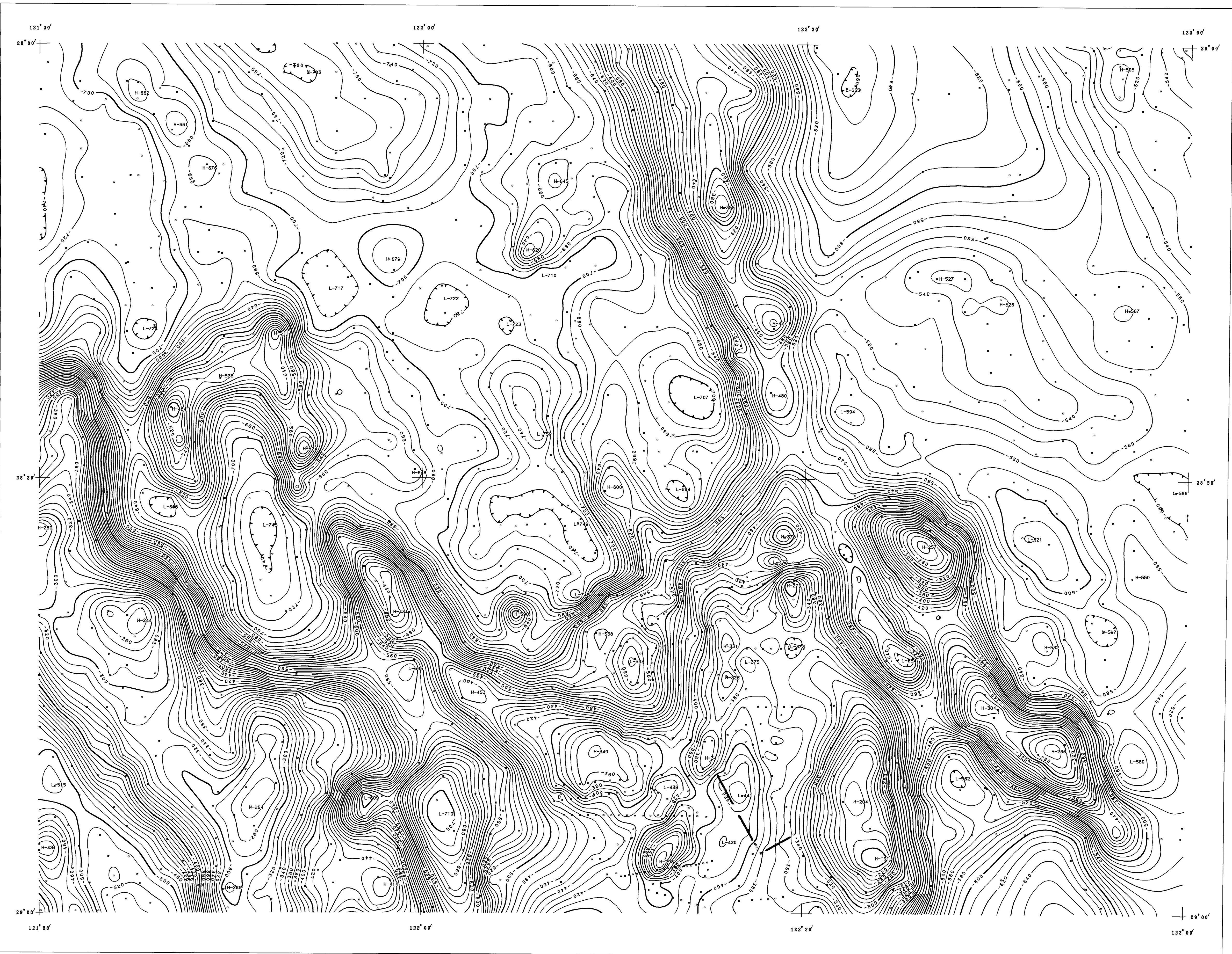


SCALE 1 : 250 000

LAVERTON

H51-2



GEOPHYSICAL MAPPING
GRAVIMETRY GROUP

Further copies of this map may be purchased from
AGSO Copy Service, Australian Geological Survey
GPO Box 378, CANBERRA, ACT 2601, FAX: 0612499884
and
Geological Survey of Western Australia, Mineral House
100 Plain St, EAST PERTH, WA 8004, FAX: 0912223633

COMPUTED 1993/03/24

DATA SOURCES

The data used to prepare this map were obtained from surveys carried out by AGSO, Geological Survey of Western Australia and private companies. All data are held in principal facts form and will be released in the AGSO National Gravity Database in late 1995. The principal facts for this Special map are available on disk for purchase from AGSO and GSWA. Gravity data compiled and edited by A.S.Murray and J.W.Williams.

DATA PROCESSING AND PRESENTATION

Gravity Datum 1984 Australian (seal) datum and scale. Compatible with 1959N7 (see GMR Report 261 - Gravity Base Station Network Values, Australia 1985).
Normal Gravity Geodetic Reference System 1967 (GRS67)
Bouguer Density 2.67 t/m³
Terrain Corrections No terrain corrections have been applied
Gravity Stations Are indicated by small squares
Contour Interval 10 m (heavy lines at 50 and 100 m)
Contour Accuracy ± 5 m at observation points
Contours The contours are computer generated from 1 kilometre grid values derived from the observations. Contours may not honour marked values where several close stations have been averaged during the gridding.



BOUGUER GRAVITY ANOMALIES CONTOURS

SCALE 1 : 250 000



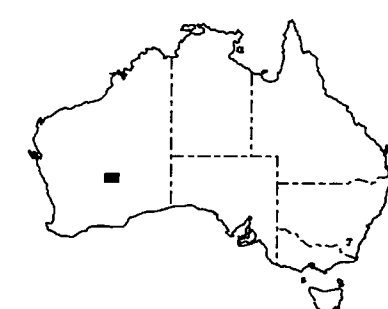
TRANSVERSE MERCATOR PROJECTION Zone 51 - Central Meridian 123° 0' East
AUSTRALIAN NATIONAL SPHEROID

© Commonwealth of Australia 1993

Persons purchasing copies of this map may reproduce it for their own use or for that of their staff, but not for any other purpose except with the written permission of the Director, AGSO, G.P.O. Box 378, Canberra, ACT 2601.

LEGEND

—200— Contour value
H256 Anomaly high
L-73 Anomaly low
• Gravity station



INDEX TO ADJOINING 1:250000 MAP AREAS

SIR SAMUEL G51-18	DUVERTON G51-14	THROSBELL G51-16
LEONORA H51-1	LAVERION H51-2	WASON H51-3
MERRIES H51-6	EDJODINA H51-8	MINIQUAL H51-7

LAVERTON
WESTERN AUSTRALIA
SHEET H51-2

The fill-in survey 9204 on this map has been a co-operative project between the Australian Geological Survey Organisation (AGSO) and the Geological Survey of Western Australia (GSWA) as part of the National Geoscience Mapping Accord. Gravity measurements for this survey were made by H.G.Reith (AGSO) and D.Reid and J.H.Watt (GSWA).