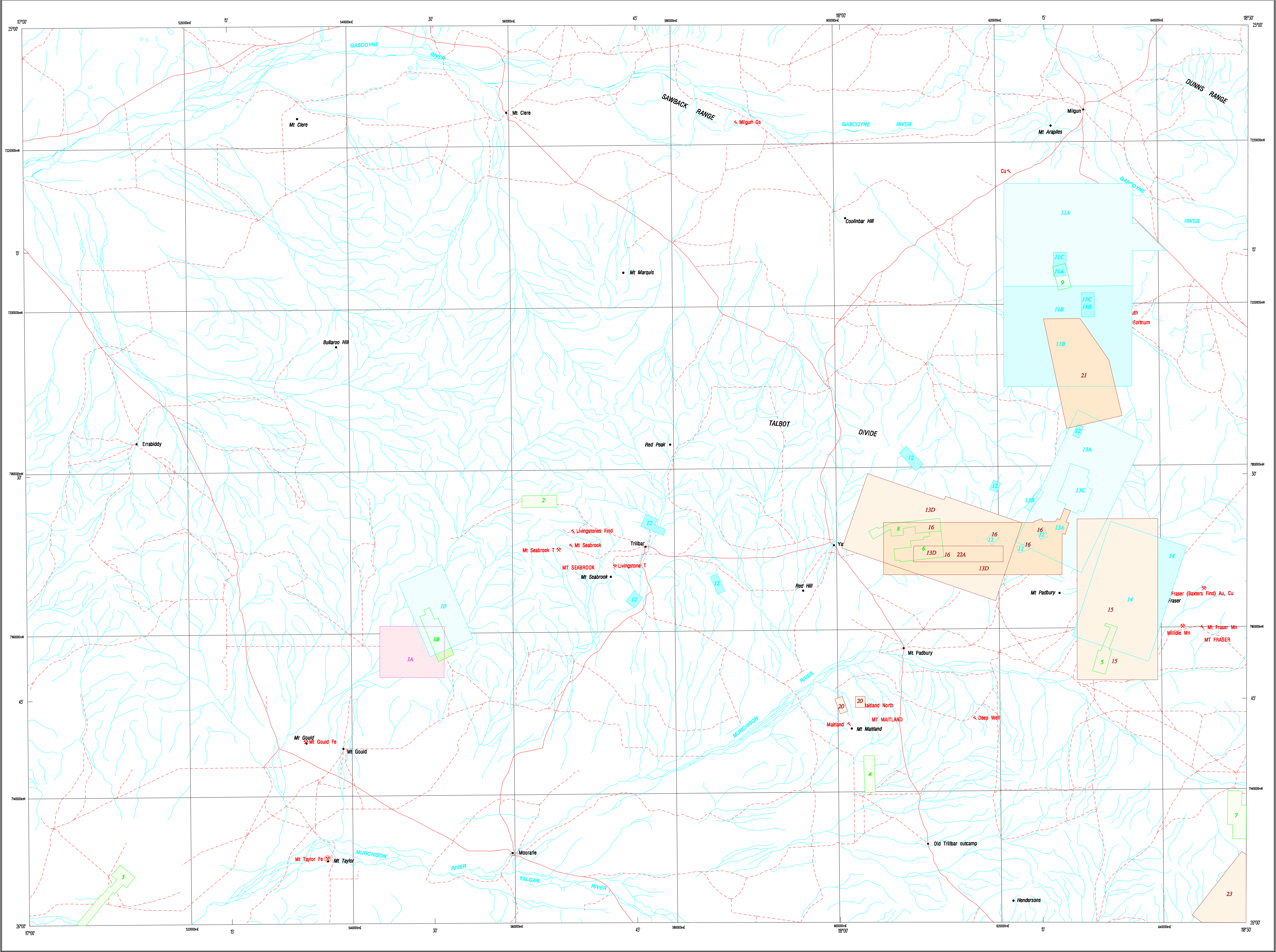


ROBINSON RANGE  
GEOLOGICAL SURVEY OF WESTERN AUSTRALIA



COMPANY PROJECTS WITH SURFACE  
GEOCHEMISTRY DATA IN OPEN-FILE  
REPORTS (at August 1995)

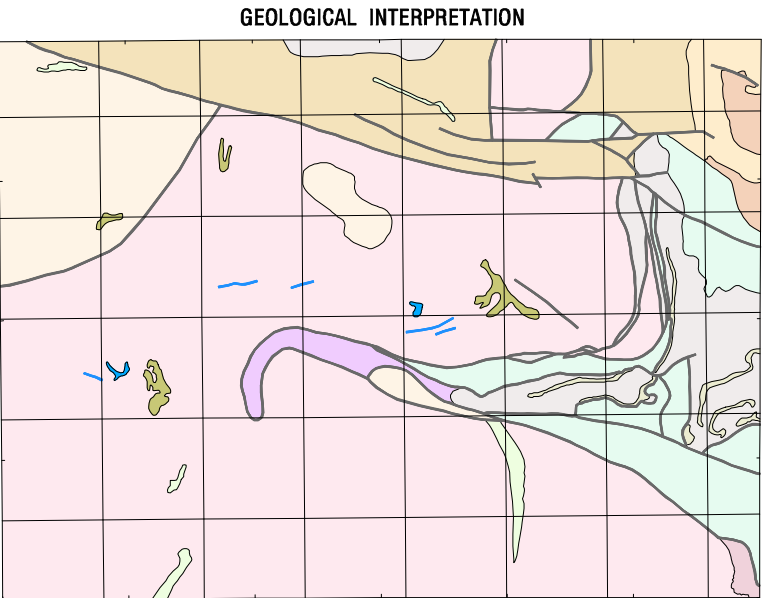
PROJECTS REPORTED BETWEEN 1966 AND 1985

**Period Project Reported Within**  
(Various colour shades used for ease of project identification)

	1966 - 1970
	1971 - 1975
	1976 - 1980
	1981 - 1985
	1986 - 1990
	1991 - 1995

Number within project area is a database ID number (See Appendix 3)

	Minor road
	Track
	Watercourse, ephemeral
	Homestead
	Locality
	Mining centre
	Major mine (incl. other otherwise indicated)
	Mine
	Minor mine
	Prospect
	Mineral occurrence
	Gold
	Copper
	Iron ore
	Variscite
	Manganese
	Talc



**Geological Interpretation**

Geological interpretation: After Ellis and Williams (1980); Myers, Occhipinti, and Swager (1986, pers. comm.)

**PROTEROZOIC**

- Bangemall Group
  - Quartz arenite; minor wacke, siltstone, conglomerate, shale, and dolomite
  - Shale and siltstone; minor chert, claystone, dolomite, and sandstone
  - Chert, arenite and siltstone, minor dolomite and shale
- Padbury Group
  - Wacke, siltstone, conglomerate, shale, quartz arenite, and calcareous sedimentary rocks
  - Granular and banded iron-formation, and hematitic shale
- Bryah Group
  - Sedimentary rocks, mafic and ultramafic volcanic and intrusive rocks, and banded iron-formation
- Yerrida Group
  - Quartz arenite, shale, and quartz-pebble conglomerate
- Trilbar Complex
  - Mafic to ultramafic volcanic and plutonic rocks

**ARCHAEO**

- Volcanic and sedimentary rocks (includes greenstones)
- Granite and granitic gneiss
- Banded iron-formation
- Amphibolite

Geological boundary  
Major fault or shear



SHEET INDEX		
MOUNT PHILLIPS SG 50-2	MOUNT EBERTON SG 50-3	COLLIER SG 50-4
GLENBURGH SG 50-8	ROBINSON RANGE SG 50-7	PEAK HILL SG 50-9
BYRO SG 50-10	BELLELE SG 50-11	GLENBARRY SG 50-12

INDEX TO 1:100 000 MAP SHEETS WITHIN ROBINSON RANGE 1:250 000		
ERRABIDDY 2347	MARQUIS 2447	MILGUN 2547
GOULD 2346	MOORARIE 2446	PADBURY 2546

COMPANY PROJECTS WITH SURFACE  
GEOCHEMISTRY DATA IN OPEN-FILE  
REPORTS (at August 1995)

ROBINSON RANGE

SHEET SG 50-7  
FIRST EDITION 1997  
© Western Australia

Edited by D. Ferdinando and G. Loan  
Cartography by G. Jose and D. Ladbroke  
Topography from Australian Surveying and Land Information Group Sheet SG 50-7 and roads modified from geological field survey (1998)  
This map was compiled digitally from the geochemical database held by the Geological Survey of Western Australia and stored in the ORACLE database management system; compiled and produced using a Geographic Information System, ArcInfo  
This map is also available in digital form  
Published by the Geological Survey of Western Australia. Copies of this map, or extracts from the database, are available from the Mining Information Centre, Department of Minerals and Energy, 100 Plain Street, East Perth, 6004. Phone (09) 222 8459, Fax (09) 222 3444



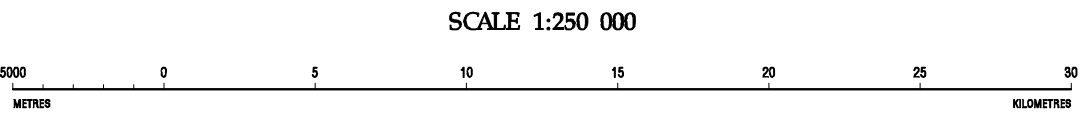
DEPARTMENT OF MINERALS AND ENERGY  
K.A. PERRY, DIRECTOR GENERAL



GOVERNMENT OF WESTERN AUSTRALIA  
HON. NORMAN MOORE, M.L.C.  
MINISTER FOR MINES



GEOLOGICAL SURVEY OF  
WESTERN AUSTRALIA  
PIETRO GULL, DIRECTOR



TRANSVERSE MERCATOR PROJECTION  
Grid lines indicate 20 000 metre interval of the Australian Map Grid Zone 50

Compiled by: J.A. Faulkner 1996  
Compiled from open-file company reports held by Geological Survey of Western Australia  
Tenement boundaries have been generalized for the purpose of this map to an accuracy of  $\pm$  50 - 500 metres. Refer to specific project reports for precise boundary descriptions.  
The recommended reference for this map is: FAULKNER, J.A., 1996, Robinson Range, W.A. sheet SG 50-7 -- Company projects with surface geochemistry data in open-file reports (at August 1995), projects reported between 1966 and 1985: Western Australia Geological Survey, 1:250 000 Regolith Geochemistry Series, Plate 3

WARNING: Inks are water soluble and will fade with prolonged exposure to light



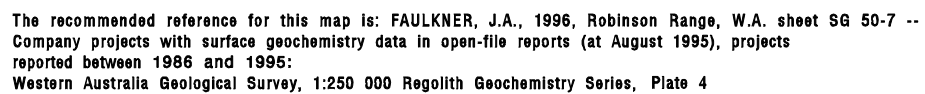


PLATE 4