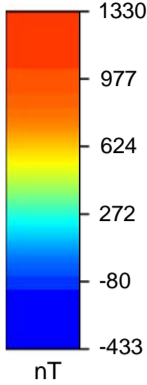
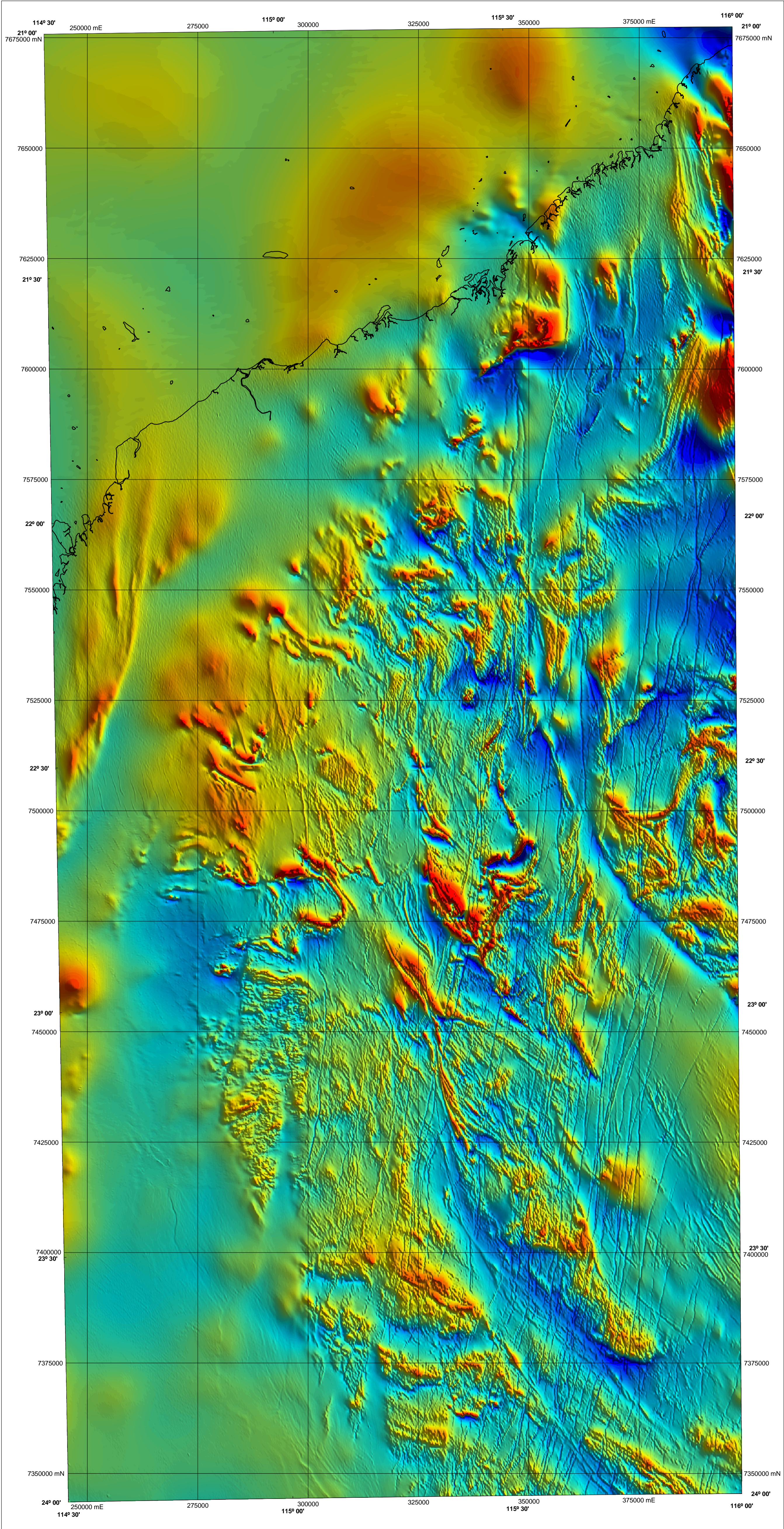


NORTH GASCOYNE

GEOLOGICAL SURVEY OF WESTERN AUSTRALIA

PART OF 1:250 000 SHEETS SF 50-5,
SF 50-6, SF 50-9, SF 50-10, SF 50-13, SF 50-14

1:500 000 TOTAL MAGNETIC INTENSITY IMAGE



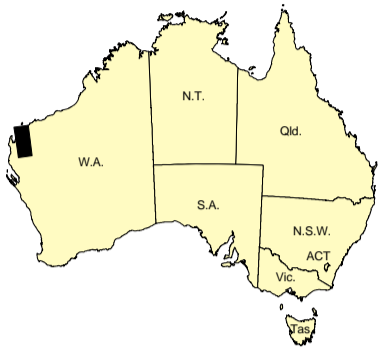
Data acquired in 2005–2006 were merged by Geological Survey of Western Australia with existing government and private company data flown between 1992 and 1995. These data now form part of the National Airborne Geophysical Database.

Published by the Geological Survey of Western Australia. Copies are available from the Information Centre, Department of Industry and Resources, 100 Plain Street, East Perth, WA 6004. Telephone (08) 9222 3459, Fax (08) 9222 3444, www.doir.wa.gov.au

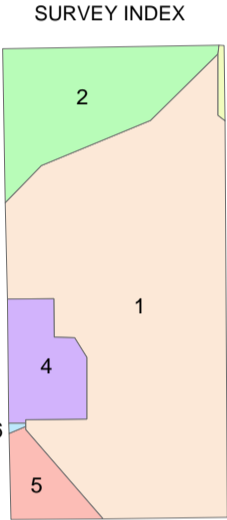
Compilation and Image processing J. H. Watt
Cartography J. Hogen-Esch
Geophysics Project Manager S. H. D. Howard

Individual located data sets and grids are available in digital form from the Sales Centre, Geoscience Australia, GPO Box 378, Canberra, ACT 2601. Telephone (02) 6249 9966, Fax (02) 6249 9960; or by download from Geoscience Australia, www.geoscience.gov.au/gadds

The recommended reference for this map is: GEOLOGICAL SURVEY OF WESTERN AUSTRALIA, 2006, North Gascoyne, W.A. Part Sheets SF 50-5, SF 50-6, SF 50-9, SF 50-10, SF 50-13, and SF 50-14: Western Australian Geological Survey, 1:500 000 Total Magnetic Intensity Image.



1:250 000 SHEET INDEX					
	BARROW ISLAND SF 50-1		CHAMPER SF 50-2		
JURASSI POINT SF 49-8	ONSLOW SF 50-3		YARRALLOOLA SF 50-4		
NINGALOO SF 49-12	YARREY SF 50-9		WYLOO SF 50-10		
MARLBOROUGH SF 49-16	WINNING POOL SF 50-13		EDMUND SF 50-14		
QUICKSAND SF 49-4	KENNEDY RANGE SF 50-11		MOUNT PHILLIPS SF 50-12		



The image is compiled from the six surveys that are listed below, the areas covered by each are shown on the survey index. The grid cell size is 80 m.

Survey ID	Survey name	Flight line spacing	Flight line direction	Ground clearance	Contractor	Date	Client
1	Gascoyne 2005	400 m	90° – 270°	60 m	UTS	2006	GSWA/GA
2	Barrow, Dampier	1000 m	150° – 330°	80 m	World Geoscience	1994	World Geoscience
3	West Pilbara	400 m	135° – 315°	60 m	TAG	1995	GSWA/GA
4	Barradale	300 m	0° – 180°	60 m	Kevron	1992	CRAE Pty Ltd
5	Merlinleigh-Byro	500 m	67° – 247°	80 m	TAG	1995	GSWA
6	P198	1600 m	90° – 270°	150 m	BMR	1959	BMR



Department of
Industry and Resources

Geological Survey of
Western Australia

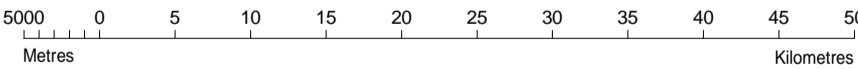


Australian Government
Geoscience Australia

NGA

PRODUCT OF THE NATIONAL
GEOSCIENCE AGREEMENT

SCALE 1:500 000



UNIVERSAL TRANSVERSE MERCATOR PROJECTION
HORIZONTAL DATUM: GEODETIC DATUM OF AUSTRALIA
Grid lines indicate 25 000 metre interval of the Map Grid Australia Zone 50



The Map Grid Australia (MGA) is based on the Geocentric Datum of Australia 1994 (GDA94).
GDA94 positions are compatible within one metre of the datum WGS84 positions.

GEOLOGICAL SURVEY OF WESTERN AUSTRALIA

TOTAL MAGNETIC INTENSITY IMAGE

NORTH GASCOYNE

PART OF 1:250 000 SHEETS
SF 50-5, SF 50-6, SF 50-9,
SF 50-10, SF 50-13, SF 50-14

First Edition 2006

Version 1.0 — June 2006

© Western Australia 2006

WARNING: Inks are water soluble and will
fade with prolonged exposure to light.