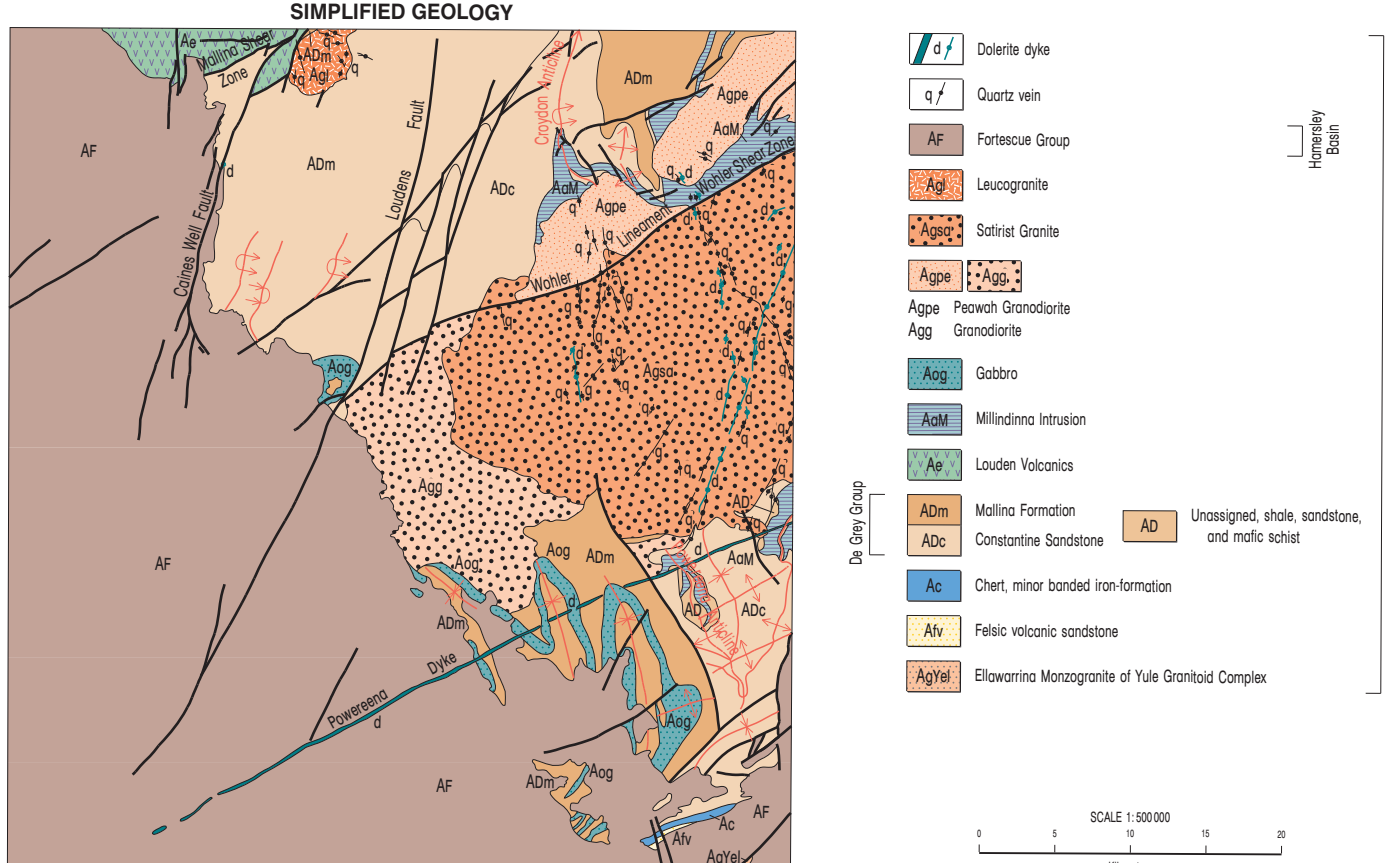


True north, grid north and magnetic north are shown diagrammatically for the centre of the map. Magnetic north is based on the 1980 and moves slowly by about 0.1° in 2 years.



Geology by R. H. Smith 1986  
Edited by N. Telford, C. Shing, and G. Loom  
Cartography by S. Caldwell and E. Green  
Topography from the Department of Land Administration Sheet SF 50 7 2455, with modifications from geological field survey.  
Published by the Geological Survey of Western Australia. Copies available from the Information Centre, Department of Minerals and Energy, 100 Peel Street, Gold Perth, WA, 6000. Phone 08 9252 3400. Fax 08 9252 3444.  
This map is also available in digital form.  
Printed by the State Print Group, Western Australia.  
This representation is for the map in the  
SMITHS, R. H.: 1986, Mount Wohler, W.A. Sheet 2455, Western Australia Geological Survey, 1:100 000 Geological Series.

