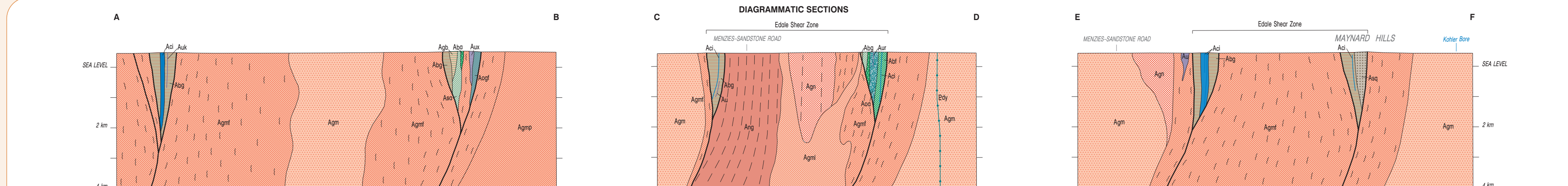
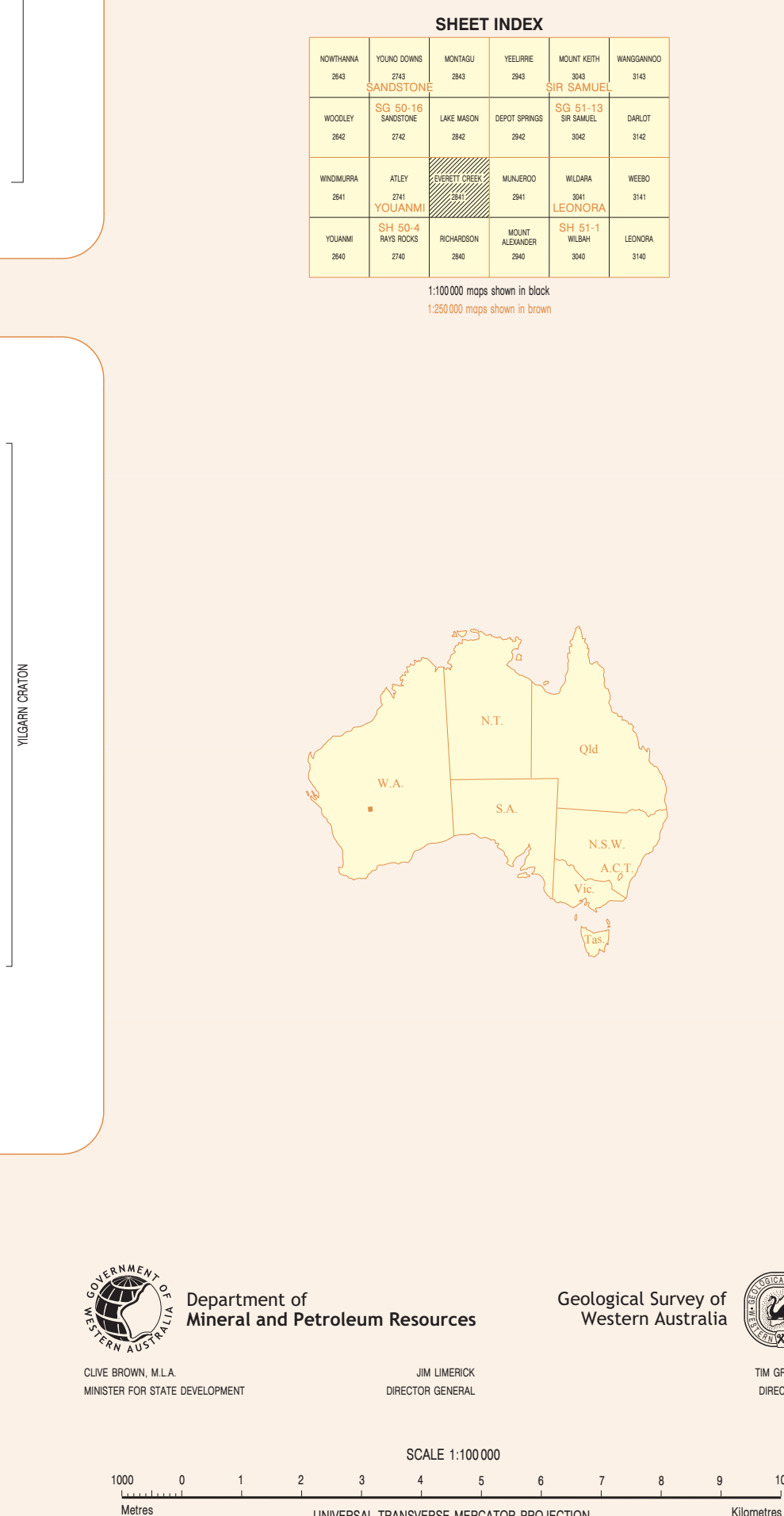
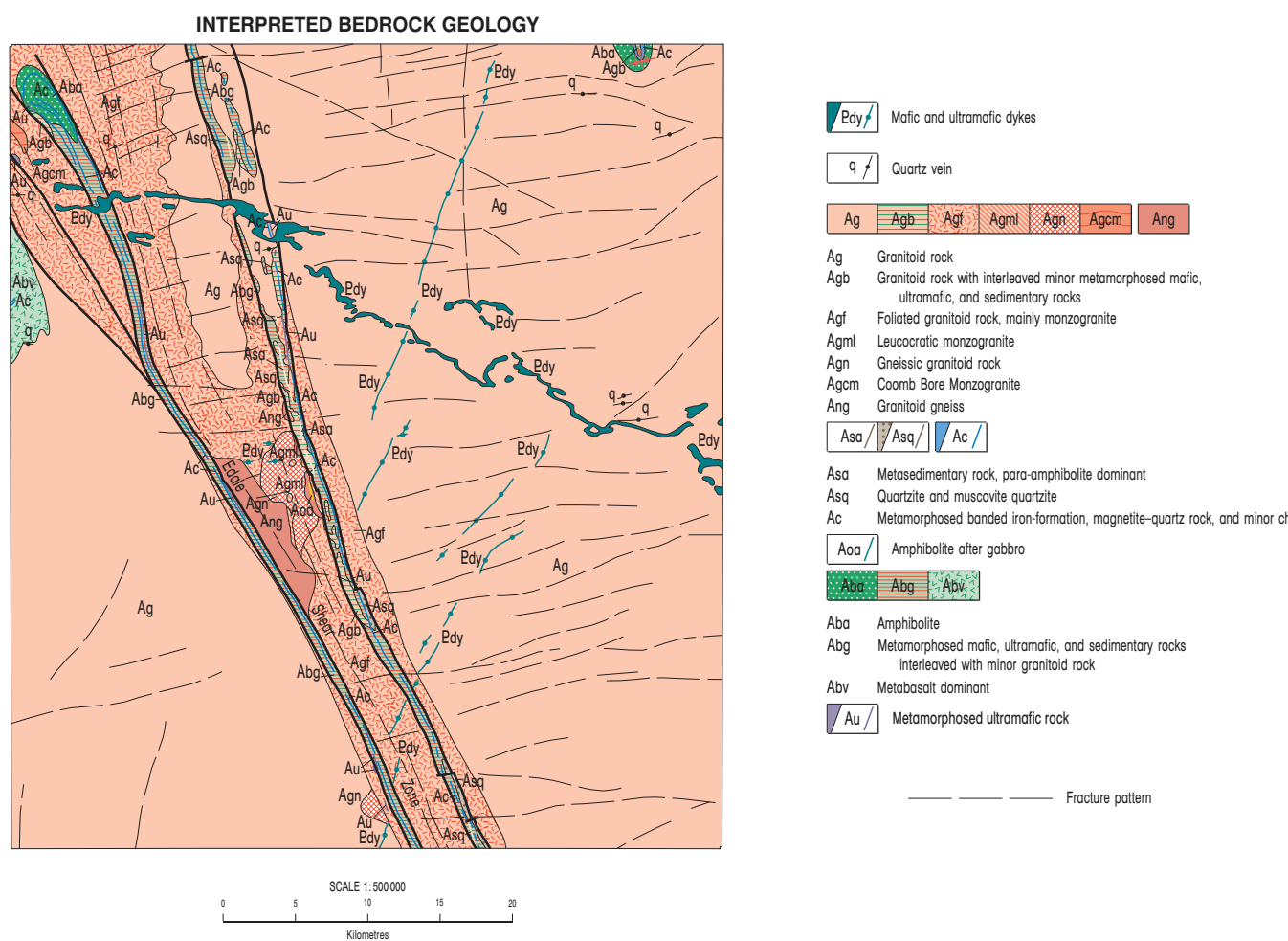


SHEET INDEX

NORTHMAN 204	YOUNG CORNE 210	MONTAG 204	YELLER 204	MOUNT KEN 210	WAGGARD 210
SANDSTONE		SIR SAMUEL			
WOLLEY 204	SG 50-16 SANDSTONE 210	WAIN ANDIN 210	DEPT SPRING 204	SG 51-13 SR DAMEL 204	DARLET 210
WIDEMAN 210	ATLEY 210	HARVEY CHALK 210	MUNROCK 204	WILGAM 204	WILBO 210
SH 50-4 YOLANMI		LEONORA			
YOLANMI 204	SH 50-4 NITS KOGI 210	ROCKMORIN 210	MOUNT ALWAZER 204	RUHAM 210	LEONORA 210



Geology by A. Riganti 2000
 Edited by F. Edlison
 Geochronology by:
 D. R. Nelson, 2002, Record 2002/2, p.222-228.
 Corrigendum by D. Ludbrook, T. Pizzi, and K. Greenberg
 Topography from the Department of Land Administration Sheet SH 50.04, 2841,
 with modifications from geological field survey
 Published by the Geological Survey of Western Australia. Digital and hard copies
 of this map are available from the Information Centre, Department of Mineral and Petrol
 Resources, 110 Pin Street, East Perth, W.A. 6004. Phone (08) 9222 3459, Fax (08) 9222
 76. Web www.mpr.wa.gov.au Email geological_survey@mpr.wa.gov.au
 Plotted by the Geological Survey of Western Australia
 The recommended reference for this map is:
 RIGANTI, A., 2002, Everett Creek, W.A. Sheet 2841: Western Australian Geological Survey
 1:100,000 Geological Series

