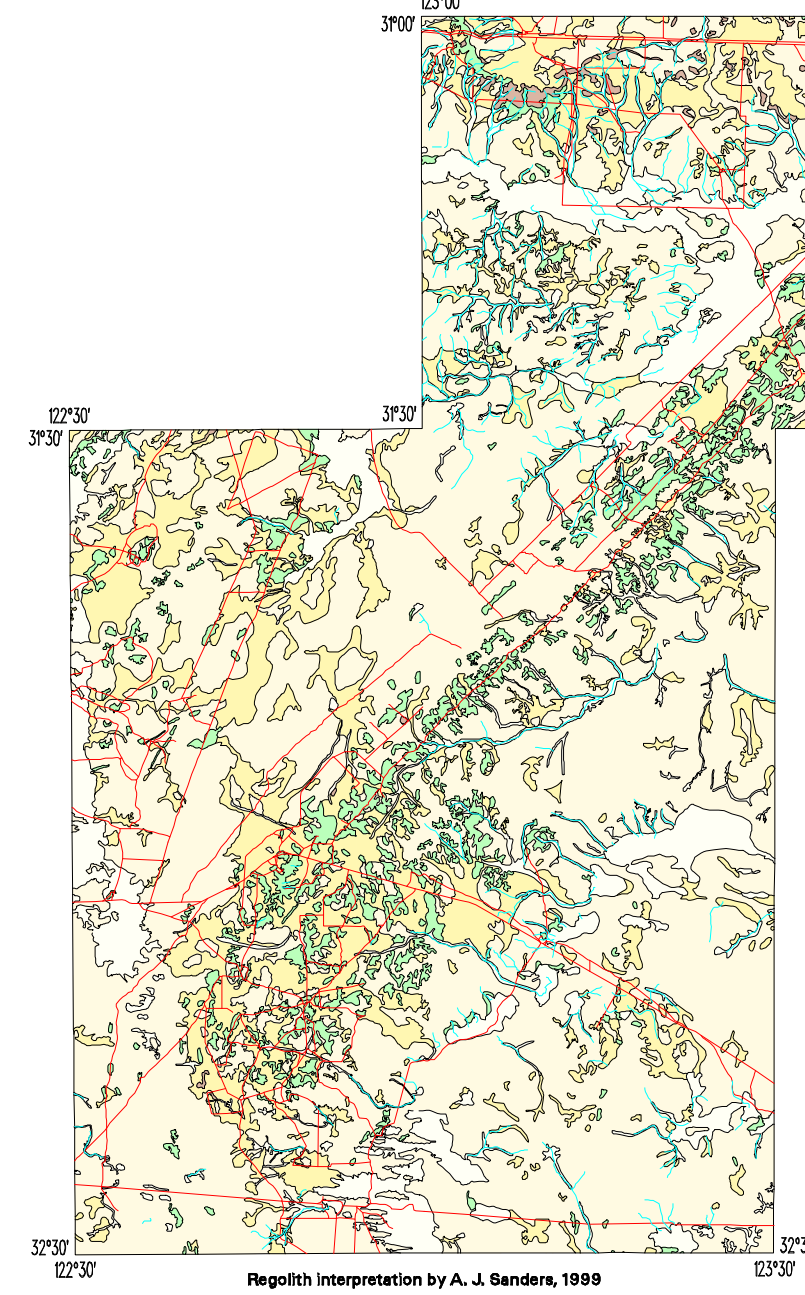


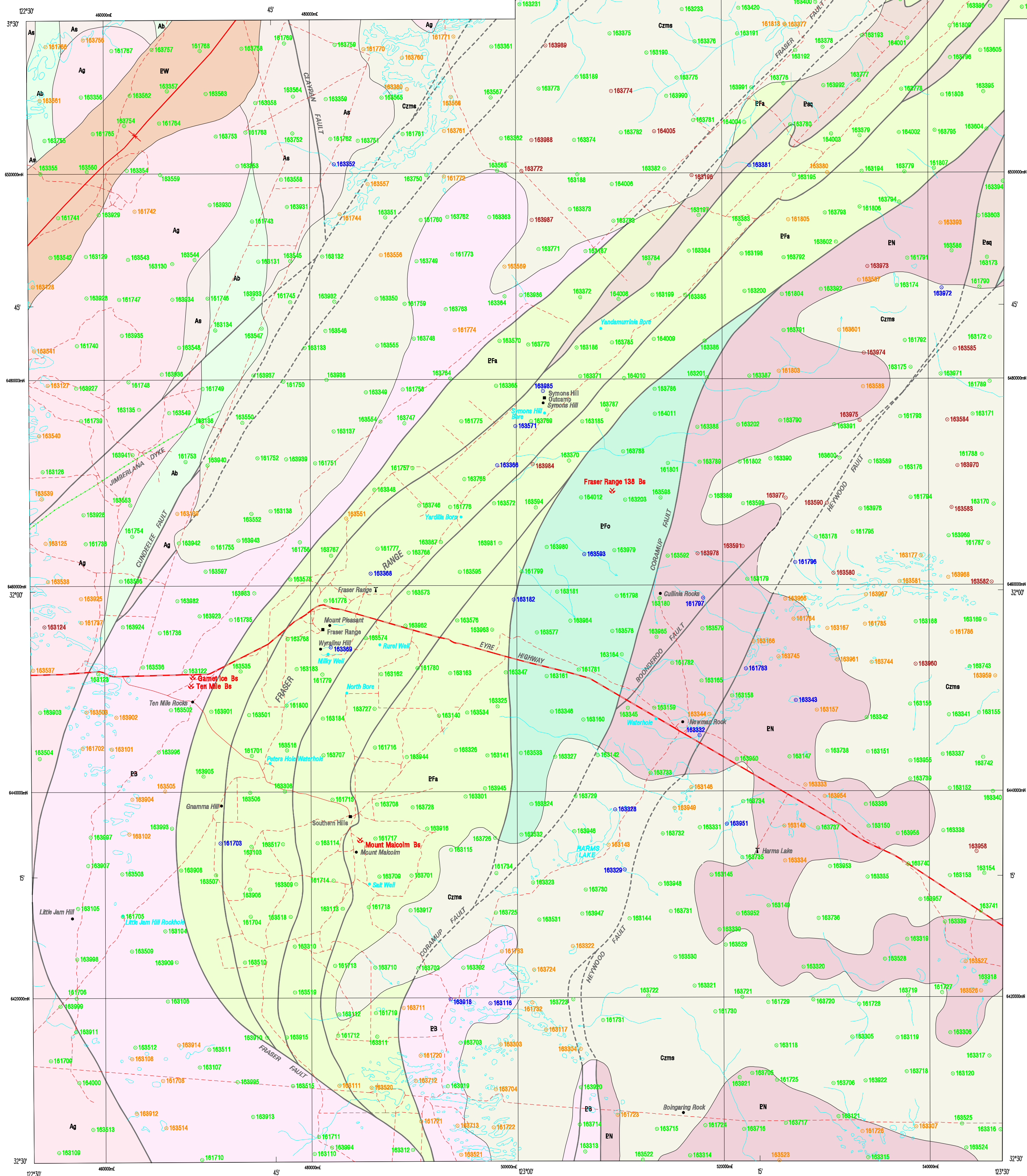
FRASER RANGE REGION

GEOLOGICAL SURVEY OF WESTERN AUSTRALIA

GENERALIZED REGOLITH INTERPRETATION



Regolith interpretation by A. J. Sanders, 1999



SAMPLE LOCATIONS

Sample point reference

- 163972 Stream sediments
- 161700 Sheetwash
- 163001 Lake sediments
- 163555 Sandplain

SYMBOLS

- Highway
- Minor road
- Track
- Railway
- Watercourse
- Lake
- Homestead
- Locality
- Microphone repeater station
- Quarry
- Prospect
- Mineral occurrence
- Bt Barite
- Be Bismuth
- Vm Vermiculite

GEOLOGICAL INTERPRETATION

- CANADIAN**
 - Czmk Marine limestone, minor marine sandstone, and continental sandstone
 - Czms Marine limestone; marine and continental sandstone, lignite, and spongiolite
- NORNALUP COMPLEX**
 - EN Granitic gneiss and granite
- FRASER COMPLEX**
 - EFa Amphibolite (pyroxene- and garnet-bearing) and metagabbro
 - EFg Gneiss and metasedimentary rocks
 - EFo Metagabbro and amphibolite
 - EB Granitic gneiss
- WOODLINE BEDS**
 - EW WOODLINE beds: arenaceous and argillaceous metasedimentary rocks, including silicified metaevaporites
- MAFIC AND ULTRAMAFIC DYKE**
 - Mafic and ultramafic dyke
- ARCHAIC**
 - Ag Granitoid rock
 - As Pelitic and psammite metasedimentary rocks with metaconglomerate, metachert, and metamorphosed felsic volcaniclastic rocks
 - Ab Mafic schist, metabasalt, metadiorite, and amphibolite; with intercalated metasedimentary rocks
- Geological boundary**
- Exposed fault**
- Concealed fault**
- Syncline**



GOVERNMENT OF WESTERN AUSTRALIA
HON. NORMAN MOORE, M.L.C.
MINISTER FOR MINES



ACSO
AUSTRALIAN COASTAL SURVEY



NGMA
PRODUCT OF THE NATIONAL
GEOSCIENCE MAPPING ACCORD



GEOLOGICAL SURVEY OF
WESTERN AUSTRALIA
DAVID BLIGHT, DIRECTOR



DEPARTMENT OF MINERALS AND ENERGY
L. C. RANFORD, DIRECTOR GENERAL

SCALE 1:250 000

TRANSVERSE MERCATOR PROJECTION
HORIZONTAL DATUM: AUSTRALIAN GEODETIC DATUM 1984
VERTICAL DATUM: AUSTRALIAN HEIGHT DATUM
Grid lines indicate 20 000 metre interval of the Australian Map Grid Zone 51

Edited by N. Telford and G. Loan
Cartography by G. Jones

Topography from Australian Surveying and Land Information Group
and modified from geological field survey (1980)

This map was compiled and produced using a Geographic Information System (ARC/INFO),
and the data are available in digital form

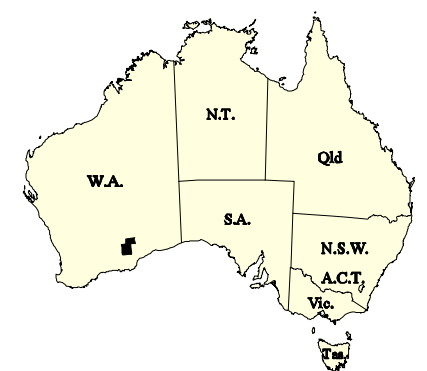
Published by the Geological Survey of Western Australia. Copies of this map, or extracts of
the data, are available from the Information Centre, Department of Minerals and Energy,
100 Plain Street, East Perth, W.A. 6004. Phone (08) 9222 3459, Fax (08) 9222 3444

Sampling by K. Pys, S. Shevchenko, M. Painter, A. Rignell, J. Watt, and
B. Greenwald (from GSMA), S. Baeleou, J. Hanson, A. Lee, S. McGuinness, 1998

Analysed: Amel Laboratory. Minimum sample size: 1.5 kg.
Fraction of sample analysed: > 0.45mm < 2mm

Geological interpretation after Myers and Hemmings (1998).

The recommended reference for this map is:
MORRIS, P. A., SANDERS, A. J., MCGUINNESS, S. A., COKER, J. and KING, J. D., 2000,
Sample locations, Fraser Range region, in: Geological mapping of the
Fraser Range region by P. A. MORRIS, A. J. SANDERS, S. A. MCGUINNESS, J. COKER,
and J. D. KING. Western Australia Geological Survey, 1:250 000
Regolith Geochemistry Series Explanatory Notes, Plate 2



SHEET INDEX

KALGOORNEY SH 51-4	KIMBERLEY SH 51-5	CUNDEELEE SH 51-11	SEWING SH 51-12
BOONAHIN SH 51-13	WIDEMOUTH SH 51-14	ZANTHUS SH 51-15	HARTMAN SH 51-16
LAKE JOHNSON SH 51-1	NORFOLK SH 51-2	BALLADONIA SH 51-3	OLIVER SH 51-4
NAVETHIN SH 51-6	ESPERANCE SH 51-4	MALCOLM SH 51-7	BALLY SH 51-8

INDEX TO 1:250 000 MAP SHEETS WITHIN FRASER RANGE REGION

COONANA 3636	ZANTHUS 3635
YANDALLA 3634	BYRON HILL 3634
FRASER RANGE 3632	HARRIS 3633

SAMPLE LOCATIONS

REGOLITH GEOCHEMISTRY SERIES

FRASER RANGE REGION

FIRST EDITION 2000
© Western Australia 2000

WARNING: Inks are water soluble and will
fade with prolonged exposure to light