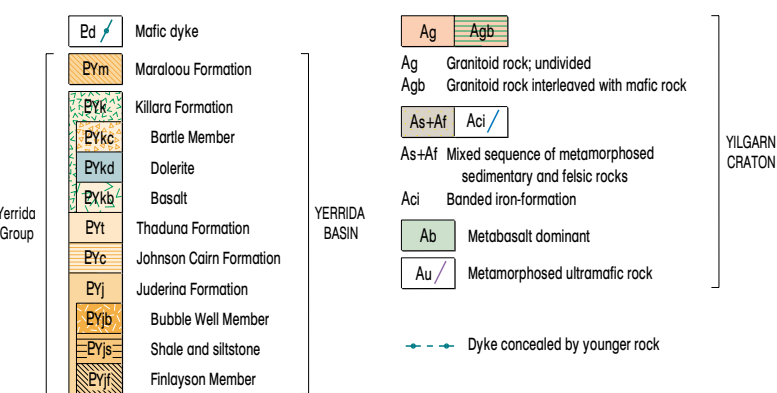
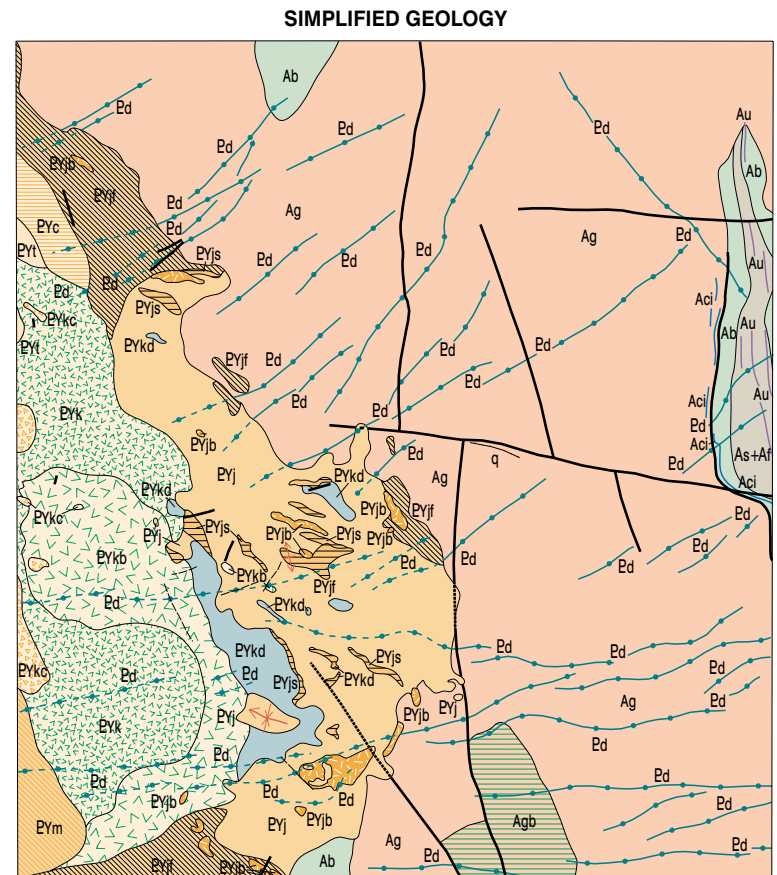
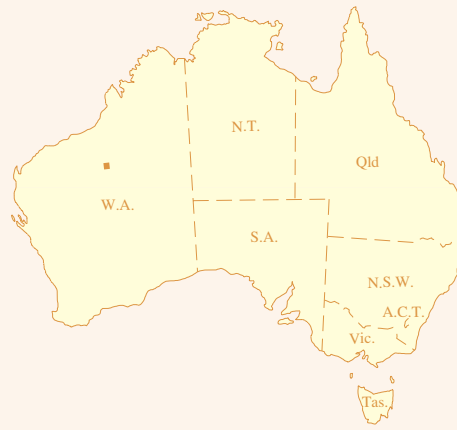
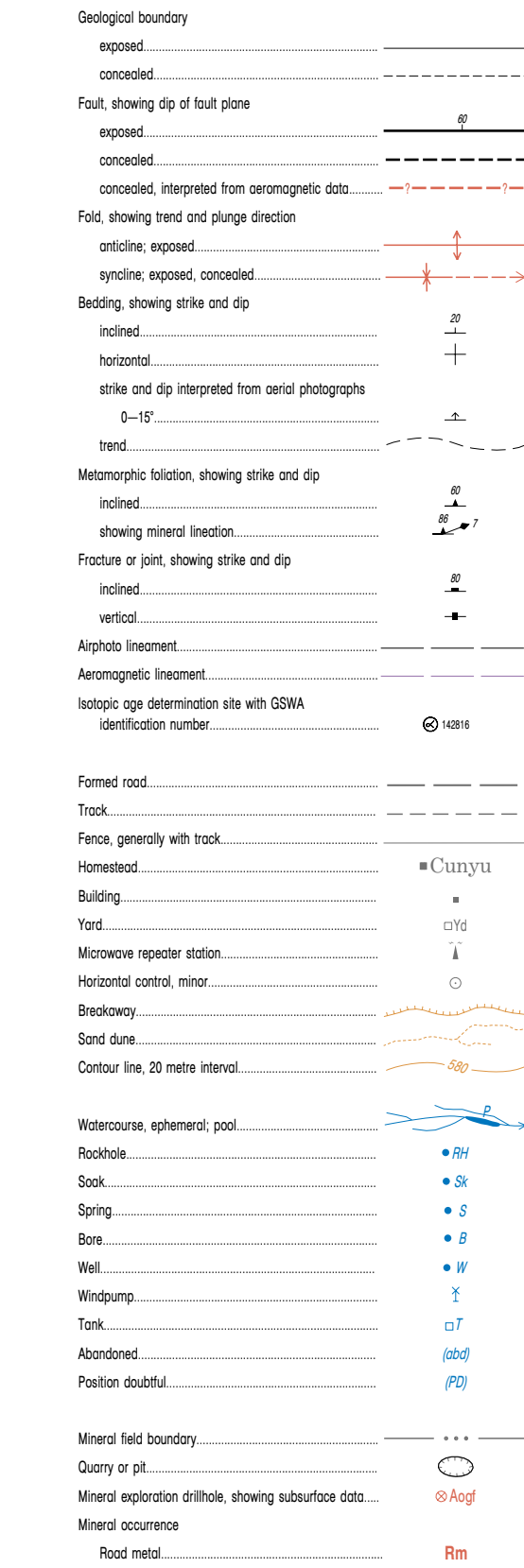
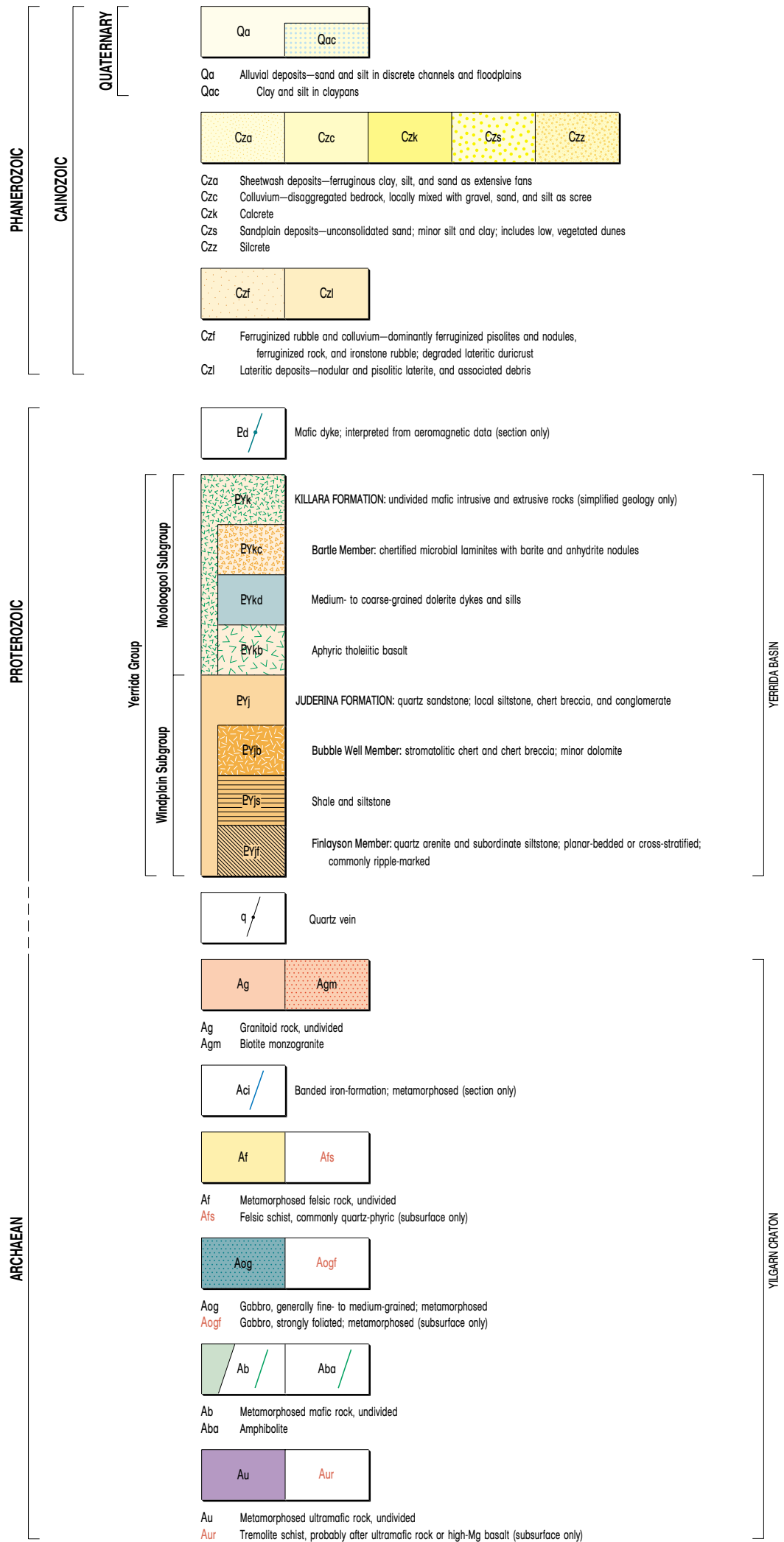
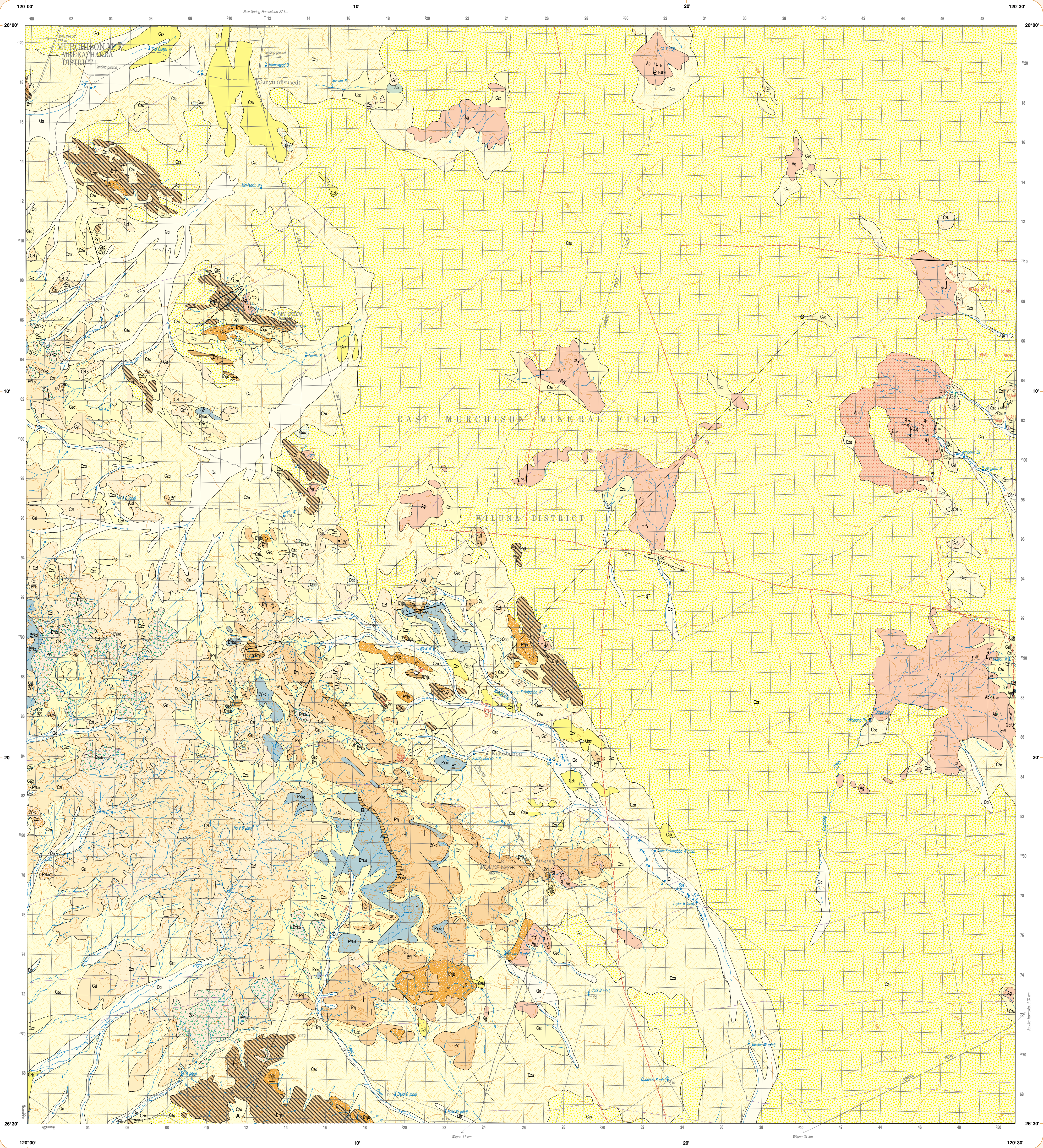


CUNYU

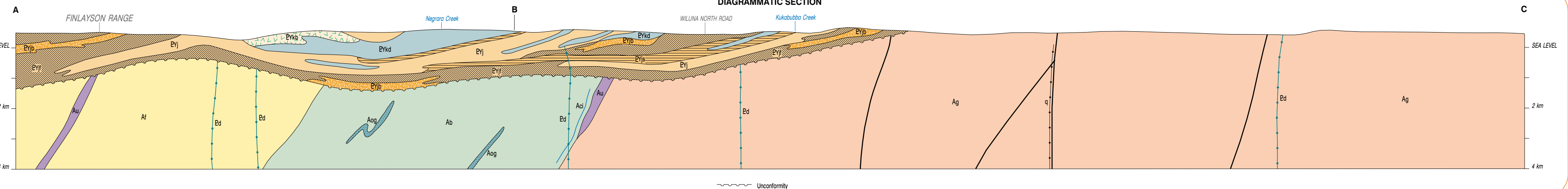
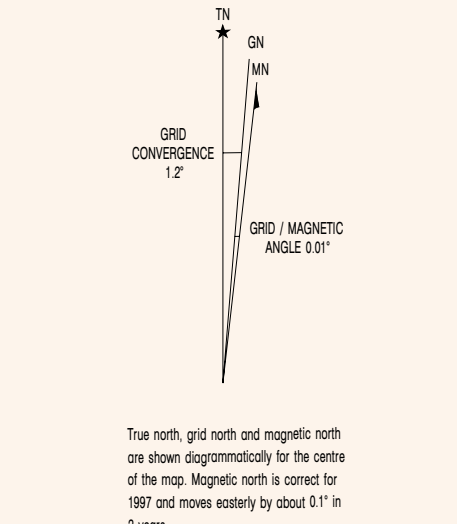
AUSTRALIA 1:100 000 GEOLOGICAL SERIES

GEOLOGICAL SURVEY OF WESTERN AUSTRALIA

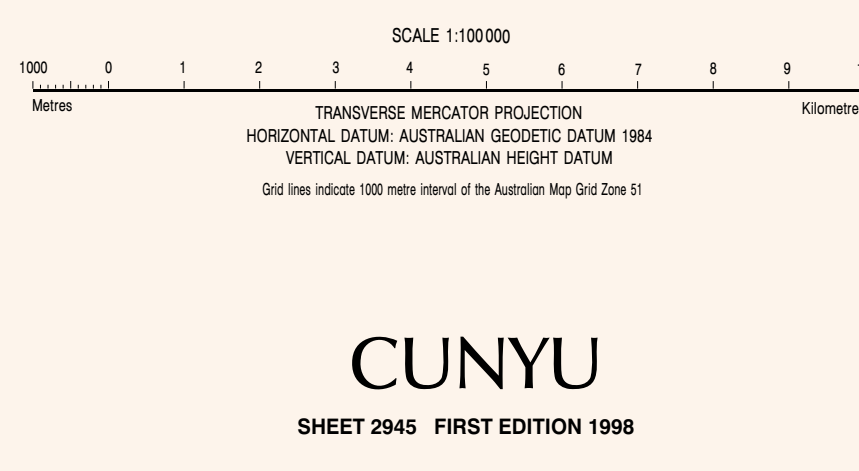
SHEET 2945



SHEET INDEX									
JAMES	WILLIAMS	WILLIAMS	WILLIAMS	WILLIAMS	WILLIAMS	WILLIAMS	WILLIAMS	WILLIAMS	WILLIAMS
2945	2946	2947	2948	2949	2950	2951	2952	2953	2954
2955	2956	2957	2958	2959	2960	2961	2962	2963	2964
2965	2966	2967	2968	2969	2970	2971	2972	2973	2974
2975	2976	2977	2978	2979	2980	2981	2982	2983	2984
2985	2986	2987	2988	2989	2990	2991	2992	2993	2994
2995	2996	2997	2998	2999	3000	3001	3002	3003	3004



Geology by N. G. Adamides, T. R. Farrell, and F. Priopio 1996  
Edited by D. Ferdinando and G. Loun  
Cartography by P. Taylor, K. Greenberg and M. Ward  
Topography from the Department of Land Administration Sheet 95 51 8 2945,  
with modifications from geological field survey  
Published by the Geological Survey of Western Australia. Copies available from the  
Mining Information Centre, Department of Minerals and Energy, 100 Plain Street,  
East Perth, WA, 6004. Phone 08 9222 3460, Fax 08 9222 3464.  
This map is also available in digital form.  
Printed by the Sands Print Group, Western Australia.  
The recommended reference for this map is: ADAMIDES, N. G., FARRELL, T. R., and PRIPIO, F., 1996.  
Cunyu, W.A. Sheet 2945. Western Australia Geological Survey, 1:100 000 Geological Series.



CUNYU  
SHEET 2945 FIRST EDITION 1996  
© Western Australia 1996