

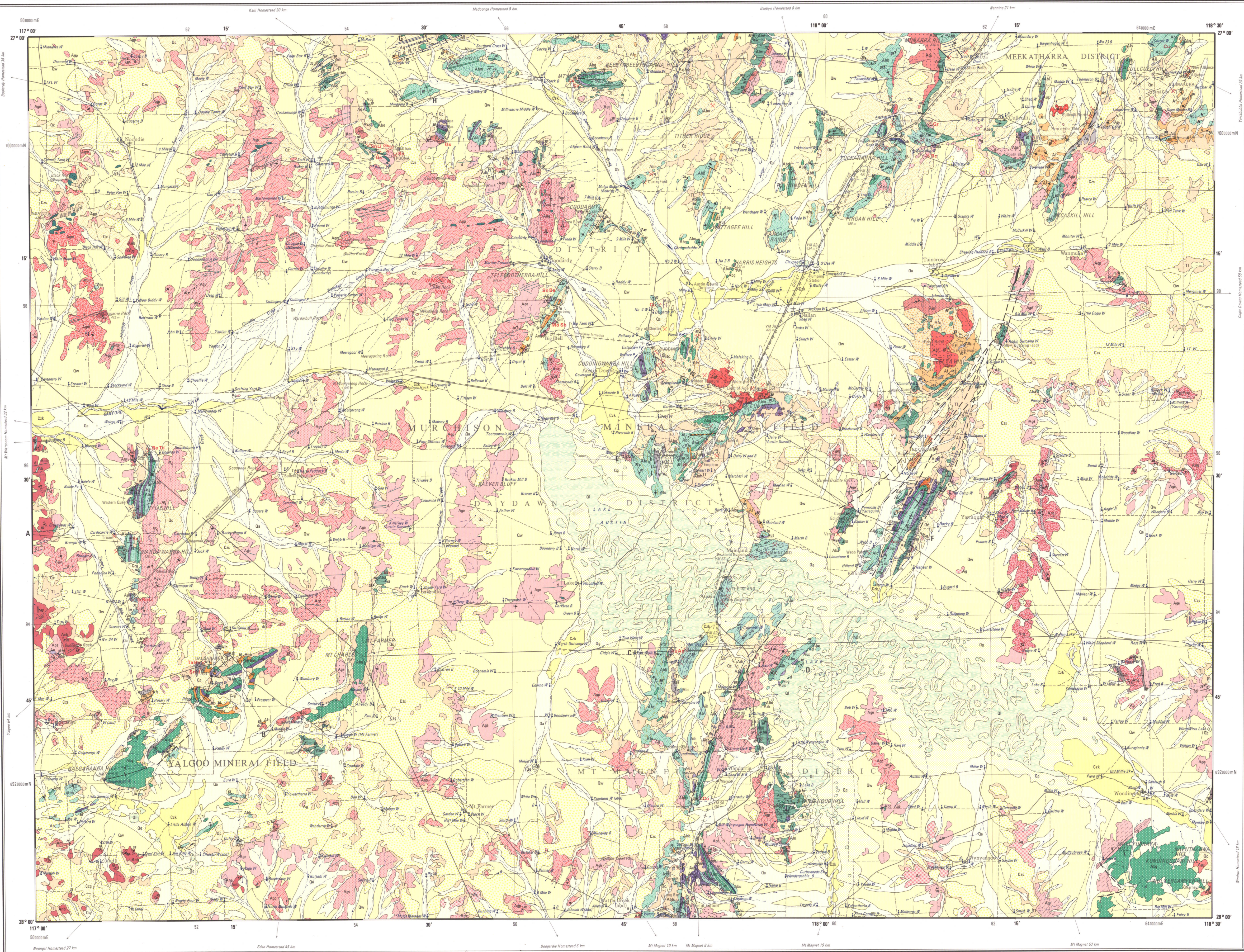
SYMBOLS

- Geological boundary
accurate
approximate, may be gradual
- Fault
accurate
concealed or inferred
- Folds
syncline showing plunge
overturned syncline showing plunge
plunge of minor fold
locality of outcrop folds
- Bedding
inclined
vertical
- Very low indication
general
differentiation in mafic silt
graded bedding
pillow flow
- Foliation in metamorphic rocks
inclined
vertical
- Line fracture cleavage
vertical
inclined
vertical
- Igneous banding in granitoids - mineral fabric,
mafic schlieren or relictic banding
inclined
vertical
- Grain banding
inclined
vertical
- Lamination
general
mineral elongation
bedding - foliation/cleavage intersection
concretion/foliation/cleavage intersection
- Air photo lineaments
Foliation in recrystallized granite
weak to moderate
moderate to strong
Granitoid charged with small mafic xenoliths and/or clots
Post-tectonic granitoids, igneous texture usually preserved
- Mineral field boundary
Mineral field district boundary
Highway with national route marker
Formed road
Track
Abandoned railway
Township, gazetted (up to less than 1000)
Homestead
Building
Locality
Airstrip, landing ground
Horizontal control, major, minor
Vertical control, height accurate
Sand dune
- Hydrogeological intermittent
Pool
Bore
Well
Windmill
Sole
Rockhole
Abandoned
- Mining centre
Mine, may or may not be working
(gold unless otherwise indicated)
Alluvial workings
Quarry
Mineral occurrence
Aggregate other than crushed rock
Antimony
Beryllium
Chrysotile (asbestos)
Copper
Crushed rock aggregate
Gems
Gold
Lithium
Molybdenum
Silver
Tantalum
Tin
Wulfenium (tungsten)
- FOONIA
X Agn Khan
- Cue
Nouadine
Marrat
Y.M.
CUE



INDEX TO ADJOINING SHEETS			
WARRICK 30 10 15 30 10 15	WARRICK 30 10 15 30 10 15	WARRICK 30 10 15 30 10 15	WARRICK 30 10 15 30 10 15
WARRICK 30 10 15 30 10 15	WARRICK 30 10 15 30 10 15	WARRICK 30 10 15 30 10 15	WARRICK 30 10 15 30 10 15
WARRICK 30 10 15 30 10 15	WARRICK 30 10 15 30 10 15	WARRICK 30 10 15 30 10 15	WARRICK 30 10 15 30 10 15
WARRICK 30 10 15 30 10 15	WARRICK 30 10 15 30 10 15	WARRICK 30 10 15 30 10 15	WARRICK 30 10 15 30 10 15

The line between magnetic declinations, 1880
+ means declination is east and correction must be
added to compass bearing to give true bearing
- means declination is west and correction must be
subtracted from compass bearing to give true bearing
Annual change is - 1 second



REFERENCE

Qr	Qd	Qa	Qs	Qb
Qr	Qd	Qa	Qs	Qb
Qr	Qd	Qa	Qs	Qb
Qr	Qd	Qa	Qs	Qb
Qr	Qd	Qa	Qs	Qb

QUATERNARY

CAMBODIC

TERTIARY

Crt	Cq	Ck
Crt	Cq	Ck
Crt	Cq	Ck
Crt	Cq	Ck
Crt	Cq	Ck

Tt	Ts
Tt	Ts
Tt	Ts
Tt	Ts
Tt	Ts

d	d	d	d	d
d	d	d	d	d
d	d	d	d	d
d	d	d	d	d
d	d	d	d	d

Ag	Ag	Ag	Ag	Ag
Ag	Ag	Ag	Ag	Ag
Ag	Ag	Ag	Ag	Ag
Ag	Ag	Ag	Ag	Ag
Ag	Ag	Ag	Ag	Ag

Ag	Ag	Ag	Ag	Ag
Ag	Ag	Ag	Ag	Ag
Ag	Ag	Ag	Ag	Ag
Ag	Ag	Ag	Ag	Ag
Ag	Ag	Ag	Ag	Ag

Ag	Ag	Ag	Ag	Ag
Ag	Ag	Ag	Ag	Ag
Ag	Ag	Ag	Ag	Ag
Ag	Ag	Ag	Ag	Ag
Ag	Ag	Ag	Ag	Ag

Ag	Ag	Ag	Ag	Ag
Ag	Ag	Ag	Ag	Ag
Ag	Ag	Ag	Ag	Ag
Ag	Ag	Ag	Ag	Ag
Ag	Ag	Ag	Ag	Ag

Ag	Ag	Ag	Ag	Ag
Ag	Ag	Ag	Ag	Ag
Ag	Ag	Ag	Ag	Ag
Ag	Ag	Ag	Ag	Ag
Ag	Ag	Ag	Ag	Ag

Ag	Ag	Ag	Ag	Ag
Ag	Ag	Ag	Ag	Ag
Ag	Ag	Ag	Ag	Ag
Ag	Ag	Ag	Ag	Ag
Ag	Ag	Ag	Ag	Ag

Ag	Ag	Ag	Ag	Ag
Ag	Ag	Ag	Ag	Ag
Ag	Ag	Ag	Ag	Ag
Ag	Ag	Ag	Ag	Ag
Ag	Ag	Ag	Ag	Ag

Ag	Ag	Ag	Ag	Ag
Ag	Ag	Ag	Ag	Ag
Ag	Ag	Ag	Ag	Ag
Ag	Ag	Ag	Ag	Ag
Ag	Ag	Ag	Ag	Ag

Ag	Ag	Ag	Ag	Ag
Ag	Ag	Ag	Ag	Ag
Ag	Ag	Ag	Ag	Ag
Ag	Ag	Ag	Ag	Ag
Ag	Ag	Ag	Ag	Ag

Ag	Ag	Ag	Ag	Ag
Ag	Ag	Ag	Ag	Ag
Ag	Ag	Ag	Ag	Ag
Ag	Ag	Ag	Ag	Ag
Ag	Ag	Ag	Ag	Ag

Ag	Ag	Ag	Ag	Ag
Ag	Ag	Ag	Ag	Ag
Ag	Ag	Ag	Ag	Ag
Ag	Ag	Ag	Ag	Ag
Ag	Ag	Ag	Ag	Ag

Ag	Ag	Ag	Ag	Ag
Ag	Ag	Ag	Ag	Ag
Ag	Ag	Ag	Ag	Ag
Ag	Ag	Ag	Ag	Ag
Ag	Ag	Ag	Ag	Ag

Ag	Ag	Ag	Ag	Ag
Ag	Ag	Ag	Ag	Ag
Ag	Ag	Ag	Ag	Ag
Ag	Ag	Ag	Ag	Ag
Ag	Ag	Ag	Ag	Ag

Ag	Ag	Ag	Ag	Ag
Ag	Ag	Ag	Ag	Ag
Ag	Ag	Ag	Ag	Ag
Ag	Ag	Ag	Ag	Ag
Ag	Ag	Ag	Ag	Ag

Ag	Ag	Ag	Ag	Ag
Ag	Ag	Ag	Ag	Ag
Ag	Ag	Ag	Ag	Ag
Ag	Ag	Ag	Ag	Ag
Ag	Ag	Ag	Ag	Ag

Ag	Ag	Ag	Ag	Ag
Ag	Ag	Ag	Ag	Ag
Ag	Ag	Ag	Ag	Ag
Ag	Ag	Ag	Ag	Ag
Ag	Ag	Ag	Ag	Ag

Ag	Ag	Ag	Ag	Ag
Ag	Ag	Ag	Ag	Ag
Ag	Ag	Ag	Ag	Ag
Ag	Ag	Ag	Ag	Ag
Ag	Ag	Ag	Ag	Ag

Ag	Ag	Ag	Ag	Ag
Ag	Ag	Ag	Ag	Ag
Ag	Ag	Ag	Ag	Ag
Ag	Ag	Ag	Ag	Ag
Ag	Ag	Ag	Ag	Ag

Ag	Ag	Ag	Ag	Ag
Ag	Ag	Ag	Ag	Ag
Ag	Ag	Ag	Ag	Ag
Ag	Ag	Ag	Ag	Ag
Ag	Ag	Ag	Ag	Ag

Ag	Ag	Ag	Ag	Ag
Ag	Ag	Ag	Ag	Ag
Ag	Ag	Ag	Ag	Ag
Ag	Ag	Ag	Ag	Ag
Ag	Ag	Ag	Ag	Ag

Ag	Ag	Ag	Ag	Ag
Ag	Ag	Ag	Ag	Ag
Ag	Ag	Ag	Ag	Ag
Ag	Ag	Ag	Ag	Ag
Ag	Ag	Ag	Ag	Ag

Ag	Ag	Ag	Ag	Ag
Ag	Ag	Ag	Ag	Ag
Ag	Ag	Ag	Ag	Ag
Ag	Ag	Ag	Ag	Ag
Ag	Ag	Ag	Ag	Ag

Ag	Ag	Ag	Ag	Ag
Ag	Ag	Ag	Ag	Ag
Ag	Ag	Ag	Ag	Ag
Ag	Ag	Ag	Ag	Ag
Ag	Ag	Ag	Ag	Ag

Ag	Ag	Ag	Ag	Ag
Ag	Ag	Ag	Ag	Ag
Ag	Ag	Ag	Ag	Ag
Ag	Ag	Ag	Ag	Ag
Ag	Ag	Ag	Ag	Ag

Ag	Ag	Ag	Ag	Ag
Ag	Ag	Ag	Ag	Ag
Ag	Ag	Ag	Ag	Ag
Ag	Ag	Ag	Ag	Ag
Ag	Ag	Ag	Ag	Ag

Ag	Ag	Ag	Ag	Ag
Ag	Ag	Ag	Ag	Ag
Ag	Ag	Ag	Ag	Ag
Ag	Ag	Ag	Ag	Ag
Ag	Ag	Ag	Ag	Ag

Ag	Ag	Ag	Ag	Ag
Ag	Ag	Ag	Ag	Ag
Ag	Ag	Ag	Ag	Ag
Ag	Ag	Ag	Ag	Ag
Ag	Ag	Ag	Ag	Ag

Ag	Ag	Ag	Ag	Ag
Ag	Ag	Ag	Ag	Ag
Ag	Ag	Ag	Ag	Ag
Ag	Ag	Ag	Ag	Ag
Ag	Ag	Ag	Ag	Ag

Ag	Ag	Ag	Ag	Ag
Ag	Ag	Ag	Ag	Ag
Ag	Ag	Ag	Ag	Ag
Ag	Ag	Ag	Ag	Ag
Ag	Ag	Ag	Ag	Ag

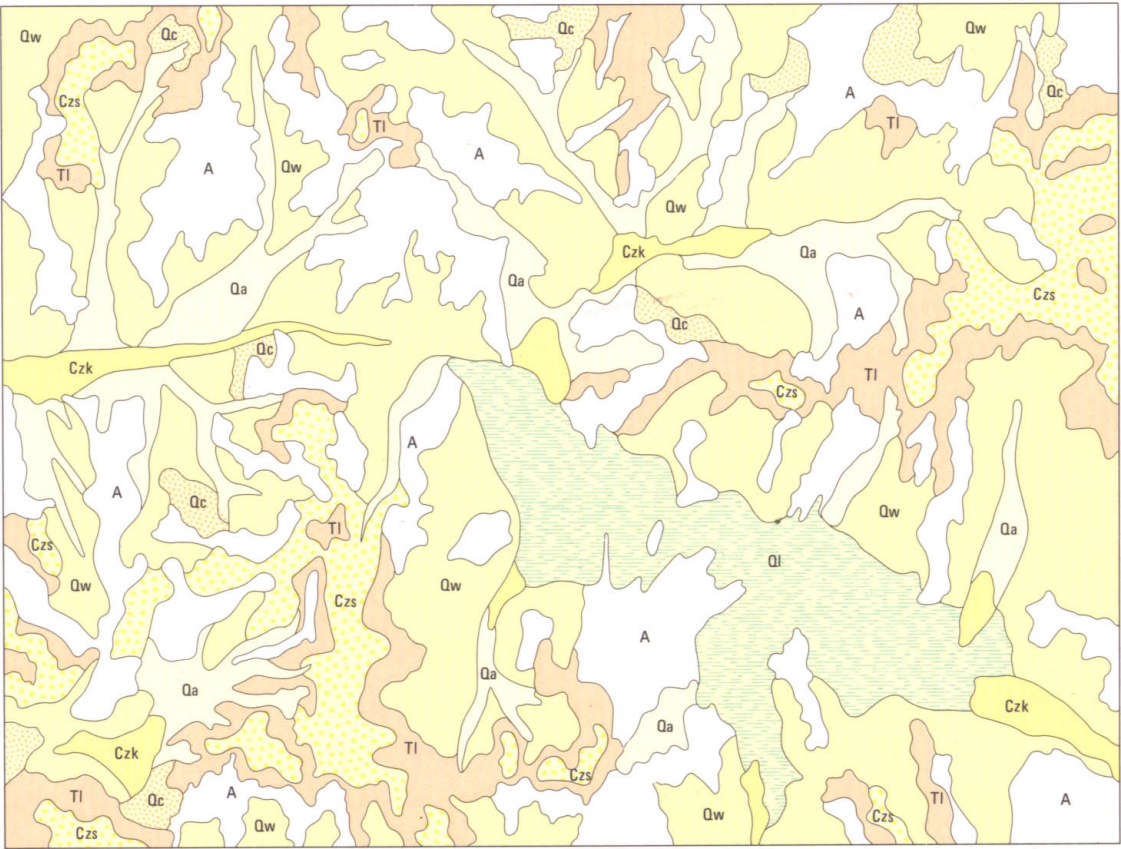
Ag	Ag	Ag	Ag	Ag
Ag	Ag	Ag	Ag	Ag
Ag	Ag	Ag	Ag	Ag
Ag	Ag	Ag	Ag	Ag
Ag	Ag	Ag	Ag	Ag

Ag	Ag	Ag	Ag	Ag
Ag	Ag	Ag	Ag	Ag
Ag	Ag	Ag	Ag	Ag
Ag	Ag	Ag	Ag	Ag
Ag	Ag	Ag	Ag	Ag

Ag	Ag	Ag	Ag	Ag
Ag	Ag	Ag	Ag	Ag
Ag	Ag	Ag	Ag	Ag
Ag	Ag	Ag	Ag	Ag
Ag	Ag	Ag	Ag	Ag

Ag	Ag	Ag	Ag	Ag
Ag	Ag	Ag	Ag	Ag
Ag	Ag	Ag	Ag	Ag
Ag	Ag	Ag	Ag	Ag
Ag	Ag	Ag	Ag	Ag

CAINOZOIC GEOLOGY



Scale 1 : 1000 000
0 10 20 30 40 50
KILOMETRES



A. F. TRENDAILL
DIRECTOR, GEOLOGICAL SURVEY DIVISION

SCALE 1 : 250 000

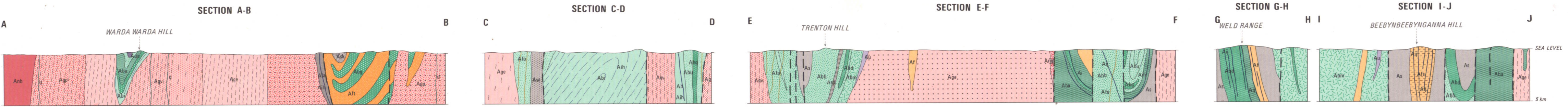
0 5 10 15 20 25 30
Kilometres

TRANSVERSE MERCATOR PROJECTION

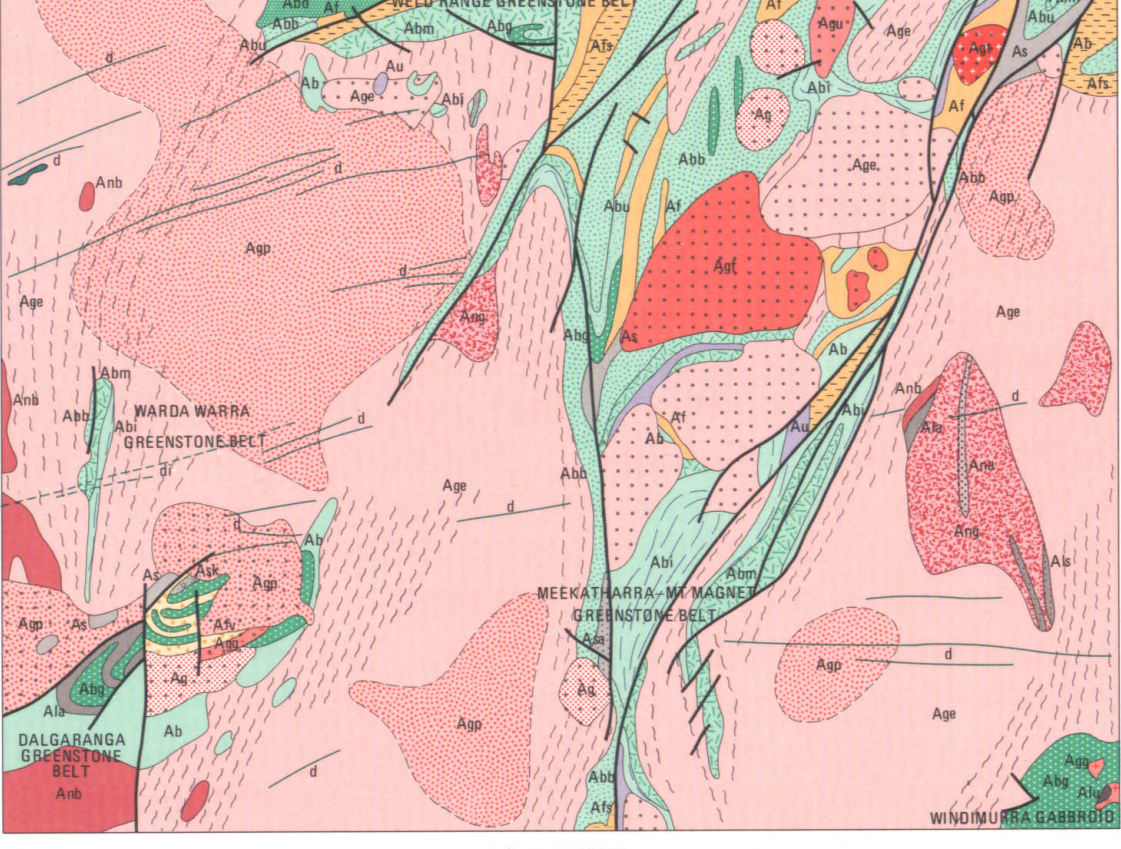
ZONE 50 AUSTRALIAN MAP GRID

DIAGRAMMATIC SECTIONS

NATURAL SCALE



PRECAMBRIAN GEOLOGY



Scale 1 : 1000 000
0 10 20 30 40 50
KILOMETRES



HON. DAVID PARKER, M.L.A.
MINISTER FOR MINERALS AND ENERGY

Compiled and published by the Geological Survey of Western Australia. Cartography by the Geological Mapping Section, Department of Mines. Topographic base from compilation by the National Mapping, Canberra, A.C.T.
Copies of this map may be obtained from the Geological Survey of Western Australia, 65 Adelaide Terrace, Perth.

CUE

SHEET SG 50-15

SECOND EDITION 1986

© Western Australia 1986

