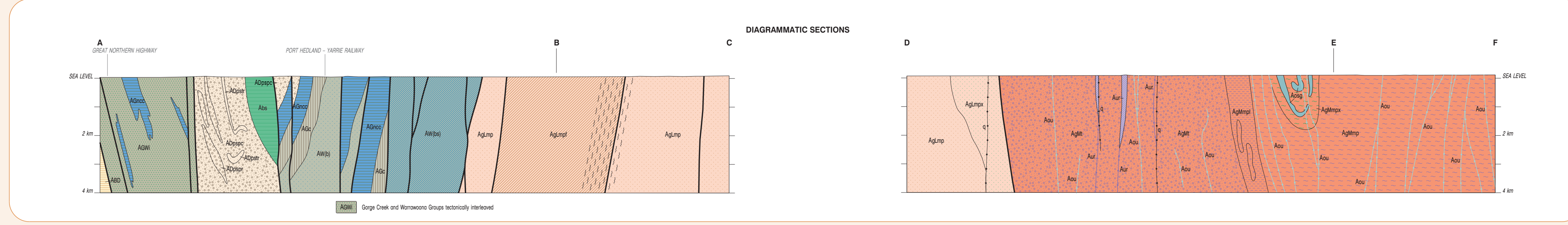
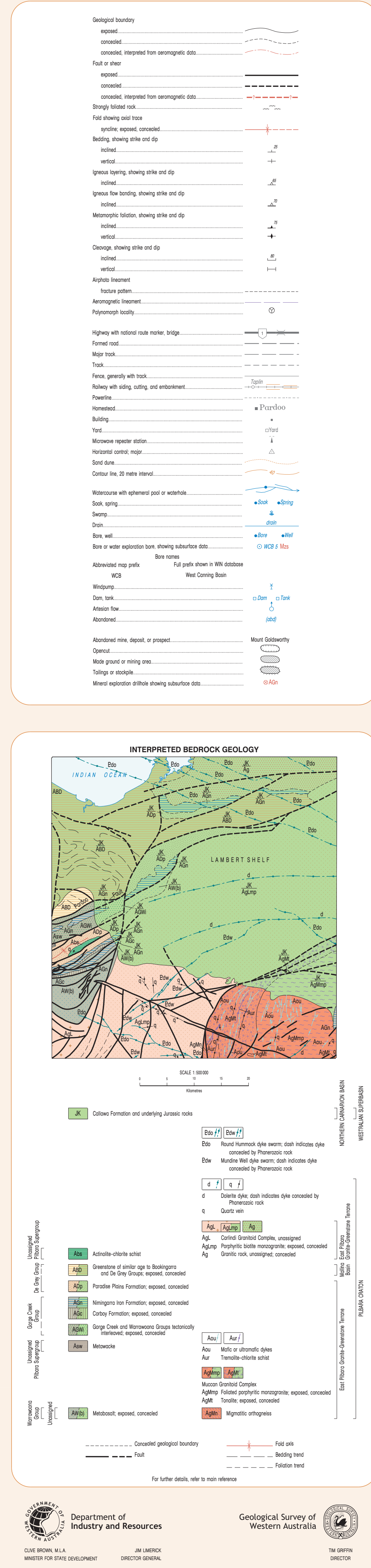
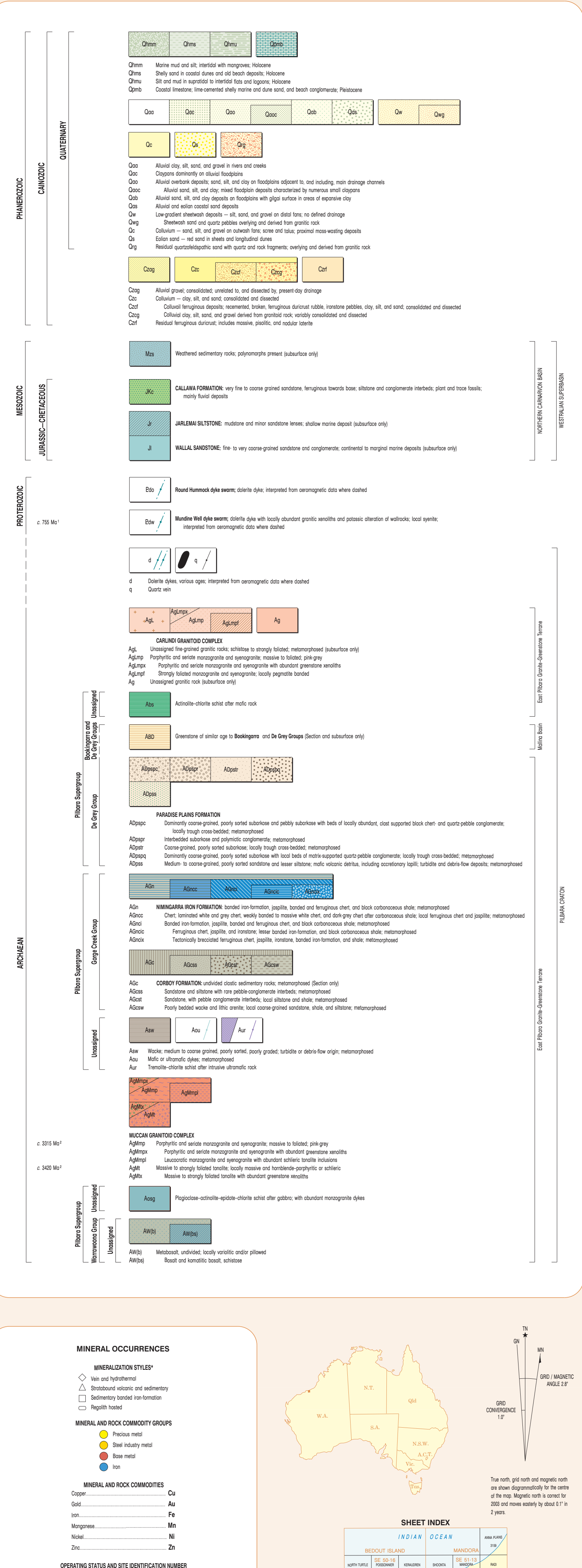
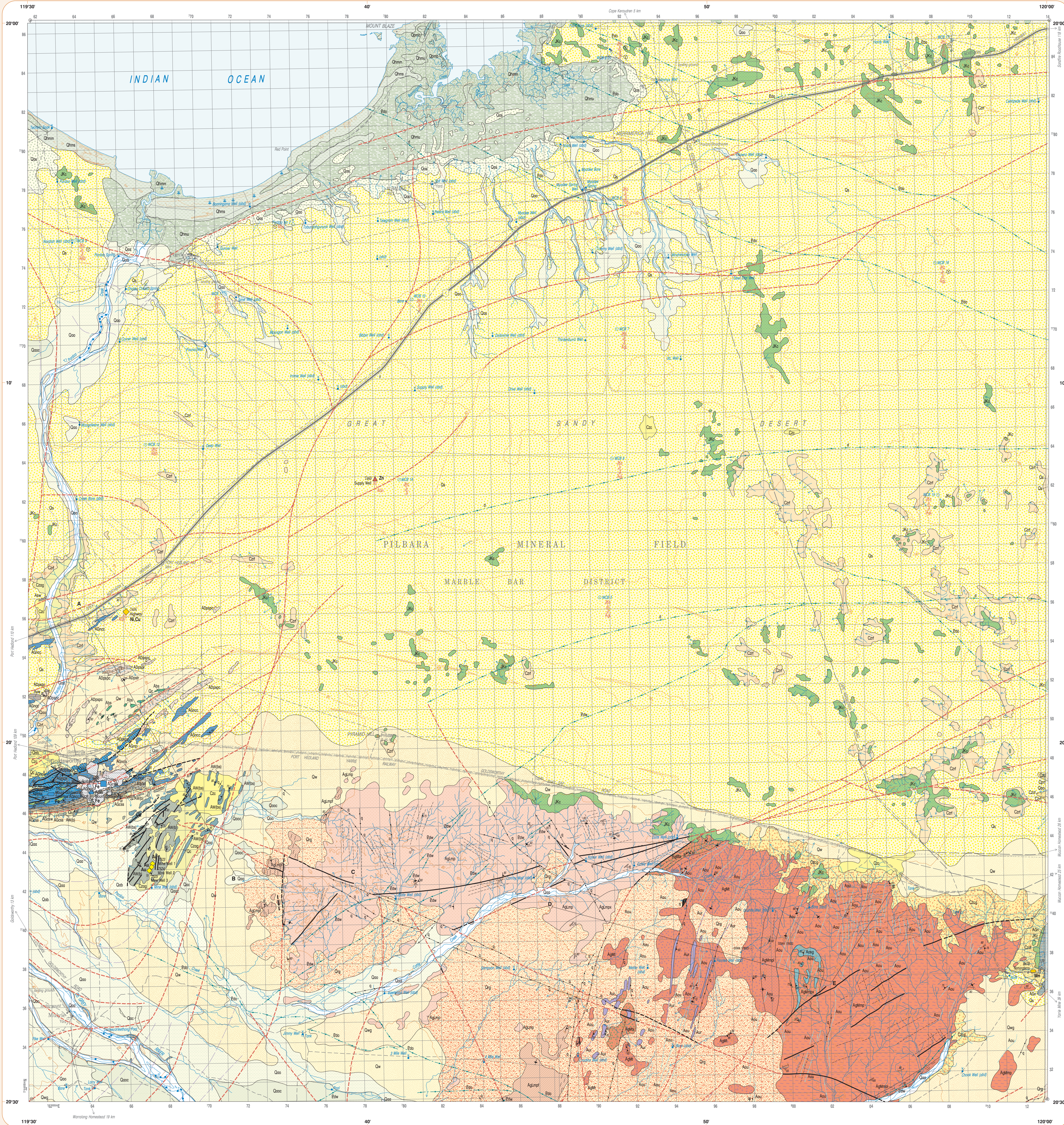


PARDOO

GEOLOGICAL SURVEY OF WESTERN AUSTRALIA

SHEET 2857

AUSTRALIA 1:100 000 GEOLOGICAL SERIES



Geology by R. H. Smithies 2001 and M. J. Van Kranendonk 2003
 Geology by:
 R. H. Smithies and M. J. Van Kranendonk, 2001, Precambrian Research, v. 100, p. 355-367.
 R. H. Smithies, in press, GSA Record.
 Edited by: C. Strong, G. Hall, A. Hughes, C. Lane, and C. Dyer.
 Cartography by: S. Colquhoun and K. Giesbrecht.
 Published by the Department of Land Administration Sheet 57 (S.A. 2857) with modifications from geological field survey.
 Published by the Geological Survey of Western Australia, Digital and field copies of this map are available from the Information Centre, Department of Industry and Resources, 100 Plain Street, East Perth, WA, 6004. Phone 08 9222 3400, Fax 08 9222 3444. Web: www.dpir.wa.gov.au. Email: geological@wagov.wa.gov.au.
 The recommended reference for this map is:
 SMITHIES, R. H., and VAN KRANENDONK, M. J., 2004, Pardoo, W.A. Sheet 2857 (Version 2.0). Western Australia Geological Survey, 1:100 000 Geological Series.

Theme	Date Source	Date Currency	Agency
Geology	GSWA	2001	Dept of Industry and Resources
Structural data	MINDEX	NOV 2001	Dept of Industry and Resources
Mineral occurrences (non-confidential)	MINDEX	MAR 2002	Dept of Industry and Resources
Geology	MINDEX	MAR 2002	Dept of Industry and Resources
Geological control	GEOSPAR	JUN 2001	Dept of Land Information
Topographic information	GEOSPAR	JUN 2001	Dept of Land Information
Topography	DLI and GSWA field survey	2001	Dept of Land Information
Water bodies	Water Information system (WIS)	AUG 2003	Dept of Environmental Protection

