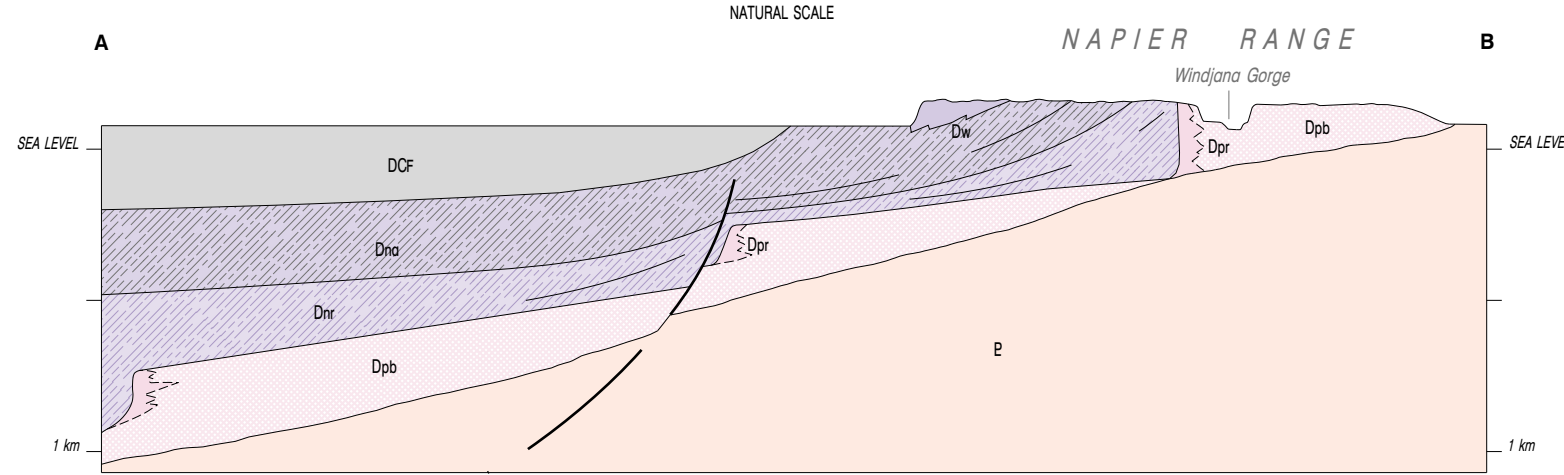


True north, grid north, and magnetic north are shown diagrammatically for the centre of the map. Magnetic north is correct for 1998 and moves easterly by about 0.1° in 9 years.

DIAGRAMMATIC SECTION



Compiled by P. E. Playford and R. M. Hocking

Geology by P. E. Playford 1971–1995, R. M. Hocking 1993–1995, and A. E. Cockbain 1971

Edited by N. Tetlow, D. Ferdinando, F. Apidopoulos, and C. Brien

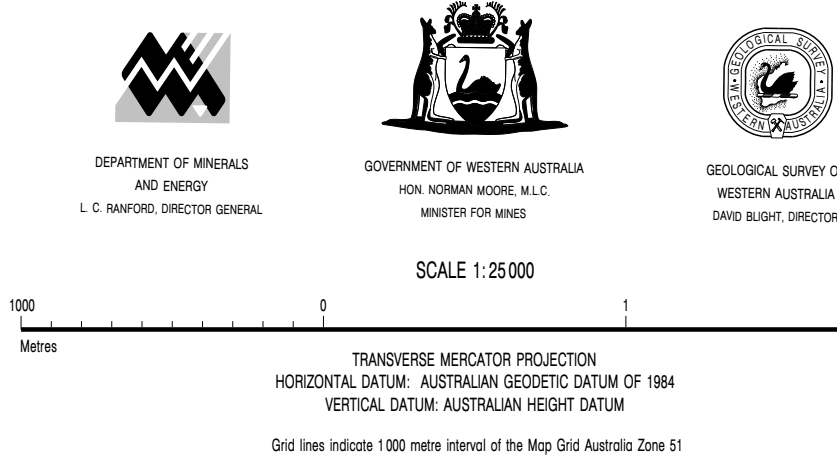
Cartography by E. Green, S. Coldcutt, T. Edwards, and B. Williams

Topography from the Department of Land Administration with modifications from geological field survey

Published by the Geological Survey of Western Australia. Copies available from the Information Centre, Department of Minerals and Energy, 100 Plain Street, East Perth, WA, 6004. Phone (08) 9222 3459, Fax (08) 9222 3444

This map is also available in digital form

Printed by the Sands Print Group, Western Australia



# WINDJANA GORGE

## DEVONIAN REEF COMPLEXES OF THE CANNING BASIN

BULLETIN 145 PLATE 6

© Western Australia 1998