

COMPANY PROJECTS WITH SURFACE  
GEOCHEMISTRY DATA IN OPEN FILE  
REPORTS (at February 1995)

PROJECTS REPORTED BETWEEN 1966 AND 1985

**Period Project Reported Within**  
(Various colour shades used for ease of project indentification)

|  |             |
|--|-------------|
|  | 1966 - 1970 |
|  | 1971 - 1975 |
|  | 1976 - 1980 |
|  | 1981 - 1985 |
|  | 1986 - 1990 |
|  | 1991 - 1994 |

See PLATE 2

Principal road

Minor road

Track

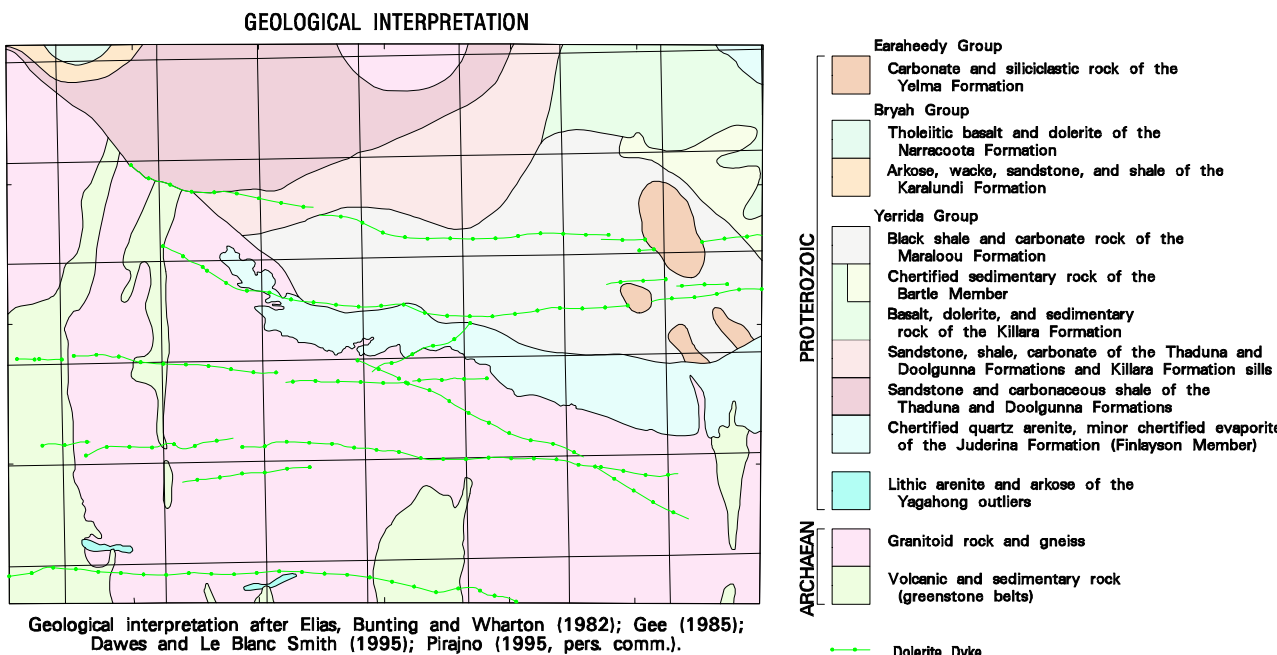
Watercourse and lake boundaries

Yandli Homestead

Grawooda Locality

Gabanintha Significant mine

Number within project area is a database ID number (See Appendix 3)



SHEET INDEX

|                           |                       |                        |
|---------------------------|-----------------------|------------------------|
| ROBINSON RANGE<br>SG 50-7 | PEAK HILL<br>SG 50-8  | NABERU<br>SG 51-5      |
| SELELE<br>SG 50-11        | GLENGARRY<br>SG 50-12 | WILUNA<br>SG 51-9      |
| CUE<br>SG 50-15           | SANDSTONE<br>SG 50-16 | SIR SAMUEL<br>SG 51-13 |

INDEX TO 1:100 000 MAP SHEETS  
WITHIN GLENGARRY 1:250 000

|                    |                     |                    |
|--------------------|---------------------|--------------------|
| GLENGARRY<br>2845  | MOOLOOGPOOL<br>2745 | MT BARTLE<br>2845  |
| GABINANHTA<br>2844 | YANGANOO<br>2744    | MEREWETHER<br>2844 |

COMPANY PROJECTS WITH SURFACE  
GEOCHEMISTRY DATA IN OPEN FILE  
REPORTS (at February 1995)

PROJECTS REPORTED BETWEEN 1966 AND 1985

REGOLITH GEOCHEMISTRY SERIES

GLENGARRY

SHEET SG 50-12

FIRST EDITION 1996  
© Western Australia

Edited by C. Strong and G. Loan

Cartography by G. Jose, K. Smith and S. Collopy

Topography from Australian Surveying and Land Information Group Sheet SG 50-12 and roads modified from geological field survey (1994)

This map was compiled digitally from the geochemical database held by Geological Survey Western Australia and stored in the ORACLE database management system; compiled and produced using a Geographic Information System, Arc/info

This map is also available in digital form

Copies of this map, or extracts from the database, are available from the Department of Minerals and Energy, 100 Plain Street, East Perth, W.A., 6004



DEPARTMENT OF MINERALS AND ENERGY  
HON. GEORGE CASH J.P., M.L.C.  
MINISTER FOR MINES  
K.A. PERRY, DIRECTOR GENERAL

SCALE 1:250 000



TRANSVERSE MERCATOR PROJECTION  
Grid lines indicate 20 000 metre interval of the Australian Map Grid Zone 50



PETRO GUJ  
DIRECTOR, GEOLOGICAL SURVEY  
OF WESTERN AUSTRALIA

Compiled by: J.A. Faulkner, 1995

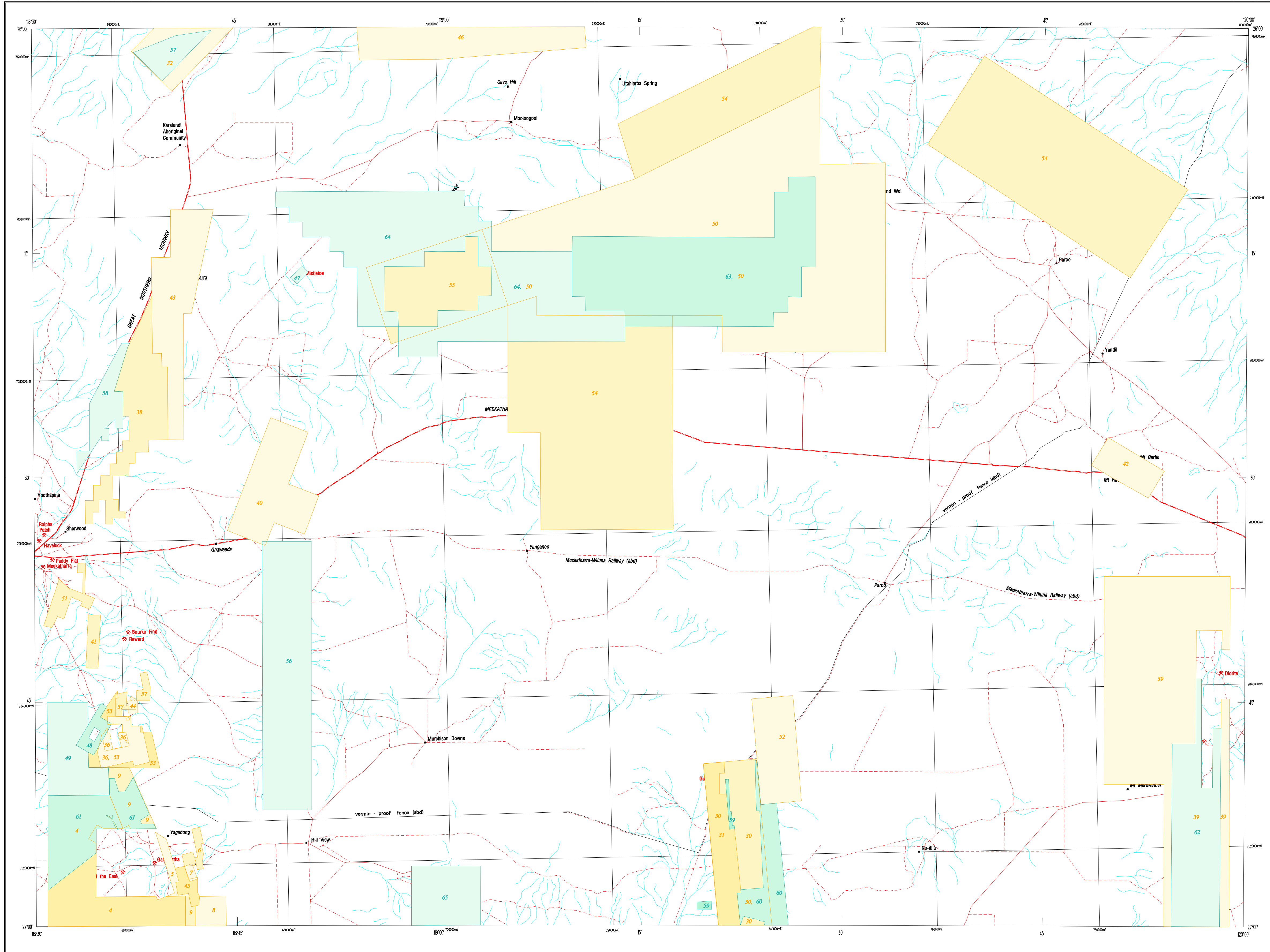
Compiled from open file company reports held by Geological Survey of Western Australia

The recommended reference for this map is: FAULKNER, J.A., 1996, Glengarry, W.A. Sheet SG 50-12 -- Company projects with surface geochemistry data in open file reports (at February 1995), projects commenced between 1966 and 1985: Western Australia Geological Survey, 1:250 000 Regolith Geochemistry Series

Some tenement boundaries have been generalized for the purpose of this map. Refer to specific project reports for precise boundary descriptions

WARNING: Inks are water soluble and will fade with prolonged exposure to light

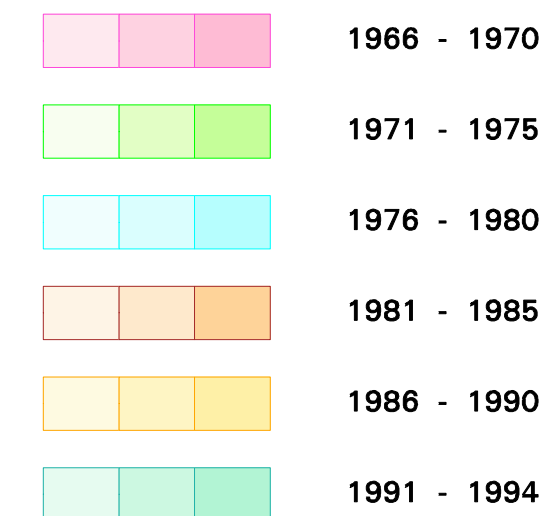




COMPANY PROJECTS WITH SURFACE  
GEOCHEMISTRY DATA IN OPEN FILE  
REPORTS (at February 1995)

### PROJECTS REPORTED BETWEEN 1986 AND 1994

**Period Project Reported Within**  
(Various colour shades used for ease of project indetification)



See PLATE 1

Number within project area is a database ID number (See Appendix 3)



Principal road

— Minor road

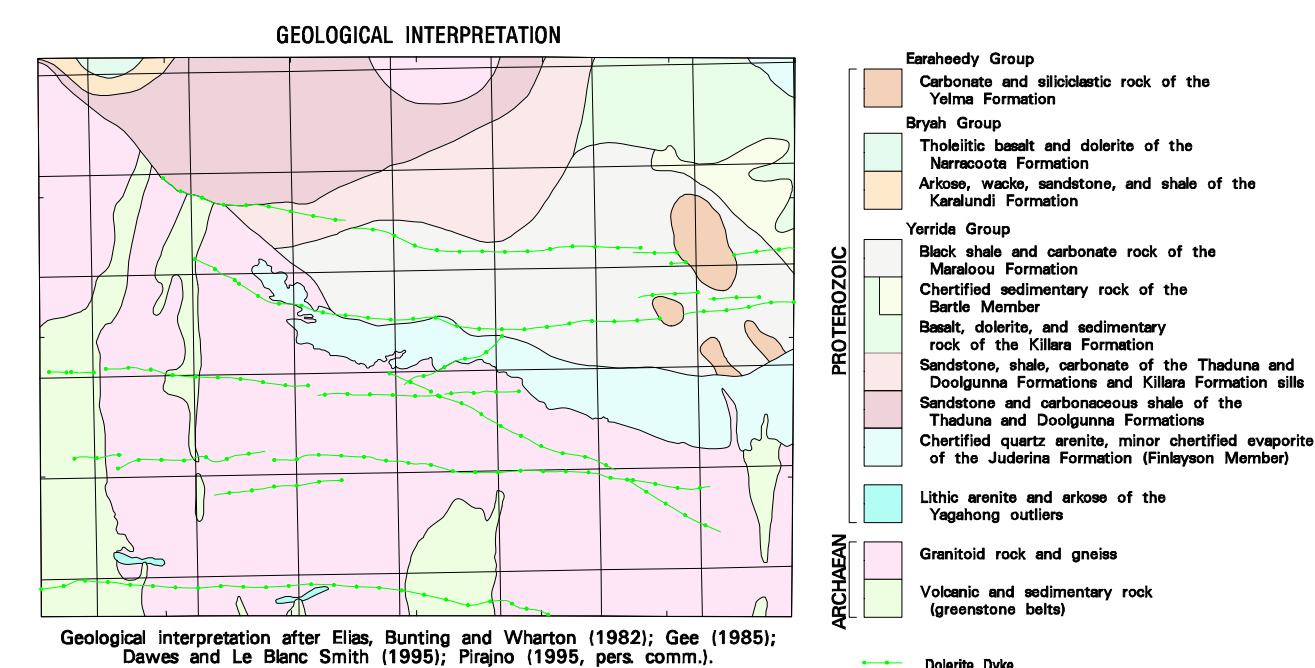
----- **Track**

Watercourse and lake boundaries

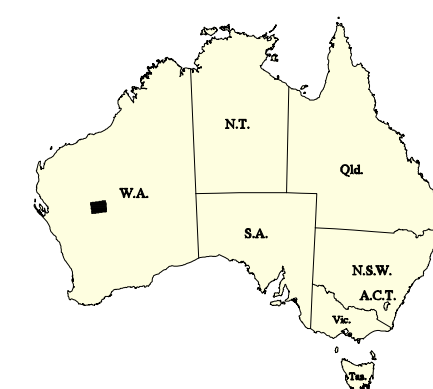
- Yandil Homestead

- *Gnaweeda*      Locality

 **Gabanintha**      **Significant mine**



| SHEET INDEX                  |                       |                        |
|------------------------------|-----------------------|------------------------|
| ROBINSON<br>RANGE<br>SG 50-7 | PEAK HILL<br>SG 50-8  | NABBERU<br>SG 51-5     |
| BELELE<br>SG 50-11           | GLENGARRY<br>SG 50-12 | WILUNA<br>SG 51-9      |
| CUE<br>SG 50-15              | SANDSTONE<br>SG 50-16 | SIR SAMUEL<br>SG 51-13 |



| INDEX TO 1:100 000 MAP SHEETS<br>WITHIN GLENGARRY 1:250 000 |                     |                    |
|---|---------------------|--------------------|
| GLENGARRY<br>2645   | MOOLOOGBOOL<br>2745 | MT BARTLE<br>2845  |
| GABINANTHA<br>2644  | YANGANOO<br>2744    | MEREWETHER<br>2844 |

COMPANY PROJECTS WITH SURFACE  
GEOCHEMISTRY DATA IN OPEN FILE  
REPORTS (at February 1995)

### PROJECTS REPORTED BETWEEN 1986 AND 1994

REGOLITH GEOCHEMISTRY SERIES

# LENGARRY

SHEET SG 50-12

FIRST EDITION 1996  
© Western Australia

Edited by C. Strong and G. Loan

Cartography by G. Jose, K. Smith and S. Collopy

Topography from Australian Surveying and Land Information Group Sheet SG 50-12  
and roads modified from geological field survey (1994)

This map was compiled digitally from the geochemical database held by Geological Survey Western Australia and stored in the ORACLE database management system; compiled and produced using a Geographic Information System, Arc/Info

This map is also available in digital form

Copies of this map, or extracts from the database, are available from the Department of Minerals and Energy, 100 Plain Street, East Perth, W.A., 6004



DEPARTMENT OF MINERALS AND ENERGY  
HON. GEORGE CASH J.P., M.L.C.  
MINISTER FOR MINES  
K.R. PERRY, DIRECTOR GENERAL

SCALE 1:250 000



### TRANSVERSE MERCATOR PROJECTION

Grid lines indicate 20 000 metre interval of the Australian Map Grid Zone 50



PIETRO GUJ  
DIRECTOR, GEOLOGICAL SURVEY  
OF WESTERN AUSTRALIA

Compiled by: J.A. Faulkner, 1995

Compiled from open file company reports held by Geological Survey of Western Australia

The recommended reference for this map is: FAULKNER, J.A., 1996, Glengarry, W.A. Sheet SG 50-12 -- Company projects with surface geochemistry data in open file reports (at February 1995), projects commenced between 1988 and 1994: Western Australia Geological Survey, 1:250 000 Regolith Geochemistry Series

Some tenement boundaries have been generalized for the purpose of this map. Refer to specific project reports for precise boundary descriptions

**WARNING:** Inks are water soluble and will fade with prolonged exposure to light