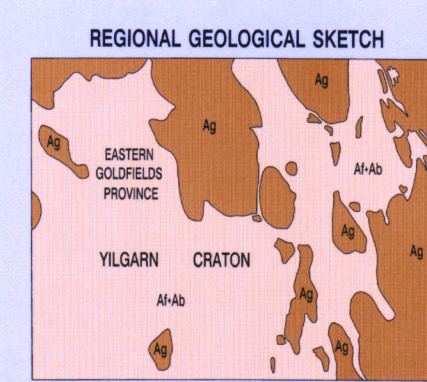
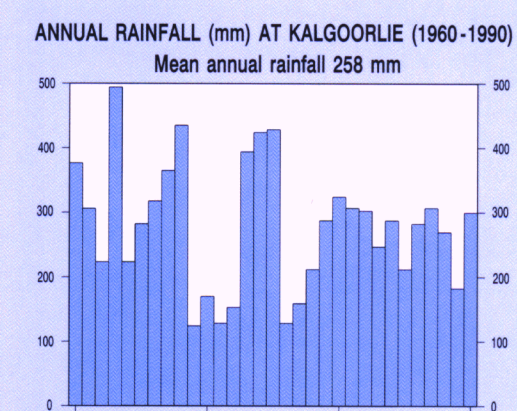
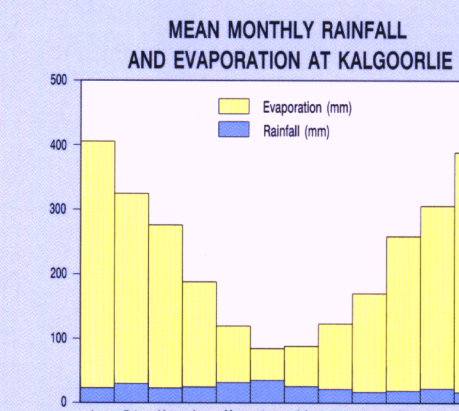
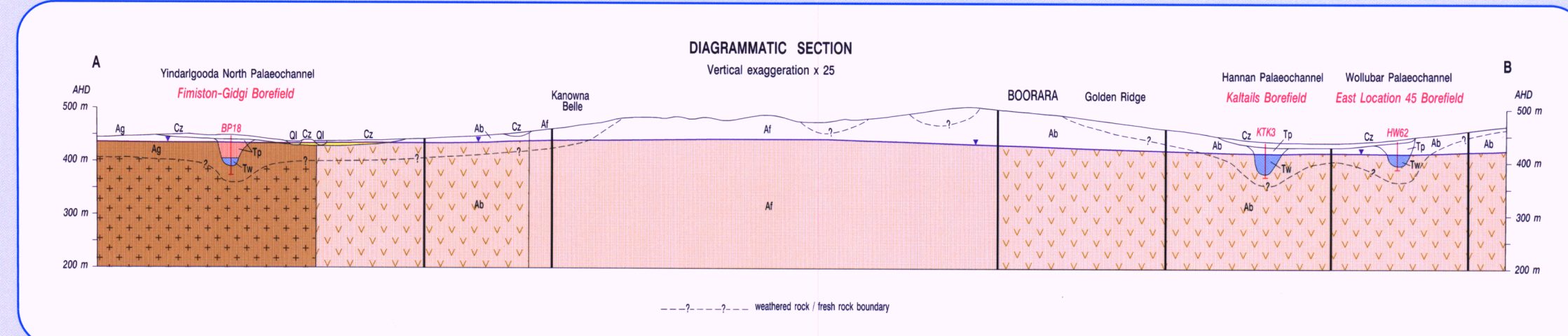


INDEX TO ADJOINING SHEETS		
WILKINS SH 51-1	GOVERNMENT SH 51-6	WILKINS SH 51-7
KALGOORLIE SH 51-9	KURNALPI SH 51-10	CUNCEBEE SH 51-11
BOOMERANG SH 51-13	WOODCOCKVILLE SH 51-14	ZIMMERMAN SH 51-15



Hydrogeology by: A.M. Kern 1992-1994
Geology after: H. Williams 1960-68 and T.T.G. Dwyer 1968; A.L. Abbot 1967-68 and 1980-82; P.A. Morris 1989-90; C.P. Swager 1989-90; 1990-91; and 1994; C.P. Swager and T.J. Griffin 1990; R.A. Smith 1992
Compiled and produced using computer-aided graphic applications, and available in digital form
Topographic base supplied by the Department of Land Administration and modified from geological field survey
Published by and available from the Geological Survey of Western Australia, Department of Minerals and Energy, 100 Plain Street, East Perth, 6004
Printed by Advance Press Pty Ltd, Western Australia
The recommended reference for this map is: KERN, A.M., 1995, Kurnalpi, W.A., Western Australia Geological Survey, 1:250 000 Hydrogeological Series



AQUIFER TYPES	
	Surface deposits—local aquifers (not saturated everywhere); minor groundwater resources
	Sedimentary rocks in palaeochannels—major aquifers, major groundwater resources
	Sedimentary rocks in palaeochannels—aquifers, no groundwater resources (section only)
	Fractured and deeply weathered rocks—local aquifers, minor groundwater resources, locally large supplies from fracture zones

HYDROGEOLOGY	
	Quaternary deposits—mostly clay
	Alluvium and colluvium—clay, sand, gravel, coarse palaeochannels
	PERCOLL SHALE and equivalents—shale, siltstone, minor sand; restricted to palaeochannels (section only)
	MILLBANK SANDSTONE and equivalents—sandstone, siltstone, restricted to palaeochannels, overlain by PERCOLL SHALE
	Male and ultramafic dikes; outcrop; interpreted where dashed
	Quartz veins
	Doleritic rock, includes porphyry; outcrop (indicated by overprint); westward
	Banded granitic gneiss; outcrop (indicated by overprint); westward
	Chert and banded iron-formation; outcrop; interpreted where dashed
	Sedimentary and felsic volcanic and volcanoclastic rocks
	Mafic and ultramafic rocks

SYMBOLS	
	hydrogeological boundary, concealed
	bank or stream zone
	strongly altered rock
	intermittent drainage
	major surface water divide
	claypan or interbedded clay, sand to siltstone
	play lake, saline to hypersaline
	rock hole, gramine hole, waterhole
	snak
	dam, tank
	water pipeline
	sewer
	abandoned
	position doubtful
	apertures (1985-1988, in AHD)
	direction of groundwater flow
	watermark (section only)
	production bore, >50 m/day
	bore
	well
	bore, no data
	well, no data
	well, abandoned
	bordered name, centre of bore
	saline storage
	GLS W.A. exploratory drilling line
	groundwater pipeline
	major mine, major outcrop
	significant mine, outcrop
	mining locality
	mine name
	highway with national route marker
	formed road
	track
	railway, with siding
	abandoned railway
	loading ground
	township, population greater than 1000
	homestead
	locally
	rational path boundary
	transfer or microwave repeater site
	horizontal control, major minor
	contour line, 5 metre interval

