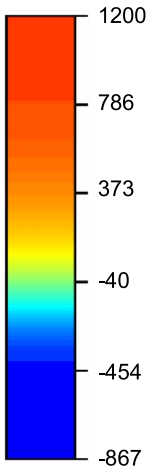
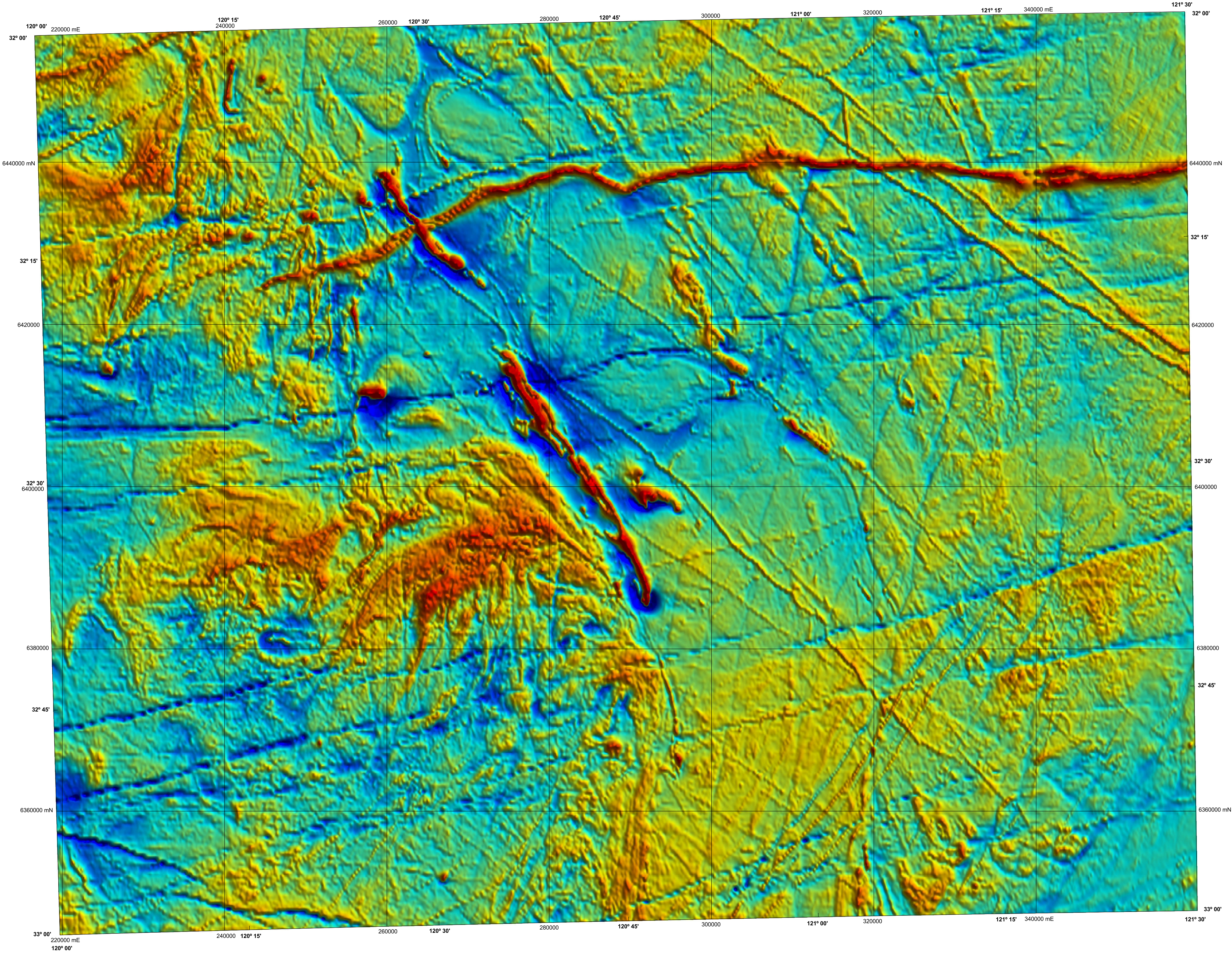


1:250 000 TOTAL MAGNETIC INTENSITY IMAGE

LAKE JOHNSTON
GEOLOGICAL SURVEY OF WESTERN AUSTRALIA

SHEET SI 51-1



nT
Residual values with the
International geomagnetic
reference field removed

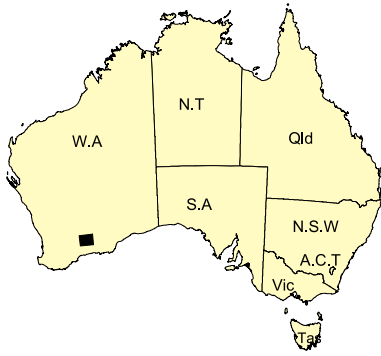
Data acquired in 2005 were merged by Geoscience Australia with multi-client data, flown between 1993 and 1996. These data now form part of the National Airborne Geophysical Database.

Published by the Geological Survey of Western Australia. Copies are available from the Information Centre, Department of Industry and Resources, 100 Plain Street, East Perth, WA 6004. Telephone (08) 9222 3459, Fax (08) 9222 3444, www.doir.wa.gov.au

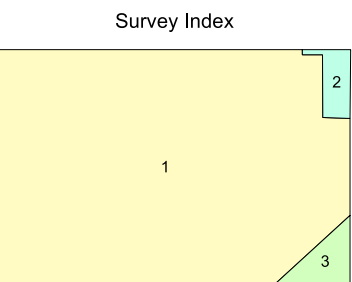
Secondary data processing R. Franklin
Image processing J. H. Watt
Cartography S. Jefferys
Geophysical Project Manager S. H. D. Howard

These data are available in digital form from the Sales Centre, Geoscience Australia, GPO Box 378, Canberra, ACT 2601. Telephone (02) 6249 9966. Fax (02) 6249 9962. Digital data are also available for download from Geoscience Australia, www.ga.gov.au/gadds

The recommended reference for this map is:
GEOLOGICAL SURVEY OF WESTERN AUSTRALIA, 2005, Lake Johnston, W.A. Sheet SI 51-1:
Western Australia Geological Survey, 1:250 000 Total Magnetic Intensity Image.



SHEET INDEX		
SOUTHERN CROSS SI 51-12	BOORABBIN SI 51-13	INDOGMOOLTHA SI 51-14
HYDEN SI 51-4	LAKE JOHNSTON SI 51-1	NORRISMAN SI 51-2
NEVESGATE SI 51-6	PARSONS CREEK SI 51-5	COORANRUP SI 51-8



The image is compiled from the three surveys that are listed below, and the areas covered by each are shown on the survey index. The grid cell size is 80 m.

Survey ID	Survey name	Flight line spacing	Flight line direction	Ground clearance	Contractor	Date	Client
1	Boorabbin – Lake Johnston	400 m	90° – 270°	60 m	Fugro	2005	GSWA/GA
2	Yilgarn – Boorabbin	200 m	90° – 270°	60 m	World Geoscience	1993	Multi-client
3	Yilgarn – Peak Charles	400 m	90° – 270°	60 m	World Geoscience	1996	Multi-client

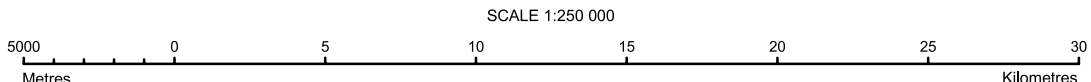


Department of
Industry and Resources

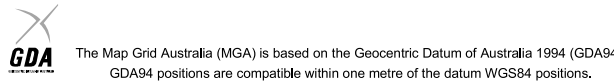
Geological Survey of
Western Australia



NGA
PRODUCT OF THE NATIONAL
GEOSCIENCE AGREEMENT



UNIVERSAL TRANSVERSE MERCATOR PROJECTION
HORIZONTAL DATUM: GEODETIC DATUM OF AUSTRALIA
Grid lines indicate 20 000 metre interval of the Map Grid Australia Zone 51



GEOLOGICAL SURVEY OF WESTERN AUSTRALIA
TOTAL MAGNETIC INTENSITY IMAGE
LAKE JOHNSTON
SHEET SI 51-1

First Edition 2005
Version 1.0 - June 2005

© Western Australia 2005

WARNING: Inks are water soluble and will
fade with prolonged exposure to light