

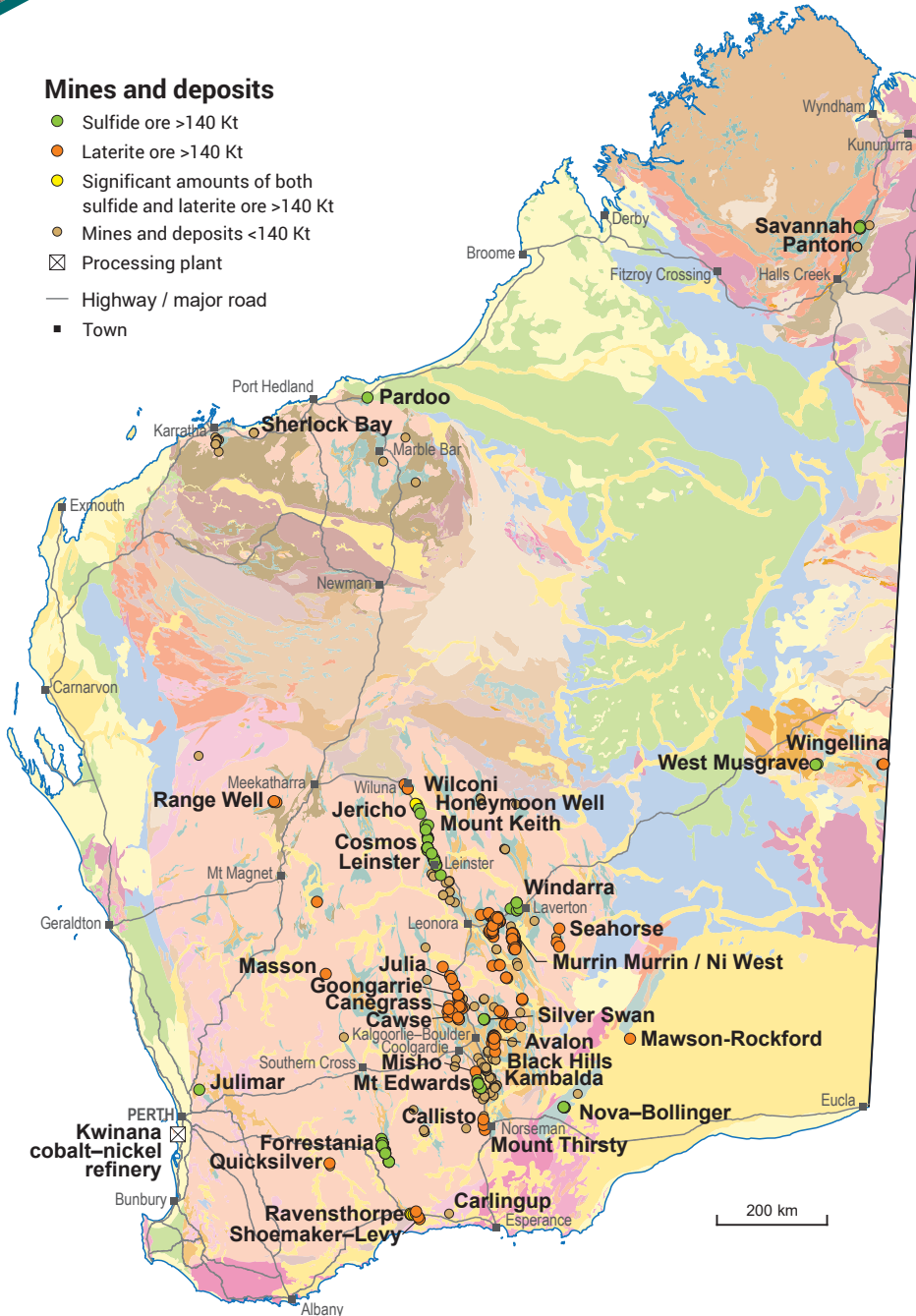
NICKEL-COBALT

INVESTMENT OPPORTUNITIES

WORLD-CLASS RESOURCE PROVINCE | SECURE INVESTMENT LOCATION
WORLD-LEADING GEOSCIENTIFIC DATA | GLOBAL MINING SERVICES INDUSTRY

Mines and deposits

- Sulfide ore >140 Kt
- Laterite ore >140 Kt
- Significant amounts of both sulfide and laterite ore >140 Kt
- Mines and deposits <140 Kt
- ☒ Processing plant
- Highway / major road
- Town



Western Australia hosts world-class nickel deposits

- Western Australia is ranked among the top global producers of nickel and cobalt
- In 2022–23 nickel sales reached \$5.7 billion from seven operations located in the Eastern Goldfields, Albany Fraser and Kimberley regions
- Sales value of cobalt reached \$368 million in 2022–23, produced as a byproduct from the Murrin Murrin, Cassini, Shoemaker-Levy, Nova-Bollinger and Savannah nickel mines
- Cobalt Blue Holdings completed a Scoping Study for the first Australian cobalt refinery at Kwinana that will produce battery grade cobalt sulfate

New mining and exploration activity

- Nickel maiden Resource Estimates were announced for the Mawson deposit (Rockford Project; Legend Mining), Callisto deposit (Norseman Project; Galileo Mining) and Silver Lake deposit (25H; Lunnon Metals)
- Recent Mineral Resource Estimate updates were announced for the Mt Thirsty (Conico / Greenstone Resources), Julimar (Chalice Mining), NiWest (Alliance Nickel), Mt Edwards (Widgie Nickel), Carlingup (NickelSearch), Panton (Future Metals) and Beta Hunt (Karora Resources) projects
- New discoveries were announced for Seahorse (lateritic; MTM Critical Minerals), Misho (Maximus Resources), Sherlock Bay (Sabre Resources) and Masson (Nimy Resources). Exploration continues across the State. Several companies have announced high-grade scandium results in association with nickel deposits (e.g. Quicksilver, Mount Thirsty)

\$5743 m
Sales value



160 371 t
Tonnes sold



9839
Full-time
employees



\$10 755 m*
Investment
projects



5th
Production
world ranking



(2022–23 financial year; for nickel only)

* Includes projects planned, possible, committed or under construction as of September 2023



Department of Energy, Mines,
Industry Regulation and Safety

demirs.wa.gov.au

Geological Survey of
Western Australia



Nickel projects with resources >140 Kt contained nickel

Mineral Resource Estimates reported in accordance with JORC (2012) unless otherwise stated

Project	Status	Owner	Resources (Mt)	Av. grade (% Ni)	Contained Ni (kt)	Av. grade (% Co)	Contained Co (t)	Resource date
Kalgoorlie Nickel Project	Feasibility	Ardea Resources	853.5	0.72	6 107	0.05	386 355	30/06/2023
Mt Keith	Operating	BHP Group	612.0	0.58	3 558			30/06/2023
Range Well	Exploration	EV Metals	353.0	0.65	2 302	0.04	145 490	01/10/2021
Murrin Murrin	Operating	Glencore Plc	225.2	1.00	2 258	0.08	173 140	31/12/2022
Leinster	Operating	BHP Group	192.3	1.01	1 942			30/06/2023
Wingellina	Feasibility	Nico Resources	182.5	0.92	1 682	0.07	126 356	14/10/2016
Ravensthorpe [^]	Care and maintenance	First Quantum / Pohang Iron and Steel Co.	304.3	0.55	1 680	0.03	87 160	31/12/2022
Avalon [^]	Exploration	Wingstar Investments	169.8	0.83	1 403			31/12/2012
Honeymoon Well	Exploration	BHP Group	176.8	0.69	1 218			30/06/2021
Cawse [^]	Exploration	Wingstar Investments	176.5	0.69	1 218			31/12/2011
West Musgrave	Feasibility	BHP Group	389.1	0.30	1 170			30/06/2023
NiWest	Pre-feasibility	Alliance Nickel	93.4	1.04	973	0.07	65 072	24/10/2023
Julimar	Scoping	Chalice Mining	550.7	0.16	863	0.02	83 095	28/03/2023
Wilconi	Exploration	Lotus Resources / Wiluna Mining Corporation	73.0	0.80	580	0.04	30 900	05/06/2023
Cosmos	Under development	IGO	39.8	1.27	507			30/06/2023
Jericho	Exploration	BHP Group	86.1	0.55	477			30/06/2023
Coglia	Exploration	Panther Metals	70.6	0.64	449	0.05	32 136	27/06/2022
Mt thirsty	Pre-feasibility	Conico / Greenstone Resources	66.3	0.43	284	0.06	41 870	26/04/2023
Range Well Chromium	Exploration	EV Metals	63.5	0.38	241	0.04	25 400	24/09/2013
Silver Swan – Black Swan	Feasibility	Poseidon Nickel	28.9	0.77	222			07/06/2023
Savannah	Care and maintenance	Panoramic Resources	14.6	1.49	217	0.10	13 896	05/10/2023
Canegrass [^]	Exploration	Gardner, Robert Charles	29.6	0.71	209	0.06	17 760	27/11/2007
Julia [^]	Exploration	Wingstar Investments	26.4	0.74	195			31/10/2011
Mt Edwards Nickel	Scoping	Widgie Nickel	13.1	1.47	193	0.04	2 843	15/01/2024
Panton	Feasibility	Future Metals	92.8	0.20	182	0.02	14 407	26/10/2023
Quicksilver	Exploration	Golden Mile Resources	26.3	0.65	170	0.04	11 354	19/11/2018
Norseman–Callisto	Exploration	Galileo Mining	42.6	0.37	158	0.11	27 386	21/10/2023
Carlingup–Nindilbillup [*]	Exploration	Nickelsearch	27.7	0.56	156	0.02	5 500	30/03/2023
Pardoo–Highway [^]	Exploration	Mantle Minerals	50.0	0.30	152	0.03	15 000	31/03/2010
Windarra/ Poseidon [†]	Exploration	Poseidon Nickel	9.7	1.53	148			16/07/2014

Mineral Resource Estimates are rounded

[†] Mineral Resource reported in accordance with the JORC Code (2004)

[^] Mineral Resource reported in accordance with other qualifying code or standard aligned with CRIRSCO reporting standards

^{*} RAV series deposits – komatiite-hosted nickel sulfide deposit, while John Ellis – laterite hosted

Spatial and resource estimates data sourced from WA Mines and Mineral Deposit database (MINEDEX)



Sulfide



Laterite



Laterite + sulfide

For more information

MINEDEX is a spatial and textual database of mining and exploration activity

MINEDEX www.demirs.wa.gov.au/minedex

GeoVIEW.WA is a free GIS-based spatial viewer

GeoVIEW.WA www.demirs.wa.gov.au/geoview

Contact us

Mineral Investment Specialist
Geological Survey and Resource Strategy Division
Email: minerals.investors@dmirs.wa.gov.au
Tel: +61 8 9222 3890

The DEMIRS MINEDEX, Statistics, and Geoscience and Titles Information teams have contributed to the production of this flyer



Department of Energy, Mines,
Industry Regulation and Safety

April 2024

Geological Survey of
Western Australia

