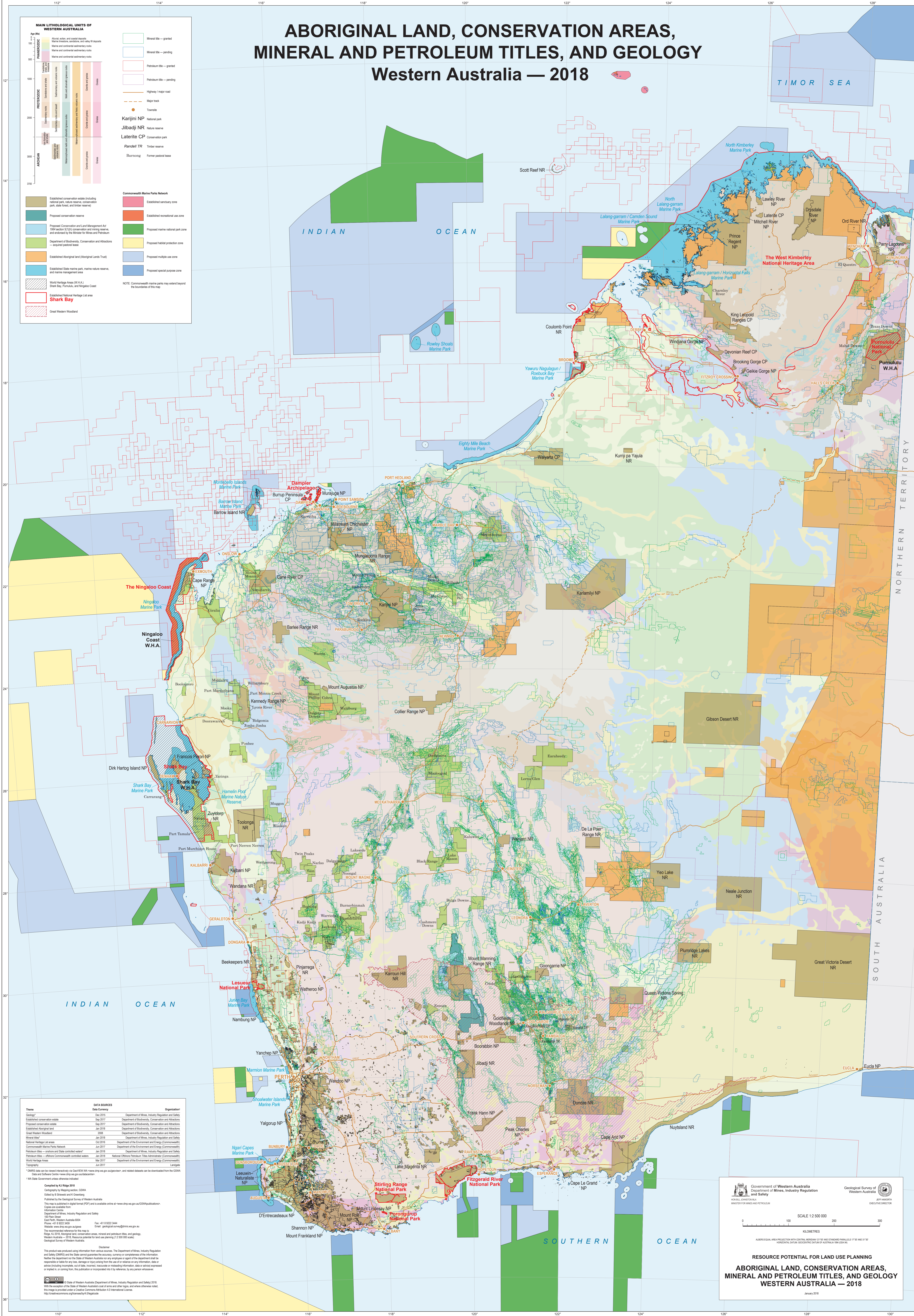


# ABORIGINAL LAND, CONSERVATION AREAS, MINERAL AND PETROLEUM TITLES, AND GEOLOGY

## Western Australia — 2018



**MAIN LITHOLOGICAL UNITS OF WESTERN AUSTRALIA**

Age (Ma)

PHANEROZOIC

PROTEROZOIC

ARCHEAN

Mineral title — granted

Mineral title — pending

Petroleum title — granted

Petroleum title — pending

Highway / major road

Major track

Townsite

Karijini NP

Jilbadi NP

Laterite CP

Randell TR

Barrington

Former pastoral lease

Established conservation estate (including national park, nature reserve, conservation park, state forest, and timber reserve)

Proposed conservation reserve

Proposed conservation and land management Act 1984 section 5(1)(b) conservation and mining reserves, and endorsed by the Minister for Mines and Petroleum

Department of Biodiversity, Conservation and Attractions — proposed pastoral lease

Established Aboriginal land (Aboriginal Lands Trust)

Established State marine park, marine nature reserve, and marine management area

World Heritage Area (W.H.A.)

Shark Bay, Purnululu, and Ningaloo Coast

Shark Bay

Great Western Woodland

Commonwealth Marine Parks Network

Established sanctuary zone

Established recreational use zone

Proposed marine national park zone

Proposed habitat protection zone

Proposed multiple use zone

Proposed special purpose zone

NOTE: Commonwealth marine parks may extend beyond the boundaries of this map

**DATA SOURCES**

Theme	Date	Source	Organization
Geology	Dec 2015	Department of Mines, Industry Regulation and Safety	
Established conservation estate	Sep 2017	Department of Biodiversity, Conservation and Attractions	
Proposed conservation estate	Sep 2017	Department of Biodiversity, Conservation and Attractions	
Established Aboriginal land	Jul 2016	Department of Biodiversity, Conservation and Attractions	
Coastal Reserve Woodland	2008	Department of Biodiversity, Conservation and Attractions	
Mineral title	Jan 2016	Department of Mines, Industry Regulation and Safety	
Natural Heritage List areas	Oct 2016	Department of the Environment and Energy (Commonwealth)	
Commonwealth Marine Parks Network	Jul 2017	Department of the Environment and Energy (Commonwealth)	
Petroleum title — offshore and State controlled waters	Jan 2016	Department of Mines, Industry Regulation and Safety	
Petroleum title — offshore Commonwealth controlled waters	Jan 2016	National Offshore Petroleum Title Administrator (Commonwealth)	
World Heritage Areas	Mar 2017	Department of the Environment and Energy (Commonwealth)	
Topography	Jan 2017	Department of the Environment and Energy (Commonwealth)	

©2018 data can be licensed interactively via GeoServer (BAA) or via geo.gov.au/geoportal, and related datasets can be downloaded from the CSIR.

Data and Software Centre - [www.dsp.gov.au/data-software-centre](http://www.dsp.gov.au/data-software-centre)

1:6M Data Government unless otherwise indicated

**COPYRIGHT BY R. J. B. 2018**

Cartography by Mapping Solutions, GWA

Edited by R. J. B. and K. D. Dwyer

Published by the Geological Survey of Western Australia

This map is published in digital format (PDF) and is available online at [www.dsp.gov.au/GSD/Publications](http://www.dsp.gov.au/GSD/Publications)

Copyright is reserved for the Department of Mines, Industry Regulation and Safety

100 Flinders Street

East Perth, Western Australia 6004

Phone: +61 8 9222 3400

Website: [www.dsp.gov.au/gps](http://www.dsp.gov.au/gps)

The recommended reference for this map is:

Ridge, A. J. 2018. Aboriginal land, conservation areas, mineral and petroleum titles, and geology. Western Australia — 2018. Resource potential for land use planning (1:6 000 000 scale). Geological Survey of Western Australia.

This product was produced using information from various sources. The Department of Mines, Industry Regulation and Safety (DMIRS) and the State cannot guarantee the accuracy, currency or completeness of the information. Neither the Department nor the State of Western Australia nor any employee or agent of the department shall be responsible in any way for any loss, damage or injury arising from the use of or reliance on any information, data or advice (including economic, social, data, mineral, industrial or otherwise) information, data or advice represented or implied in, or arising from, this publication or incorporated into it by reference, by any person whatsoever.

**DISCLAIMER**

© State of Western Australia Department of Mines, Industry Regulation and Safety 2018.

With the exception of the State of Western Australia's coat of arms and other logos, and where otherwise noted, this image is provided under a Creative Commons Attribution 4.0 International License.

<http://creativecommons.org/licenses/by/4.0/>

Government of Western Australia  
Department of Mines, Industry Regulation and Safety

Geological Survey of Western Australia

MINISTER FOR MINES AND PETROLEUM

EXECUTIVE DIRECTOR

SCALE 1:2 500 000

0 100 200 300 KILOMETRES

AUSTRALIAN EQUAL AREA PROJECTION WITH CENTRAL MERIDIAN 117°00' AND STANDARD PARALLELS 17°00' AND 31°00' HORIZONTAL DATUM: GEODETIC DATUM 1984 AUSTRALIA 1984 (GDA 84)

**RESOURCE POTENTIAL FOR LAND USE PLANNING**

**ABORIGINAL LAND, CONSERVATION AREAS, MINERAL AND PETROLEUM TITLES, AND GEOLOGY**

**WESTERN AUSTRALIA — 2018**

January 2018