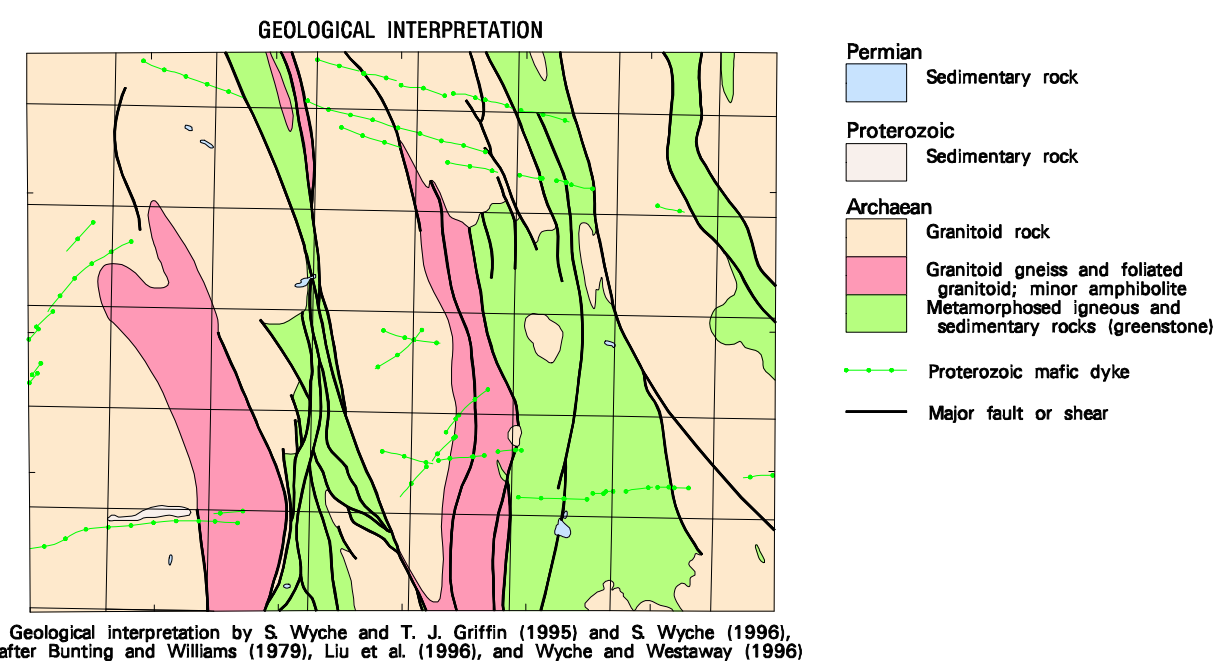
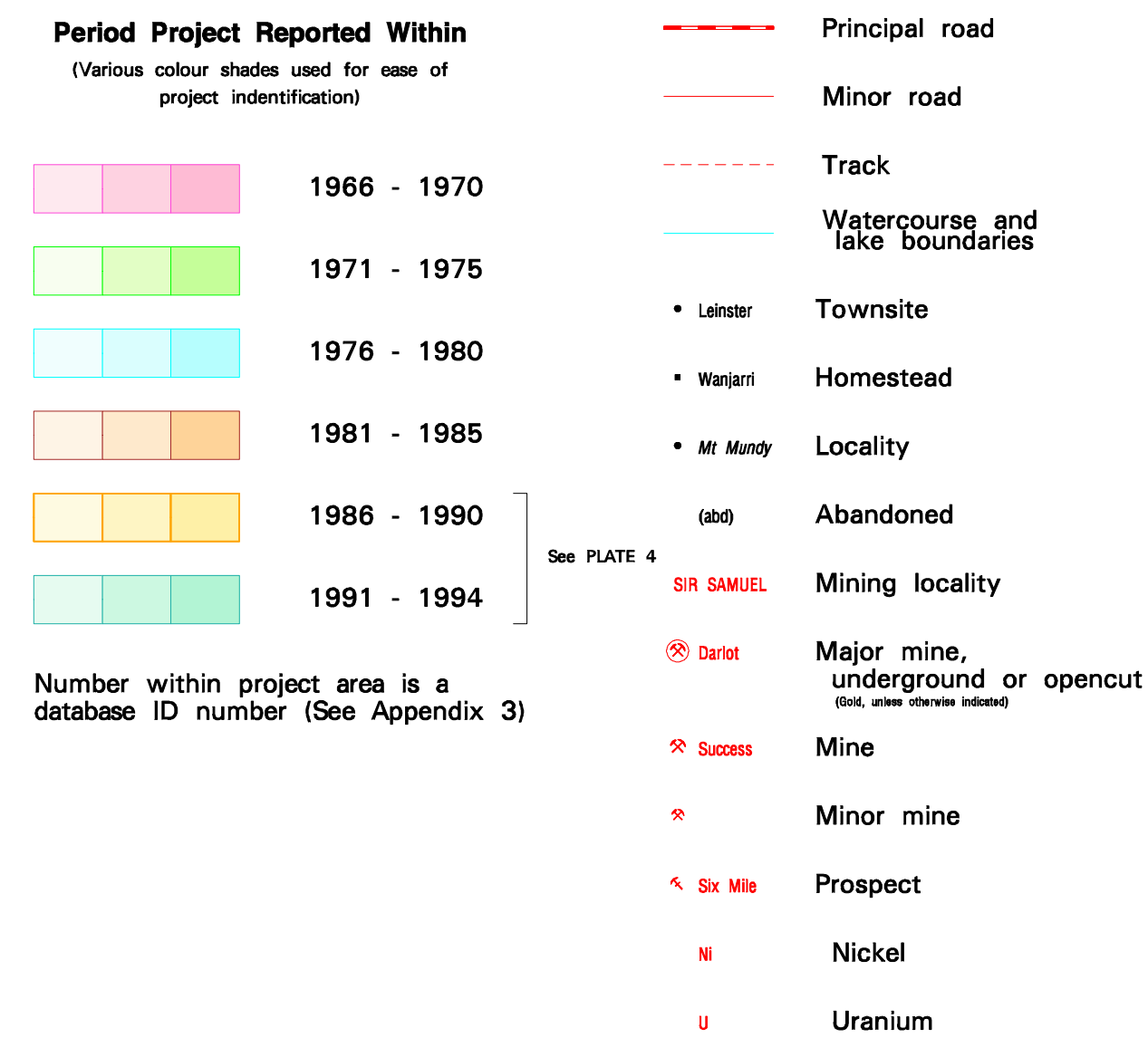


COMPANY PROJECTS WITH SURFACE
GEOCHEMISTRY DATA IN OPEN FILE
REPORTS (at August 1995)

PROJECTS REPORTED BETWEEN 1966 AND 1985



SHEET INDEX		
GLENGARRY SG 50-12	WILUNA SG 51-9	KINGSTON SG 51-10
SANDSTONE SG 50-16	SIR SAMUEL SG 51-13	DUKETON SG 51-14
YOUANMI SH 50-4	LEONORA SH 51-1	LAVERTON SH 51-2



INDEX TO 1:100 000 MAP SHEETS WITHIN SIR SAMUEL 1:250 000		
YEELIRRIE 2943	MOUNT KEITH 3043	WANGGANNOO 3143
DEPOT SPRINGS 2942	SIR SAMUEL 3042	DARLOT 3142

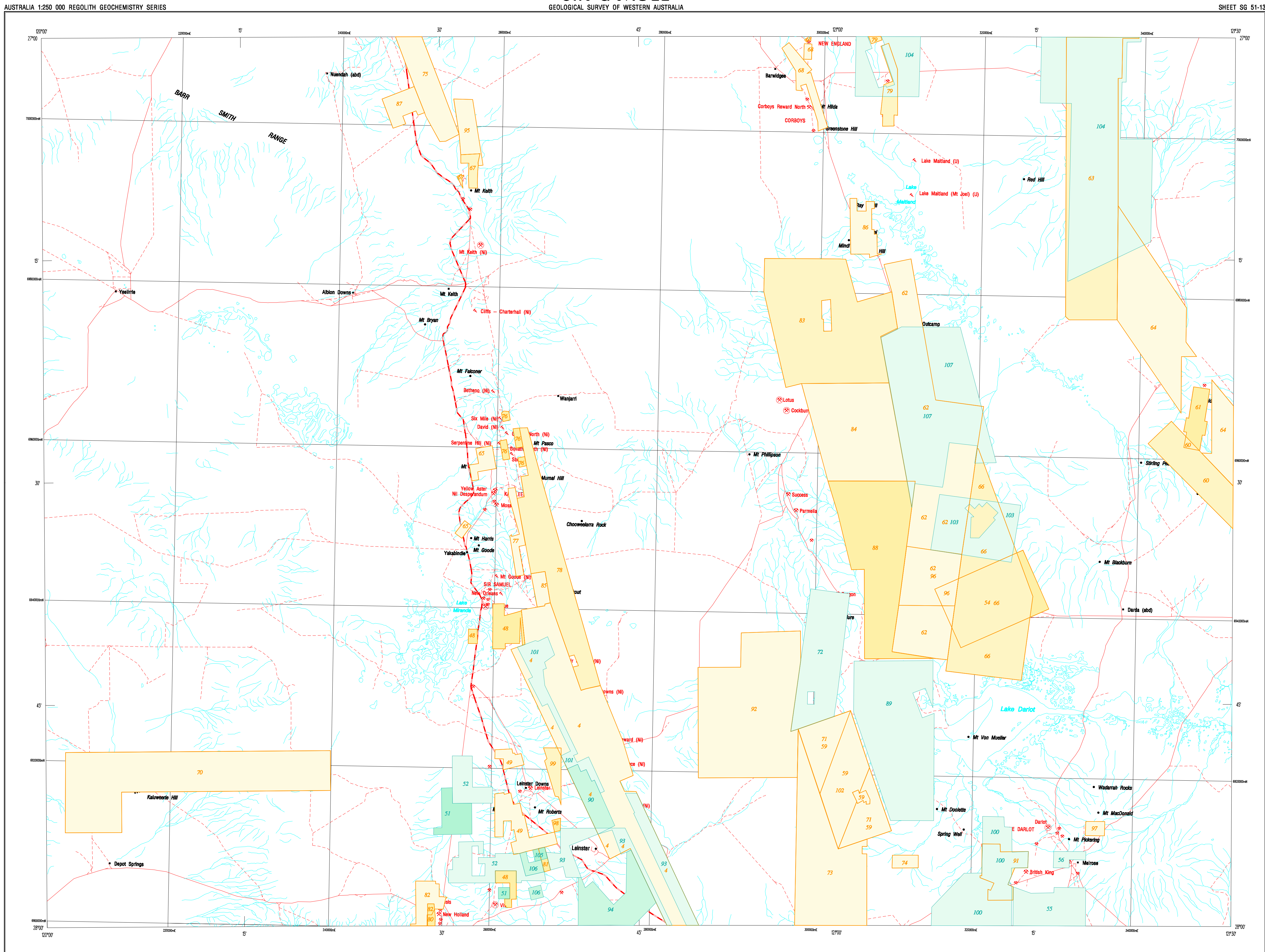
COMPANY PROJECTS WITH SURFACE
GEOCHEMISTRY DATA IN OPEN FILE
REPORTS (at August 1995)

PROJECTS REPORTED BETWEEN 1966 AND 1985

REGOLITH GEOCHEMISTRY SERIES
SIR SAMUEL

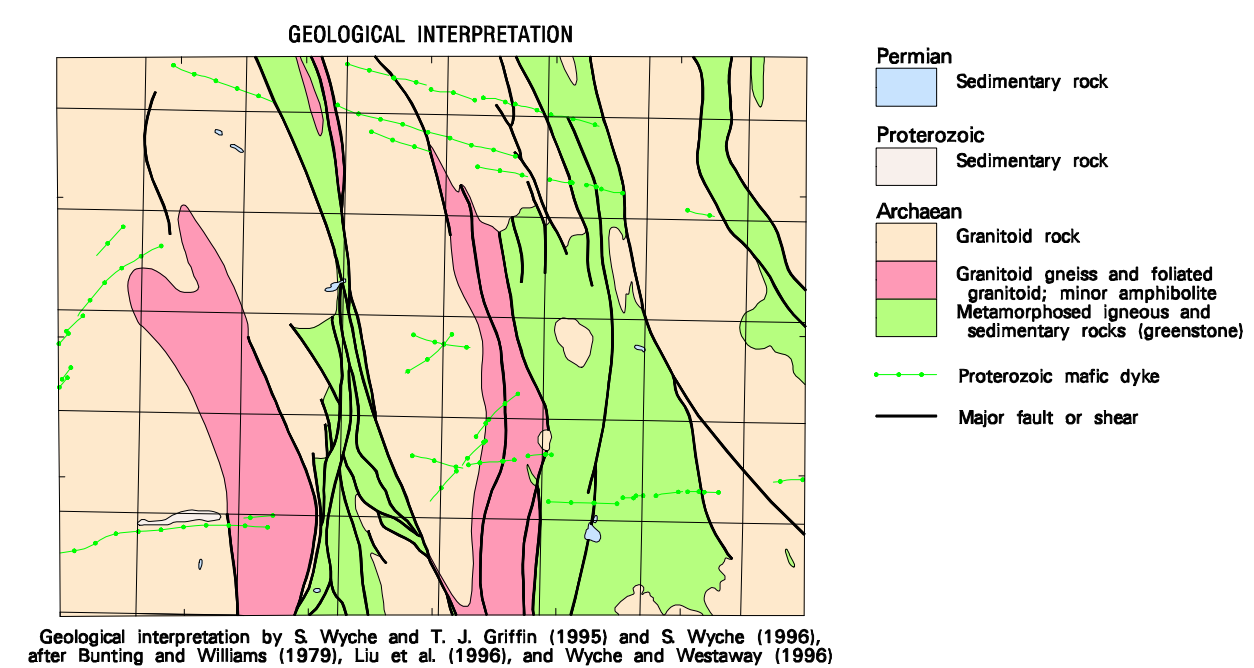
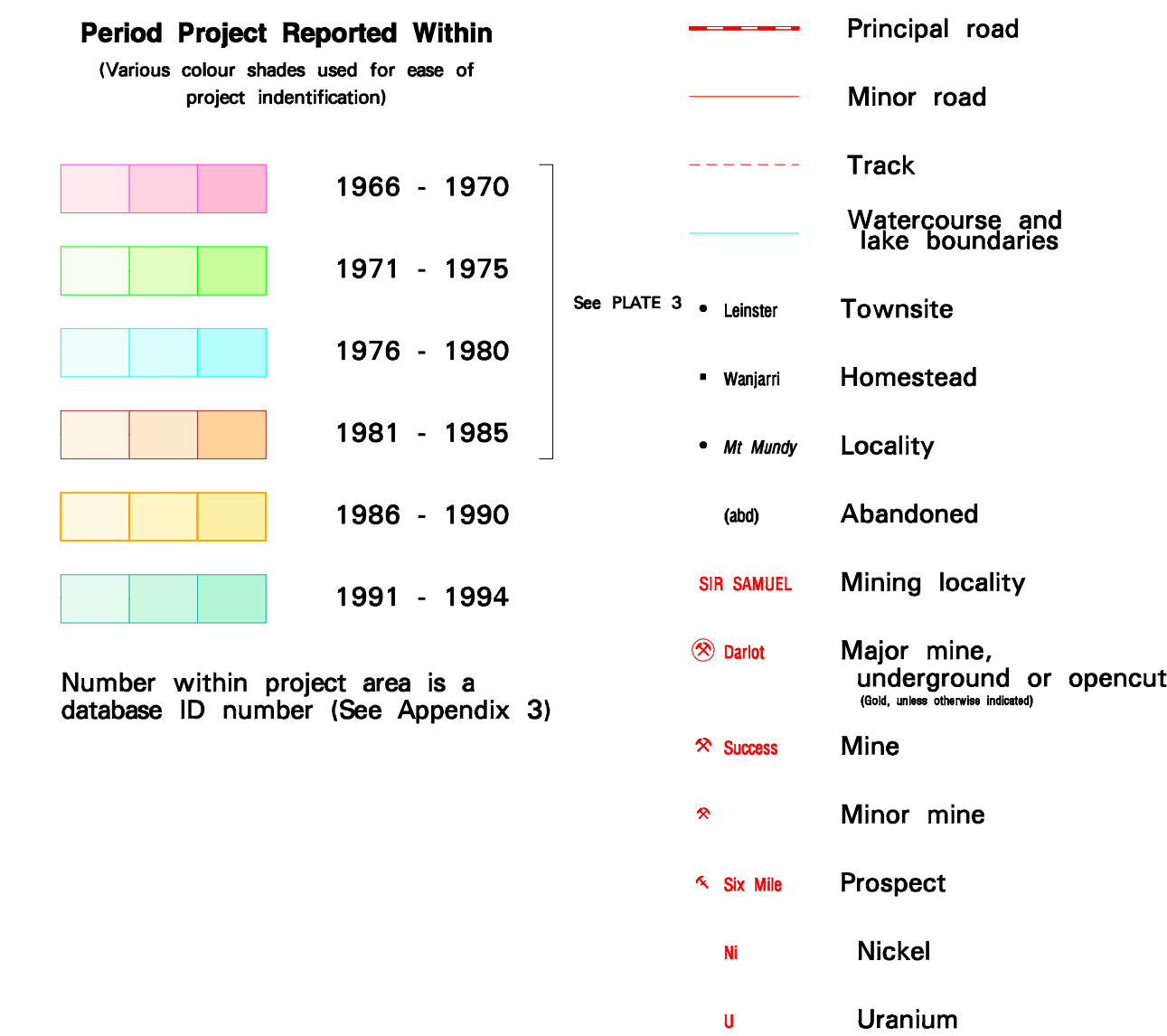
SHEET SG 51-13
FIRST EDITION 1996
© Western Australia

WARNING: Inks are water soluble and will fade with prolonged exposure to light.

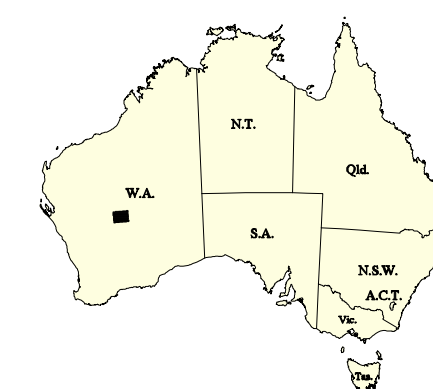


COMPANY PROJECTS WITH SURFACE
GEOCHEMISTRY DATA IN OPEN FILE
REPORTS (at August 1995)

PROJECTS REPORTED BETWEEN 1986 AND 1994



SHEET INDEX		
GLENGARRY SG 50-12	WILUNA SG 51-9	KINGSTON SG 51-10
SANDSTONE SG 50-16	SIR SAMUEL SG 51-13	DUKETON SG 51-14
YUJANMI SH 50-4	LEONORA SH 51-1	LAVERTON SH 51-2



INDEX TO 1:100 000 MAP SHEETS WITHIN SIR SAMUEL 1:250 000		
YEELIRRIE 2943	MOUNT KEITH 3043	WANGGANNOC 3143
DEPOT SPRINGS 2942	SIR SAMUEL 3042	DARLOT 3142

COMPANY PROJECTS WITH SURFACE
GEOCHEMISTRY DATA IN OPEN FILE
REPORTS (at August 1995)

PROJECTS REPORTED BETWEEN 1986 AND 1994

REGOLITH GEOCHEMISTRY SERIES
SIR SAMUEL

SHEET SG 51-13
FIRST EDITION 1996
© Western Australia

WARNING: Inks are water soluble and will fade with prolonged exposure to light