

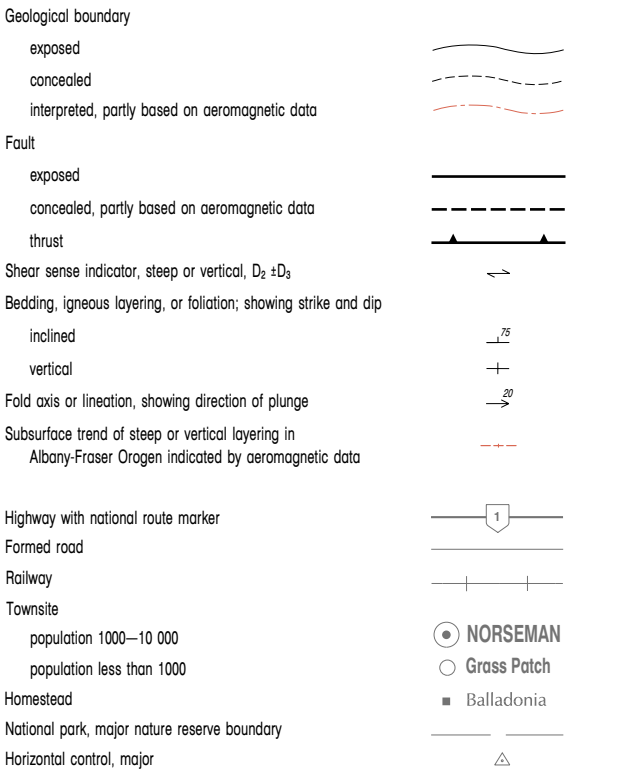
# ESPERANCE

**SHEET SI 5**

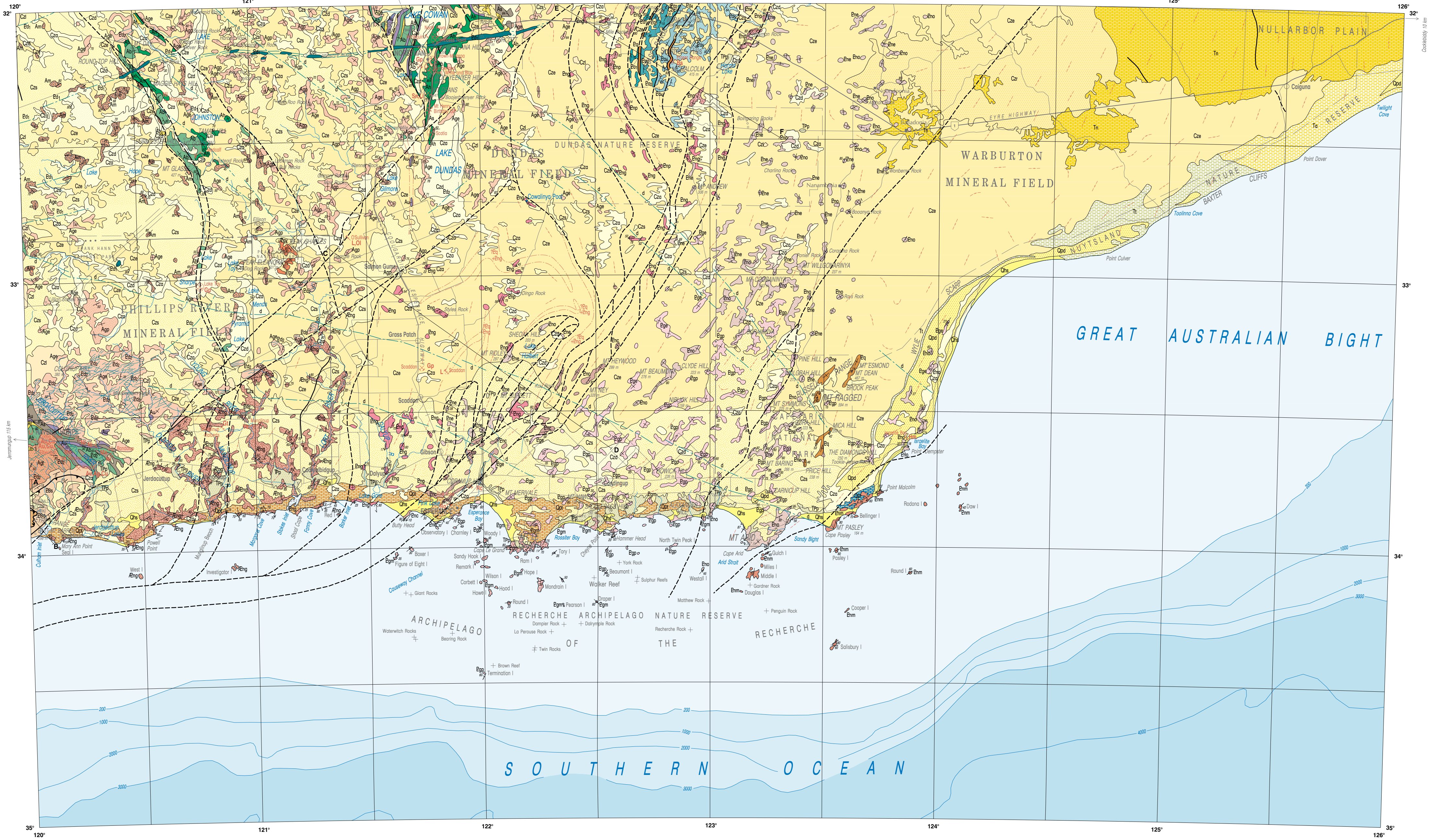
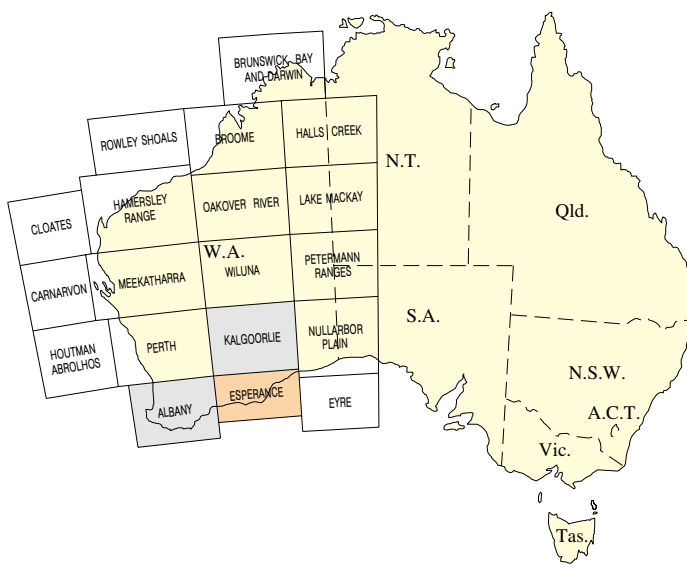
## REFERENCE

## SYMBOLS

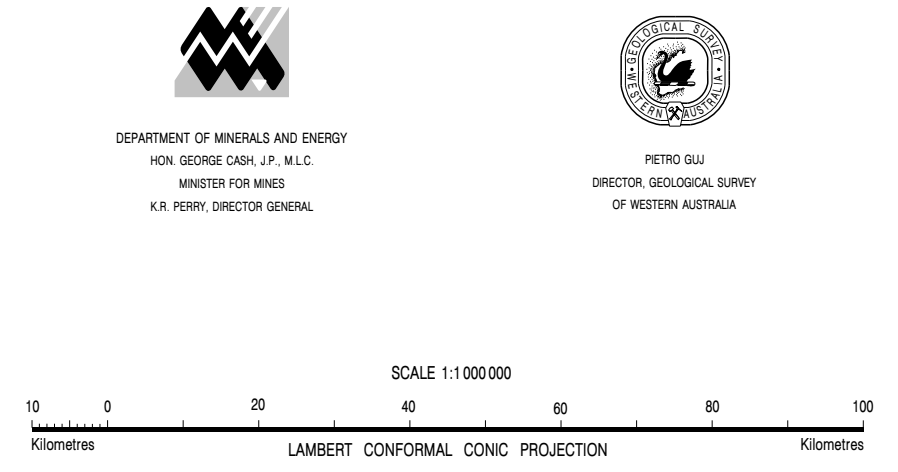
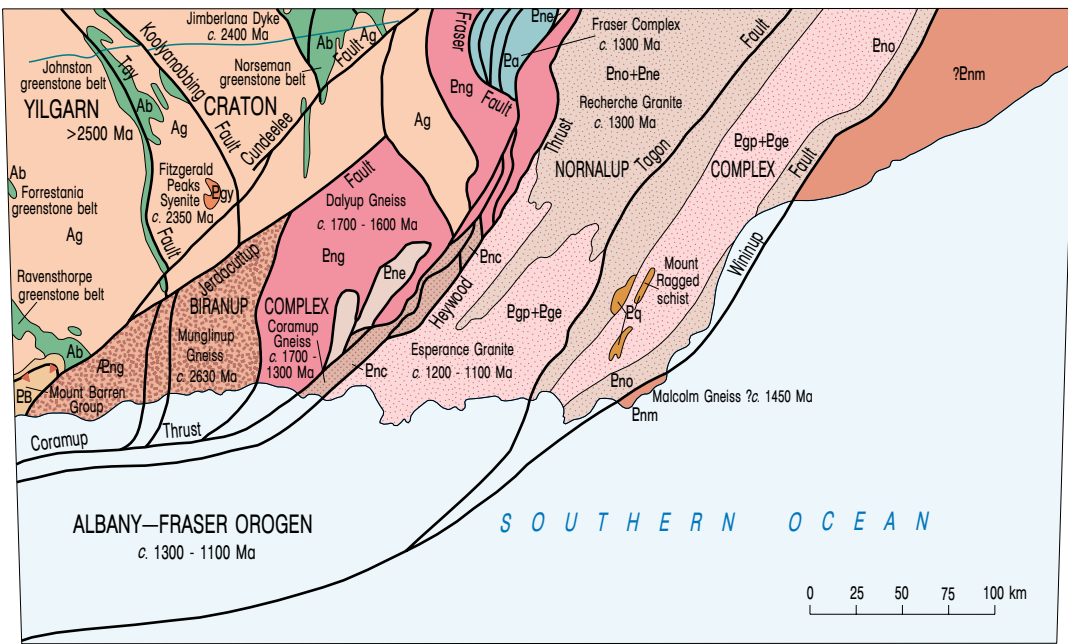
**AUSTRALIA 1:1 000 000 GEOLOGICAL SERIES**



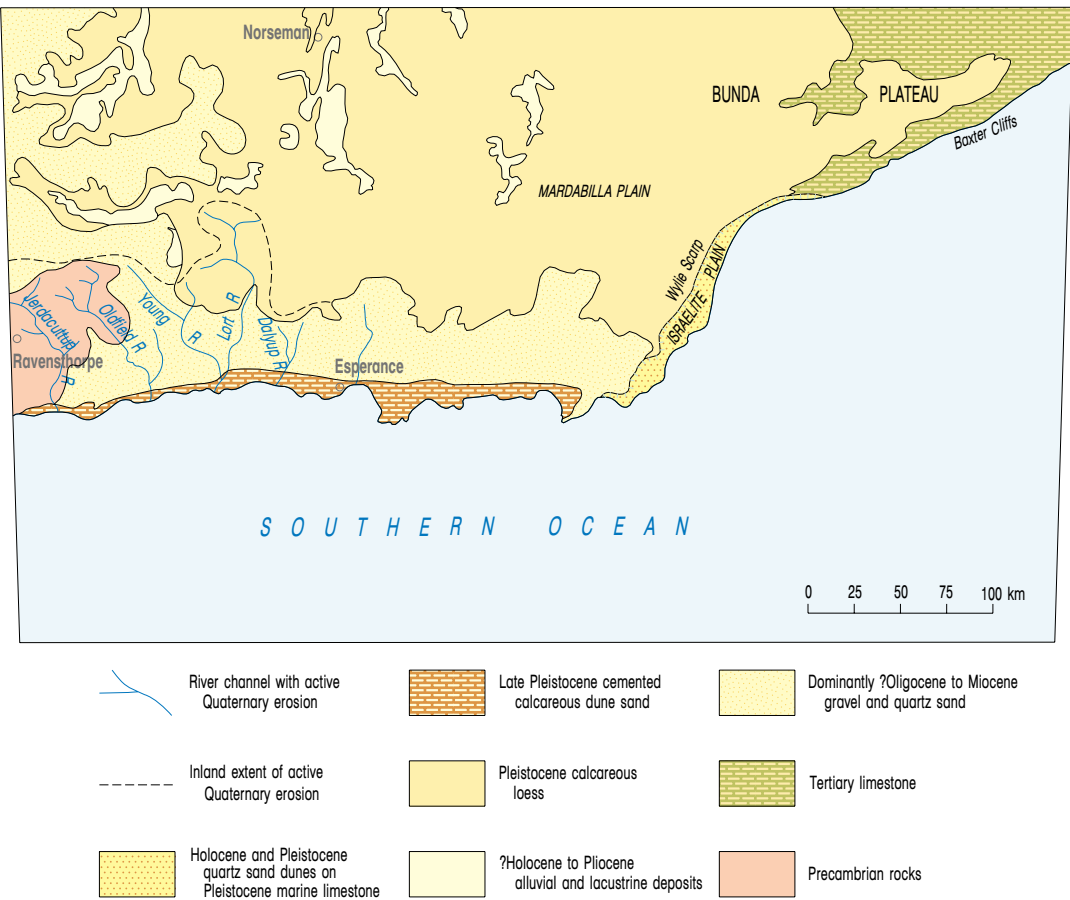
## INDEX TO 1:1 000 000 GEOLOGICAL SERIES



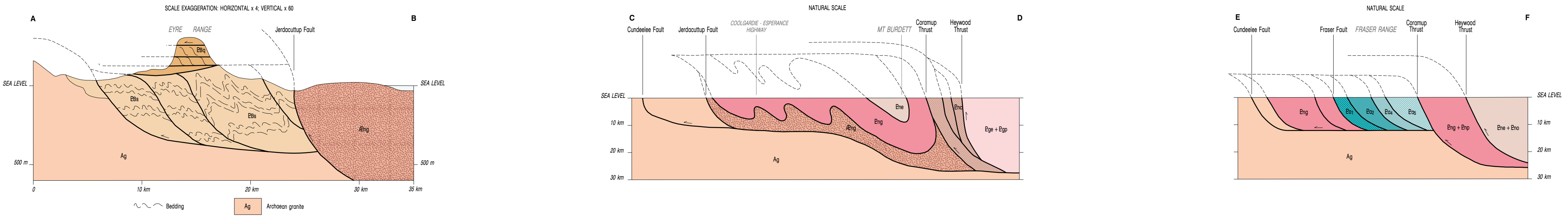
## SIMPLIFIED PRECAMBRIAN GEOLOG



## MAIN FEATURES OF THE REGOLITH AND GEOMORPHOLOGY



## SIMPLIFIED SECTIONS



# ESPERANCE

SHEET SI 51

SECOND EDITION 199

Western Australia

Compiled by: J. S. Myers 1991-9

Geology by: J.S. Myers 1990-91

and after 1250000 Geological Series maps  
DOEFL, J.J.G., NEWTON SMITH, J., and KOEHN, P.R., 1972, Nonseam  
GOWER, C.F., and BUNTING, J.A., 1974, Lake Johnston  
LOWRY, D.C., 1960, Culver  
LOWRY, D.C., DOEFL, J.J.G., and KOEHN, P.R., 1971, Baldonia  
LOWRY, D.C., DOEFL, J.J.G., KOEHN, P.R., and KREWALDT, M., 1972, Molokai-Cape Aiea  
MORGAN, K.M., 1972, Espérance-Mandolin Island  
THOM, R. and LIPPLE, S.L., 1974, Reewershorpe

Edited by: C. Strong and G. Loos  
Cartography by: D. Ludbrook, P. Taylor, and R. Dubaral  
Compiled and produced using computer-assisted graphic applications, and available in digital form  
Topographic base supplied by the Department of Land Administration and modified from geological field survey  
Published by and available from the Geological Survey of Western Australia, Department of Minerals and Energy  
100 Plain Street, East Perth, W.A. 6004  
Printed by Allwest Print, Western Australia  
The recommended reference for this map is: MYERS, J.S., 1966, Esperance, W.A.: Western Australia Geological Survey, 1:100 000 Geological Series.