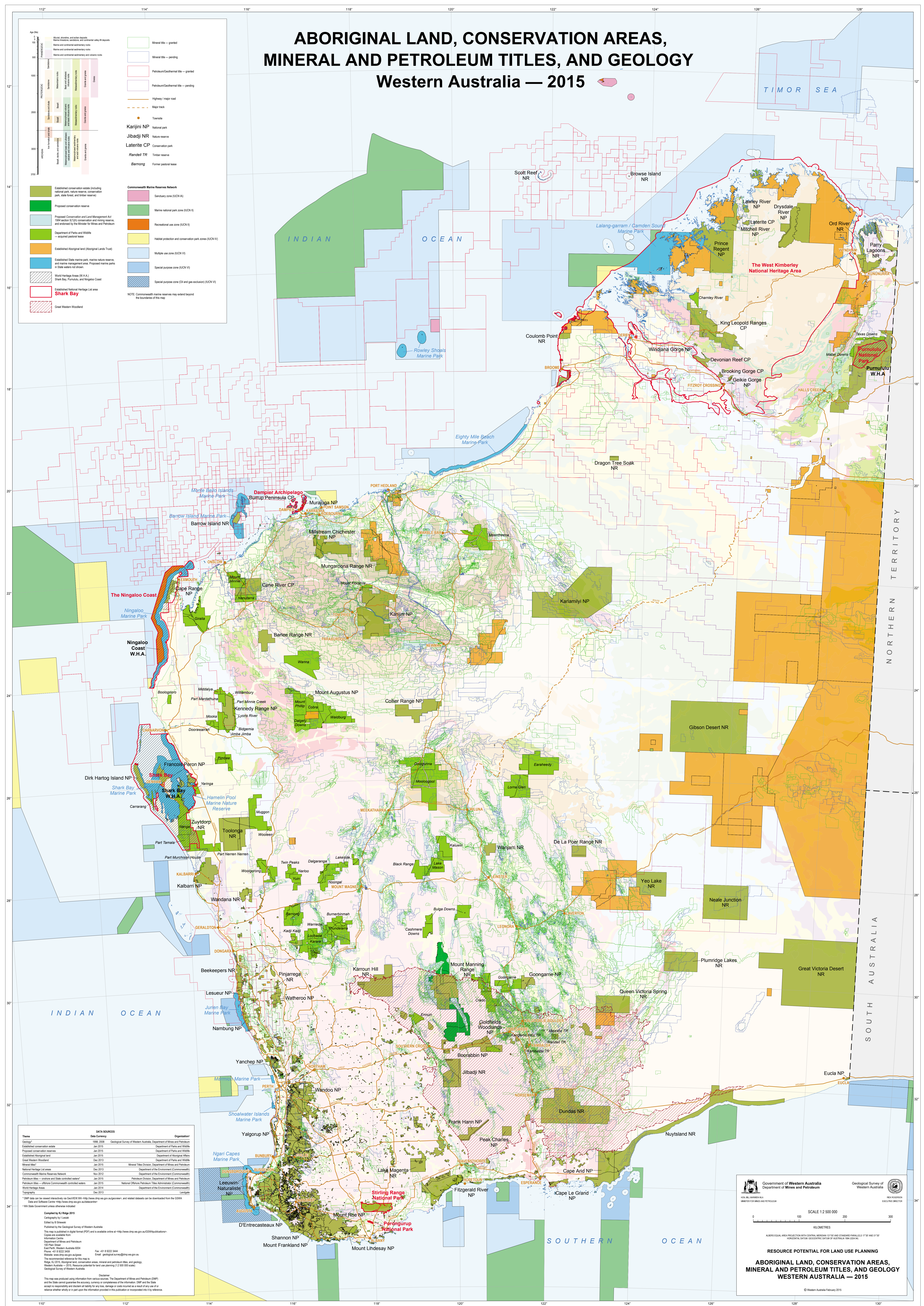


ABORIGINAL LAND, CONSERVATION AREAS, MINERAL AND PETROLEUM TITLES, AND GEOLOGY Western Australia — 2015



Theme	Data Sources	Organisations
Geology	1998, 2009	Geological Survey of Western Australia, Department of Mines and Petroleum
Established conservation estate	Jan 2015	Department of Parks and Wildlife
Proposed conservation reserves	Jan 2015	Department of Parks and Wildlife
Established Aboriginal land	Jan 2015	Department of Aboriginal Affairs
Great Western Woodland	Dec 2013	Department of Parks and Wildlife
Mineral title	Jan 2015	Mineral Titles Division, Department of Mines and Petroleum
National Heritage List areas	Dec 2013	Department of the Environment (Commonwealth)
Commonwealth Marine Reserves Network	Nov 2012	Department of the Environment (Commonwealth)
Petroleum title - offshore and State controlled waters*	Jan 2015	Petroleum Division, Department of Mines and Petroleum
Petroleum title - offshore Commonwealth controlled waters	Jan 2015	National Offshore Petroleum Titles Administration (Commonwealth)
World Heritage Areas	Jan 2014	Department of the Environment (Commonwealth)
Towns	Dec 2013	Landgate

* OMP data can be viewed interactively via GeoVIA W.A. <http://www.dmp.wa.gov.au/geoview/>, and related datasets can be downloaded from the GSDRA. Data and Software Centre <http://www.dmp.wa.gov.au/geoview/>

Compiled by KJ Rigg 2015
Copyright by Landgate
Edited by K. Rigg
Published by the Geological Survey of Western Australia
This map is published in digital format (PDF) and is available online at <http://www.dmp.wa.gov.au/GSDRA/MapPublications/>
Copies are available from:
Information Centre
Department of Mines and Petroleum
101 Pitt Street
East Perth, Western Australia 6004
Phone: +61 8 9222 3659
Fax: +61 8 9222 3444
Email: geologicalsurvey@dmpp.wa.gov.au
Website: www.dmp.wa.gov.au/geoview/
The responsibility for this map is:
Rigg, K.J. 2015. Aboriginal land, conservation areas, mineral and petroleum titles, and geology.
Western Australia — 2015. Resource potential for land use planning 1:250,000 scale.
Geological Survey of Western Australia.

Disclaimer
This map was produced using information from various sources. The Department of Mines and Petroleum (DMP) and the State Government guarantee the accuracy, currency or completeness of the information. DMP and the State accept no responsibility and disclaim all liability for any loss, damage or costs incurred as a result of any use of or reliance on the information provided in this publication or incorporated by reference.

Government of Western Australia
Department of Mines and Petroleum

Geological Survey of Western Australia

1:250,000
Kilometres

SCALE 1:250 000

ABRUS EQUAL AREA PROJECTION WITH CENTRAL MERIDIAN 117°E AND STANDARD PARALLELS 17°S AND 31°S
HORIZONTAL DATUM: GEOCENTRIC DATUM OF AUSTRALIA 1984 (GDA 84)

RESOURCE POTENTIAL FOR LAND USE PLANNING
ABORIGINAL LAND, CONSERVATION AREAS,
MINERAL AND PETROLEUM TITLES, AND GEOLOGY
WESTERN AUSTRALIA — 2015

© Western Australia February 2015