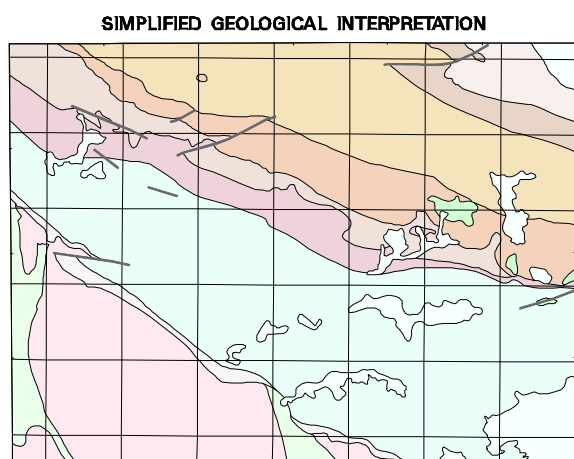


COMPANY PROJECTS WITH SURFACE GEOCHEMISTRY DATA IN OPEN-FILE REPORTS (at April 1999)

Project period reported within
(Various colour shades used for ease of project identification)

- 1966 - 1970
- 1971 - 1975
- 1976 - 1980
- 1981 - 1985
- 1986 - 1990
- 1991 - 1997

Number within project area is a database ID number (see Appendix 3 of the Explanatory Notes)



- PERMIAN
 - PATERSON FORMATION: fluvial or fluvio-glacial sandstones, conglomerates, and siltstones
- PROTEROZOIC
 - Dolerite
 - Faraheedy Group
 - MULGAPPA SANDSTONE: quartz sandstone; with minor shale and limestone
 - KULILE LIMESTONE: stromatolitic limestone, calcarenite, and muscovite; minor sandstone
 - WONGAWOL FORMATION: very fine-grained sandstone, shale, and minor carbonate-rich rocks
 - CHALL FORMATION
 - Princes Range Member: quartz arenite with minor siltstone
 - Windward Member: sandstone, siltstone, and shale; locally glauconitic basal conglomerate
 - WINDIDDA FORMATION: limestone, shale, and chert; stromatolitic in part
 - FREIRE FORMATION: granular iron-formation, hematitic shale, chert, and siltstone
 - YELMA FORMATION: sandstone and shale; minor chert, and stromatolitic carbonate
 - ARCHAIC
 - Granitoid rock
 - Greenstone: basalt, dolerite, ultramafic rock, metamorphosed sedimentary rocks, and felsic volcanic rock
- Geological boundary
- Fault

SYMBOLS

- Minor road
- Track
- Watercourse
- Lake
- Pool, soak, spring bore, well
- Homestead
- Locality
- Mine
- Prospect
- Gold

Edited by N. Tetlow and G. Loan

Cartography by G. Jones

Topography from Australian Surveying and Land Information Group and modified from geological field survey (1986)

This map was compiled and produced using a Geographic Information System (ArcInfo), and the data are available in digital form.

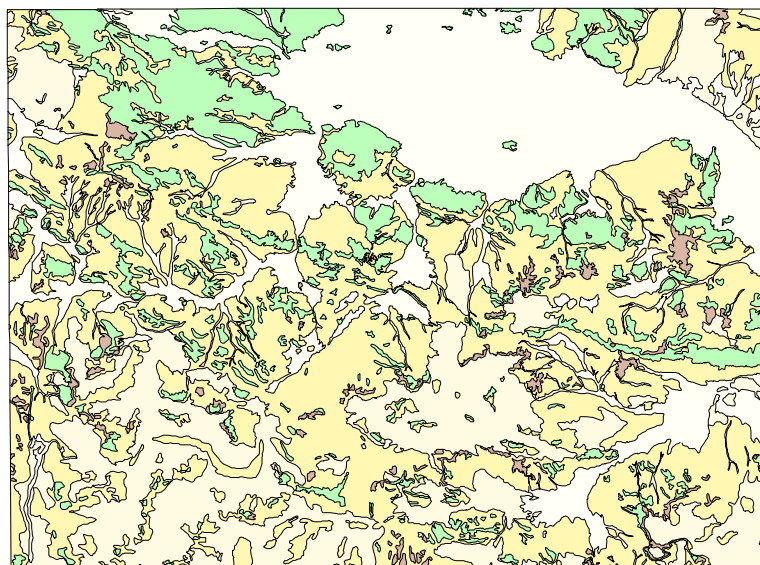
Published by the Geological Survey of Western Australia. Copies of this map, or extracts of the data, are available from the Information Centre, Department of Minerals and Energy, 100 Plain Street, East Perth, W. A., 6004. Phone (08) 9222 3450, Fax (08) 9222 3444

Compiled by S. A. McGuinness 1999

Compiled from open-file mineral exploration reports held by the Geological Survey of Western Australia

The recommended reference for this map is: McGuinness, S. A., 2000. Company projects with surface geochemistry data in open-file reports (at April 1999). In: Geological mapping of the Kingston 1:250 000 sheet by K. J. Pyle, P. A. Morris, and S. A. McGuinness. Western Australia Geological Survey, 1:250 000 Regolith Geochemistry Series Explanatory Notes, Plate 3

GENERALIZED REGOLITH



- Residual
- Exposed
- Colluvial (includes distal sheetwash)
- Alluvial, floodplain, and lacustrine
- Sandplain

SCALE 1:1 500 000

SCALE 1:250 000

UNIVERSAL TRANSVERSE MERCATOR PROJECTION

HORIZONTAL DATUM: GEOCENTRIC DATUM OF AUSTRALIA 1994

VERTICAL DATUM: AUSTRALIAN HEIGHT DATUM

Grid lines indicate 20 000 metre interval of the Map Grid Australia, Zone 51

The Map Grid Australia (MGA) is based on the Geocentric Datum of Australia 1994 (GDA94) GDA94 positions are compatible within one metre of the datum WGS84 positions

GDA



SHEET INDEX

WARRIOR SG 51-5	STANLEY SG 51-6	HERBERT SG 51-7
WILUNA SG 51-8	KINGSTON SG 51-10	ROBERT SG 51-11
RIR RAMEL SG 51-12	QUENTON SG 51-14	THORNBELL SG 51-15

INDEX TO 1:100 000 MAP SHEETS

WONGAWOL 3546	WINDIDDA 3548	CARNEGIE 3548
YELMA 3544	COLLAPABIE 3544	VON TREUER 3544



DEPARTMENT OF MINERALS
AND ENERGY
L. G. RANFORD, DIRECTOR GENERAL



GOVERNMENT OF WESTERN AUSTRALIA
HON. NORMAN MCCOY, M.L.C.
MINISTER FOR MINES



GEOLOGICAL SURVEY OF
WESTERN AUSTRALIA
DAVID BLIGHT, DIRECTOR

COMPANY PROJECTS WITH SURFACE GEOCHEMISTRY DATA IN OPEN-FILE REPORTS (at April 1999)

REGOLITH GEOCHEMISTRY SERIES

KINGSTON

SHEET SG 51-10

FIRST EDITION 2000

© Western Australia 2000

WARNING: Inks are water soluble and will fade with prolonged exposure to light