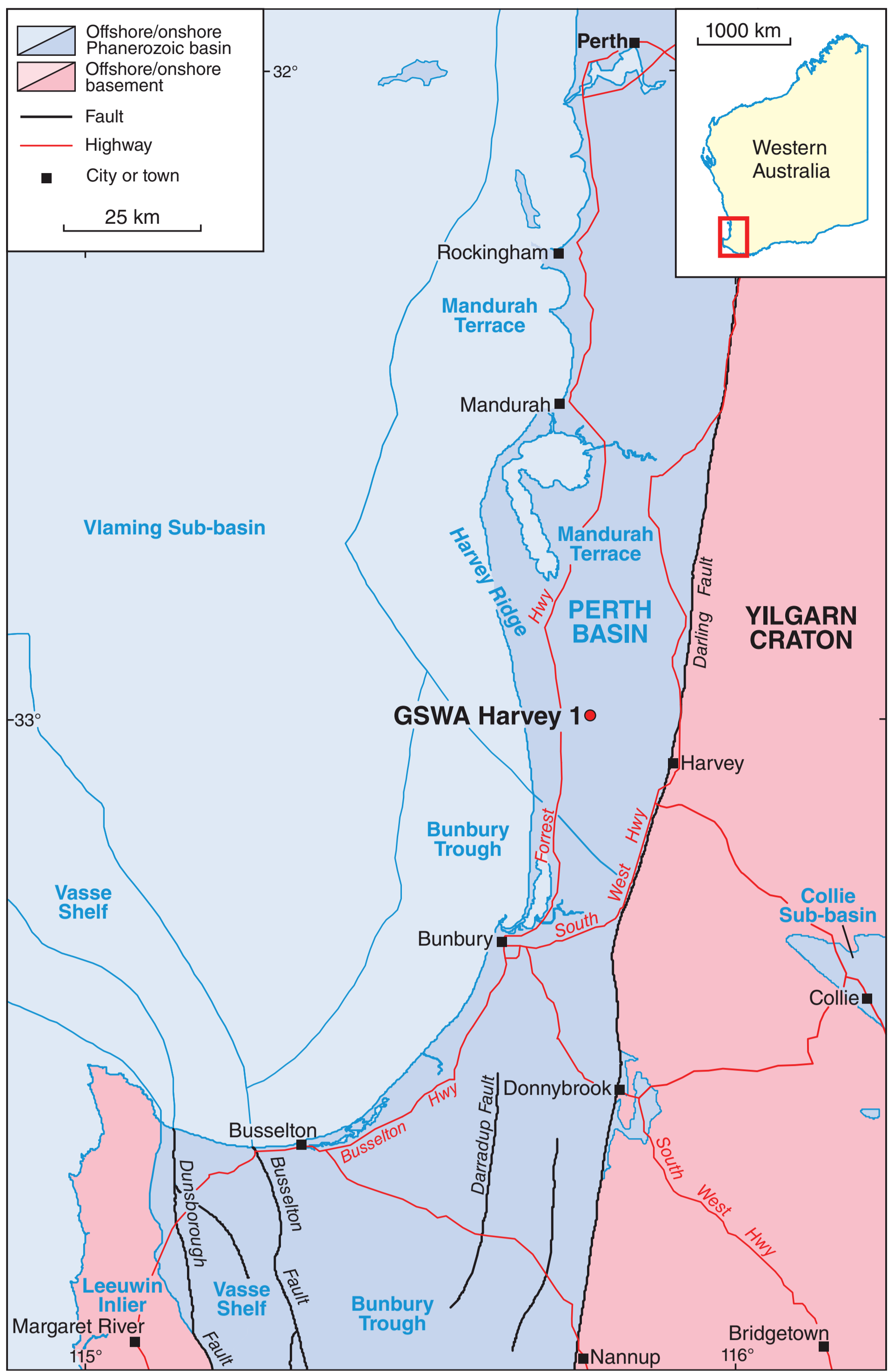


HARVEY 1

Digital core atlas



GSWA Harvey 1 is a stratigraphic well drilled in early 2012 in the southern Perth Basin, located on a structural feature known as Harvey Ridge (Fig. 1). The well was completed as part of the South West Hub Carbon Capture and Storage (CCS) Project, a project jointly funded by the Australian Commonwealth Government CCS Flagship Program through the Department of Industry, Innovation and Science.

A coring program recovered six 100 mm (4") diameter cores over four intervals for a total of 217 m of recovered core (Fig. 2). The lithology of the core intervals was logged in detail and 90 horizontal and vertical plugs were obtained for various analyses. A core atlas has been compiled to provide a detailed view and location of the results of the analyses on the core.

This core atlas is presented in an electronic flipbook design with interactive links to provide the viewer with the ability to view the results of multiple datasets in one convenient and user-friendly location. Each tray of core was photographed by the HyLogger. The core images (as shown by the examples below) are accompanied by links to the various analyses that were conducted on each core tray.

The Harvey 1 digital core atlas is available to download from WAPIMS: <<https://wapims.dmp.wa.gov.au/wapims>>

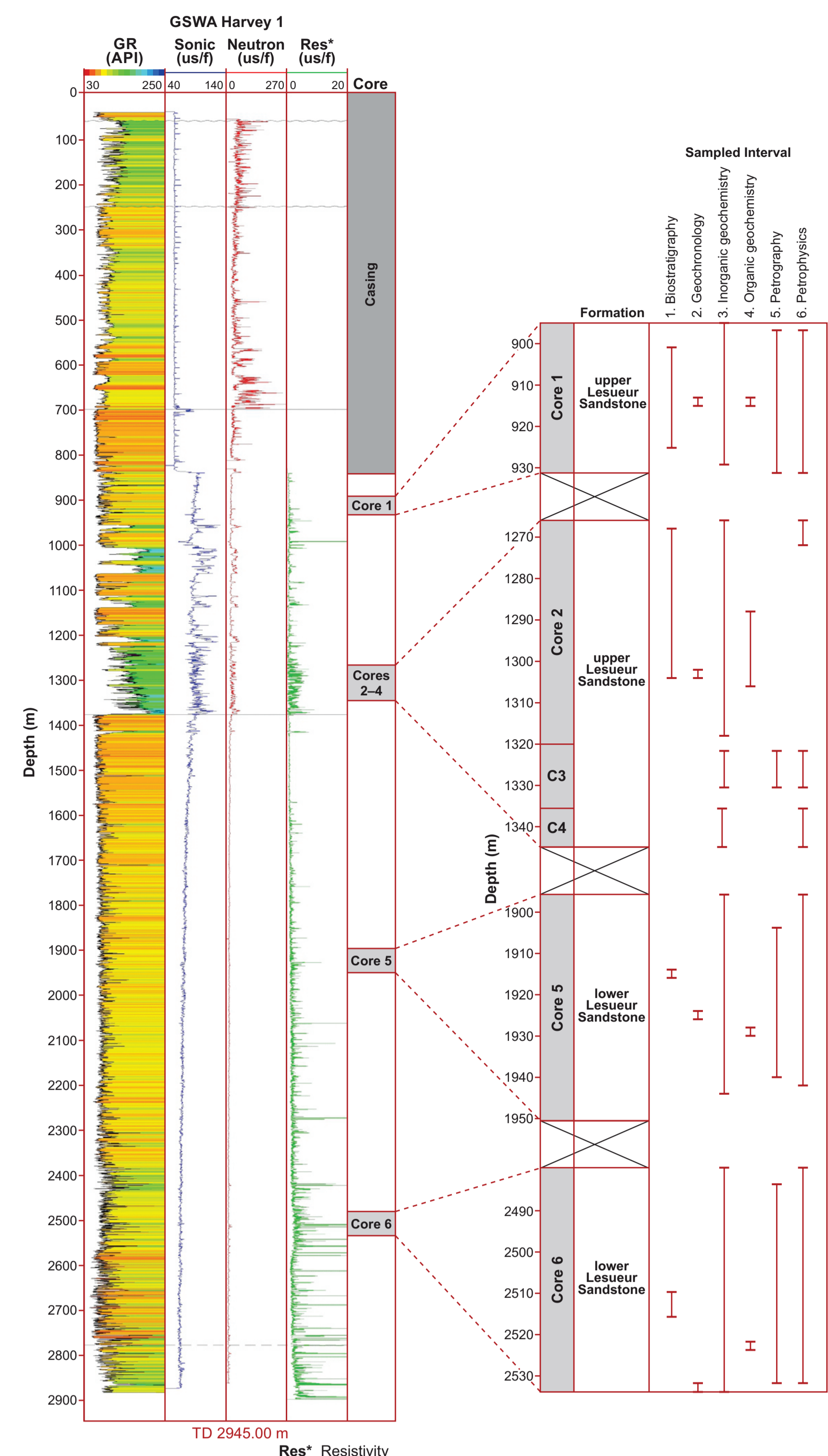
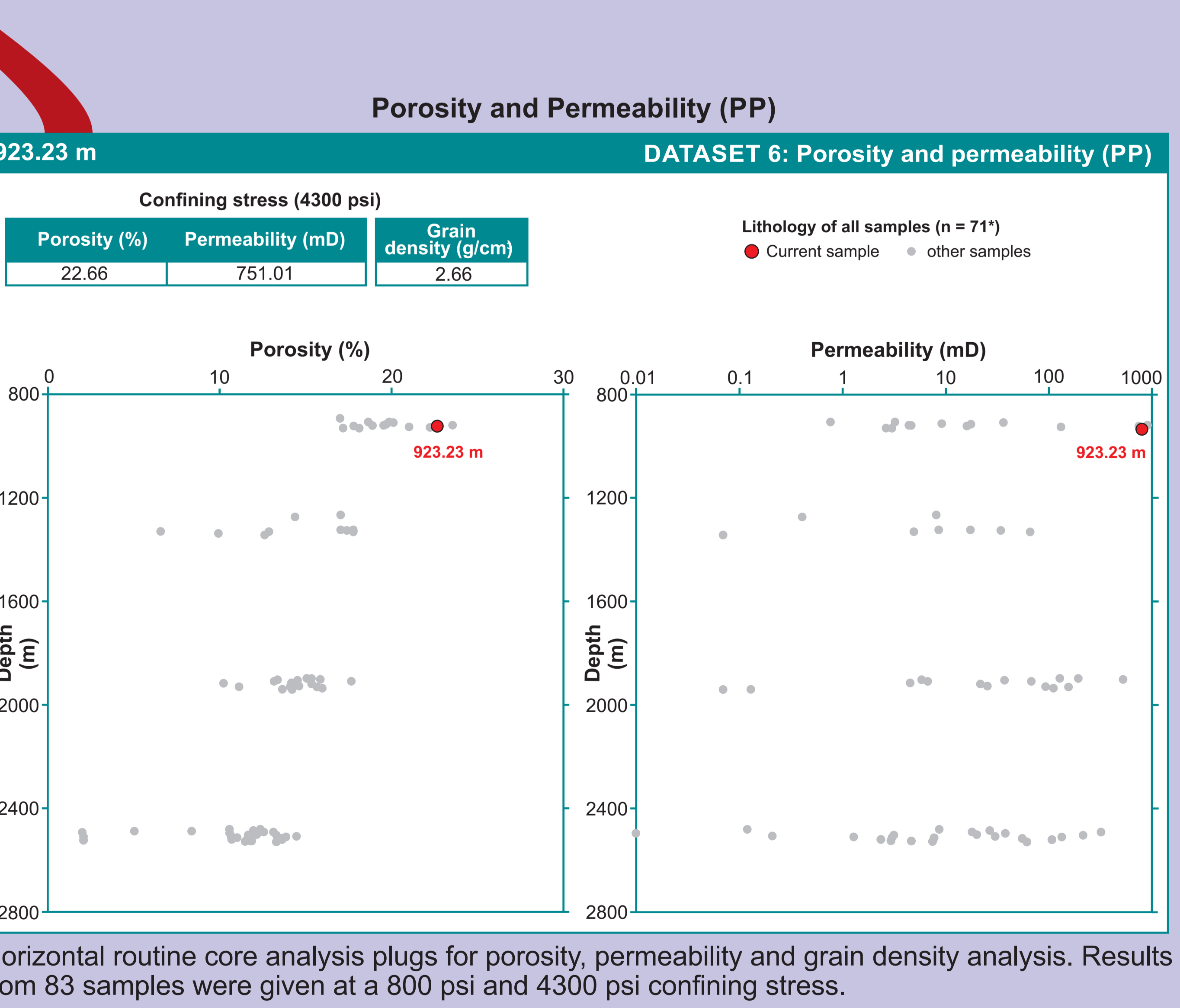
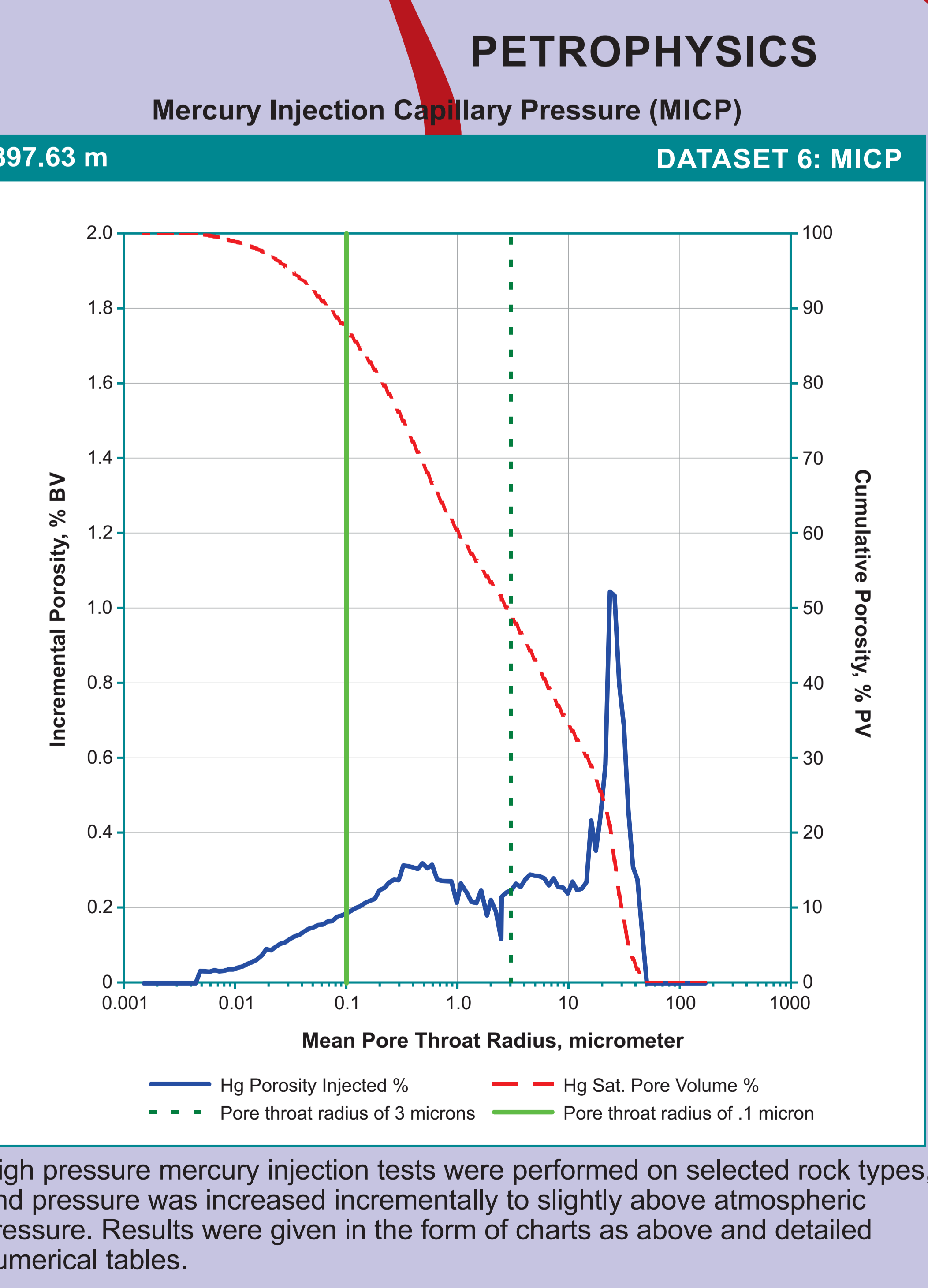
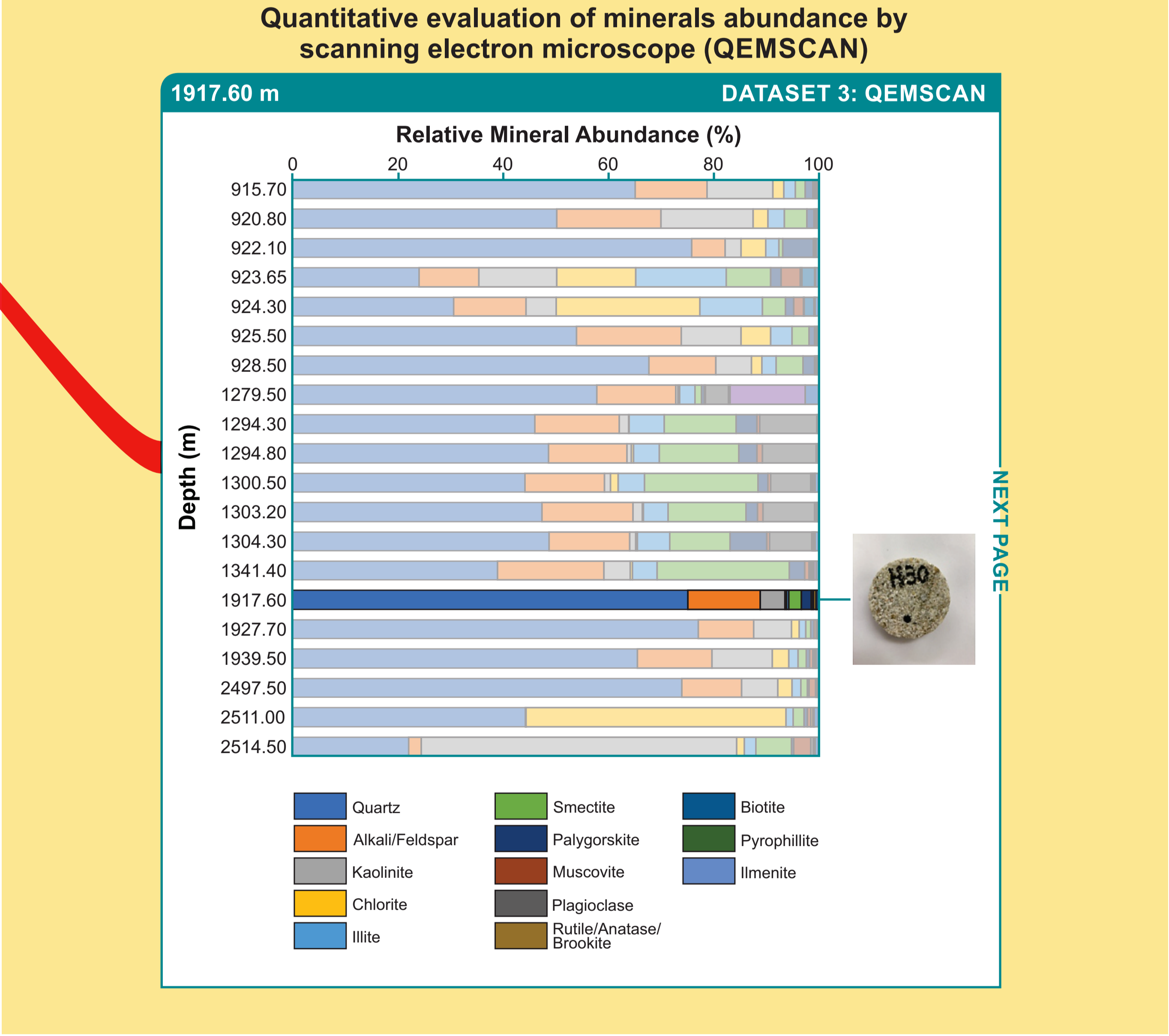
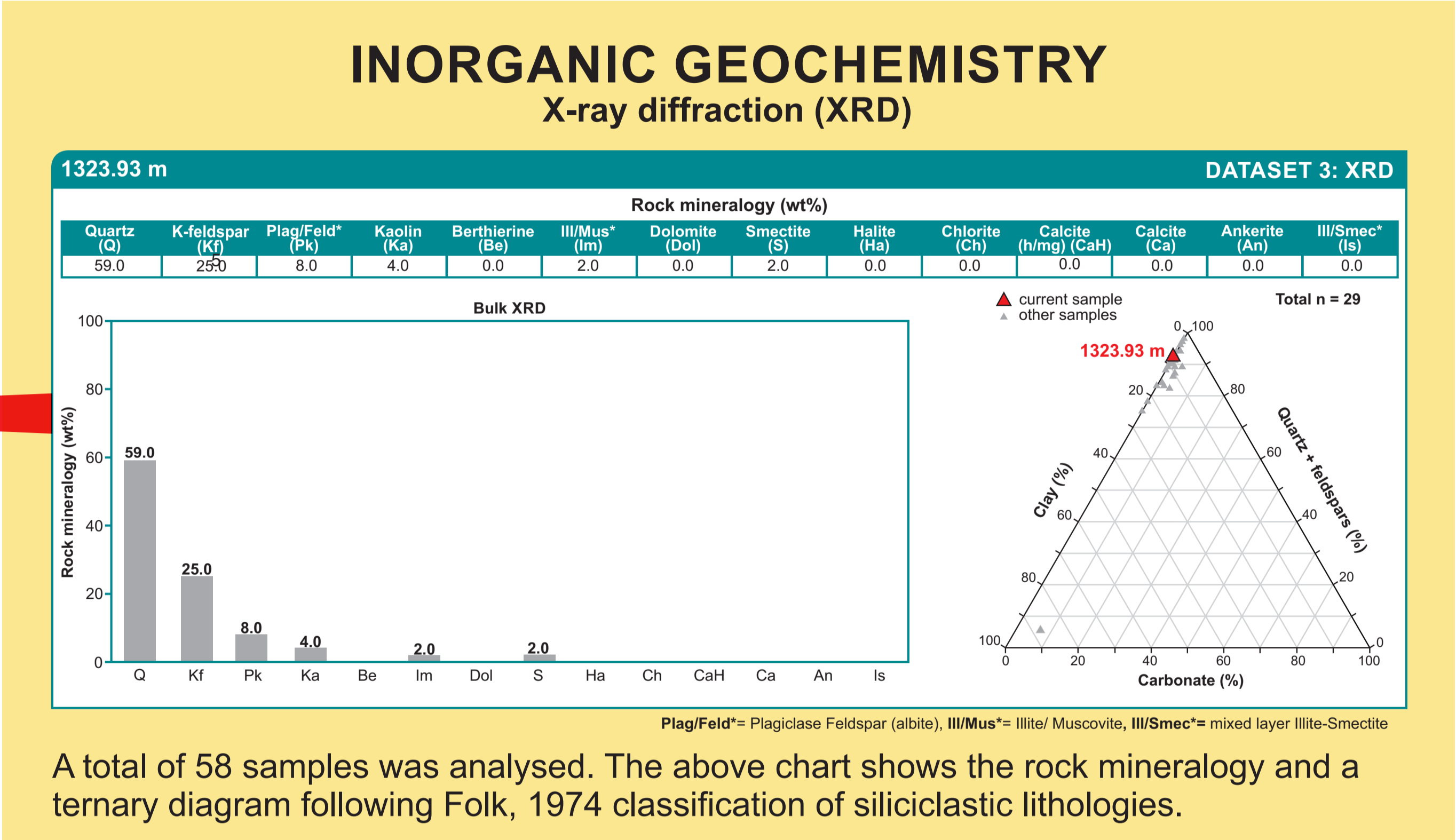
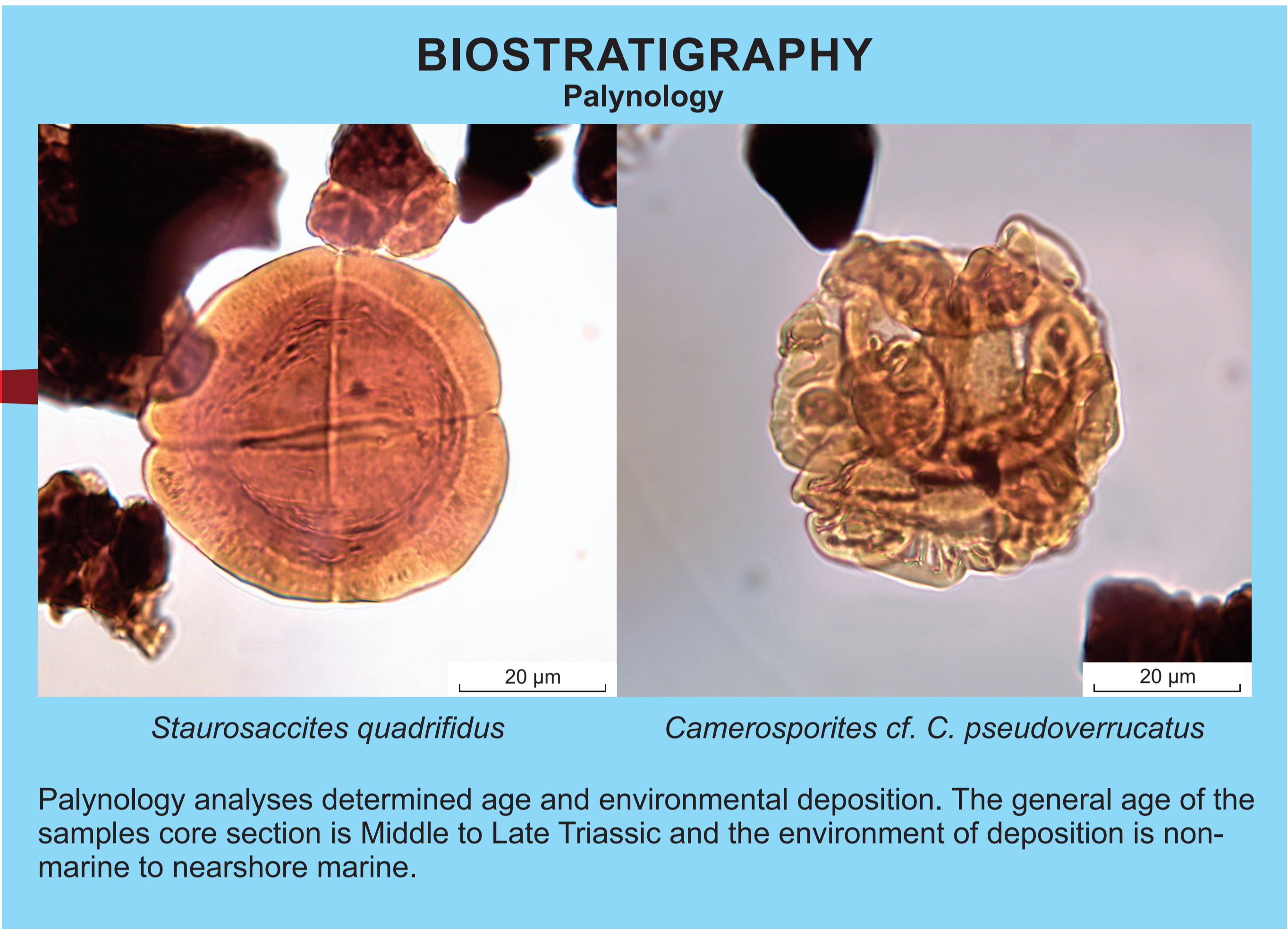
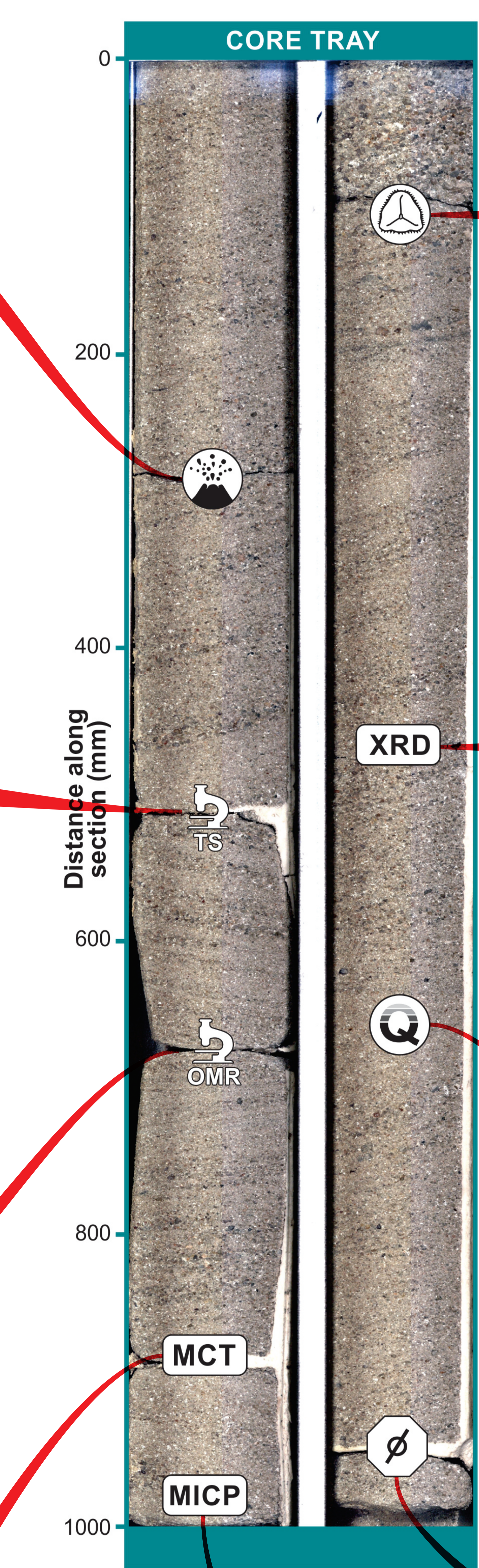
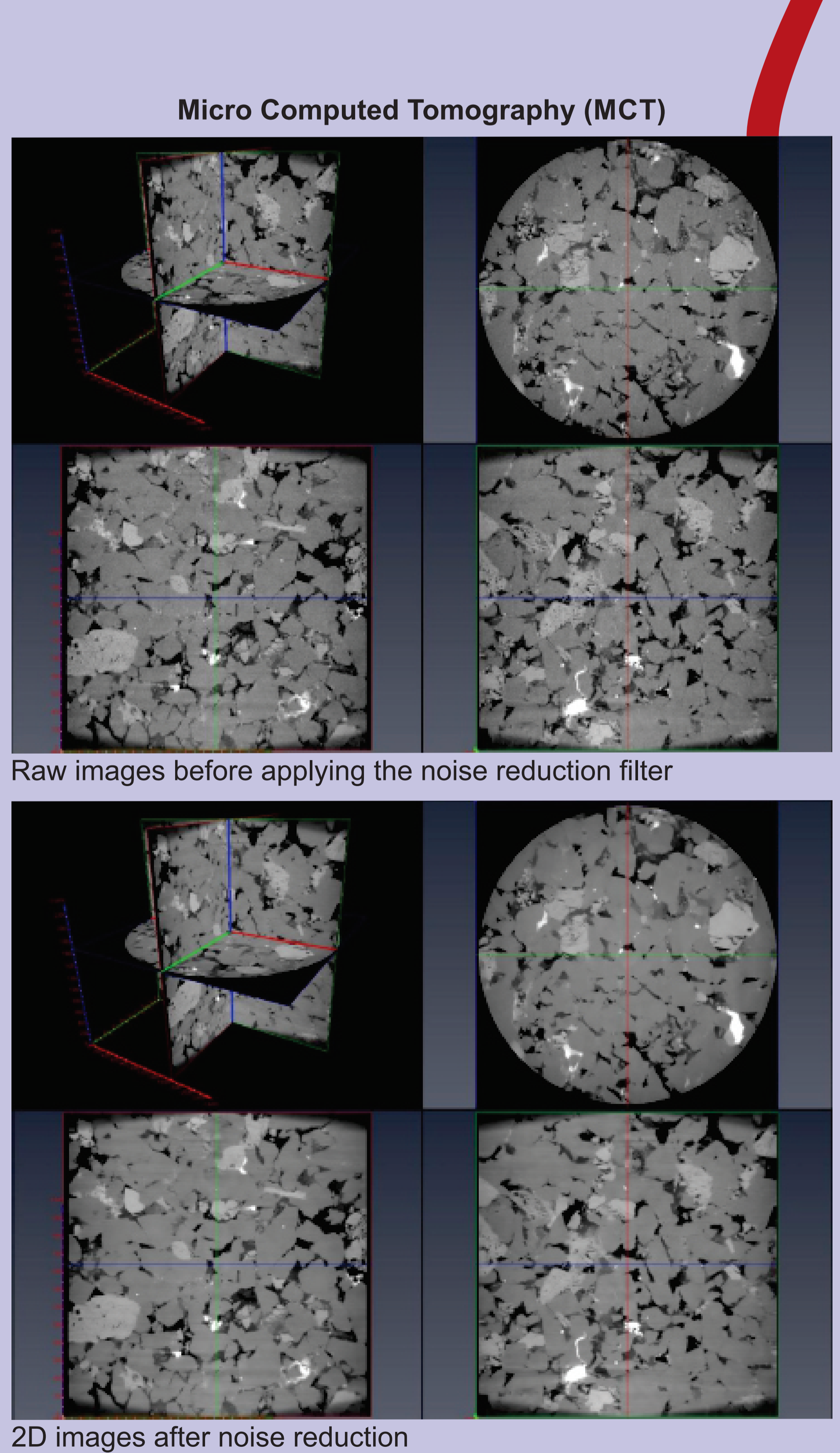
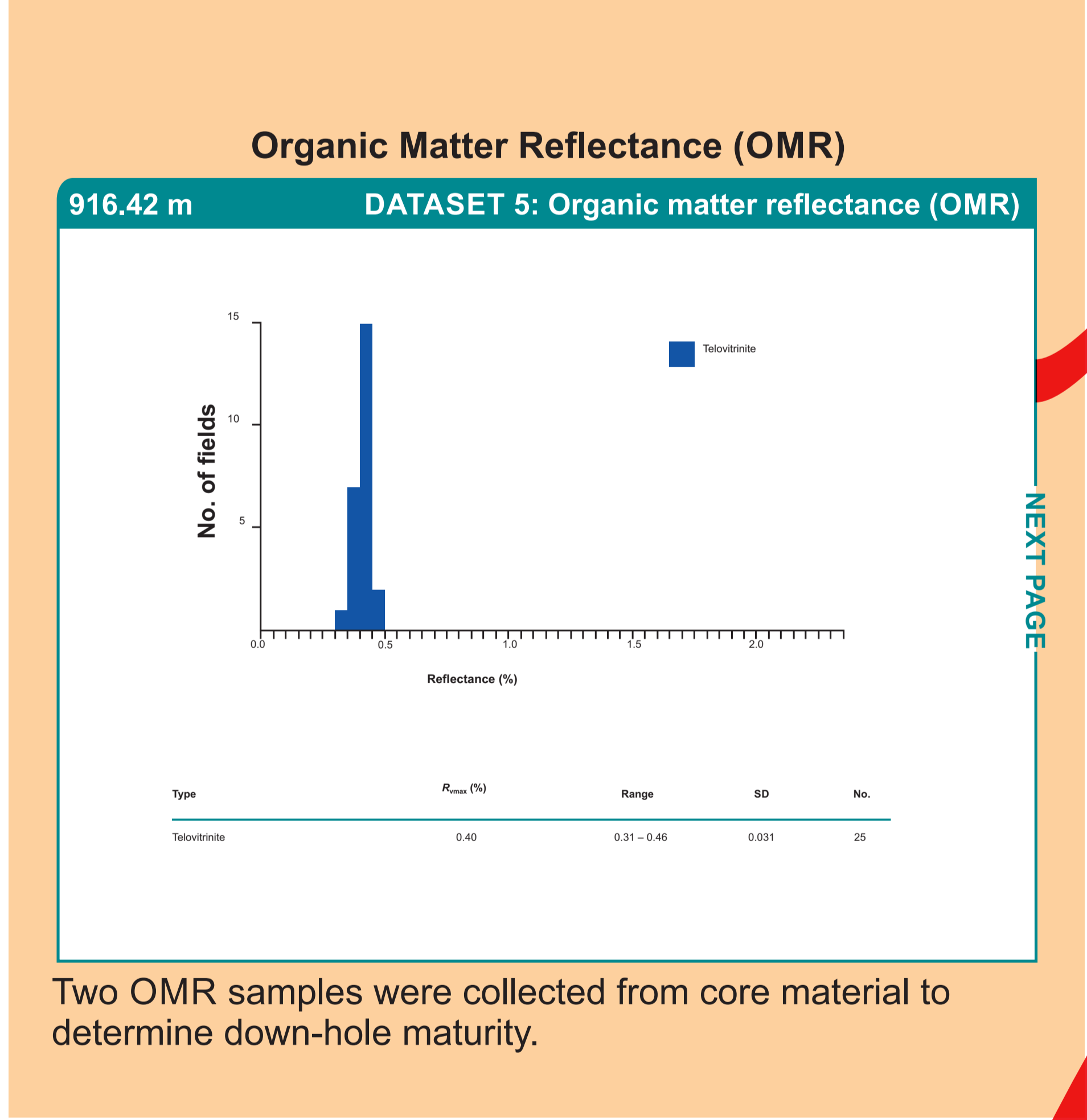
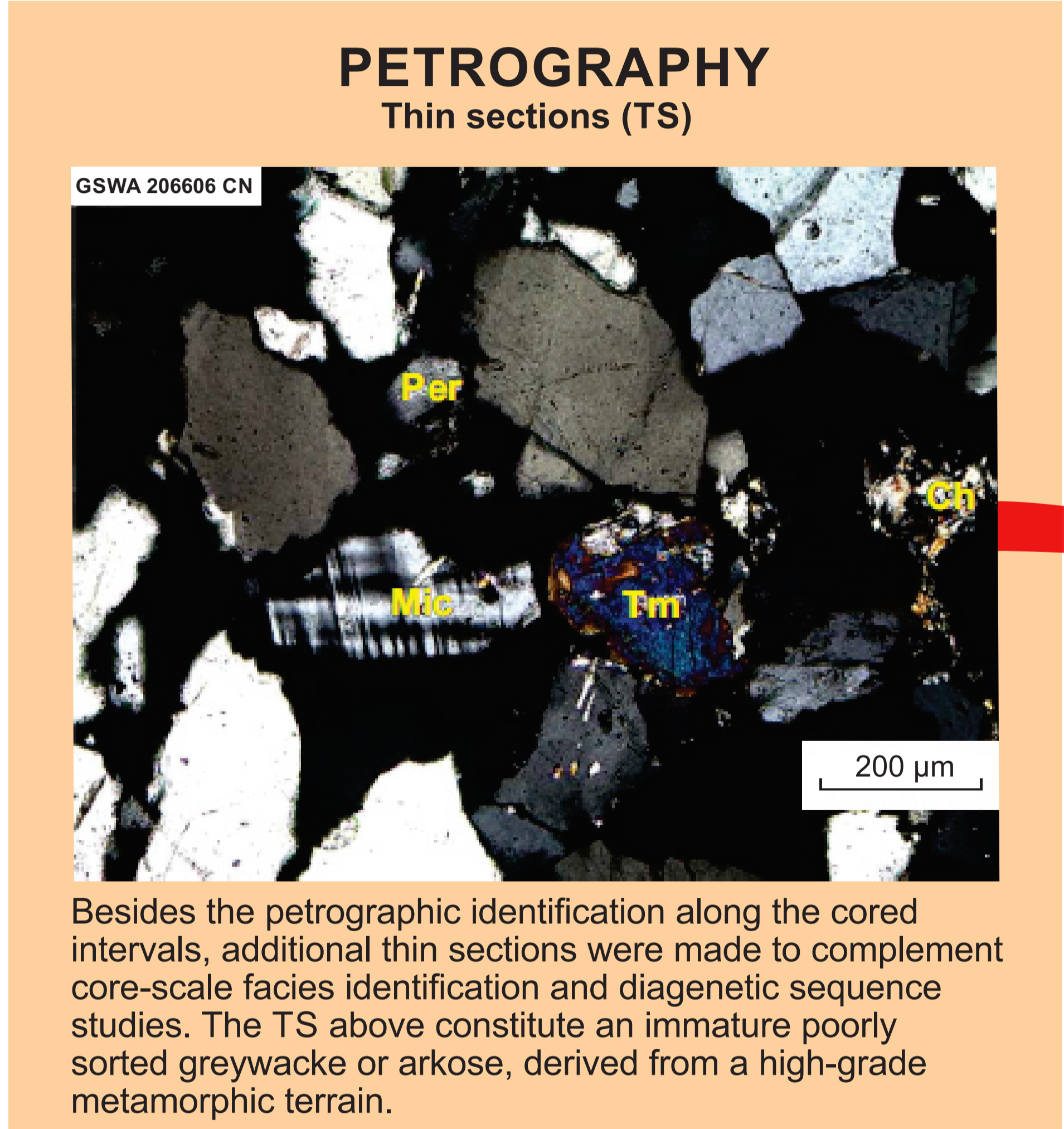
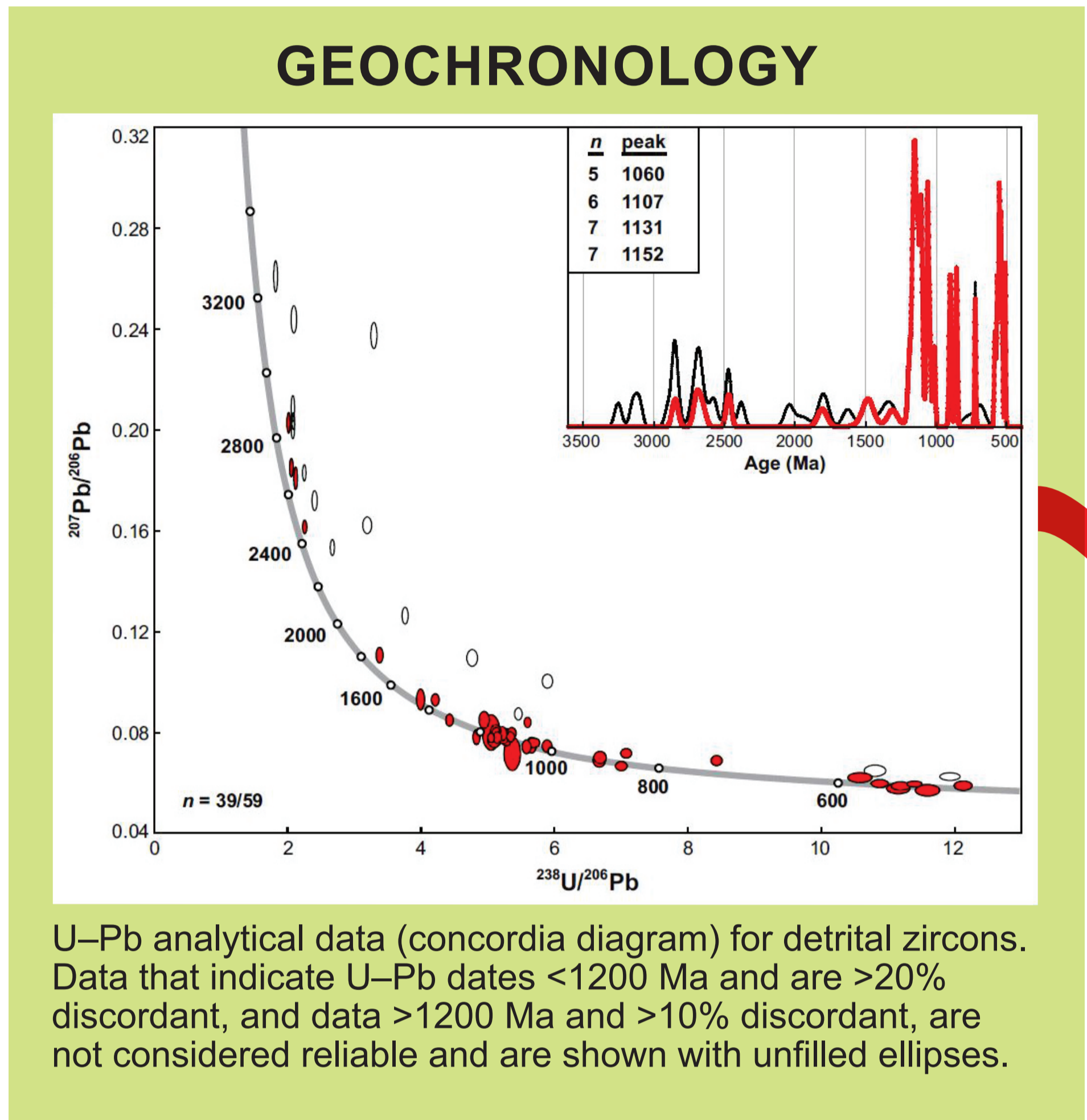


Figure 2. Well schematic showing main wireline logs, core intervals and datasets included in the core atlas



For more information, contact:
Deidre Brooks (deidre.brooks@dmirs.wa.gov.au)