

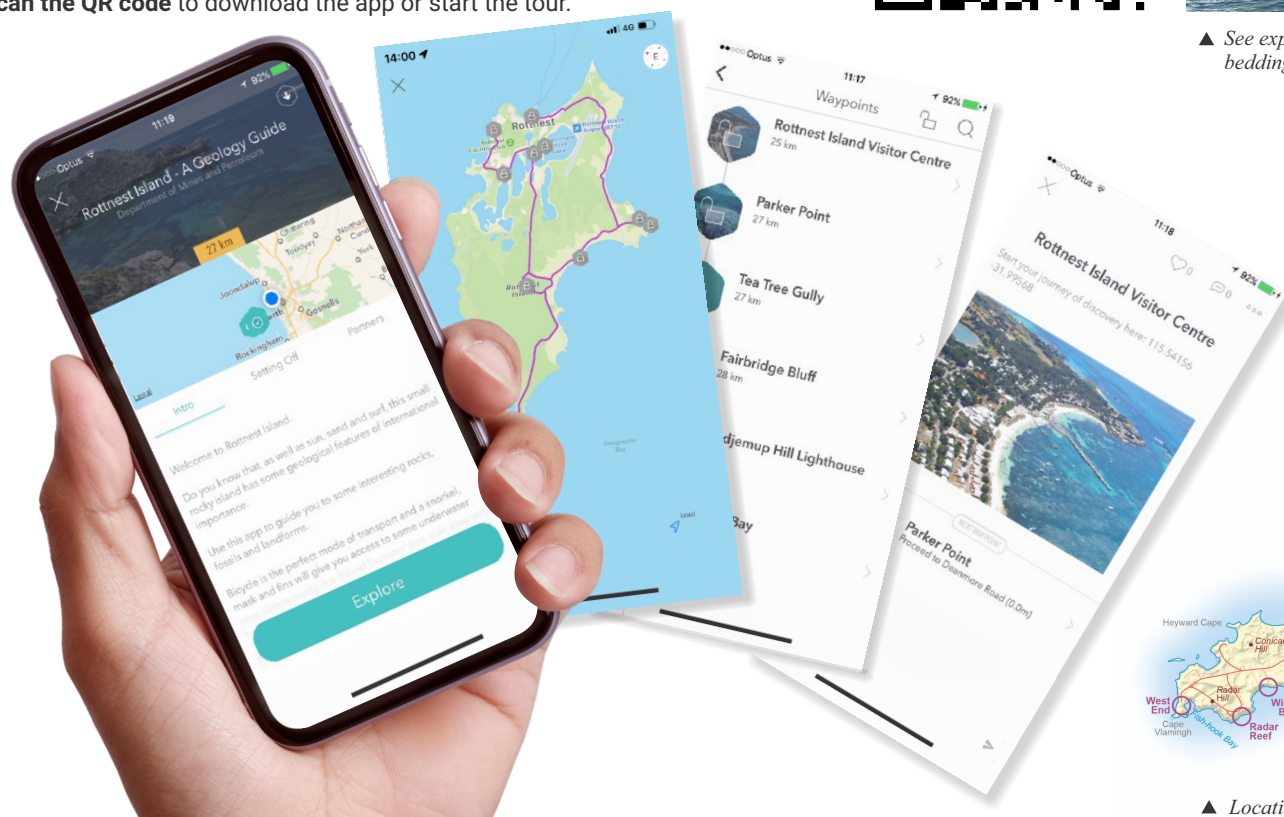
Rottnest Island – A Geology Guide – App

Wadjemup / Rottnest Island is the perfect place for uncovering clues to the recent geological past while criss-crossing the accessible and starkly memorable terrain. Take a half-day bike ride around the island, or hop on and off the tour bus, to visit as many of the 12 waypoints in the **Everythere** app tour as you feel like exploring.

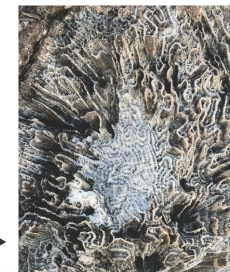
Notes and photos at each location interpret the features in terms of changing sea level and climate over the past ~150 000 years. Relict shorelines around the lakes, a coral reef at Fairbridge Bluff, limesand dunes at South Point – each location adds to the story of how Rottnest Island was formed, and was then isolated from the mainland.



Scan the QR code to download the app or start the tour.



▲ See exposed Tamala Limestone cross-bedding at South Point.



See corals in a exposed reef at Fairbridge Bluff ▶



▲ Location map of Rottnest Island, Western Australia

Rottnest Island – A Geology Guide – App

Enquiries to publications@dmirs.wa.gov.au

Scan the QR code to download the Everythere app



Government of Western Australia
Department of Mines, Industry Regulation
and Safety

Geological Survey of
Western Australia

