

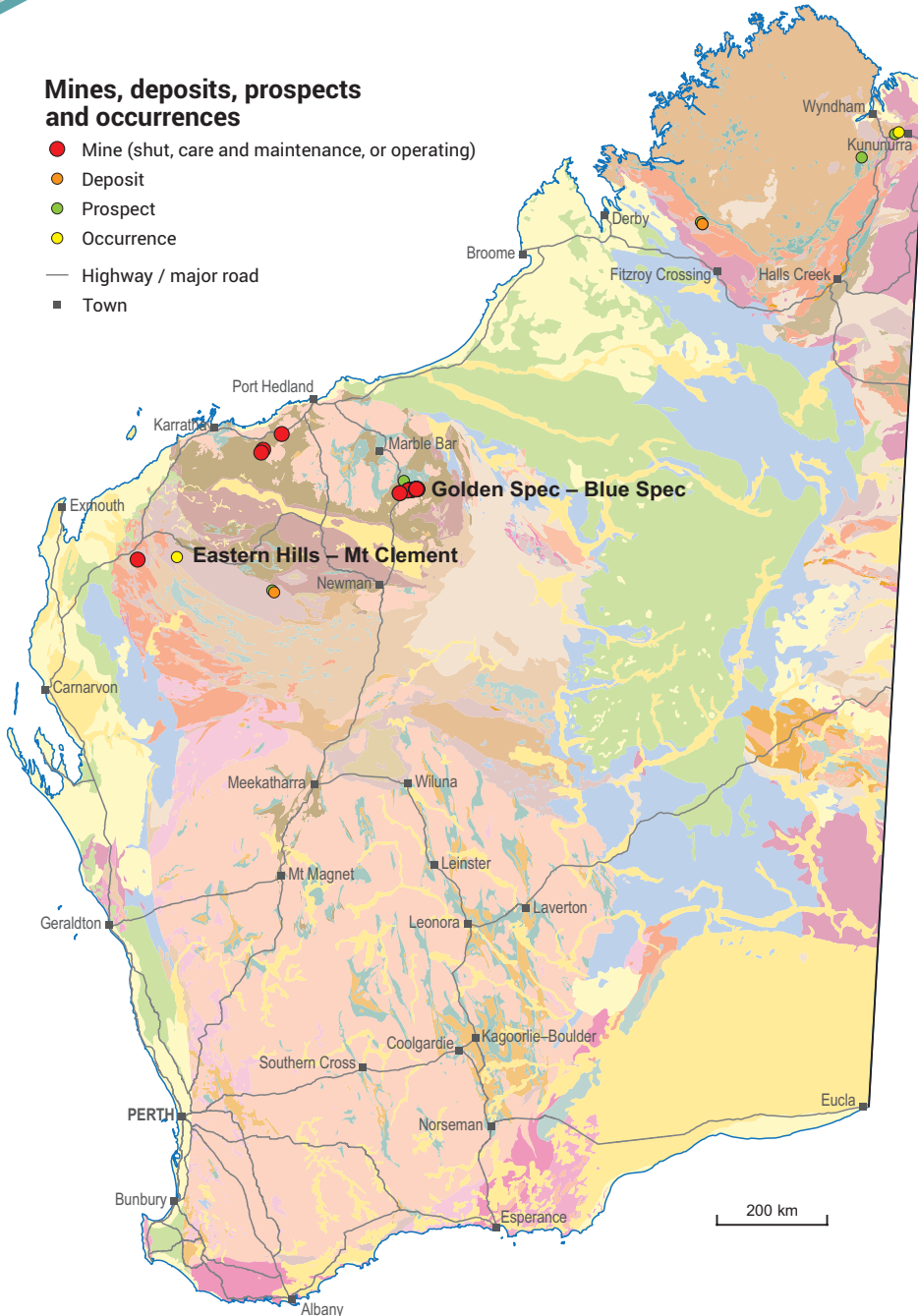
ANTIMONY

INVESTMENT OPPORTUNITIES

WORLD-CLASS RESOURCE PROVINCE | SECURE INVESTMENT LOCATION
WORLD-LEADING GEOSCIENTIFIC DATA | GLOBAL MINING SERVICES INDUSTRY

Mines, deposits, prospects and occurrences

- Mine (shut, care and maintenance, or operating)
- Deposit
- Prospect
- Occurrence
- Highway / major road
- Town



Antimony resources in Western Australia are associated with two gold projects

- Resources from the Gold Spec – Blue Spec and Eastern Hills – Mt Clement Gold Projects are over 2 Mt
- Over 5 kt of antimony has been produced historically from nine sites in the Pilbara region
- Large regions of the State are prospective including Pilbara Craton, Kimberley Basin and Ashburton Basin
- The common mineral form is stibnite which is associated with vein and hydrothermal alteration in sedimentary packages
- Also associated with lead, gold and silver mineralization, and is considered to be both a critical mineral and a battery metal
- A mineral resource estimate for the Eastern Hills – Mt Clement Gold Project of 1.3 Mt at 1.73% Sb was previously estimated in 2013. Northern Star now owns the Mt Clement Gold Project and is focused on gold



Antimony resources ranked by contained Sb (kt)

Resources estimated according to JORC 2012

Project	Status	Owner	Commodity	Resources (Mt)	Av. grade Sb (%)	Contained Sb (kt)	Resource date
Gold Spec – Blue Spec	Care and maintenance	Novo Resources	Au–Sb	0.8	0.97	7437	01/10/2013

Resource estimates have been rounded

Properties and uses

- Generally occurs as the mineral stibnite
- Uses include as an alloy with lead in batteries, ceramics, glass, plastics and is used to create fire retardant materials such as fire extinguishers
- Is considered a critical mineral by many countries



Antimony specimen
(Source: Rob Lavinsky, iRocks.com – CC-BY-SA-3.0)

For more information



Geological Survey of
Western Australia

www.dmirs.wa.gov.au/gswa

MINEDEX

www.dmirs.wa.gov.au/minedex

GeoVIEW.WA

www.dmirs.wa.gov.au/geoview

Contact us

Sarah Sargent

Geological Survey and Resource Strategy Division

Email: minerals.investors@dmirs.wa.gov.au

Tel: +61 8 9222 3890



Government of **Western Australia**
Department of **Mines, Industry Regulation and Safety**

December 2021

Geological Survey of
Western Australia

