

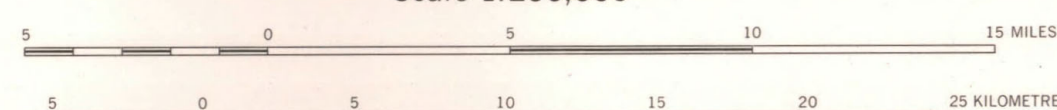
Published by the Bureau of Mineral Resources, Geology and Geophysics, Department of National Development, issued under the authority of the Hon. David Fairbairn, Minister for National Development. Base map compiled by the Division of National Mapping, Department of National Development. Aerial photography by the Department of Lands and Surveys, W.A.; complete vertical coverage of 1:40,000 scale. Transverse Mercator Projection.

Geology, 1960, by A. T. Wells, D. J. Forman and L. C. Ranford. Compiled, 1966, by A. T. Wells. Cartography by Geological Branch, B.M.R. Drawn by Austral Cartographic Service, Canberra, A.C.T. Printed by Mercury Press Pty. Ltd., Hobart.

## INDEX TO ADJOINING SHEETS

Sheet	Scale	Sheet	Scale	Sheet	Scale
MACDONALD SF 52-14	1:250,000	MACDONALD SF 52-15	1:250,000	MACDONALD SF 52-16	1:250,000
MACDONALD SF 52-13	1:250,000	MACDONALD SF 52-14	1:250,000	MACDONALD SF 52-15	1:250,000
MACDONALD SF 52-12	1:250,000	MACDONALD SF 52-13	1:250,000	MACDONALD SF 52-14	1:250,000
MACDONALD SF 52-11	1:250,000	MACDONALD SF 52-12	1:250,000	MACDONALD SF 52-13	1:250,000
MACDONALD SF 52-10	1:250,000	MACDONALD SF 52-11	1:250,000	MACDONALD SF 52-12	1:250,000
MACDONALD SF 52-09	1:250,000	MACDONALD SF 52-10	1:250,000	MACDONALD SF 52-11	1:250,000
MACDONALD SF 52-08	1:250,000	MACDONALD SF 52-09	1:250,000	MACDONALD SF 52-10	1:250,000
MACDONALD SF 52-07	1:250,000	MACDONALD SF 52-08	1:250,000	MACDONALD SF 52-09	1:250,000
MACDONALD SF 52-06	1:250,000	MACDONALD SF 52-07	1:250,000	MACDONALD SF 52-08	1:250,000
MACDONALD SF 52-05	1:250,000	MACDONALD SF 52-06	1:250,000	MACDONALD SF 52-07	1:250,000
MACDONALD SF 52-04	1:250,000	MACDONALD SF 52-05	1:250,000	MACDONALD SF 52-06	1:250,000
MACDONALD SF 52-03	1:250,000	MACDONALD SF 52-04	1:250,000	MACDONALD SF 52-05	1:250,000
MACDONALD SF 52-02	1:250,000	MACDONALD SF 52-03	1:250,000	MACDONALD SF 52-04	1:250,000
MACDONALD SF 52-01	1:250,000	MACDONALD SF 52-02	1:250,000	MACDONALD SF 52-03	1:250,000
MACDONALD SF 52-00	1:250,000	MACDONALD SF 52-01	1:250,000	MACDONALD SF 52-02	1:250,000

Scale 1:250,000

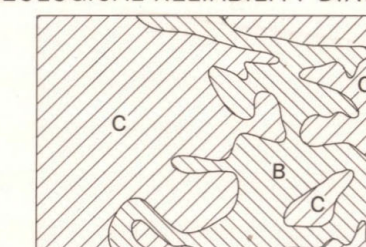


CROWN COPYRIGHT RESERVED

GREY NUMBERED LINES INDICATE THE 20,000 YARD TRANSVERSE MERCATOR GRID, ZONES 3 AND 4 (AUSTRALIA SERIES)

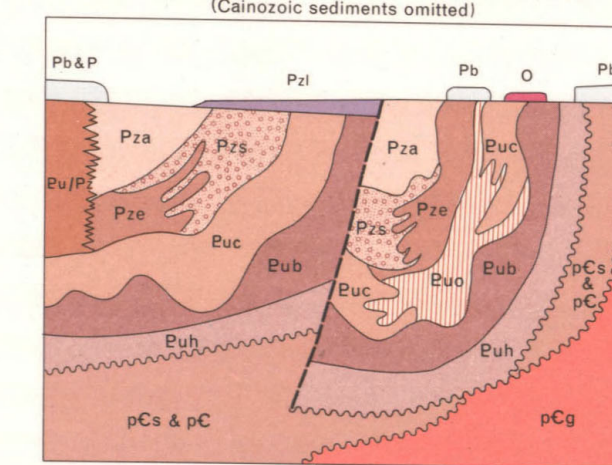
Section  
Cainozoic sediments omitted from section  
Scale 1/4" = 1 mile

## GEOLOGICAL RELIABILITY DIAGRAM



B Reconnaissance: Traverses and air-photo interpretation  
C Sketchy: Air-photo interpretation

## DIAGRAMMATIC RELATIONSHIP OF ROCK UNITS



FIRST EDITION 1968

MACDONALD  
SHEET SF 52-14

Copies of this map may be obtained from the Bureau of Mineral Resources, Geology and Geophysics, Canberra, A.C.T., or the Geological Survey of Western Australia, Perth.