

Western Australia

# Atlas of Mineral Deposits and Petroleum Fields



1999



DEPARTMENT OF  
MINERALS AND ENERGY  
WESTERN AUSTRALIA

*"Our Resources • Our People • Our Future"*









GEOLOGICAL SURVEY OF WESTERN AUSTRALIA

GEOLOGICAL SURVEY  
& GENERAL LIBRARY  
28 AUG 2000  
DEPT. OF  
MINERALS & ENERGY

# **WESTERN AUSTRALIA ATLAS OF MINERAL DEPOSITS AND PETROLEUM FIELDS 1999**

**Perth 1999**

**MINISTER FOR MINES**  
**The Hon. Norman Moore, MLC**

**DIRECTOR GENERAL**  
**L. C. Ranford**

**DIRECTOR, GEOLOGICAL SURVEY OF WESTERN AUSTRALIA**  
**David Blight**

**Edited by F. Apidopoulos and G. Loan**

**Cartography by D. Wallace and M. Prause**

**Geology generalized from MYERS, J. S., and HOCKING, R. M., 1998, Geological map of Western Australia, 1:2 500 000 (13th edition): Western Australia Geological Survey.**

**The data used to compile this atlas are available in digital form**

## **REFERENCE**

**The recommended reference for this publication is:**

**GEOLOGICAL SURVEY OF WESTERN AUSTRALIA, 1999, Western Australia atlas of mineral deposits and petroleum fields 1999: Western Australia Geological Survey, 33p.**

**Copies available from:**

**Information Centre  
Department of Minerals and Energy  
100 Plain Street  
EAST PERTH, WESTERN AUSTRALIA 6004  
Telephone: (08) 9333 3459 Facsimile: (08) 9222 3444  
[www.dme.wa.gov.au](http://www.dme.wa.gov.au)**

**Further information:**

**MINEDEX: (08) 9222 3328  
WAMEX: (08) 9222 3509  
WAPEX: (08) 9222 3214  
Petroleum Operations Division: (08) 9222 3622**



# Western Australia atlas of mineral deposits and petroleum fields 1999

This ATLAS has been produced to show the location of Western Australia's mineral and petroleum resource projects and deposits, set against a background of simplified geology and topographic information. The publication is intended as an update of the 1995 edition of the ATLAS and supersedes the Department's November 1993 publication titled *Western Australia: principal mining and petroleum projects*.

This publication draws together data from a number of sources. The 'minerals' information comes from the Department's 'Mines and Mineral Deposits' database (MINEDEX) that has, since 1984, recorded the sites of all mines, process plants, and deposits with defined resources. Over 3100 such sites, the location of which are publicly available, are plotted in the ATLAS. Some 1100 sites have been named, with priority given to operating mines. Because of the small scale of the maps used in this publication, a number of the closely spaced pits and deposits have been consolidated into single entities and given project names. Extractive industry quarries for construction materials (rock, aggregate, gravel, and sand) and sites with confidential location information have been omitted, but sites of industrial minerals are included.

The index at the back of the ATLAS categorizes sites by their stage of development, with 'o' for operating sites and those currently being developed for commercial production, 'u' for undeveloped deposits and projects, and 'c' representing closed operations and those currently under care and maintenance as at late 1998. On the map,

named operating sites and projects appear in black, whereas closed or undeveloped ones are shown in grey. Significant commercial ownership (greater than 10%) of named projects and sites as at late 1998 is listed in the index.

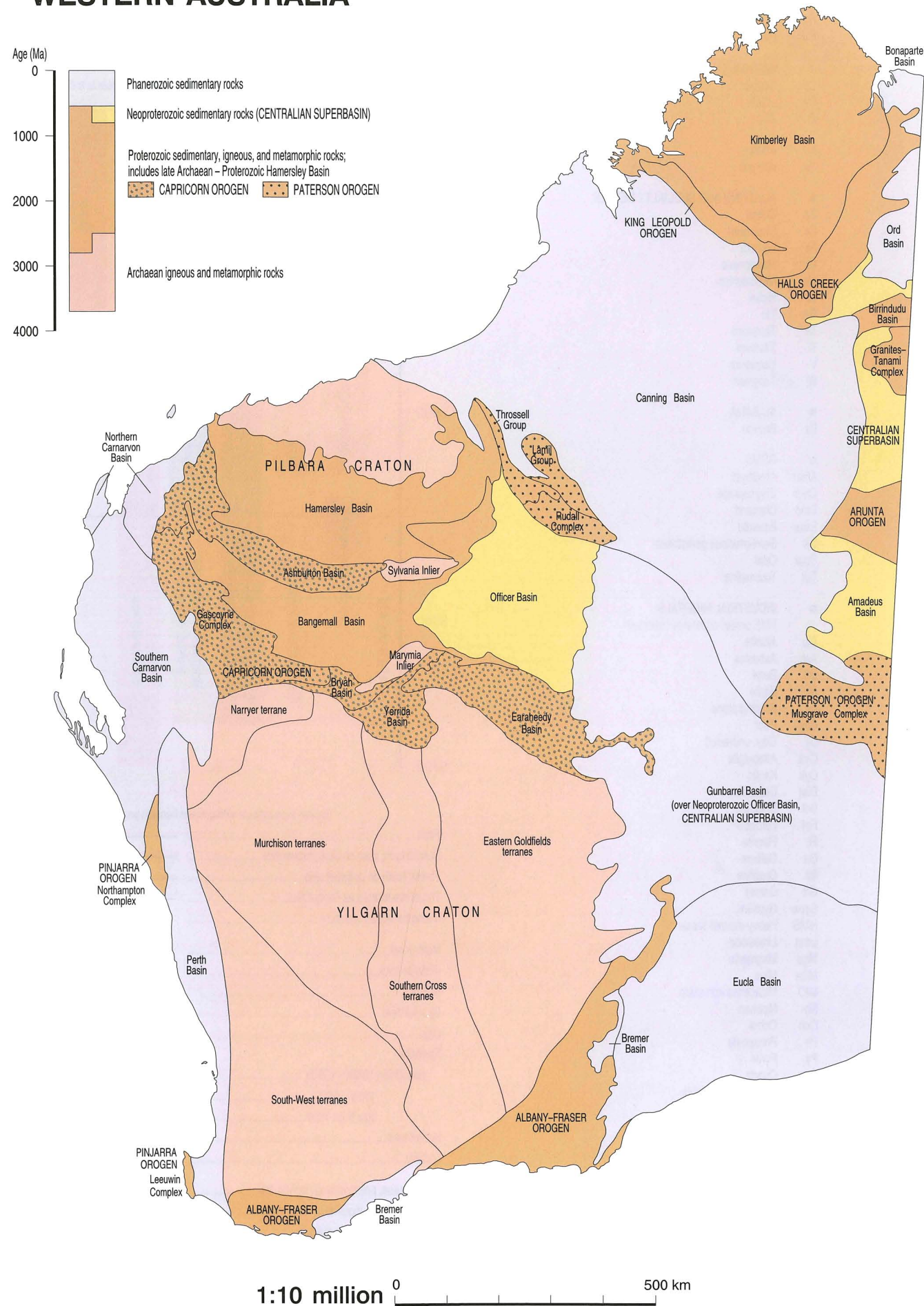
Mineral commodities, ownership, stage of development, and location for each site have been extracted from the MINEDEX database, which is continually being updated. A digital extract from MINEDEX, updated approximately six monthly, is available in GSWA Record 1996/13. Further enquiries as to the current status of the sites and projects included in this booklet can be made by calling (08) 9222 3328. Information about mineral exploration data can be obtained from the 'Western Australian Mineral Exploration' database (WAMEX).

The 'petroleum' information comes from the Department's 'Western Australian Petroleum Exploration' database (WAPEX). Information is also available from the publication series *Schedule of petroleum wells*. Enquiries regarding petroleum discoveries, reserves, development projects, and production should be addressed to the Petroleum Operations Division.

All maps in this publication have been produced using the Albers Equal Area Projection (Australian Geodetic Datum 1984), with central meridian 121°00'E and standard parallels 17°30' and 13°30'S.



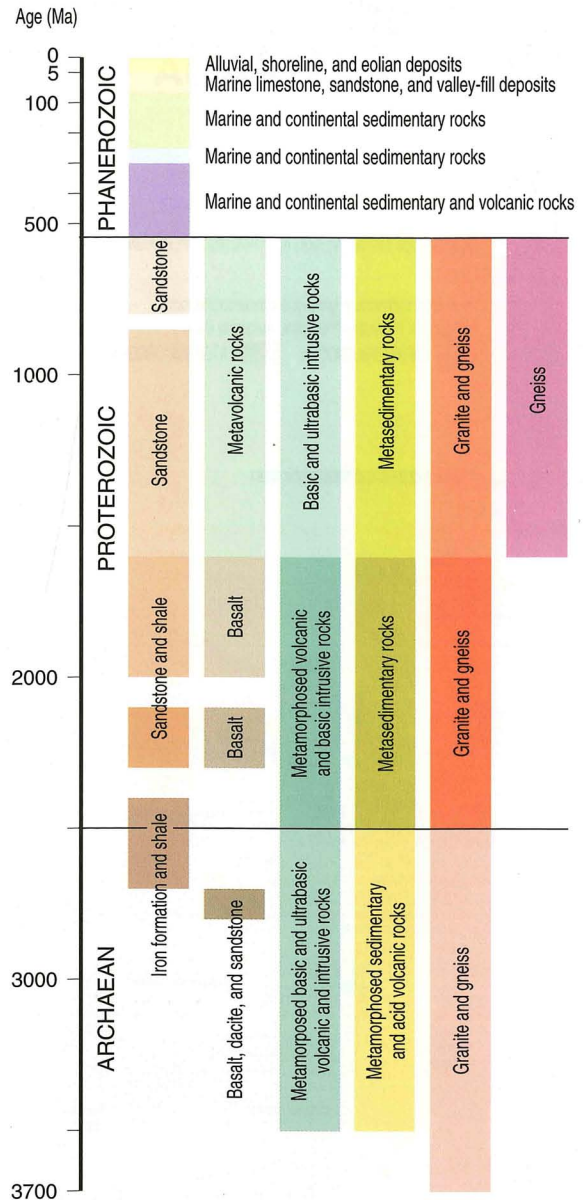
# MAIN GEOLOGICAL UNITS OF WESTERN AUSTRALIA





# ATLAS REFERENCE

○	PRECIOUS METALS
Au	Gold
Ag	Silver
PGE	Platinum-group elements
■	BASE METALS
Cu	Copper
Pb	Lead
Zn	Zinc
◆	IRON
Fe	Iron ore
◆	ALLOYING AND SPECIALTY METALS
Co	Cobalt
Cr	Chromium
Fe	Iron ore
Mn	Manganese
Mo	Molybdenum
Ni	Nickel
Sn	Tin
Ta	Tantalum
Ti	Titanium
V	Vanadium
W	Tungsten
◆	ALUMINA
Bx	Bauxite
★	GEMS
Amet	Amethyst
Chrp	Chrysoprase
Dmd	Diamond
Emer	Emerald
Gs	Semi-precious gemstones
Opal	Opal
Tur	Tourmaline
■	INDUSTRIAL MINERALS
	HMS unless otherwise indicated
Alu	Alunite
Asb	Asbestos
Brl	Beryl
Brt	Barite
Bs	Building stone
Cwp	Peat
Cy	Clay, undivided
Cya	Attapulgit
Cyk	Kaolin
Diat	Diatomite
Dol	Dolomite
Fel	Feldspar
Fl	Fluorite
Ga	Gallium
Gr	Graphite
Grt	Garnet
Gyps	Gypsum
HMS	Heavy-mineral sands
Lmst	Limestone
Mgs	Magnesite
Mica	Mica
MIO	Micaceous iron oxide
Nb	Niobium
Och	Ochre
Ph	Phosphate
Py	Pyrite
Qtz	Quartz
REE	Rare-earth elements
Salt	Salt
Si	Silicon
Spd	Spodumene
Spon	Spongolite
Spt	Saponite
Svs	Silica sand
Tlc	Talc
Vrm	Vermiculite
●	ENERGY MINERALS
	Oil unless otherwise indicated
C	Coal
U	Uranium
✱	Gas
✱	Oil and gas

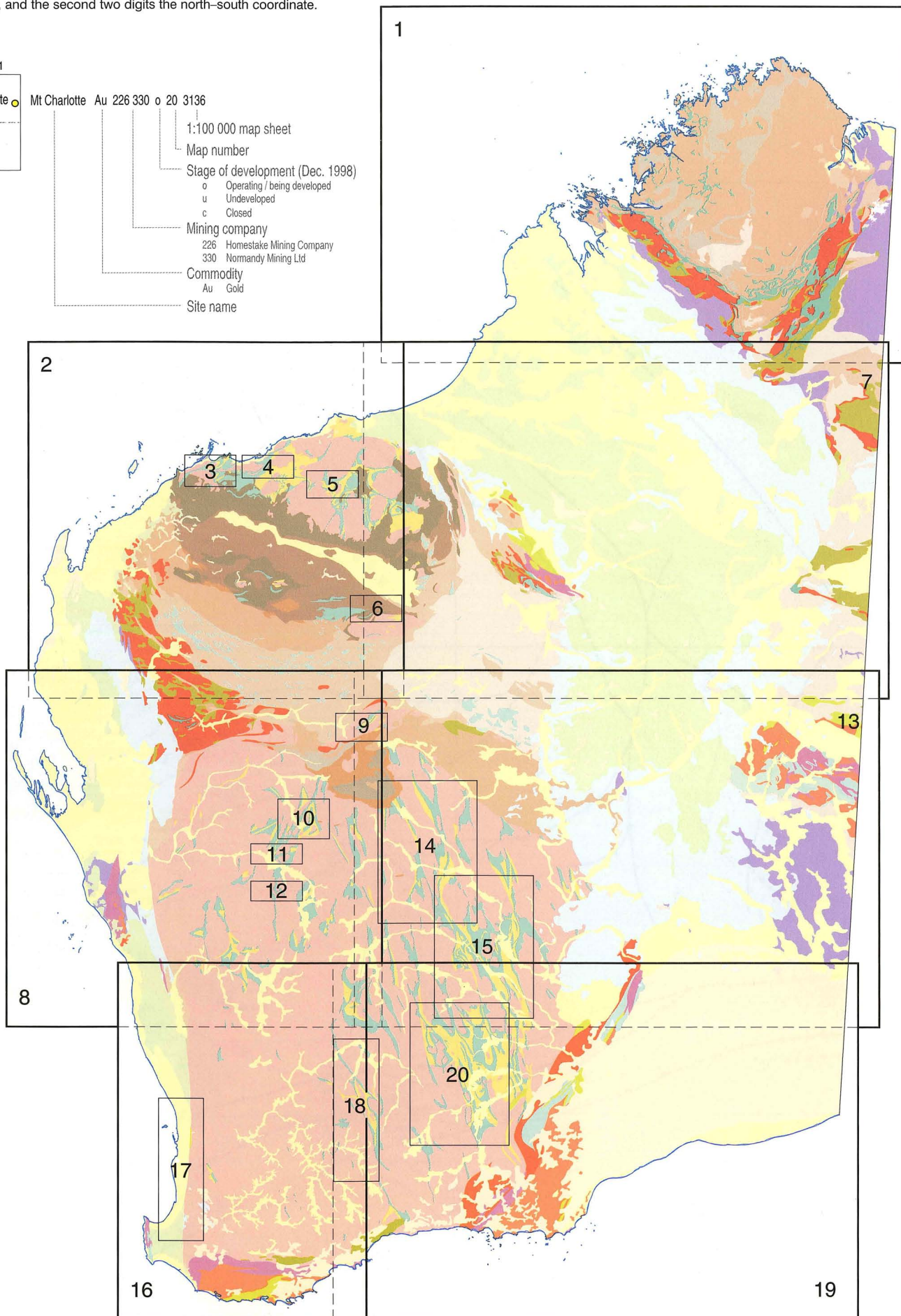
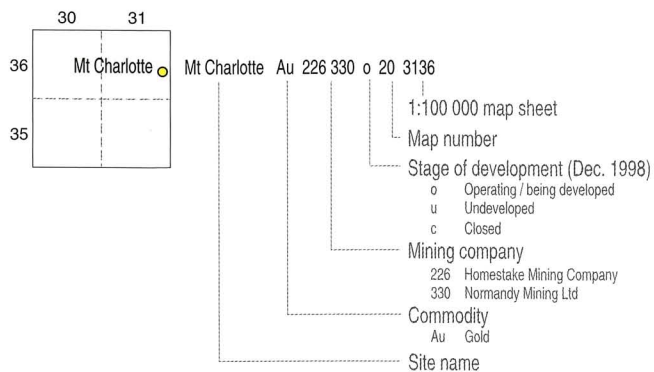


(broken lines indicate extrapolation beneath younger rocks)

Fault.....	.....
Normal fault; ticks on downthrown side.....	.....
Thrust; teeth on upthrust side.....	.....
Thrust reactivated as normal fault.....	.....
Meteorite impact structure.....	.....
Major road.....	.....
Road or track.....	.....
Railway.....	.....
Gas pipeline.....	.....
City.....	.....
Townsite	
population 10 000–15 000.....	○ BUSSELTON
1000–10 000.....	○ PINJARRA
less than 1000.....	○ Dardanup
Homestead.....	■ Carbine
Locality.....	• Overlander
	• Roadhouse
Watercourse, predominantly ephemeral.....	.....
Palaeodrainage, inactive or rarely active.....	.....
Bathymetric contour, metres.....	200
Mine site	
operating or under development.....	Lights Of Israel
closed or undeveloped.....	Sand King
Inset map enlargement.....	11

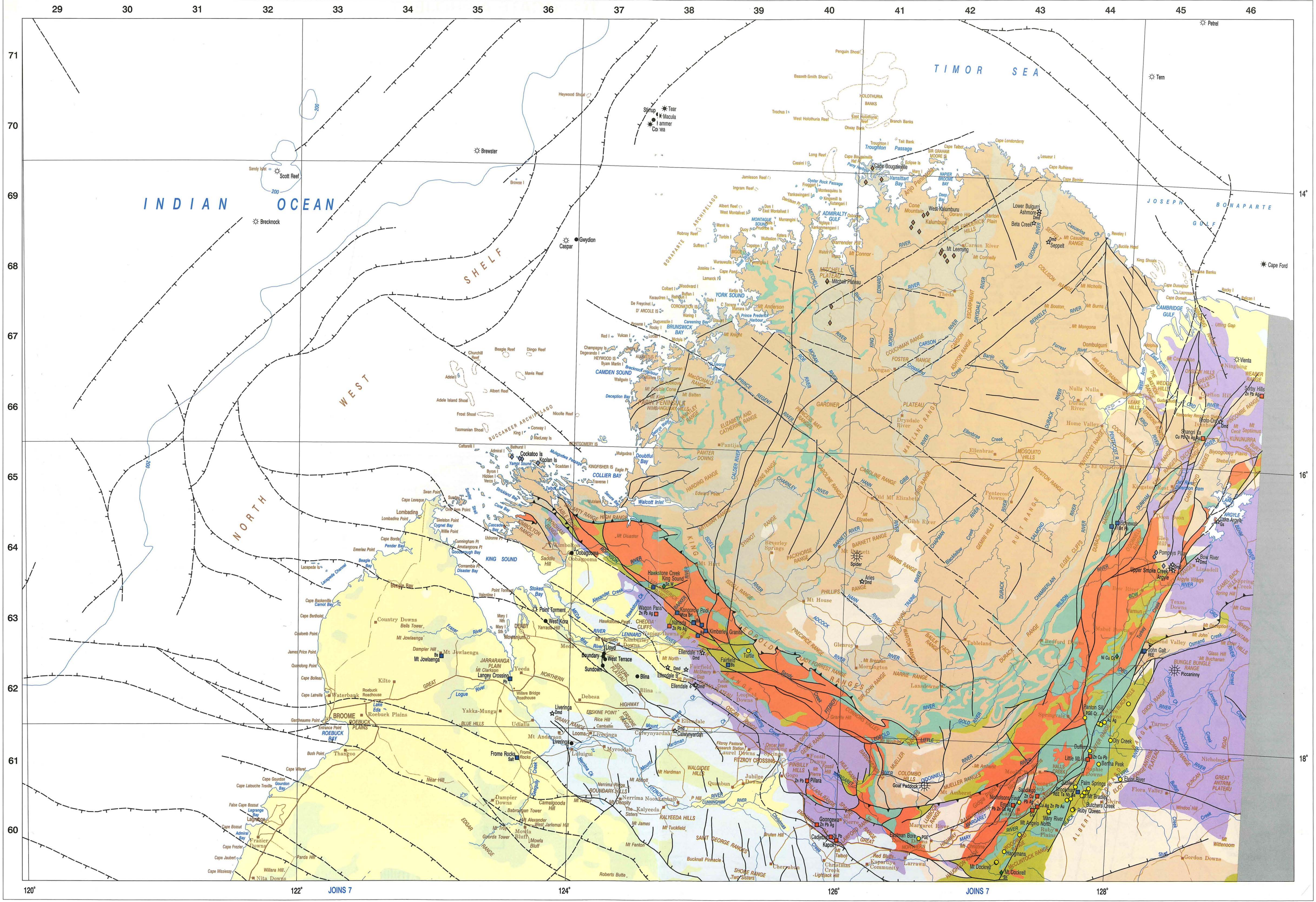
# TO LOCATE A PROJECT

Two code numbers are used to locate a project in this booklet. The first code number is the map number and the second represents the 1:100 000 map sheet number. From the four-digit map sheet number, the first two digits give the east-west coordinate, and the second two digits the north-south coordinate.

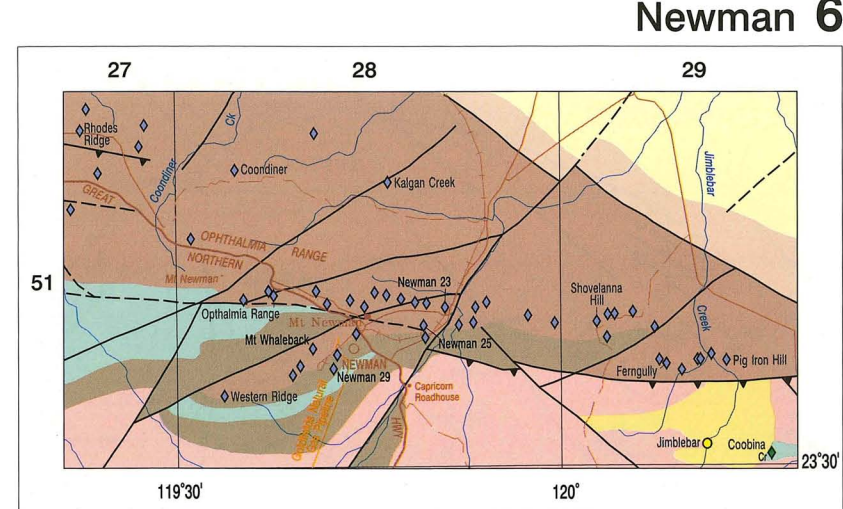


1:10 million 0 500 km

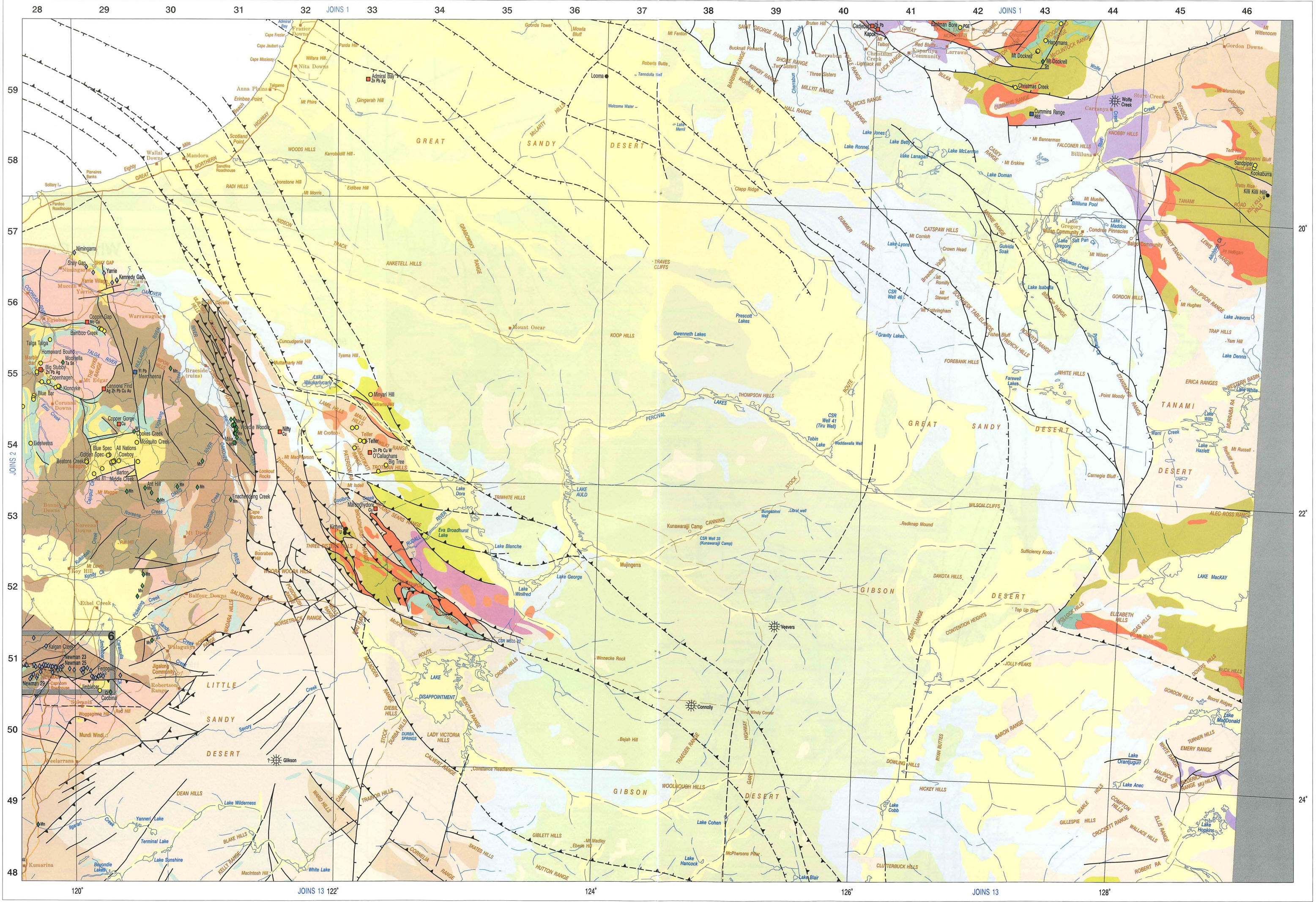




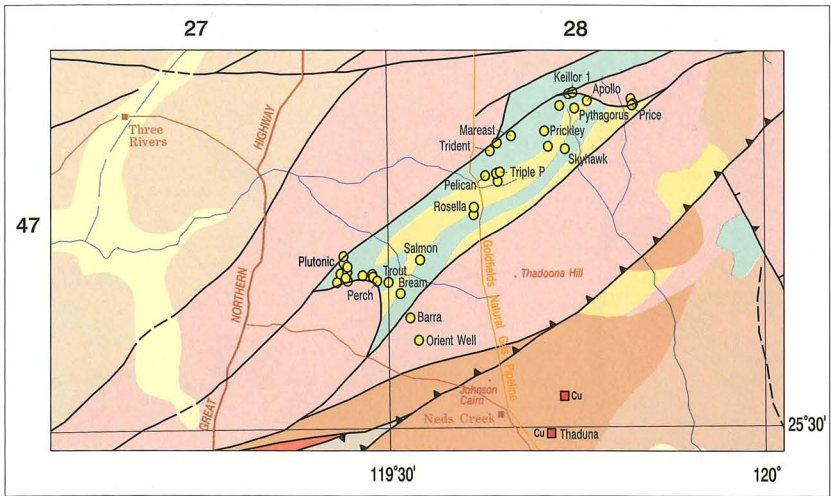
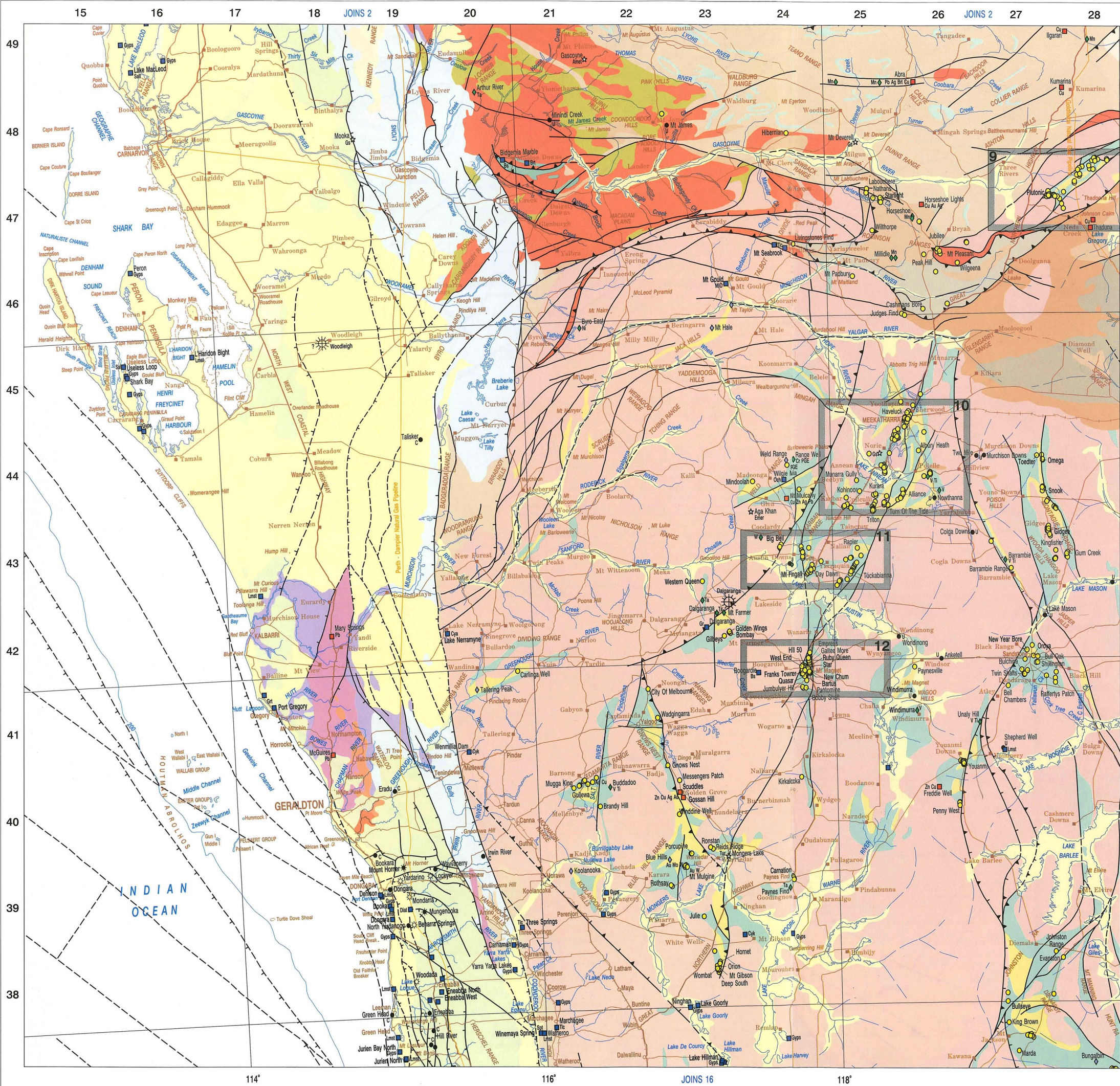




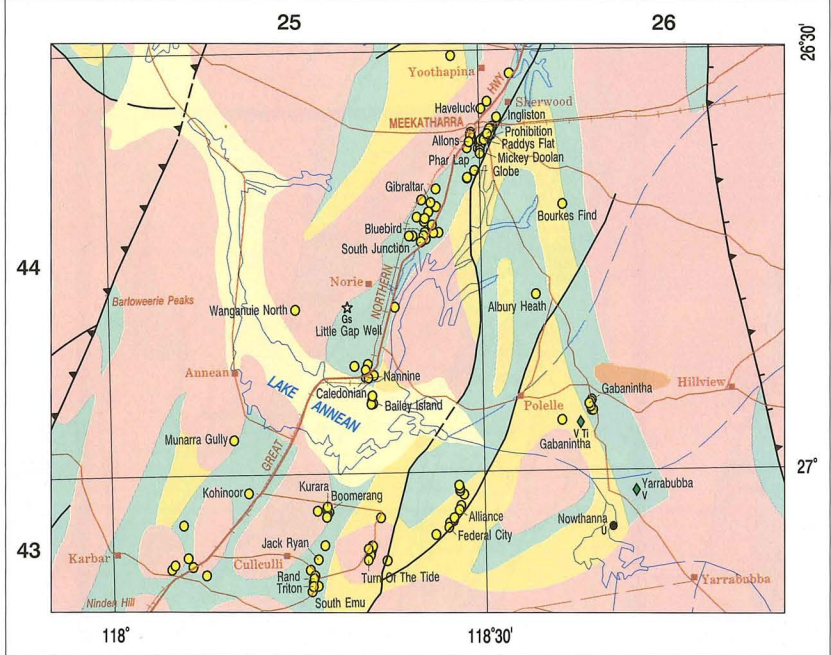




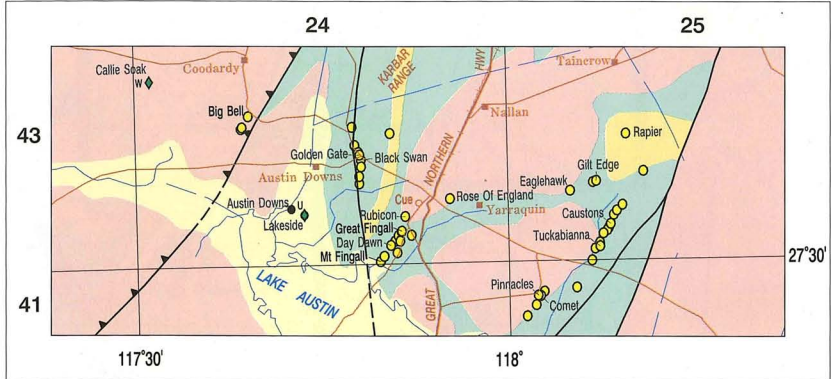




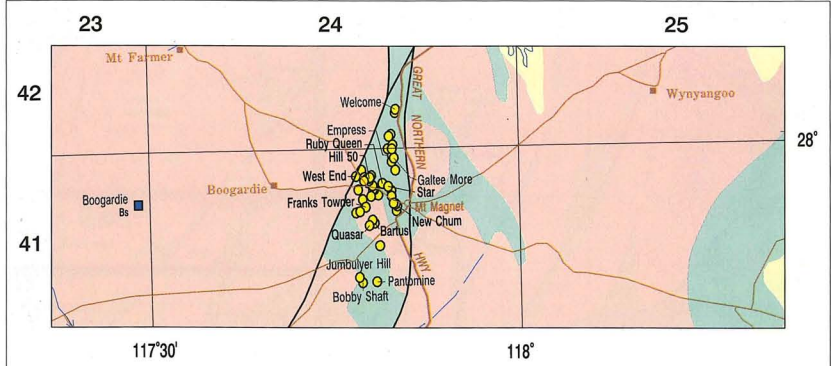
# Meekatharra 10



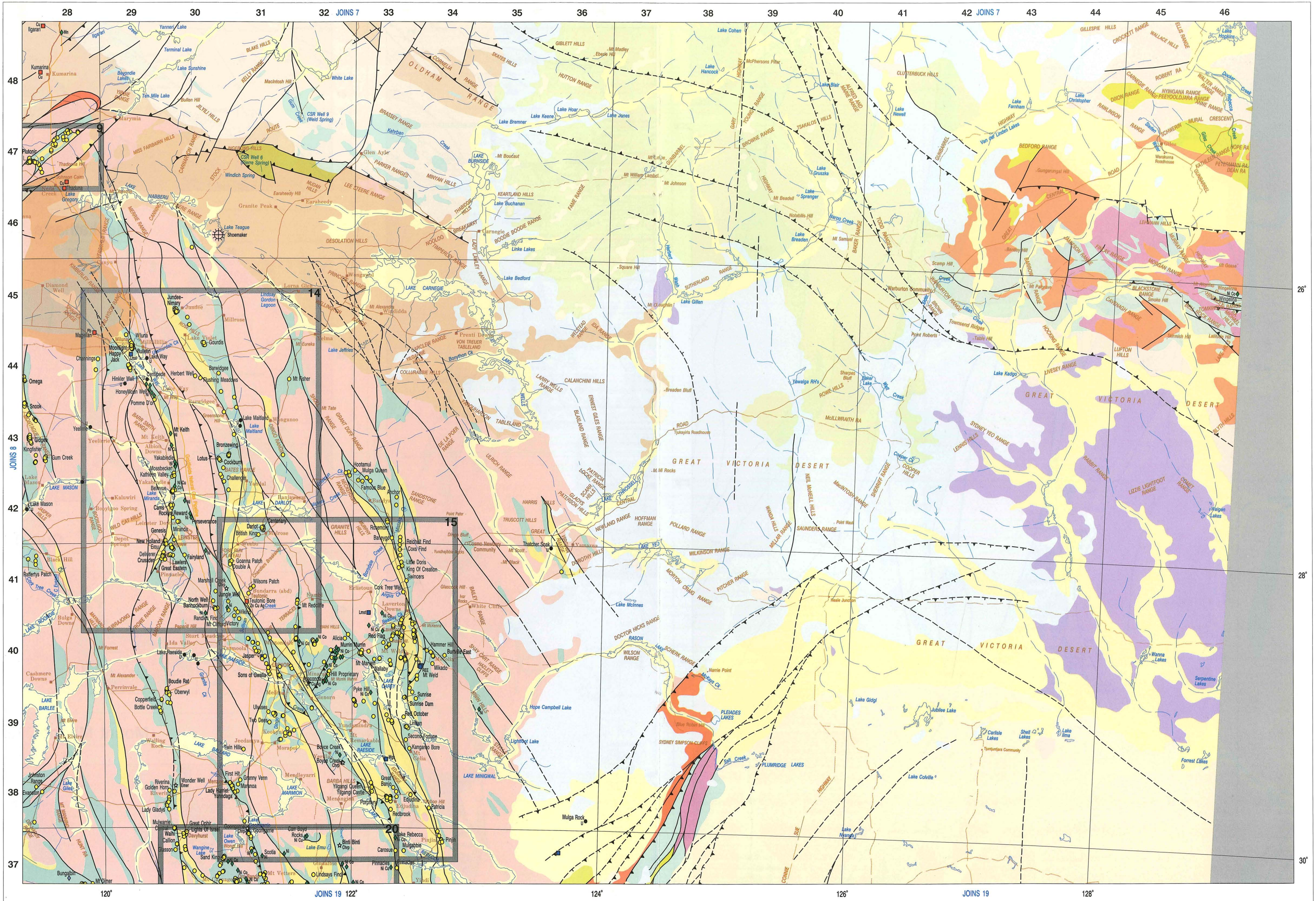
## Cue 11



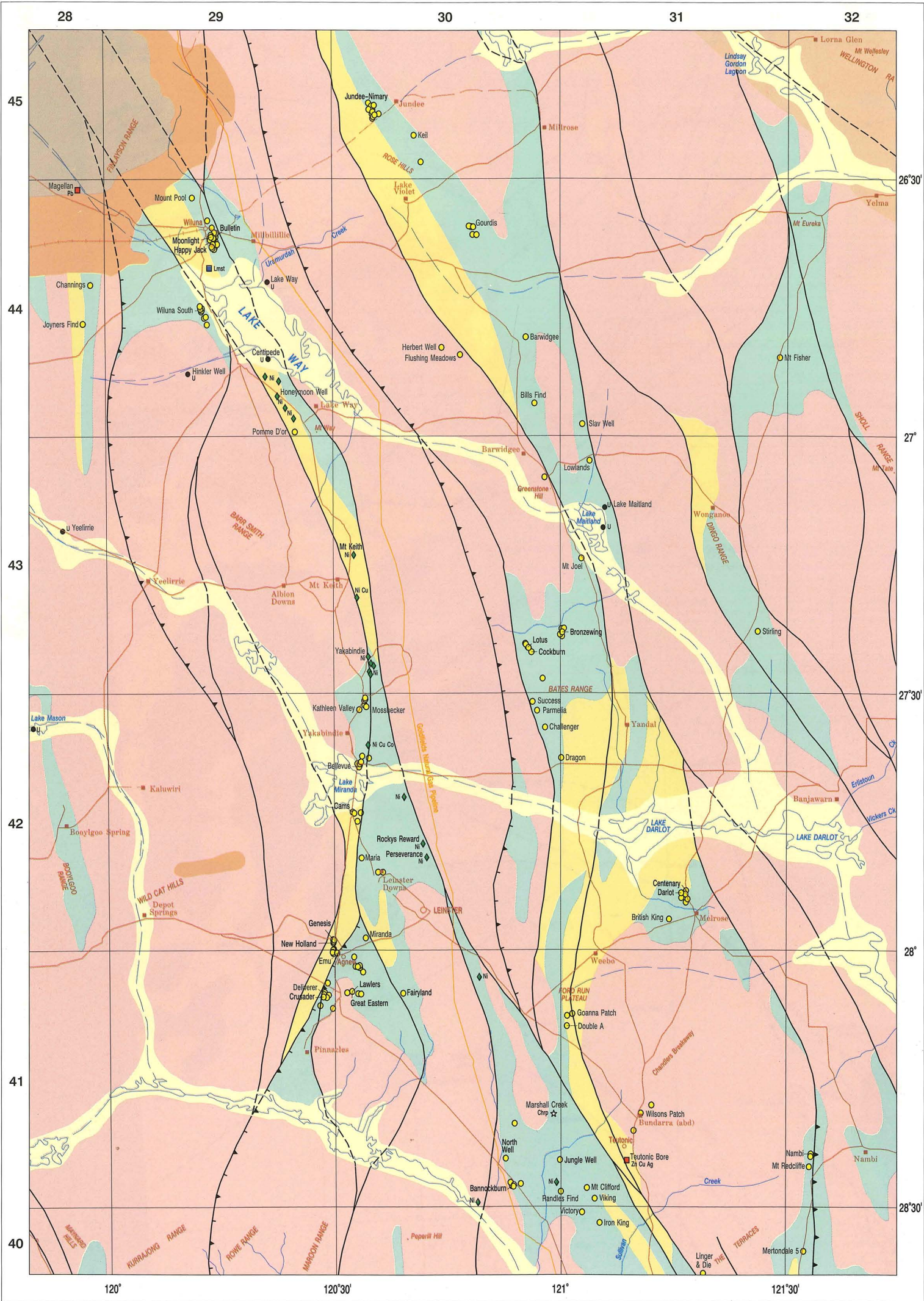
## Mount Magnet 12



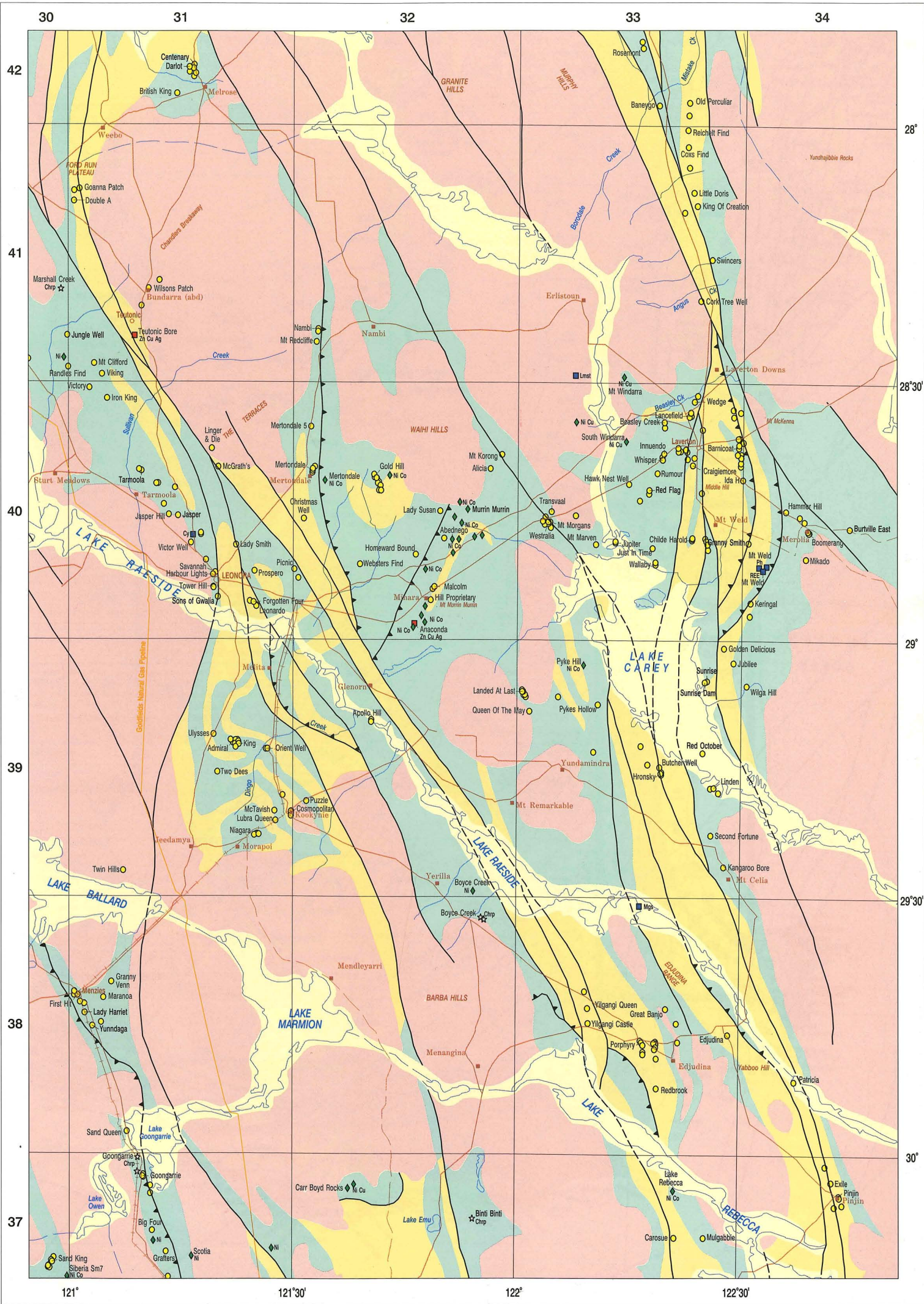




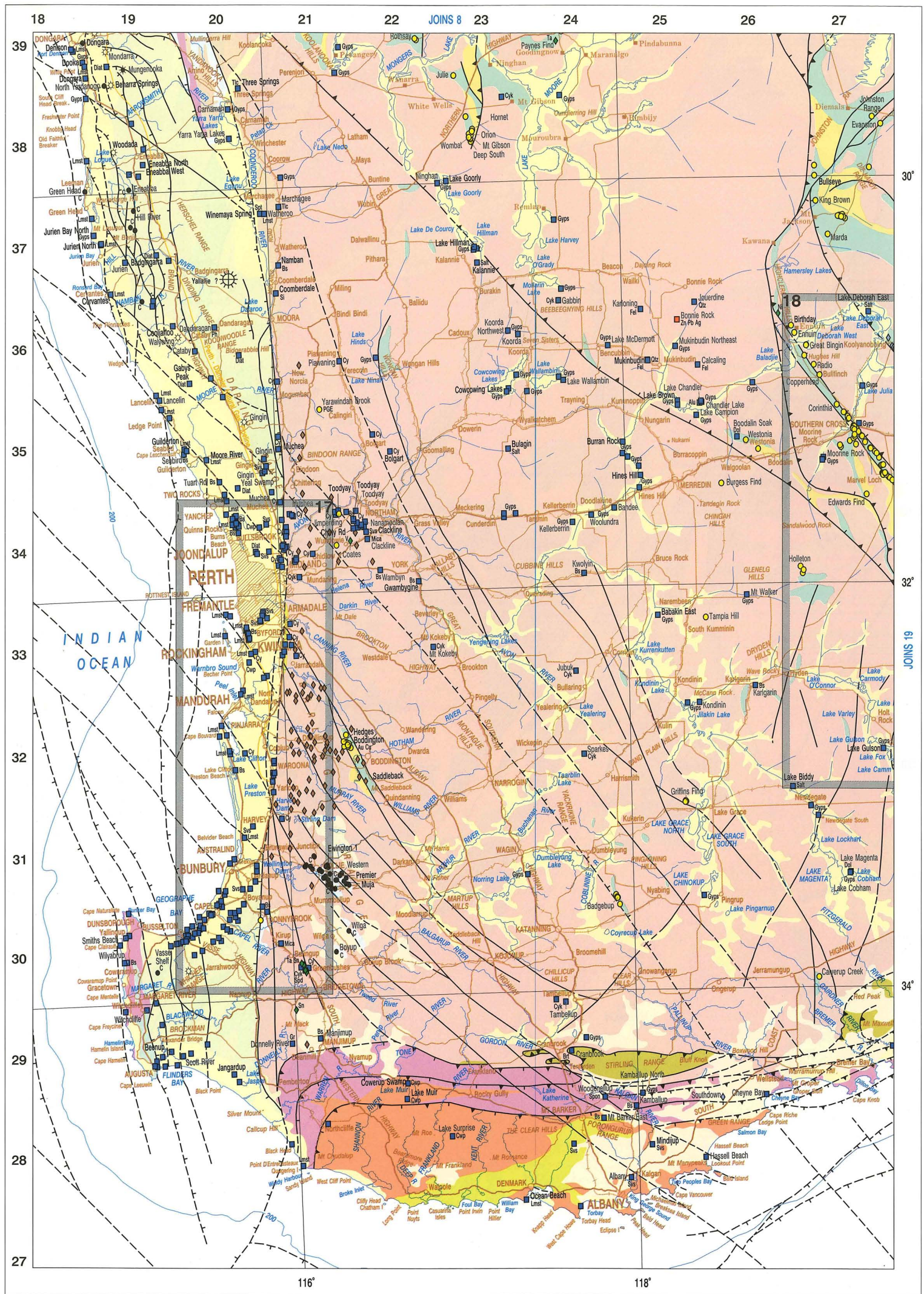




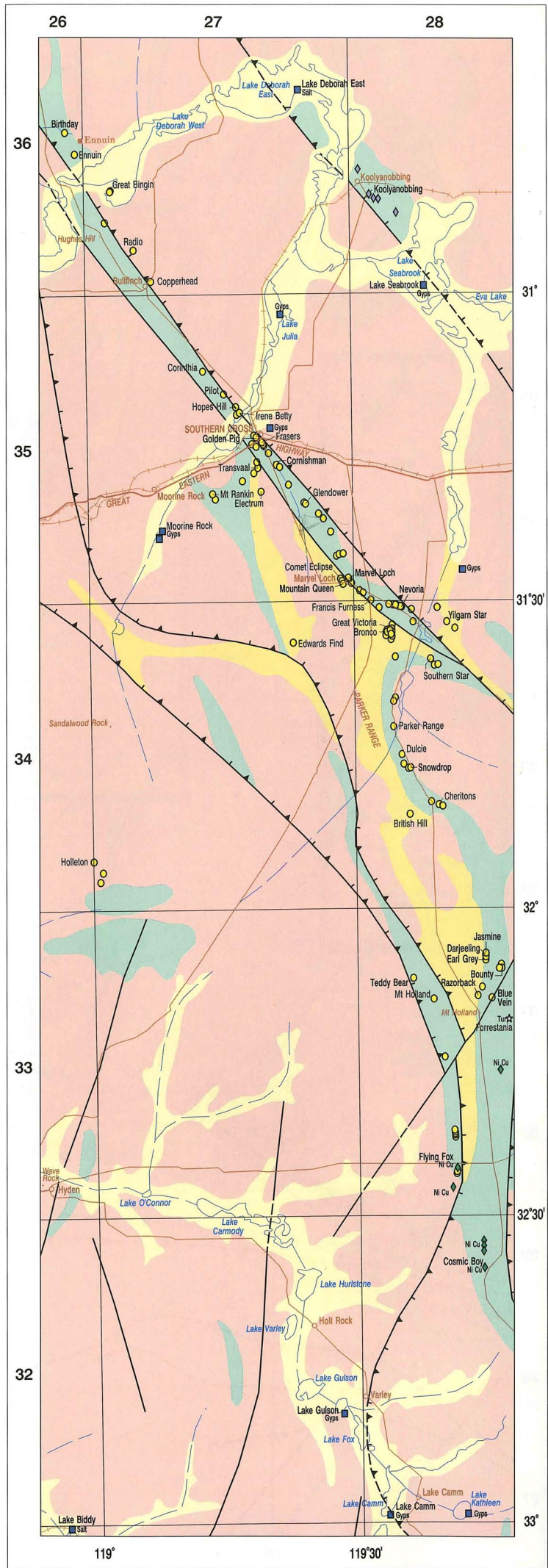
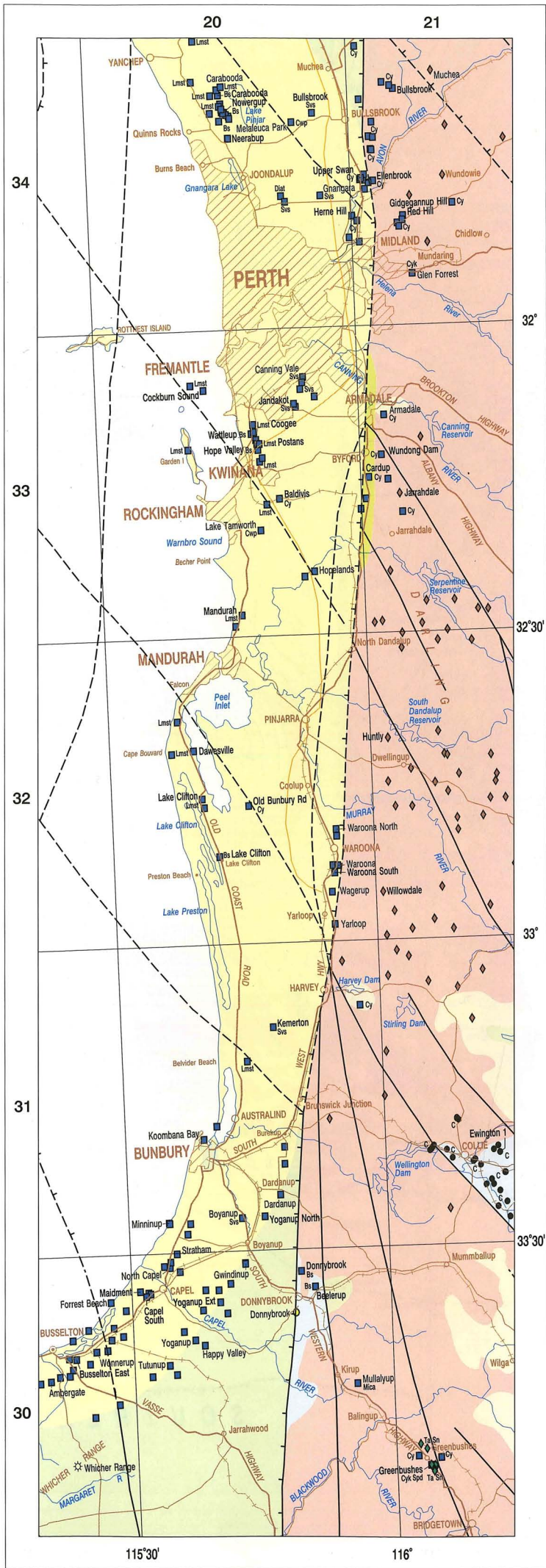




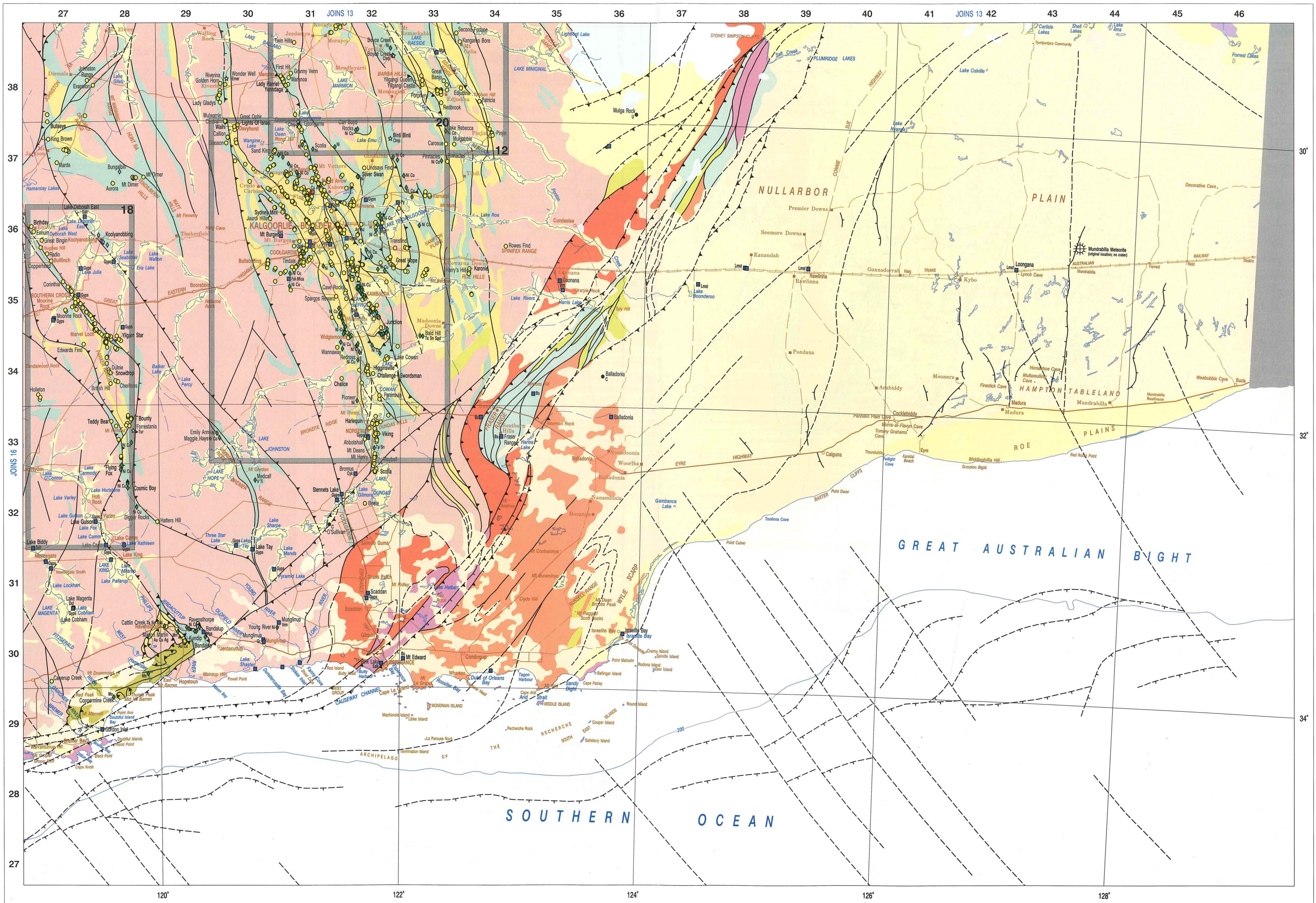




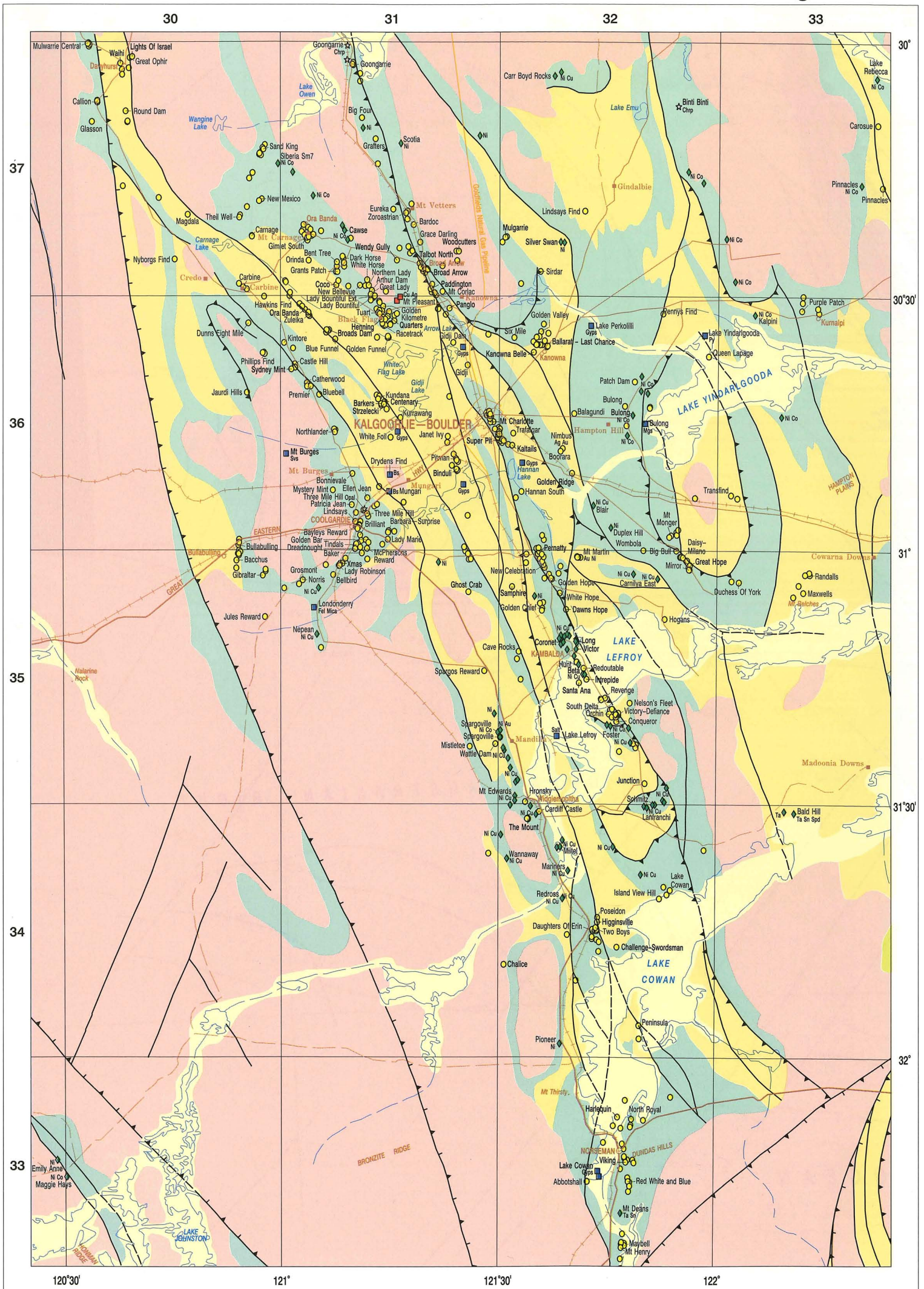













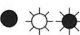




# MINERAL INDEX

Site	Commodity	Company	Stage	Map	Ref.
 <b>ALLOYING AND SPECIALTY METALS</b>					
Abednego	Ni Co	2	u	15	3240
Ant Hill	Mn	433	u	7	3053
Arthur River	Ta	384	u	8	2048
Bald Hill	Ta Sn Spd	432	u	20	3334
Balla Balla	V Ti Fe	455	u	4	2456
Bandalup	Ni Co	113	u	19	2930
Barrambie	V Ti	374 468	u	8	2743
Beta	Ni Cu	508	o	20	3235
Blair	Ni Cu	508	c	20	3236
Bore Creek	Ta	329	u	2	2656
Boyce Creek	Ni	222	u	15	3239
Buddadoo	V Ti	242	u	8	2140
Bulong	Ni Co	377	o	20	3236
Byro East	Ni	389	u	8	2145
Callie Soak	W	329	u	11	2443
Carnilya East	Ni Cu	508	c	20	3235
Carr Boyd Rocks	Ni Cu	134	c	20	3237
Cattlin Creek	Ta Sn Spd	204	u	19	2930
Cawse	Ni Co	91	o	20	3137
Coates	V	106	c	16	2134
Coobina	Cr	117 131	c	6	2951
Cookes Creek	W	329	u	7	2954
Coppermine Creek	Mn	329	u	19	2829
Coronet	Ni Cu	508	o	20	3235
Cosmic Boy	Ni Cu	346	o	18	2832
Dalgaranga	Ta	417	c	8	2342
Digger Rocks	Ni Cu	346	c	19	2832
Don Well	V Ti	455	u	4	2456
Duplex Hill	Ni	329	u	20	3236
Emily Anne	Ni	83 273 378	u	20	2933
Enacheddong Creek	Mn	329	u	7	3153
Flying Fox	Ni Cu	346	o	18	2833
Foster	Ni Cu	508	c	20	3235
Friendly Creek	Sn	424	c	2	2555
Gabarintha	V Ti	236	u	10	2644
Hillside	Ta Sn	329	c	2	2754
Honeymoon Well	Ni	346 397	u	14	2944
Horseshoe	Mn	117 270	u	8	2647
Hunt	Ni Cu	508	c	20	3235
Kalpini	Ni Co	222	u	20	3336
King Sound	Sn W	52	c	1	3864
Lake Rebecca	Ni	222	u	20	3337
Lanfranchi	Ni Cu	508	c	20	3234
Long	Ni Cu	508	o	20	3235
Maggie Hays	Ni Co	83 273 378	u	20	3033
Mariners	Ni Cu	508	c	20	3234
Medcalf	V Ti	35	u	19	3032
Mertondale	Ni Co	190	u	15	3240
Miitel	Ni Cu	508	c	20	3234
Mike	Mn	117	c	7	3154
Millidie	Mn	117 270	c	8	2546
Moolyella	Ta Sn	329	c	2	2855
Mt Alexander	W	398	u	2	2052
Mt Deans	Ta Sn	329	u	20	3233
Mt Dockrell	Sn	329	u	1	4360
Mt Edwards	Ni Cu	508	c	20	3235
Mt Farmer	Ta	392	c	8	2342
Mt Keith	Ni	508	o	14	3043
Mt Windarra	Ni Cu	508	c	15	3341
Murrin Murrin	Ni Co	14 188	o	15	3240
Nepean	Ni Cu	436	c	20	3135
Paynes Find	Ta	329	c	8	2439
Perseverance	Ni	508	o	14	3042
Pilgangoora	Ta	277	c	5	2655
Pinnacles	Ni Co	251	u	20	3337
Pioneer	Ni	329	u	20	3234
Pyke Hill	Ni Co	92 169	u	15	3339
Radio Hill	Ni Cu	464	o	3	2256
Range Well	Cr PGE	75 106 144	u	8	2444
Ravensthorpe	Ni	458	u	19	2930
Redross	Ni Cu	508	c	20	3234
Rockys Reward	Ni	508	o	14	3042
Schmitz	Ni Cu	508	c	20	3235
Scotia	Ni	508	c	20	3137
Shaw River	Ta Sn	329	c	2	2754

Site	Commodity	Company	Stage	Map	Ref.
Sherlock Bay	Ni Cu	136 144	u	2	2456
Siberia SM7	Ni Co	508	c	20	3037
Silver Swan	Ni	346	o	20	3237
South Windarra	Ni Cu	508	c	15	3340
Spargoville	Ni	10	c	20	3135
Unaly Hill	V Ti	329	u	8	2641
Victor	Ni Cu	508	o	20	3235
Wannaway	Ni Cu	508	c	20	3234
Windimurra	V	188 374	o	8	2641
Wingelina	Ni Co	307	u	13	4645
Wodgina	Ta	432	o	5	2655
Woodie Woodie	Mn	117	c	7	3154
Yakabindie	Ni	333	u	14	3043
Yarrabubba	V	236	u	10	2643
Young River	Ni	329	u	19	3030
 <b>ALUMINA</b>					
Cape Bougainville	Bx	3 7 111	u	1	4170
Huntly	Bx	7	o	17	2132
Jarrahdale	Bx	7	o	17	2133
Mitchell Plateau	Bx	3 7 111	u	1	4068
Mt Leeming	Bx	329	u	1	4268
Muchea	Bx	329	u	17	2134
Saddleback	Bx	3 393	o	16	2132
West Kalumburu	Bx	329	u	1	4269
Willowdale	Bx	7	o	17	2132
 <b>BASE METALS</b>					
Abra	Pb Ag Brt Cu	196 333	u	8	2648
Admiral Bay	Zn Pb Ag	397	u	7	3359
Anaconda	Zn Cu Ag	317	c	15	3240
Bali Hi	Pb Au	329	u	2	2251
Bali Lo	Cu	329	u	2	2251
Big Stubby	Zn Pb Ag	444	u	2	2855
Bonnie Rock	Zn Pb Ag	329	u	16	2536
Cadjebut	Zn Pb	497	c	7	4060
Copper Gorge	Cu	307	u	7	2954
Coppin Gap	Mo Cu	396	u	2	2956
Elizabeth Hill	Ag	148 269	o	3	2255
Emull	Pb Zn Cu Ag	278	u	1	4361
Freddie Well	Zn Cu	266 319	u	8	2640
Goongewa	Zn Pb Ag	497	o	1	4060
Gossan Hill	Zn Cu Ag Au	330	o	8	2240
Horseshoe Lights	Cu Au Ag	151 199	c	8	2647
Ilgarari	Cu	190 491	u	8	2849
Joy Helen	Pb Zn	329	c	2	2051
Kapok	Zn Pb	497	o	7	4160
Kumarina	Cu	254	c	8	2848
Lennons Find	Ag Zn Pb Cu Au	364	u	2	2955
Little Mt Isa	Zn Cu Pb	266	u	1	4461
Magellan	Pb	280	u	14	2844
Maroochydore	Cu	320 442	u	7	3353
Mary Springs	Pb	397 491	u	8	1842
McGuire	Pb	Unknown	c	8	1841
Mons Cupri	Cu	277	u	4	2456
Mt Angelo North	Cu Ag Zn Pb Au	16 312	u	1	4361
Mt Mulcahy	Cu Zn Ag Pb	249	u	8	2443
Mt Pleasant	Cu	473	c	20	3136
Narlara	Zn Pb Ag	487	c	1	3863
Nifty	Cu	442	o	7	3254
Nimbus	Ag Au	266	u	20	3236
O'Callaghans	Zn Pb Cu W	324	u	7	3354
Panorama	Zn Cu Ag	346 423	u	5	2755
Pillara	Zn Pb	497	o	1	4061
Prairie Downs	Zn Pb Cu Ag	83 433	u	2	2750
Range	Pb Cu Ag	470	u	2	1953
Salt Creek	Zn Cu Pb Ag	77	u	4	2456
Sandiego	Cu Ag	16 266	u	1	4361
Scuddles	Zn Cu Ag Au	330	o	8	2240
Shangri La	Cu Pb Zn Ag Au	119	c	1	4666
Sorby Hills	Zn Pb Ag	50 469	u	1	4667
Teutonic Bore	Zn Cu Ag	109 432	c	14	3141
Thaduna	Cu	199	u	9	2846
Wagon Pass	Zn Pb Ag	497	u	1	3863
Whim Creek	Cu	277	u	4	2456
Whundo	Cu	277	u	3	2255

Site	Commodity	Company	Stage	Map	Ref.
 <b>ENERGY MINERALS</b>					
Agincourt	Oil Gas	18	o	2	2056
Alkimos	Oil	18	o	2	2056
Angel	Gas Oil	513	u	2	2258
Anketell	U	5	u	8	2641
Athena	Gas	310	u	2	2159
Austin Downs	U	329	u	11	2443
Australind	Oil Gas	484	u	2	1955
Balladonia	C	199	u	19	3634
Bambra	Gas	18	c	2	2056
Barrow Island	Oil	484	o	2	1956
Beharra Springs	Gas	64	o	8	1939
Bennett Well	U	329	u	2	1952
Blina	Oil	82	o	1	3762
Bookara	C	329	u	8	1839
Border	Gas	12	u	2	2056
Boundary	Oil	82	o	1	3763
Boyup	C	205	u	16	2130
Brecknock	Gas	513	u	1	3269
Brewster	Gas	513	u	1	3570
Campbell	Gas Oil	18	o	2	2057
Cape Ford	Oil Gas	125	u	1	4668
Capella	Gas Oil	513	u	2	2158
Caribou	Oil Gas	18	u	2	2157
Caspar	Gas	51	u	1	3668
Centipede	U	5	u	14	2944
Central Gorgon	Gas Oil	484	u	2	1857
Cherring	Gas	12	u	2	2257
Chervil	Oil	18	o	2	1955
Chinook	Oil Gas	51	o	2	1855
Chrysaor	Gas Oil	484	u	2	1857
Colga Downs	U	5	u	8	2643
Cornea	Oil Gas	420	u	1	3770
Cossack	Oil Gas	513	o	2	2158
Cowle	Oil Gas	484	o	2	1854
Crest	Oil Gas	484	o	2	1955
Dionysus	Gas	484	u	8	1857
Dixon	Gas Oil	513	u	2	2058
Dockrell	Gas Oil	513	u	2	2058
Dongara	Oil	21	o	8	1839
Eaglehawk	Oil	513	u	2	2158
East Spar	Gas	18	o	2	1856
Echo	Gas Oil	513	u	2	2058
Egret	Oil	513	u	2	2158
Eneabba	C	196	u	16	1938
Eradu	C	329	u	8	1940
Ewington 1	C	205	o	17	2131
Gingin	Gas	153	u	16	2035
Gipsy	Oil	18	u	2	2056
Goodwyn	Gas Oil	513	o	2	2058
Goodwyn South	Gas Oil	513	u	2	2058
Gorgon	Gas Oil	484	u	2	1856
Green Head	C	329	u	16	1838
Griffin	Oil	51	o	2	1855
Gwydion	Oil	51	u	1	3668
Hammer	Oil	420	u	1	3870
Harriet	Oil	18	o	2	2056
Hermes	Oil Gas	513	o	2	2159
Hill River	C	397	u	16	1937
Hinkler Well	U	329	u	14	2944
Irwin River	C	374	u	8	2039
Jailor Bore	U	5	u	2	1950
Jaubert	Oil	513	u	2	2258
John Brookes	Gas	310	u	2	1957
Keast	Gas Oil	513	u	2	2058
Keast Deep	Gas Oil	513	u	2	2058
Killi Killi Hills	U	454	u	7	4658
Kintyre	U	397	u	7	3353
Lake Maitland	U	5	u	14	3143
Lake Mason	U	5	u	8	2742
Lake Raeside	U	329	u	13	3040
Lake Way	U	200 346 397	u	14	2944
Lakeside	U	5 155	u	11	2443
Lambert	Oil Gas	513	u	2	2159
Lambert Deep	Gas Oil	513	u	2	2159
Leatherback	Oil	18	u	2	1754
Legendre	Oil	513	u	2	2258
Legendre South	Oil Gas	513	u	2	2258

Site	Commodity	Company	Stage	Map	Ref.
Liveringa	C	329	u	1	3761
Lloyd	Oil	82	o	1	3763
Lockyer	Gas	375	u	8	1939
Longneck	Oil	18	u	1	1854
Looma	Oil	420	u	7	3659
Macedon	Gas	51	o	2	1754
Macula	Oil Gas	420	u	1	3870
Maitland	Gas	18	u	2	1956
Manyingee	U	349	u	2	1953
Melanie	Gas	478	u	2	1754
Minindi Creek	U	329	u	8	2148
Mondarra	Gas	21	c	8	1939
Montague	Gas Oil	513	u	2	2158
Mt Horner	Oil Gas	375	o	8	1939
Mt James	U	329	u	8	2248
Muja	C	205	o	16	2131
Mulga Rock	U	367	u	13	3638
Mungnooka	Oil Gas	64	u	8	1939
Murchison Downs	U	5	u	8	2744
Mutineer	Oil	414	u	2	2259
Nimrod	Oil	51	u	2	1855
North Gorgon	Gas Oil	484	u	2	1857
North Herald	Oil Gas	336	o	2	1955
North Rankin	Gas Oil	513	o	2	2158
North Rankin West	Gas Oil	513	u	2	2158
North Yandanogo	Oil	64	c	8	1939
Novara	Oil	51	u	2	1755
Nowthanna	U	5 134	u	10	2643
Oobagooma	U	349	u	1	3664
O'Sullivan	C	338 468	u	19	3132
Outtrim	Oil	51	u	2	1754
Pasco	Oil Gas	484	u	2	1956
Peck	Oil	18	u	2	2056
Perseus	Gas Oil	513	o	2	2158
Petrel	Gas Oil	414	o	1	4572
Pitcairn	Oil	414	u	2	2259
Point Torment	Gas	82	u	1	3663
Premier	C	490	o	16	2131
Pyrenees	Oil Gas	51	u	2	1754
Ramillies	Oil	51	u	2	1855
Rankin	Gas Oil	513	u	2	2058
Reindeer	Gas	18	u	2	2157
Ridley	Oil	18	u	2	1854
Rivoli	Gas	478	u	2	1754
Roller	Oil Gas	484	o	2	1854
Rose	Oil Gas	18	u	2	2056
Rosette	Gas Oil	18	o	2	2056
Rough Range	Oil	403	u	2	1753
Saladin	Oil Gas	484	o	2	1955
Scindian	Oil Gas	51	o	2	1855
Scott Reef	Gas	513	u	1	3269
Sculptor	Gas	513	u	2	2058
Searipple	Gas Oil	513	u	2	2158
Shepherd Well	U	329	u	8	2740
Sinbad	Gas Oil	18	o	2	2057
Skate	Oil Gas	484	o	2	1854
South Chervil	Oil Gas	336	c	2	1955
South Pepper	Oil Gas	18	c	2	1955
Spar	Gas	484	u	2	1856
Stag	Oil	18	o	2	2157
Stirrup	Oil	420	u	1	3870
Sundown	Oil	82	o	1	3762
Talisker	C	329	u	8	1944
Talisman	Oil	414	c	2	2259
Tanami	Oil Gas	18	o	2	2056
Tear	Oil Gas	420	u	1	3870
Tern	Gas	414	o	1	4571
Thatcher Soak	U	467	u	13	3641
Tidepole	Oil Gas	513	c	2	2058
Tubridgi	Gas	64	o	2	1854
Turee Creek	U	5	u	2	2651
Two Mile	U	5	u	8	2744
Ulidia	Gas	18	u	2	2056
Vasse Shelf	C	397	u	16	1930
Vienta	Gas	11	u	1	4667
Vincent	Oil	310	u	2	1755
Walyering	Gas	375	c	16	1936
Wanaea	Oil Gas	513	o	2	2158
Wandoo	Oil Gas	310	o	2	2157



Site	Commodity	Company	Stage	Map	Ref.
Wayvanerry	Oil	375	u	8	1939
West Dixon	Oil Gas	513	u	2	2058
West Kora	Oil	82	c	1	3663
West Terrace	Oil	82	o	1	3762
West Tryal Rocks	Gas Oil	484	u	2	1957
Western	C	490	c	16	2131
Whicher Range	Gas	11	u	17	1930
Wilcox	Gas Oil	513	u	2	1957
Wilga	C	490	u	16	2130
Windimurra	U	5	u	8	2641
Withnell	Gas	414	u	2	2055
Wondinong	U	5	u	8	2542
Wonnich	Oil Gas	18	u	2	1957
Woodada	Gas Oil	375	o	16	1938
Woollybutt	Oil	216	u	2	1856
Yammaderry	Oil Gas	484	o	2	1855
Yardarino	Gas	21	u	8	1939
Yeelirrie	U	508	u	14	2843
Yodel	Gas Oil	513	u	2	2058

**GEMS**

Aga Khan	Emer	369	c	8	2343
Argyle	Dmd	24 397	o	1	4564
Aries	Dmd	329	u	1	4164
Ashmore	Dmd	24 397 443	u	1	4369
Beta Creek	Dmd	24 397 443	u	1	4369
Binti Binti	Chrp	56	o	20	3237
Bow River	Dmd	330	c	1	4664
Boyce Creek	Chrp	494	c	15	3238
Calwynyardah	Dmd	257 503	u	1	3861
Divide Creek	Gs	431	o	2	2551
Ellendale 4	Dmd	24 397	u	1	3862
Ellendale 9	Dmd	24 397	u	1	3862
Ellendale 17	Dmd	499	u	1	3863
Forrestania	Tur	217	c	18	2833
Gascoyne	Amet	430	c	8	2149
Goongarrie	Chrp	279 373	c	20	3137
Lake Argyle	Gs	386	c	1	4665
Little Gap Well	Gs	335	c	10	2544
Liveringa	Dmd	519	u	1	3662
Lower Bulgurri	Dmd	24 397 443	u	1	4369
Marillana Station	Gs	46	o	2	2852
Marshall Creek	Chrp	19	c	14	3041
Mongers Lake	Tur	485	u	8	2339
Mooka	Gs	76	c	8	1848
Mt Brockman	Gs	460	c	2	2353
Mt Deverell	Gs	46	c	8	2548
Proto-Ord	Dmd	26 85 380	u	1	4666
Seppelt	Dmd	443	u	1	4369
Three Mile Hill	Opal	298	u	20	3136
Upper Smoke Creek	Dmd	24 397	o	1	4564
Wonder Well	Emer	516	c	13	3038

**INDUSTRIAL MINERALS**

Albany	Svs	502	u	16	2428
Ambergate	HMS	329	c	17	1930
Armadale	Cy	65	c	17	2133
Babakin East	Gyps	149	o	16	2533
Badgingarra	Diat	230	o	16	1937
Baldivis	Cy	295	o	17	2033
Balladonia	HMS	159	u	19	3633
Bandalup	Mgs	10 77	c	19	2930
Bandee	Gyps	329	c	16	2434
Beelerup	Bs	Unknown	o	17	2030
Beenup	HMS	48	o	16	1929
Bidgemia Marble	Bs	440	u	8	2047
Bolgart	Cy	295	o	16	2235
Boodalin Soak	Dol	407	c	16	2635
Boogardie	Bs	342	c	12	2341
Boyanup A	Svs	184	c	17	2031
Brockman	REE Ta Nb Ga	202 492	u	1	4461
Bromus	Cyk	339	u	19	3233
Bulagin	Salt	122	o	16	2335
Bullsbrook	Cy	296	o	17	2134
Bullsbrook	Svs	6	o	17	2034
Bulong	Mgs	87 128 322 439	u	20	3236
Burran Rock	Gyps	168	o	16	2435
Busselton East	HMS	79	o	17	1930
Calcaling	Fel	233	c	16	2536

Site	Commodity	Company	Stage	Map	Ref.
Canning Vale	Svs	261	c	17	2033
Cape Range	Lmst	161	o	2	1753
Capel South	HMS	394	o	17	2030
Carabooda	Bs	272	o	17	2034
Carabooda	Lmst	479	c	17	2034
Cardup	Cy	295	o	17	2133
Carnamah	Gyps	329	c	8	2038
Cataby	HMS	394	u	16	2036
Cervantes	Lmst	493	o	16	1937
Chandler Lake	Gyps	409	c	16	2535
Cheyne Bay	HMS	483	c	16	2629
Chitty Road	Cy	295	o	16	2134
Clackline	Mica	329	c	16	2234
Clackline	Svs	401	o	16	2234
Cleaverville	Lmst	365	c	3	2356
Cockburn Sound	Lmst	108	o	17	2033
Coogee	Lmst	108	o	17	2033
Cooljarloo	HMS	253 463	o	16	1936
Coomberdale	Si	421	o	16	2136
Coonana	Vrm	233	u	19	3535
Cowcowing Lakes	Gyps	493	o	16	2335
Cowerup Swamp	Cwp	355	o	16	2229
Cranbrook	Brt	329	c	16	2429
Cummins Range	REE	345	u	7	4359
Dalgaranga	Gr	329	u	8	2342
Dampier	Salt	130	o	3	2256
Dandaragan	Ph	329	u	16	2036
Dardanup	HMS	502	u	17	2031
Dawesville	Lmst	480	o	17	2032
Denison	Lmst	108	o	8	1839
Dongara	Lmst	502	o	8	1839
Donnelly River	Gr	329	u	16	2029
Donnybrook	Bs	141	o	17	2030
Dooka	Gyps	297	o	8	1839
Drydens Find	Bs	138	u	20	3136
Ellenbrook	Cy	295	o	17	2134
Eneabba North	HMS	394	o	16	1938
Eneabba West	HMS	394	o	16	1938
Exmouth	Lmst	162	o	2	1754
Fairfield	Bs	256	u	1	3962
Forrest Beach	HMS	79	u	17	1930
Fraser Range	Bs	175	c	19	3433
Frome Rocks	Salt	519	u	1	3661
Gabbin	Cyk	196	u	16	2436
Gabys Peak	Diat	405	o	16	2036
Gidgegannup Hill	Cy	376	o	17	2134
Gin Gin	Svs	401	c	16	2035
Gingin	HMS	502	u	16	2035
Glen Forrest	Cyk	329	c	17	2134
Gnangara	Svs	401	c	17	2034
Gordon Inlet	HMS	159	u	16	2729
Greenbushes	Cyk	432	o	17	2130
Guilderton	Lmst	31	o	16	1935
Gwambygine	Bs	481	o	16	2234
Gwindinup	HMS	79	u	17	2030
Happy Valley	HMS	502	u	17	2030
Hassell Beach	HMS	79	u	16	2528
Hawkstone Creek	HMS	406	u	1	3864
Herne Hill	Cy	295	o	17	2134
Hines Hill	Gyps	47	o	16	2535
Hope Valley	Bs	480	o	17	2033
Hopelands	HMS	79	u	17	2033
Israelite Bay	HMS	422	u	19	3630
Jandakot	Svs	387	o	17	2033
Jangardup	HMS	79	o	16	2029
John Galt	REE	55	u	1	4563
Jouerdine	Qtz	427	c	16	2536
Jubuk	Cyk	447	c	16	2433
Jurien	HMS	253 463	c	16	1937
Jurien Bay North	Gyps	512	o	16	1937
Jurien North	Lmst	208	o	16	1937
Kalannie	Salt	328	o	16	2337
Kamballup	Bs	171 285	u	16	2428
Kamballup North	Gyps	178	c	16	2528
Karlgarin	Bs	69 140	c	16	2632
Karloning	Fel	233	c	16	2536
Karratha Stone	Bs	305	o	3	2255
Kellerberrin	Gyps	410	c	16	2434
Kemerton	Svs	241 432 465	o	17	2031

Site	Commodity	Company	Stage	Map	Ref.
Kimberley Granite	Bs	289	c	1	3863
Kondinin	Gyps	126	c	16	2532
Kongorow Pool	Mica Brl	329	u	1	3863
Koombana Bay	HMS	329	c	17	2031
Koorda	Gyps	143	c	16	2336
Koorda Northwest	Gyps	143	c	16	2336
Kwolyin	Bs	329	u	16	2434
Lake Biddy	Salt	203	o	18	2631
Lake Brown	Gyps	207	o	16	2535
Lake Camm	Gyps	292	c	18	2832
Lake Campion	Gyps	206	c	16	2535
Lake Chandler	Alu	385 488	u	16	2535
Lake Clifton	Bs	23	o	17	2032
Lake Clifton	Lmst	480	o	17	2032
Lake Cobham	Gyps	203	c	16	2731
Lake Cowan	Gyps	20	o	20	3233
Lake Deborah East	Salt	486	o	18	2736
Lake Goorly	Gyps	78	o	16	2338
Lake Gulson	Gyps	255	o	18	2732
Lake Hillman	Gyps	450	o	16	2337
Lake Lefroy	Salt	329	c	20	3235
Lake MacLeod	Gyps	130	o	2	1649
Lake MacLeod	Salt	130	o	8	1649
Lake Magenta	Dol	203	c	16	2731
Lake McDermott	Gyps	329	c	16	2436
Lake Muir	Cwp	362	o	16	2228
Lake Nerramyne	Cya	230	o	8	1942
Lake Perkolilli	Gyps	329	c	20	3236
Lake Seabrook	Gyps	207	c	18	2836
Lake Surprise	Cwp	268	u	16	2228
Lake Tamworth	Cwp	177	u	17	2033
Lake Tay	Gyps	419	o	19	3031
Lake Wallambin	Gyps	287	c	16	2436
Lake Yindarigooda	Py	329	u	20	3236
Lancelin	Lmst	493	c	16	1935
Langey Crossing	Ph	329	u	1	3662
L'Haridon Bight	Lmst	62	o	8	1645
Londonderry	Fel Mica	114	u	20	3135
Loongana	Lmst	10	o	19	4336
Maidment	HMS	79	o	17	2030
Mandurah	Lmst	240	o	17	2033
Manjimup	Bs	329	c	16	2129
Marchagee	Tlc	233	u	16	2137
Meentheena	Fl Pb	329	u	7	2955
Melaleuca Park	Cwp	329	c	17	2034
Mindijup	Svs	465 466	o	16	2528
Minninup	HMS	79	c	17	2031
Moore River	Lmst	272	o	16	2035
Moorine Rock	Gyps	198	c	18	2735
Mt Barker East	Bs	445	c	16	2428
Mt Burges	Svs	508	o	20	3136
Mt Edward	Bs	30	o	19	3330
Mt Gould	MIO	233	o	8	2346
Mt Jowlaenga	Bs	67	c	1	3562
Mt Kokeby	Cyk	329	c	16	2233
Mt Seabrook	Tlc	114 234	o	8	2446
Mt Walker	Gyps	329	c	16	2633
Mt Weld	Ph	124	u	15	3440
Mt Weld	REE	24	u	15	3440
Muchea	Cy	296	o	16	2135
Muchea	HMS	502	u	16	2035
Mukinbudin	Fel	114	o	16	2536
Mukinbudin Northeast	Gyps	42	c	16	2536
Mullalyup	Mica	329	c	17	2030
Mungari	Bs	441	u	20	3136
Munglinup	Ve	477	c	19	3030
Munglinup	Gr	432	u	19	3030
Namban	Bs	359	o	16	2137
Nanamoolan	Cy	112	u	16	2134
Neerabup	Bs	271	o	17	2034
Ninghan	Gyps	80	c	16	2238
North Capel	HMS	502	c	17	2030
North Pole	Brt	444	c	5	2755
Nowergup	Bs	271	o	17	2034
Ocean Beach	Lmst	506	o	16	2327
Old Bunbury Road	Cy	295	o	17	2032
Onslow	Salt	341	o	2	1954
Ord Range	Bs	476	o	2	2757
Paraburdoo	Brt	329	u	2	2351
Peron	Gyps	34 106	u	8	1546
Piawaning	Cy	104	c	16	2136

Site	Commodity	Company	Stage	Map	Ref.
Pink Lake	Salt	98	c	19	3230
Pippingarra	Fel Mica	114	c	2	2656
Port Gregory	Grt	41 213	o	8	1741
Port Hedland	Salt	84	o	2	2657
Postans	Lmst	265	o	17	2033
Red Hill	Cy	296	o	17	2134
Scaddan	Gyps	224	c	19	3231
Scott River	HMS	79	u	16	1929
Seabird	Bs	88	u	16	2035
Shark Bay	Gyps	34 106	c	8	1545
Sheela Bore	Bs	138	u	2	2050
Smiths Beach	HMS	329	u	16	1930
Sparkes	Cyk	397	u	16	2432
Speewah	Fl Brt Pb	57 152	u	1	4465
Stennets Lake	Gyps	258	o	19	3232
Stratham	HMS	502	c	17	2030
Tambellup	Cyk	329	u	16	2429
Three Springs	Tlc	508	o	8	2038
Toodyay	Bs	360	o	16	2134
Toodyay	Cy	296	o	16	2134
Tuart Road	Bs	496	c	16	2035
Tutunup	HMS	502	u	17	2030
Upper Swan	Cy	376	o	17	2134
Useless Loop	Salt	34 106 308	o	8	1545
Wagerup	HMS	502	u	17	2032
Wambyn	Bs	99	u	16	2234
Waroona	HMS	239	c	17	2032
Waroona North	HMS	79	c	17	2032
Waroona South	HMS	79	o	17	2032
Watheroo	Lmst	498	c	16	2037
Wattleup	Bs	181	o	17	2033
Wenmillia Dam	Cyk	448	u	8	2041
Wilgie Mia	Och	114	c	8	2444
Wilyabrup	Bs	102	u	16	1930
Winemaya Spring	Spt	498	o	16	2037
Witchcliffe	HMS	48	u	16	1929
Wittenoom	Asb	329	c	2	2553
Wonnerup	HMS	394	c	17	1930
Woogenellup	Spon	449	u	16	2428
Woolundra	Gyps	329	c	16	2434
Wundong Dam	Cy	450	o	17	2133
Wylloo	Bs	329	u	2	2152
Yangibana	REE	329	u	2	2150
Yannery Hills	Bs	43	o	3	2255
Yarloop	HMS	79	u	17	2032
Yarra Yarra Lakes	Gyps	329	c	16	2038
Yeal Swamp	Diat	405	u	16	2035
Yoganup	HMS	502	c	17	2030
Yoganup Ext.	HMS	502	o	17	2030
Yoganup North	HMS	502	o	17	2031



## IRON

Bakers South	Fe	214 397 514	u	2	2751
Balmoral	Fe	302	u	2	2155
Beasley River	Fe	210	u	2	2352
Blue Hills	Fe	260 352	c	8	2239
Brockman No. 2	Fe	210	o	2	2353
Bungalbin	Fe	197	u	8	2837
Bungaroo Creek	Fe	400	u	2	2154
Cane River	Fe	302	u	2	2053
Channar	Fe	100 210	o	2	2451
Chichester Range	Fe	49	u	2	2753
Cockatoo Island	Fe	17 370	o	1	3665
Coondiner	Fe	214	u	6	2851
Deepdale J	Fe	308 327 333	o	2	2154
Deepdale K	Fe	308 327 333	o	2	2154
Ferrogully	Fe	49	c	6	2951
Giles Mini	Fe	214 397 514	u	2	2751
Kalgan Creek	Fe	214	u	6	2851
Kangeenarima Creek	Fe	210	u	2	2453
Kennedy Gap	Fe	49 309	o	2	2956
Koodaideri	Fe	210	u	2	2752
Koolan Island	Fe	49	c	1	3665
Koolanooka	Fe	260 352	c	8	2139
Koolyanobbing	Fe	17 370	o	18	2836
Marandoo	Fe	397	o	2	2552
Marrillana Creek	Fe	49	o	2	2752
Metawandy	Fe	210	u	2	2252
Middle Robe River	Fe	83 273 378	c	2	2154
Mining Area C	Fe	49 309	u	2	2652



Site	Commodity	Company	Stage	Map	Ref.
Mt Farquhar	Fe	210	u	2	2253
Mt Goldsworthy	Fe	49 309	c	2	2857
Mt Hale	Fe	435	u	8	2345
Mt Pyrtton	Fe	210	u	2	2354
Mt Wall	Fe	210	u	2	2252
Mt Whaleback	Fe	49 309	o	6	2851
Newman 23	Fe	49 309	o	6	2851
Newman 25	Fe	49 309	o	6	2851
Newman 29	Fe	49 309	o	6	2851
Nimingarra	Fe	49 309	c	2	2957
Ophthalmia Range	Fe	397	u	6	2851
Paraburdoo	Fe	210	o	2	2451
Pig Iron Hill	Fe	49	u	6	2951
Pompeys Pillar	Fe	329	u	1	4564
Rhodes Ridge	Fe	214 397 514	u	6	2751
Shay Gap	Fe	49 309	c	2	2957
Shovelanna Hill	Fe	49 309	c	6	2951
Silvergrass	Fe	210	u	2	2353
Southdown	Fe	459	u	16	2628
Tallering Peak	Fe	260 352	u	8	2041
Tom Price	Fe	210	o	2	2452
Turner Syncline	Fe	210	u	2	2452
Walkalina	Fe	210	u	2	2453
Weeli Wolli	Fe	49 309	u	2	2751
Weld Range	Fe	260	u	8	2444
West Angelas	Fe	400	u	2	2651
Western Ridge	Fe	49 309	u	6	2851
Wittenoom	Fe	214	u	2	2553
Yandicoogina	Fe	515	u	2	2752
Yarrie	Fe	49 309	o	2	2956



## PRECIOUS METALS

Abbotshall	Au	29	c	20	3233
Admiral	Au	116	c	15	3139
Albury Heath	Au	187	u	10	2644
Alicia	Au	97 142 275 482	c	15	3240
All Nations	Au	8	u	2	2954
Alliance	Au	435	c	10	2543
Allons	Au	226	c	10	2544
Anchor	Au	303	u	13	3342
Apollo	Au	226	c	9	2847
Apollo Hill	Au	166	u	15	3239
Arthur Dam	Au	91	c	20	3137
Au 81	Au	156 318	u	2	2954
Aurora	Au	10	c	19	2837
Bacchus	Au	391	c	20	3035
Badgebup	Au	238	c	16	2430
Bailey Island	Au	435	c	10	2544
Baker	Au	73	u	20	3135
Balagundi	Au	59	c	20	3236
Ballarat – Last Chance	Au	135	o	20	3236
Bamboo Creek	Au	215	c	2	2956
Baneygo	Au	145 245	c	15	3342
Bannockburn	Au	32	o	14	3041
Barbara–Surprise	Au	10	c	20	3136
Bardoc	Au	13	u	20	3137
Barkers	Au	195	o	20	3136
Barnicoat	Au	432	c	15	3340
Barra	Au	226	u	9	2847
Barrambie Range	Au	4	c	8	2743
Barton	Au	200	o	2	3045
Barton	Au	329	u	14	2954
Bartus	Au	223	o	12	2441
Barwidgee	Au	200	c	14	3044
Bayleys Reward	Au	220 306	c	20	3136
Beasley Creek	Au	135 294	c	15	3340
Beatons Creek	Au	488	c	2	2954
Beete	Au	329	c	19	3232
Bell Chambers	Au	319	u	8	2741
Bellbird	Au	227	u	20	3135
Bellevue	Au	226	c	14	3042
Bent Tree	Au	91	c	20	3137
Bertha Peak	Au	267	u	1	4461
Big Bell	Au	330	o	11	2443
Big Bull	Au	53	c	20	3235
Big Four	Au	329	u	20	3137
Big Tree	Au	324	u	7	3354
Bills Find	Au	200	c	14	3044
Binduli	Au	123	o	20	3136
Birthday	Au	174	o	18	2636

Site	Commodity	Company	Stage	Map	Ref.
Black Swan	Au	330	u	11	2443
Blue Bar	Au	70	c	2	2855
Blue Funnel	Au	436	c	20	3136
Blue Spec	Au	61	c	2	2954
Blue Vein	Au	273	o	18	2833
Bluebell	Au	63	c	20	3136
Bluebird	Au	435	c	10	2544
Bobby Shaft	Au	511	c	12	2441
Boddington	Au Cu	3 324 330	o	16	2132
Bombay	Au	154 499	o	8	2342
Bonnievale	Au	281	u	20	3136
Boomerang	Au	354	c	10	3440
Boomerang	Au	435	c	15	2543
Boorara	Au	166	u	20	3236
Bottle Creek	Au	333	c	13	2939
Boudie Rat	Au	32	o	13	3039
Bounty	Au	273	o	18	2833
Bourkes Find	Au	435	u	10	2644
Brandy Hill	Au	248	u	8	2140
Bream	Au	226	u	9	2847
Brilliant	Au	220 306	c	20	3136
British Hill	Au	1 317	c	18	2834
British King	Au	250	c	14	3142
Broad Arrow	Au	195	o	20	3137
Broads Dam	Au	40	o	20	3136
Bronco	Au	432	c	18	2834
Bronzewing	Au	200	o	14	3143
Bulchina	Au	81 472	u	8	2741
Bull Oak	Au	152 220	c	8	2741
Bullabulling	Au	391	c	20	3036
Bulletin	Au	200	o	14	2944
Bullseye	Au	358	o	16	2738
Bulong	Au	182 383	u	20	3236
Burgess Find	Au	192	c	16	2634
Burtville East	Au	399	o	15	3440
Butcher Well	Au	316 432	c	15	3339
Butchers Creek	Au	374	c	1	4461
Caledonian	Au	435	c	10	2544
Callion	Au	115	c	20	3037
Calyerup Creek	Au	27 301	u	16	2730
Cams	Au	32	o	14	3042
Carbine	Au	91	c	20	3037
Cardiff Castle	Au	377	c	20	3234
Carlinga Well	Au	402	u	8	2041
Carnage	Au	37	u	20	3037
Carnation	Au	457	o	8	2439
Carosue	Au	497	u	20	3337
Cashmans Bore	Au	176	u	8	2646
Castle Hill	Au	500	c	20	3136
Catherwood	Au	13	c	20	3136
Caustons	Au	500	c	11	2543
Cave Rocks	Au	93	u	20	3235
Centenary	Au	195	o	20	3136
Centenary	Au	226	o	14	3142
Chalice	Au	182 183 391	o	20	3234
Challenge–Swordsman	Au	391	o	20	3234
Challenger	Au	35	c	14	3042
Channings	Au	226	u	14	2844
Cheritons	Au	26	c	18	2834
Childe Harold	Au	135 366	c	15	3340
Christmas Creek	Au	127	u	7	4359
Christmas Well	Au	170	u	15	3240
City of Melbourne	Au	282	c	8	2241
Cockburn	Au	35	o	14	3043
Coco	Au	91	o	20	3137
Comet	Au	215	c	11	2855
Comet	Au	500	c	2	2542
Comet Eclipse	Au	232 351	u	18	2735
Conqueror	Au	508	c	20	3235
Copenhagen	Au	215	c	2	2855
Copperfield	Au	388	c	13	2939
Copperhead	Au	432 472	c	18	2736
Corinthia	Au	391	c	18	2735
Cork Tree Well	Au	329	c	15	3341
Cornishman	Au	432 472	o	18	2735
Cosmopolitan	Au	116	c	15	3139
Cowboy	Au	61	c	2	2954
Coxs Find	Au	156	c	15	3341
Craigiemore	Au	432	c	15	3340
Crusader	Au	508	o	14	2941
Daisy–Milano	Au	326	c	20	3235



Site	Commodity	Company	Stage	Map	Ref.
Darjeeling	Au	273	o	18	2833
Dark Horse	Au	91	c	20	3137
Darlot	Au	226	o	14	3142
Daughters of Erin	Au	438	c	20	3234
Dawns Hope	Au	323	o	20	3235
Day Dawn	Au	435	u	11	2443
Deakin	Au	200	o	14	3045
Deep South	Au	348	c	16	2338
Deliverer	Au	508	c	14	2941
Donnybrook	Au	329	u	17	2030
Double A	Au	58	c	14	3141
Dragon	Au	35	c	14	3142
Dreadnought	Au	288 290	c	20	3136
Dry Creek	Au	434	c	1	4562
Duchess of York	Au	212	u	20	3335
Duffers	Au	16	c	1	4461
Dulcie	Au	432	c	18	2834
Dunns Eight Mile	Au	173	c	20	3036
Eaglehawk	Au	283	c	11	2543
Earl Grey	Au	273	o	18	2833
Eastman Bore	PGE	519	u	7	4260
Edjudina	Au	348	c	15	3338
Edwards Find	Au	432	c	18	2734
Eidelweiss	Au	444	c	2	2854
Electrum	Au	44 167	c	18	2735
Ellen Jean	Au	356	c	20	3136
Elvire River	Au	329	u	1	4561
Empress	Au	264	c	12	2441
Emu	Au	508	c	14	3041
Ennuin	Au	68	u	18	2636
Eureka	Au	243	c	20	3137
Evanston	Au	464	u	8	2738
Exile	Au	74	u	15	3437
Fairyland	Au	226	o	14	3041
Famous Blue	Au	245	u	13	3342
Federal City	Au	435	c	10	2543
First Hit	Au	195 248	c	15	3138
Flushing Meadows	Au	147	u	14	3044
Forgotten Four	Au	471	c	15	3140
Four T	Au	343	c	2	1952
Francis Furness	Au	146	c	18	2835
Franks Towner	Au	223	o	12	2441
Fraser	Au	432 472	c	18	2735
Gabanintha	Au	435	c	10	2644
Galtee More	Au	223	c	12	2441
Genesis	Au	226	o	14	2942
Ghost Crab	Au	324 347	o	20	3135
Gibraltar	Au	391	c	20	3035
Gibraltar	Au	435	c	10	2544
Gidgee	Au	35	o	8	2743
Gidji	Au	195 413	u	20	3136
Gidji Dam	Au	66 383	c	20	3136
Gilbays	Au	154 499	o	8	2342
Gilt Edge	Au	381	c	11	2543
Gimlet South	Au	91	c	20	3137
Glasson	Au	115	c	20	3037
Glendower	Au	391	c	18	2735
Globe	Au	226	c	10	2544
Gnows Nest	Au	318	u	8	2240
Goanna Patch	Au	244	u	14	3141
Gold Hill	Au	147	c	15	3240
Golden Bar	Au	313	c	20	3136
Golden Chief	Au	324 347	c	20	3235
Golden Delicious	Au	3	u	15	3339
Golden Funnell	Au	91	c	20	3136
Golden Gate	Au	330	u	11	2443
Golden Hope	Au	324 347	c	20	3235
Golden Horn	Au	329	u	13	3038
Golden Kilometre	Au	91	c	20	3136
Golden Pig	Au	432 472	o	18	2735
Golden Ridge	Au	323	o	20	3236
Golden Spec	Au	61	c	2	2954
Golden Valley	Au	135 333	c	20	3236
Golden Wings	Au	154 499	o	8	2342
Goongarrie	Au	248	c	20	3137
Gorge Creek	Au	368 404	u	2	2251
Gourdis	Au	200	c	14	3044
Grace Darling	Au	383	c	20	3137
Grafters	Au	452	u	20	3137
Granny Smith	Au	135 366	o	15	3340
Granny Venn	Au	312	u	15	3138

Site	Commodity	Company	Stage	Map	Ref.
Grants Patch	Au	189	c	20	3137
Great Banjo	Au	228	c	15	3338
Great Bingen	Au	150 167	c	18	2736
Great Eastern	Au	226	o	14	3041
Great Fingall	Au	330	o	11	2443
Great Hope	Au	89	o	20	3235
Great Lady	Au	91	c	20	3137
Great Ophir	Au	116	c	20	3037
Great Victoria	Au	432	c	18	2834
Griffins Find	Au	36	c	16	2531
Grosmont	Au	436	c	20	3135
Gullewa	Au	3 495	c	8	2140
Gum Creek	Au	220	c	8	2843
Hammer Hill	Au	329	c	15	3440
Hangmans	Au	332	u	7	4360
Hannan South	Au	123	c	20	3236
Happy Jack	Au	200	o	14	2944
Harbour Lights	Au	432	c	15	3140
Harlequin	Au	94	o	20	3233
Harrys Hill	Au	66	u	19	3435
Hatters Hill	Au	109 229 432	c	19	2832
Haveluck	Au	226	c	10	2644
Hawk Nest Well	Au	462	c	15	3340
Hawkins Find	Au	315	c	20	3137
Hedges	Au	3 324 330	o	16	2132
Henning	Au	91	o	20	3136
Herbert Well	Au	329	c	14	3044
Hibernian	Au	150	c	8	2448
Higginsville	Au	391	o	20	3234
Hill 50	Au	223	o	12	2441
Hill Proprietary	Au	329	c	15	3240
Hogans	Au	433	u	20	3235
Holleton	Au	395	c	18	2734
Homeward Bound	Au	190	u	2	3240
Homeward Bound	Au	329	u	15	2855
Hootanui	Au	488	u	13	3242
Hopes Hill	Au	391	c	18	2735
Hornet	Au	348	c	8	2338
Hronsky	Au	10	c	15	3235
Hronsky	Au	316 432	c	20	3339
Ida H	Au	432	c	15	3340
Ingliston	Au	226	c	10	2644
Innuendo	Au	135 294	u	15	3340
Intrepide	Au	508	o	20	3235
Irene Betty	Au	209 488	c	18	2735
Iron King	Au	132	u	14	3140
Iron Stirrup	Au	277	c	5	2655
Island View Hill	Au	263	c	20	3234
Jack Ryan	Au	435	c	10	2543
Janet Ivy	Au	235 236	u	20	3136
Jasmine	Au	273	o	18	2833
Jasper	Au	432	o	15	3140
Jasper Hill	Au	139	c	15	3140
Jaurdi Hills	Au	118 464	u	20	3036
Jimblebar	Au	390	u	6	2951
Jimperding	Au	252	u	16	2134
Johnston Range	Au	221	c	8	2738
Joyners Find	Au	226	u	14	2844
Jubilee	Au	135 366	u	8	3339
Jubilee	Au	226 333	c	1	2646
Jubilee	Au	374	c	15	4461
Judges Find	Au	329	c	8	2546
Jules Reward	Au	505	c	20	3035
Julie	Au	344	u	8	2339
Jumbulyer Hill	Au	311	c	12	2441
Junction	Au	508	o	20	3235
Jundee-Nimary	Au	200	o	14	3045
Jungle Well	Au	32	o	14	3041
Jupiter	Au	2 226	c	15	3340
Just in Time	Au	371	u	15	3340
Kaltails	Au	330	o	20	3236
Kangaroo Bore	Au	489	u	15	3339
Kanowna Belle	Au	135 333	o	20	3236
Karonie	Au	66	o	19	3435
Kathleen Valley	Au	247	c	14	3042
Keil	Au	200	c	14	3045
Keilor	Au	226	c	9	2847
Keringal	Au	135 366	c	15	3440
King	Au	116	c	15	3139
King Brown	Au	39 197 415	u	16	2737
King of Creation	Au	72	c	15	3341



Site	Commodity	Company	Stage	Map	Ref.
Kingfisher	Au	35	c	8	2743
Kintore	Au	353	u	20	3136
Kirkalocka	Au	432	u	8	2440
Klondyke	Au	277	u	2	2855
Kohinoor	Au	435	c	10	2543
Kookaburra	Au	189 454	u	7	4658
Kundana	Au	195	c	20	3136
Kundip	Au	363	c	19	2930
Kurara	Au	435	c	10	2543
Kurrawang	Au	195	c	20	3136
Labouchere	Au	357	c	8	2547
Lady Bountiful	Au	116	c	20	3136
Lady Bountiful Ext.	Au	91	c	20	3137
Lady Gladys	Au	116	c	13	3038
Lady Harriet	Au	195 248	o	15	3138
Lady Marie	Au	211	u	20	3136
Lady Robinson	Au	10	c	20	3135
Lady Smith	Au	329	u	15	3140
Lady Susan	Au	147	u	15	3240
Lake Cowan	Au	3	u	20	3234
Lalla Rookh	Au	215	c	5	2755
Lancefield	Au	135 294	c	15	3340
Landed at Last	Au	316 432	u	15	3339
Lawlers	Au	226	o	14	3041
Leonardo	Au	471	u	15	3140
Lights of Israel	Au	116	o	20	3037
Linden	Au	190	u	15	3339
Lindsays	Au	220 306	c	20	3136
Lindsays Find	Au	437	c	20	3237
Linger and Die	Au	329	c	14	3140
Little Doris	Au	429	u	15	3341
Livingstones Find	Au	274	u	8	2446
Lotus	Au	35	o	14	3043
Loudens Patch	Au	509	u	4	2456
Lowlands	Au	96	u	14	3143
Lubra Queen	Au	348	c	15	3139
Lyndon	Au	276	c	2	1951
Magdala	Au	321	c	20	3037
Main Hill	Au	277	c	5	2655
Malcolm	Au	155 411	c	15	3240
Maranoa	Au	329	u	15	3138
Marda	Au	39 197 415	u	16	2737
Mareast	Au	226	c	9	2847
Maria	Au	32	u	14	3042
Marion Martin	Au Cu Ag	329	u	19	2930
Marvel Loch	Au	432	o	18	2735
Mary River	Au	329	c	1	4461
Maxwells	Au	182 383	c	20	3335
Maybell	Au	29	c	20	3233
McGraths	Au	432	u	15	3140
McPhersons Reward	Au	372	c	20	3136
McTavish	Au	38	u	15	3139
Mertondale	Au	28	c	15	3240
Mertondale 5	Au	28	c	14	3240
Messengers Patch	Au	293	c	8	2240
Mickey Doolan	Au	226	c	10	2644
Middle Creek	Au	86	c	2	2954
Mikado	Au	163	c	15	3440
Mindoolah	Au	329	c	8	2344
Minyari Hill	Au	324	u	7	3355
Miranda	Au	32	c	14	3042
Mirror	Au	408	c	20	3235
Mistletoe	Au	456	u	20	3135
Moonlight	Au	200	o	14	2944
Mosquito Creek	Au	179	c	7	2954
Mossbecker	Au	247	u	14	3042
Mt Pool	Au	200	u	14	2944
Mt Bradley	Au	350	c	1	4461
Mt Charlotte	Au	226 330	o	20	3136
Mt Clement	Au Ag	452	u	2	2152
Mt Clifford	Au	54	u	14	3141
Mt Corlac	Au	195	c	20	3137
Mt Dimer	Au	458	c	19	2837
Mt Dimer	Au	517	c	19	2837
Mt Dockrell	Au	259	c	7	4360
Mt Fingall	Au	330	o	11	2443
Mt Fisher	Au	226	c	14	3144
Mt Gibson	Au	348	c	16	2338
Mt Henry	Au	29	c	20	3233
Mt Holland	Au	348	c	18	2833
Mt Joel	Au	200	u	14	3143

Site	Commodity	Company	Stage	Map	Ref.
Mt Korong	Au	475	u	15	3240
Mt Martin	Au	323	c	20	3235
Mt Marvin	Au	2 226	c	15	3340
Mt Monger	Au	182 383	c	20	3236
Mt Morgans	Au	2 226	c	15	3340
Mt Mortimer	Au	246	c	2	2251
Mt Mulgine	Au	182	u	8	2239
Mt Olympus	Au	22 277 423	o	2	2451
Mt Padbury	Au	121	u	8	2546
Mt Pleasant	Au	226 333	c	8	2646
Mt Rankin	Au	75	c	18	2735
Mt Redcliffe	Au	139	c	14	3241
Mountain Queen	Au	432	o	18	2735
Mugga King	Au	160 361	u	8	2140
Mulga Queen	Au	329	u	13	3342
Mulgabbie	Au	103 518	c	15	3337
Mulgarrie	Au	135	o	20	3237
Mulwarrie Central	Au	227	c	20	3037
Munarra Gully	Au	286	c	10	2544
Munni Munni	PGE Au	200 219	u	3	2255
Mystery Mint	Au	123 220	c	20	3136
Nambi	Au	28	c	14	3241
Nannine	Au	435	c	10	2544
Nathans	Au	357	c	8	2547
Nelsons Fleet	Au	90	u	20	3235
Nevoria	Au	432	o	18	2834
New Bellevue	Au	101	c	20	3137
New Celebration	Au	324 347	c	20	3235
New Chum	Au	223	o	12	2441
New Holland	Au	226	o	14	2942
New Mexico	Au	172 416	u	20	3037
New Year Bore	Au	45	o	8	2742
Niagara	Au	116	c	15	3139
Nicholsons Find	Au	374	c	1	4361
Nickol River	Au	110	u	3	2256
Normay	Au	215	c	5	2755
Norris	Au	436	c	20	3135
North Royal	Au	94	c	20	3233
North Shaw	Au	215	c	5	2755
North Well	Au	32	o	14	3041
Northern Lady	Au	91	c	20	3137
Northlander	Au	165	u	20	3136
Nyborgs Find	Au	329	c	20	3037
Oberwyl	Au	190	u	13	3039
Old Perculiar	Au	145 245	c	15	3342
Omega	Au	35	o	8	2744
Ora Banda	Au	91	o	20	3136
Orchin	Au	508	c	20	3235
Orient Well	Au	116	c	9	3139
Orient Well	Au	226	u	15	2847
Orinda	Au	262	u	20	3137
Orion	Au	348	c	16	2338
Oroya	Au	220	o	8	2742
Paddington	Au	195	o	20	3137
Paddys Flat	Au	226	c	10	2644
Palm Springs	Au	137 425	c	1	4461
Panglo	Au	195	o	20	3136
Pantomine	Au	510	u	12	2441
Panton Sill	PGE Cr	180 219	u	1	4462
Parker Range	Au	259 432	c	18	2834
Parmelia	Au	35	c	14	3042
Patch Dam	Au	418	u	20	3236
Patricia	Au	74	c	15	3438
Patricia Jean	Au	220 306	c	20	3136
Paulsen	Au	452	u	2	2152
Paynesville	Au	507	u	8	2641
Peak Hill	Au	226 333	c	8	2646
Pelican	Au	226	c	9	2847
Peninsula	Au	Unknown	c	20	3234
Penny West	Au	33 319 379	c	8	2640
Pennys Find	Au	123 134	u	20	3236
Perch	Au	226	c	9	2747
Pernatty	Au	324 347	o	20	3235
Phar Lap	Au	226	c	10	2644
Phillips Find	Au	38	c	20	3036
Picnic	Au	266	u	15	3240
Pilot	Au	472 497	c	18	2735
Pinjin	Au	74	c	15	3437
Pinnacles	Au	500	c	11	2542
Pinnacles	Au	329	u	20	3337
Pitman	Au	123	c	20	3136



Site	Commodity	Company	Stage	Map	Ref.
Plutonic	Au	226	o	9	2747
Pomme D'or	Au	329	c	14	2944
Porcupine	Au	187	u	8	2339
Porphyry	Au	348	c	15	3338
Poseidon	Au	391	c	20	3234
Premier	Au	13	c	20	3136
Price	Au	226	c	9	2847
Prickley	Au	226	c	9	2847
Prohibition	Au	226	c	10	2644
Prospero	Au	186	u	15	3140
Purple Patch	Au	15	u	20	3336
Puzzle	Au	116	c	15	3239
Pykes Hollow	Au	504	c	15	3339
Pythagorus	Au	226	c	9	2847
Quarters	Au	91	o	20	3136
Quartz Hill	Au	225 428	c	2	2555
Quasar	Au	223	o	12	2441
Queen Lapage	Au	123	c	20	3236
Queen of the May	Au	316 432	u	15	3339
Racetack	Au	91	c	20	3136
Radio	Au	194 432	c	18	2736
Raffertys Patch	Au	132	u	8	2741
Rand	Au	435	c	10	2543
Randalls	Au	182 383	c	20	3335
Randles Find	Au	474	u	14	3041
Rapier	Au	500	c	11	2543
Razorback	Au	273	o	18	2833
Red Flag	Au	446	o	15	3340
Red October	Au	432	o	15	3339
Red White and Blue	Au	29	c	20	3233
Redbrook	Au	193 453	c	15	3338
Redoutable	Au	508	c	20	3235
Reichelt Find	Au	145 245	c	15	3341
Reids Ridge	Au	185	c	8	2339
Revenge	Au	508	c	20	3235
Riverina	Au	201	c	13	3038
Ronstan	Au	164	u	8	2339
Rose of England	Au	291	u	11	2443
Rosella	Au	226	u	9	2847
Rosemont	Au	145 245	u	15	3342
Rothsay	Au	95 231	c	8	2239
Round Dam	Au	116	c	20	3037
Rowes Find	Au	248	u	19	3436
Rubicon	Au	435	c	11	2443
Ruby Queen	Au	223	o	12	2441
Ruby Queen	Au	374	c	1	4461
Rumour	Au	135 294	u	15	3340
Salmon	Au	226	c	9	2847
Samphire	Au	323	o	20	3235
Sand King	Au	186	c	20	3037
Sand Queen	Au	412	u	15	3138
Sandpiper	Au	189 454	u	7	4658
Santa Ana	Au	508	o	20	3235
Savannah	Au	303	u	15	3140
Scotia	Au	94	o	19	3233
Second Fortune	Au	215	c	15	3339
Secret Creek	Au	382	c	2	2350
Sharks Gully	Au	461	c	2	2855
Shillington	Au	220	c	8	2741
Sirdar	Au	196	c	20	3237
Six Mile	Au	508	c	20	3236
Skyhawk	Au	226	c	9	2847
Slav Well	Au	96	u	14	3144
Snook	Au	35	o	8	2743
Snowdrop	Au	9	o	18	2834
Soanesville	Au	329	c	2	2755
Sons of Gwalia	Au	432	o	15	3140
South Delta	Au	508	c	20	3235
South Emu	Au	435	c	10	2543
South Junction	Au	435	c	10	2544
Southern Star	Au	109 432	c	18	2834
Spargos Reward	Au	10	c	20	3135
Spargoville	Au	10	c	20	3235
Star	Au	223	o	12	2441
Star of Mangaroon	Au	291 488	c	2	2050
Starlight	Au	357	o	8	2547
Stirling	Au	248 312	u	14	3143
Strzelecki	Au	195	o	20	3136
Success	Au	35	c	14	3042
Sunrise	Au	135 366	o	15	3339

Site	Commodity	Company	Stage	Map	Ref.
Sunrise Dam	Au	3	o	15	3339
Super Pit	Au	226 330	o	20	3236
Swincers	Au	284	u	15	3341
Sydney Mint	Au	340	o	20	3136
Talbot North	Au	195	o	20	3137
Talga Talga	Au	133	c	2	2855
Tampia Hill	Au	325 331	u	16	2533
Tarmoola	Au	348	o	15	3140
Teddy Bear	Au	273	o	18	2833
Telfer	Au	324	o	7	3354
The Mount	Au	314	o	20	3234
Theil Well	Au	189	c	20	3037
Three Mile Hill	Au	220 306	c	20	3136
Tindals	Au	220 306	c	20	3136
Toedter	Au	35	o	8	2744
Tower Hill	Au	139	c	15	3140
Toweranna	Au	4 71 451	u	4	2456
Trafalgar	Au	413	c	20	3236
Transfind	Au	464	c	20	3336
Transvaal	Au	2 226	c	18	3340
Transvaal	Au	432	c	15	2735
Trident	Au	226	c	9	2847
Triple P	Au Ag	226	c	9	2847
Triton	Au	435	c	10	2543
Trout	Au	226	u	9	2847
Tuart	Au	91	c	20	3136
Tuckabianna	Au	500	c	11	2543
Turn of the Tide	Au	435	c	10	2543
Turtle	Au	374	u	1	3963
Twin Hills	Au	191	c	15	3139
Twin Shafts	Au	220	c	8	2741
Two Boys	Au	38	c	20	3234
Two Dees	Au	303	u	15	3139
Ulysses	Au	129	u	15	3139
Victor Well	Au	329	u	15	3140
Victory	Au	218	u	14	3140
Victory-Defiance	Au	508	c	20	3235
Viking	Au	94	o	14	3233
Viking	Au	25 432	u	20	3141
Virgin Creek	Au	329	u	5	2755
Wadgingarra	Au	318	u	8	2241
Waihi	Au	116	o	20	3037
Wallaby	Au	135 366	u	15	3340
Wanganuie North	Au	435	u	10	2544
Wattle Dam	Au	329	c	20	3135
Websters Find	Au	72	u	15	3240
Wedge	Au	28	c	15	3340
Weerianna	Au	147 226 334	u	3	2356
Welcome	Au	223	c	12	2442
Wendy Gully	Au	195	o	20	3137
West End	Au	60 120	o	12	2441
Western Queen	Au	154 499	o	8	2342
Western Shaw	Au	329	c	2	2754
Westonia	Au	501	c	16	2635
Westralia	Au	2 226	c	15	3340
Whisper	Au	135 294	u	15	3340
White Foil	Au	300 304	u	20	3136
White Hope	Au	323	c	20	3235
White Horse	Au	91	c	20	3137
Wilga Hill	Au	426	u	15	3439
Wilgeena	Au	157 226	c	8	2646
Wilsons Patch	Au	107	u	14	3141
Wilthorpe	Au	357	c	8	2546
Wiluna	Au	200	c	14	2944
Wiluna South	Au	200	c	14	2944
Winddine Well	Au	330	c	8	2240
Wombat	Au	348	c	16	2338
Wombola	Au	123	c	20	3236
Woodcutters	Au	91	o	20	3137
Xanadu	Au	324 337	c	2	2451
Xmas	Au	10	o	20	3135
Yarawindah Brook	PGE	75	u	16	2135
Yilgarni Castle	Au	222	c	15	3338
Yilgarni Queen	Au	332 412	u	15	3338
Yilgarn Star	Au	109 432	o	18	2834
Youanmi	Au	33 319 379	c	8	2640
Yunndaga	Au	195 248	o	15	3138
Zoroastrian	Au	116	c	20	3137
Zuleika	Au	91	c	20	3136



# OWNER INDEX

<i>Code</i>	<i>Owner name</i>	<i>Code</i>	<i>Owner name</i>	<i>Code</i>	<i>Owner name</i>
1	Abador Gold NL	77	Butler RJ	153	Empire Oil and Gas NL
2	Abednego Nickel Ltd	78	Bywaters and Leeson	154	Equigold NL
3	Acacia Resources Ltd	79	Cable Sands Pty Ltd	155	Equinox Resources NL
4	Acclaim Exploration NL	80	Cail WM	156	Erlistoun Gold NL
5	Acclaim Uranium NL	81	Cambrian Resources NL	157	Esmeralda Exploration Ltd
6	ACI Resources Ltd	82	Capital Energy NL	158	Esso Australia Resources Ltd
7	Alcoa of Australia Ltd	83	Capricorn Resources Australia NL	159	Eucla Mining Ltd
8	All Nations Mining Co. Ltd	84	Cargill Australia Ltd	160	Euraust Mineral Development NL
9	Alva Investments Pty Ltd	85	Carnegie Minerals NL	161	Exmouth Limestone Pty Ltd
10	Amalg Resources NL	86	Carson EL	162	Exmouth Quarries and Contracting
11	Amity Oil NL	87	Carson MA	163	Exodus Minerals Ltd
12	Ampol Exploration Ltd	88	Cashdale Limestone Pty Ltd	164	Fehlberg B
13	AMX Resources NL	89	Celestina M	165	Felson Holdings Pty Ltd
14	Anaconda Nickel NL	90	Centamin Ltd	166	Fimiston Mining Ltd
15	Andjelkovic A	91	Centaur Mining and Exploration Ltd	167	Finders Gold NL
16	Anglo Australian Resources NL	92	Central Bore NL	168	Fitzgerald EM and EJ
17	Anshan Iron and Steel Complex	93	Central Kalgoorlie Gold Mines NL	169	Five Star Resources NL
18	Apache Ltd	94	Central Norseman Gold Corp. Ltd	170	Foale and Jodrell
19	Aplo Pty Ltd	95	Central West Gold NL	171	Fong Maurice
20	Aquacrete	96	Chartfield Ltd	172	Forrest MWP
21	Arc Energy NL	97	Chaytor MS	173	Foxton AJ
22	Arcadia Minerals Ltd	98	Cheetham Salt Ltd	174	Fradl R
23	Armstrong R	99	Chester RH	175	Fraser Range Granite NL
24	Ashton Mining Ltd	100	China Metallurgical Import and Export Corp.	176	Frontline Mining Pty Ltd
25	Astro Mining NL	101	Chitty CG	177	Fuller, Gibson, and Nylund
26	Audax Resources NL	102	Citywest Holdings Ltd	178	Furniss DMH
27	Auralla Resources NL	103	Civil and International (Aust.) Pty Ltd	179	Gabriel Resources NL
28	Aurora Gold Ltd	104	Clackline Refractories Ltd	180	Gencor Ltd
29	Australasian Gold Mines NL	105	Climax Mining Ltd	181	General Buldozing Co. Pty Ltd
30	Australasian Granite Pty Ltd	106	Clough Resources Ltd	182	General Gold Resources NL
31	Australian Glass Manufacturers Co.	107	Cobra Resources NL	183	Geographe Resources Ltd
32	Australian Gold Fields NL	108	Cockburn Cement Ltd	184	Giacci Holding Pty Ltd
33	Australian Mineral Investors Pty Ltd	109	Coeur D'Alene Mines Corp.	185	Gilbert F
34	Australian Mutual Provident Society	110	Collins Lorna	186	Gilt-Edged Mining NL
35	Australian Resources Ltd	111	Comalco Ltd	187	Giralia Resources NL
36	Australite Holdings Pty Ltd	112	Combined Nominees Pty Ltd	188	Glencore International Ag
37	Bakmac Resources Pty Ltd	113	Comet Resources NL	189	Glengarry Resources NL
38	Barminto Pty Ltd	114	Commercial Minerals Ltd	190	GME Resources NL
39	Barranco Resources NL	115	Consolidated Gold Mining Areas NL	191	Golden Deeps Ltd
40	Barrier Mining Services Pty Ltd	116	Consolidated Gold NL	192	Golden Embassy Pty Ltd
41	Barton Mines Corp.	117	Consolidated Minerals Ltd	193	Golden Tiger Resources NL
42	Bayly and Palm	118	Coolgardie Gold NL	194	Golden Valley Mines NL
43	Bell NRT	119	Costeo PG	195	Goldfields Kalgoorlie Ltd
44	Bellriver Pty Ltd	120	Cottingham R	196	Goldfields Ltd
45	Bennett J	121	Coumbe DR	197	Gondwana Resources NL
46	Bennett JSC	122	Crippen PM	198	Goodhill R W
47	Bennett WP and GP	123	Croesus Mining NL	199	Grange Resources NL
48	BHP-Utah Group	124	CSBP and Farmers Ltd	200	Great Central Mines NL
49	BHP Iron Ore Pty Ltd	125	Cultus Petroleum NL	201	Greater Pacific Gold NL
50	BHP Minerals Pty Ltd	126	Cusack BJ	202	Greater Pacific Investments Ltd
51	BHP Petroleum Pty Ltd	127	Cygnat Gold Mines NL	203	Green KL and PM
52	Biddle NG	128	Dalla-Costa MR	204	Greenstone Resources NL
53	Big Bull Joint Venture	129	Dalrymple Resources NL	205	Griffin Coal Mining Co. Ltd
54	Biggs and Williams	130	Dampier Salt Pty Ltd	206	Gypsum Holdings Ltd
55	Bilboa Nominees Pty Ltd	131	Danelagh Resources Pty Ltd	207	HB Brady Co. Pty Ltd
56	Binkovic and Salkanovich	132	Daniels DM	208	Haggarty AD
57	Birla Group	133	Danks KG	209	Hamed Mining Pty Ltd
58	Black Mountain Gold NL	134	Defiance Mining NL	210	Hamersley Iron Pty Ltd
59	Blacker GL and PE	135	Delta Gold NL	211	Hampton Australia Ltd
60	Blechynden RN	136	Denehurst Ltd	212	Hampton Hill Mining NL
61	Blue Spec Mining	137	Dickey CJ	213	Hancock and Gore Ltd
62	Bolrette Pty Ltd	138	Dodsley Pty Ltd	214	Hancock Resources Ltd
63	Bolwarra Pty Ltd	139	Dominion Mining Ltd	215	Haoma Mining NL
64	Boral Energy Resources Ltd	140	Donnellan TJ	216	Hardy Petroleum Ltd
65	Boral Resources (WA) Ltd	141	Donnybrook Quarries WA Pty Ltd	217	Harmark Pty Ltd
66	Border Gold NL	142	Dowling JF	218	Heald N
67	Bovell Nominees Pty Ltd	143	Downie AJ	219	Helix Resources NL
68	Breadsell SJ	144	Dragon Resources Ltd	220	Herald Resources Ltd
69	Bridgetown Mining Pty Ltd	145	Duketon Goldfields NL	221	Herbert Mining and Earthmoving Pty Ltd
70	Britannia Gold NL	146	Dusky Holdings Pty Ltd	222	Heron Resources NL
71	Broken Hill Metals NL	147	Eagle Mining Corp. NL	223	Hill 50 Gold NL
72	Bronzewing Gold NL	148	East Coast Minerals NL	224	Hillerman, Wandal, and Sime
73	Buchhorn PJ	149	Eaton MB and AE	225	Holm AM
74	Burdekin Resources NL	150	Egerton Gold NL	226	Homestake Mining Co.
75	Burmine Ltd	151	Electrometals Mining Ltd	227	Hoppmann JE
76	Butler AW and RG	152	Elmina NL	228	Hoppmann RJ



Code	Owner name	Code	Owner name	Code	Owner name
229	Horizon Mining NL	308	Mitsui	386	Read and Hackett
230	Hudson Resources Ltd	309	Mitsui-Itochu Iron Pty Ltd	387	Readymix Group Ltd
231	Hunter Exploration NL	310	Mobil Exploration and Producing Australia Pty Ltd	388	Reclaimed Resources Pty Ltd
232	Iacus BN and B	311	Modana Pty Ltd	389	Red Back Mining NL
233	Imdex NL	312	Money Mining NL	390	Renes NE
234	Industria Mineraria Italiana Fabi Srl	313	Montague Gold NL	391	Resolute Ltd
235	Intercontinental Gold and Minerals NL	314	Mount Mine Joint Venture	392	Resource Management Group Pty Ltd
236	Intermin Resource NL	315	Mourillian Mining Syndicate	393	Reynolds Australia Mines Pty Ltd
237	International Brick and Tile	316	Mt Burgess Gold Mining Co. NL	394	RGC Mineral Sands Pty Ltd
238	International Mineral Resources NL	317	Mt Edon Mines Pty Ltd	395	Richard Read and Associates Pty Ltd
239	Isk Minerals Pty Ltd	318	Mt Grace Gold Mining NL	396	Richmond WR
240	Italia Limestone	319	Mt Lyell Co. Ltd	397	Rio Tinto Ltd
241	Itochu Corp.	320	Murchison United NL	398	Risinger JE
242	Ivernia West PLC	321	Nash Mining	399	RJ Mining Pty Ltd
243	Jasper Mining Pty Ltd	322	Nero Exploration Pty Ltd	400	Robe River Iron Associates
244	John David Gough	323	New Hampton Goldfields NL	401	Rocla Ltd
245	Johnsons Well Mining NL	324	Newcrest Mining Ltd	402	Roebuck Resources NL
246	Jones DF	325	Nexus Minerals NL	403	Rough Range Oil
247	Jubilee Gold Mines NL	326	Nickel Seekers NL	404	Rowe DJ
248	Julia Mines NL	327	Nippon Steel Australia Pty Ltd	405	Rule, Hines, and Horton
249	Kalgoorlie Resources NL	328	Nixon PF and RS	406	Russell Mining
250	Kamin Pty Ltd	329	No current owner	407	Rutherford Resources Pty Ltd
251	Kanowna Lights NL	330	Normandy Mining Ltd	408	Sabre Resources NL
252	Kelly RG and RR	331	North Broken Hill Peko Ltd	409	Sadleir RC Pty Ltd
253	Kerr-McGee Chemical Corp.	332	North Coolgardie Resources NL	410	Salt Industries Pty Ltd
254	Keygem Nominees Pty Ltd	333	North Ltd	411	Samson Exploration NL
255	Kidman GA and JE	334	Northern Gold NL	412	Sand Queen Gold Mines NL
256	Kimberley Granite Resources Pty Ltd	335	Northey NJ	413	Sandhurst Mining NL
257	Kimberley Resources Ltd	336	Novus West Australia Pty Ltd	414	Santos Ltd
258	King Valley Holdings Pty Ltd	337	Nugold Hill Mines NL	415	Savage Resources Ltd
259	Kings Minerals NL	338	O'Sullivan Syndicate	416	Scott AN
260	Kingstream Resources NL	339	Odor Holdings Pty Ltd	417	Seivwright DK
261	Kinham Pty Ltd	340	Olden Malcolm Bay	418	Semczuk GA
262	Klaassen R	341	Onslow Salt Pty Ltd	419	Shalinden Pty Ltd
263	Kliendienst NR	342	Orbicular Granites Pty Ltd	420	Shell Company of Australia Ltd
264	Klondyke Mining Co. Pty Ltd	343	Orchard WM	421	Shin-Etsu Chemical Company
265	Kwinana Town Council	344	Osborne Cold Stores (WA) Pty Ltd	422	Simto Resources Ltd
266	Lachlan Resources NL	345	Ostanberg Holdings Pty Ltd	423	Sipa Resources Ltd
267	Lederer J	346	Outokumpu Australia Pty Ltd	424	Sirr RA
268	Lefroy GB	347	Pacific Nevada Mining Pty Ltd	425	Skoglund S
269	Legend Mining NL	348	Pacmin Mining Co. Ltd	426	Slater AW
270	Liaoning Consultancy and Investment Pty Ltd	349	Paladin Resources NL	427	Smith JA
271	Limestone Natural	350	Panorama Resources NL	428	Smyth PR
272	Limestone Resources Australia Pty Ltd	351	Parek Pty Ltd	429	Snell KC
273	Lionore Mining International Ltd	352	Pavilly Pty Ltd	430	Soklich F
274	Livingstone Resources NL	353	Pavlinovich KM	431	Soklich Z
275	Locsei J	354	PDPG Mining Syndicate	432	Sons of Gwalia NL
276	Loxton, Loxton, and Lucas	355	Peat Resources of Australia Pty Ltd	433	Sovereign Resources (Aust.) NL
277	Lynas Gold NL	356	Peric M	434	Spargo RM
278	MacDonald SA	357	Perilya Mines NL	435	St Barbara Mines Ltd
279	Mackic J	358	Perseverance Mining Pty Ltd	436	St Francis Mining NL
280	Magellan Mining Pty Ltd	359	Perth Granite Holdings Pty Ltd	437	Stanley Mining Services Ltd
281	Main Reef Gold Pty Ltd	360	Perth Rock Supply	438	Statminco Pty Ltd
282	Mann RE	361	Petersons GJ	439	Stickland RA
283	Maroubra Pty Ltd	362	Phillips IM and WD	440	Stone Enterprises
284	Mason R and VC	363	Phillips River Mining Pty Ltd	441	Stone Industries of Australia Pty Ltd
285	May BA	364	Pilbara Mines NL	442	Straits Resources Ltd
286	MBL Exploration Pty Ltd	365	Pioneer Concrete Pty Ltd	443	Striker Resources Ltd
287	McAndrew RW and GN	366	Placer Pacific Ltd	444	Stubbs SH, MT, and MG
288	McCormick CD	367	PNC Exploration (Aust.) Pty Ltd	445	Subiaco Health and Wellbeing Pty Ltd
289	McDonald Mining Pty Ltd	368	Pool MJ	446	Sullivan MR, PR, DA, and JN
290	McGuire KR	369	Poona Emerald Pty Ltd	447	Summit Resources NL
291	McLarty WJ	370	Portman Mining Ltd	448	Sunray Nominees Pty Ltd
292	McLean TG and JM	371	Povey SG	449	Supersorb Pty Ltd
293	McMurdo RV	372	Powell WD	450	Swan Portland Cement Ltd
294	Metex Resources NL	373	Precious Gem Pty Ltd	451	Swan Resources Ltd
295	Metro Brick	374	Precious Metals Australia Ltd	452	Taipan Resources NL
296	Midland Brick Co. Pty Ltd	375	Premier Oil Australia Pty Ltd	453	Talon Resources NL
297	Midwest Gypsum and Limesands	376	Prestige Brick Pty Ltd	454	Tanami Gold NL
298	Milic P	377	Preston Resources NL	455	Tanganyika Gold NL
299	Milling PS	378	QNI Ltd	456	Tarabini VA
300	Mineral Commodities NL	379	Quartz Mountain Mining Pty Ltd	457	Taylor AE and EF
301	Mineral Resources (NZ) Ltd	380	Quicksilver Resources NL	458	Tectonic Resources NL
302	Mineralogy Pty Ltd	381	Radman Mining Pty Ltd	459	Terrex Resources NL
303	Minerichie Investment Pty Ltd	382	Ramirez AJ	460	Thomas LE
304	Mines and Resources Australia Pty Ltd	383	Ramsgate Resources Ltd	461	Thompson AC
305	Mingkala Stone	384	Rare Resources NL	462	Thompson, Hinchliffe, Wallace, Myers, and McDonald
306	Mining Project Investors Pty Ltd	385	RC Sadler Pty Ltd	463	Ticor
307	Ministerial Reserve				



<i>Code</i>	<i>Owner name</i>
464	Titan Resources NL
465	Tochu Co. Ltd
466	Tomen Australia
467	Total Mining Australia Pty Ltd
468	Trans Global Resources NL
469	Triako Resources Ltd
470	Trigold Nominees Pty Ltd
471	Triton Resources NL
472	Troy Resources Ltd
473	Tulloch Resources NL
474	Turkey Creek Mining
475	Valenti E
476	Van VJ
477	Vermiculite Industries Pty Ltd
478	Victoria Petroleum NL
479	Vigeo Pty Ltd
480	WA Limestone Co.
481	Wales Quarries
482	Wanless M
483	Wanless RJ
484	WAPET Pty Ltd
485	Warriete Pty Ltd
486	WA Salt Supply Nominees Pty Ltd
487	Wehla Gold NL
488	Welcome Stranger Mining Co. NL
489	Wells Gold Corp. NL
490	Wesfarmers Coal Ltd
491	West Australian Metals NL
492	West Coast Holdings Ltd
493	Westdeen Holdings Pty Ltd
494	Western Australian Gem Explorers Pty Ltd
495	Western Districts Corp. Pty Ltd
496	Western Limestone Co.
497	Western Metals NL
498	Western Minerals NL
499	Western Reefs Ltd
500	Westgold Resources NL
501	Westonia Mines Pty Ltd
502	Westralian Sands Ltd
503	Weybridge Pty Ltd
504	White R
505	Williams GE
506	Williams J
507	Wiltshire KM
508	WMC Ltd
509	Wood F
510	Wood JP
511	Woodcock B and JL
512	Woods PJ
513	Woodside Petroleum Ltd
514	Wright Prospecting Ltd
515	Yandcra Pty Ltd
516	Yerilla Mines Pty Ltd
517	Yilgarn Independent Mineral Processors Pty Ltd
518	Yinnex NL
519	Ynema MH





DEPARTMENT OF  
MINERALS AND ENERGY  
WESTERN AUSTRALIA

*"Our Resources • Our People • Our Future"*

Further details of geological publications and maps  
produced by the Geological Survey of Western Australia  
can be obtained by contacting:

Information Centre  
Department of Minerals and Energy  
100 Plain Street  
East Perth WA 6004

Phone: 061-8-9222 3459

Fax: 061-8-9222 3444

[www.dme.wa.gov.au](http://www.dme.wa.gov.au)