

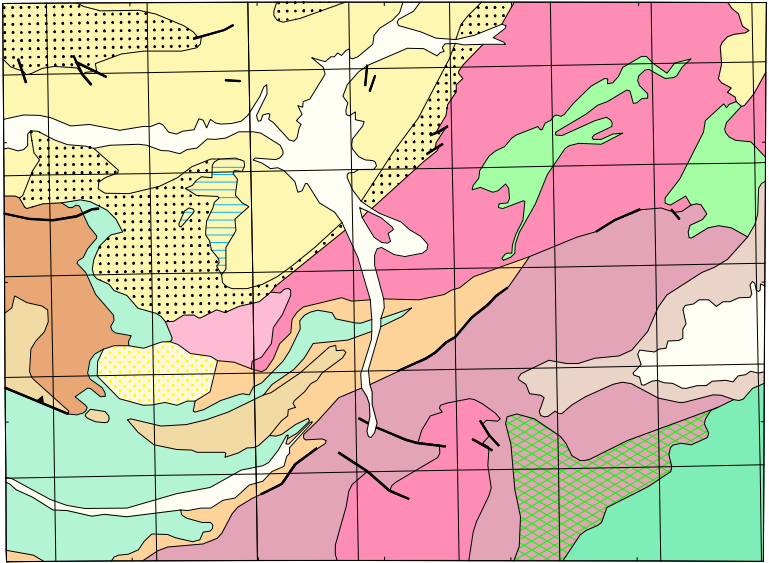
SAMPLE LOCATIONS

Sample point references

- 122123 Lake sample
- 122123 Stream sample
- 122123 Soil sample

- Principal road
- Minor road
- Track
- Watercourse and lake boundaries
- Locality
- Homestead
- Significant mine

GEOLOGICAL INTERPRETATION



Geological interpretation after Gee (1987), Adamides (1995), Pijnroo and Ochipinti (1995). Subject to modification at close of current mapping program.

- PROTEROZOIC
- Calvinian alluvial deposits; includes calcareous
 - Bengallian Group
 - Sandstone, minor siltstone; rare dolomite
 - Shale, chert, rare dolomite
 - Carbonate rock; includes dolomite sill
 - Barabur Group
 - Carbonate rock, shale, sandstone
 - Peel Group
 - Iron-formation, sandstone, shale
 - Bryah Group
 - Iron-formation, manganese-rich shale, siltstone, argillite
 - Arisea, wacke, sandstone, shale
 - Mafic lavas, sills, and breccias
 - Quartz-sericite schist, mylonite
 - Glengary sequence
 - Wacke, sandstone, shale, carbonate rock
 - Mafic rock; wacke, sandstone, shale, carbonate rock
 - Mafic rocks; subordinate black shale, sandstone, quartzite
- ARCHAEOZOIC
- Granitoid rock
 - Metamorphosed mafic, ultramafic, and felsic volcanic rocks; sedimentary rocks including iron-formation
 - Gneiss, amphibolite and calc-silicate rocks

SAMPLE LOCATIONS

REGOLITH GEOCHEMISTRY SERIES

PEAK HILL

SHEET SG 50-8
FIRST EDITION 1995
© Western Australia

Edited by: C. Strong and G. Loan

Cartography by: K. Smith and G. Jose

Topographic information supplied by the Australian Surveying and Land Information Group, and roads modified from geological field survey (1994)

This map was compiled digitally from the geochemical database held by Geological Survey Western Australia and stored in the ORACLE database management system; compiled and produced using a Geographic Information System, Arc/info, and available in digital form

Copies of this map, or extracts from the database, are available from the Department of Minerals and Energy, 100 Plain Street, East Perth, 6004



DEPARTMENT OF MINERALS AND ENERGY
HON. GEORGE CARR, J.P., M.L.C.
MINISTER FOR MINES
K.A. PERRY, DIRECTOR GENERAL

SCALE 1:250 000



TRANSVERSE MERCATOR PROJECTION

Grid lines indicate 20 000 metre interval of the Australian Map Grid Zone 50



PETRO GUJ
DIRECTOR, GEOLOGICAL SURVEY
OF WESTERN AUSTRALIA

Sampling by: A.G. Subramanya (GSWA) with assistance from S. King, G. Lawrence and G. Tolland (Geochem Australia) 1994

Total sample sites: 1013; 618 stream sediment, 12 lake sediment, and 383 soil

Analyst: Chemistry Centre, Western Australia. Minimum sample size: 1.5 kg. Fraction of soil, stream sediment and lake sediment samples analysed: <2mm<0.45mm

The recommended reference for this map: SUBRAMANYA, A.G., FAULKNER, J.A., and SANDERS, A.J., 1995, Peak Hill, W.A. -- Sample locations: Western Australia Geological Survey, 1:250 000 Regolith Geochemistry Series

WARNING: Inks are water soluble and will fade with prolonged exposure to light