



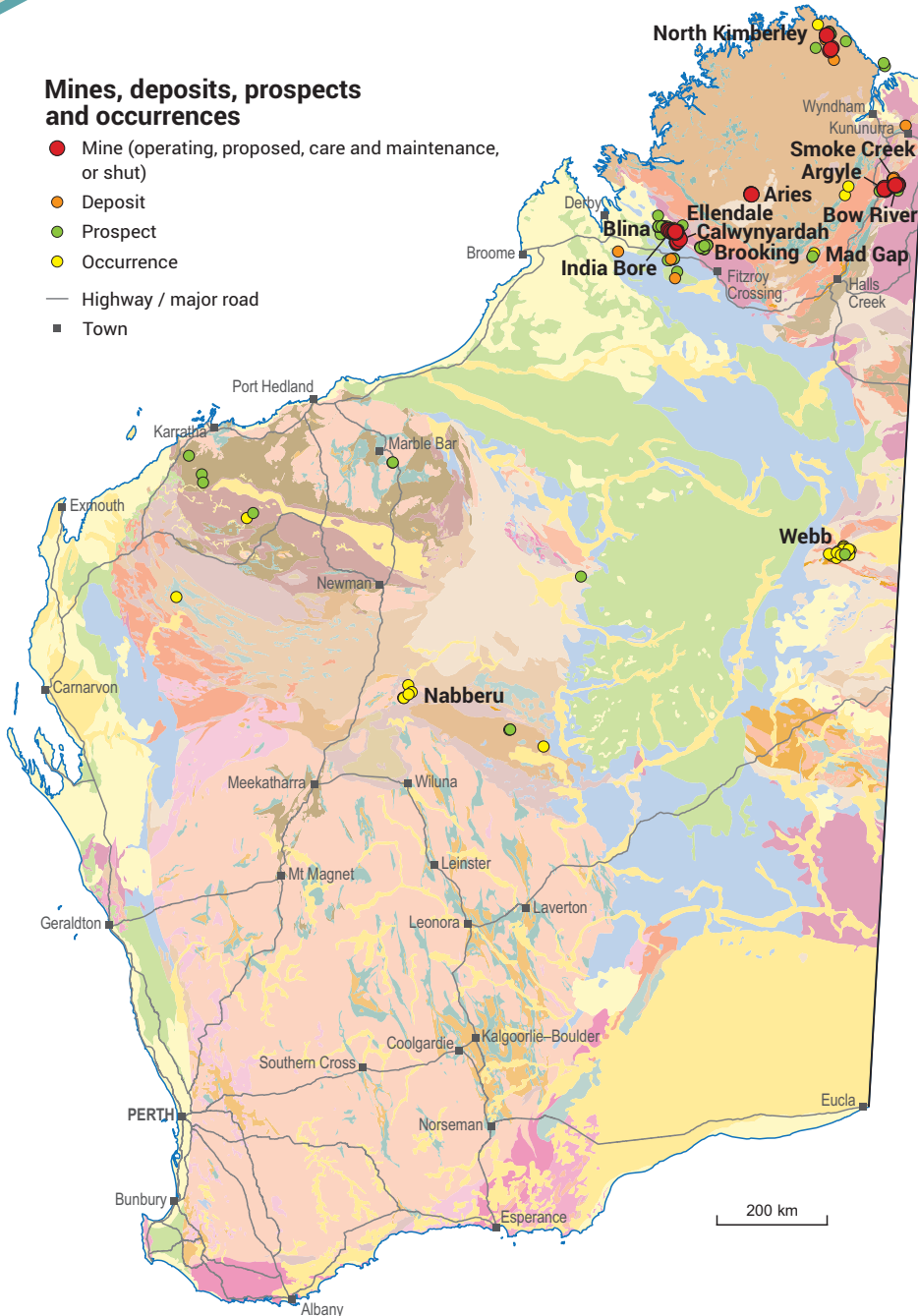
# DIAMOND

## INVESTMENT OPPORTUNITIES

WORLD-CLASS RESOURCE PROVINCE | SECURE INVESTMENT LOCATION  
WORLD-LEADING GEOSCIENTIFIC DATA | GLOBAL MINING SERVICES INDUSTRY

### Mines, deposits, prospects and occurrences

- Mine (operating, proposed, care and maintenance, or shut)
- Deposit
- Prospect
- Occurrence
- Highway / major road
- Town



### Global demand continues for Western Australia's pink, yellow and red diamonds

- Argyle and the Ellendale lamproite pipes and associated alluvial deposits have been the most successful diamond fields in Australia
- Argyle (AK1) was one of the world's largest producers of gem-quality diamonds and the largest supplier of coloured diamonds including rare pink and red diamonds. The mine closed at the end of 2020 after producing over 825 million carats of rough cut diamonds since 1983
- The Ellendale lamproite diamond field, covering over 900 km<sup>2</sup>, is the largest lamproite field in the west Kimberley and has supplied a significant proportion of the world's Fancy Yellow diamonds. Ellendale 4 and 9 pipes produced 424 000 ct over a 13-year mine life

### Current exploration

- Diamond exploration in the Ellendale diamond field is currently concentrated on alluvial diamonds surrounding the former Ellendale Diamond Mine. Tenements associated with the Ellendale field have been acquired by Gibb River Diamonds Ltd (Blina project) and India Bore Diamond Holdings (India Bore project) after they were invited to apply by the Western Australian Minister for Mines
- The Brooking Springs area, under exploration by Lucapa Diamond Mining Co Ltd, Brooking Diamonds Pty Ltd and Leopold Diamond Co Pty Ltd, contains diamondiferous lamproite pipes
- Other diamond prospects include the Lower Smoke Creek (Astro Resources), Aries (Odessa Minerals, Jindalee NL), Calwinyardah (Odessa Minerals), North Kimberley (Lithoquest Pty Ltd), Mad Gap (Prenti Exploration Pty Ltd) and the Webb Project (Geocrystal Ltd, Meteoric Resources)



## Diamond resources ranked by contained diamonds (Mct)

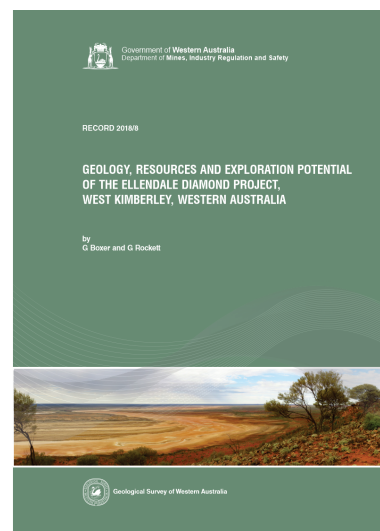
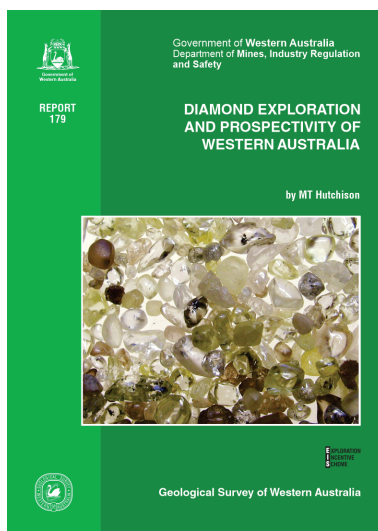
Resources estimated according to JORC 2012

Project	Status	Owner	Resources (Mt)	Av. grade (ct/t)	Contained diamonds (Mct)	Resource date
Smoke Creek	Exploration	West Australian Diamond Corporation	35.7	0.26	9.17	20/10/2018
Ellendale	Exploration	Burgundy Diamond Mines	49.2	0.04	2.07	30/06/2015
North Kimberley*	Shut		4.2	0.21	0.87	31/07/2015
Bow River*	Shut		1.5	0.20	0.30	19/08/2004
<b>TOTAL</b>			<b>95.7</b>		<b>22.10</b>	

\* Resource estimates are not JORC 2012 compliant

- India Bore Diamond Holdings Pty Ltd has reported a diamond target of 16.4 Mt at 7.95 ct per hundred tonnes for its L Channel deposit (part of the India Bore project) supporting a minimum 12-year Life of Mine proposal
- The exploration and prospectivity package for Western Australia contains locations of diamond exploration sites, and the chemical analysis of possible diamond-bearing bodies including kimberlites, lamproites, ultramafic lamprophyres, and carbonatites
- The diamond exploration package was released by the Department of Mines, Industry Regulation and Safety (DMIRS) in 2018 and collates the State's publicly available diamond exploration data

These products are available as free downloadable PDFs from the DMIRS bookshop ([www.dmirs.wa.gov.au/ebookshop](http://www.dmirs.wa.gov.au/ebookshop))



Products released by DMIRS



Fancy Yellow diamonds from India Bore's exploration project



Pink Diamond from Argyle Diamond Mine (Image courtesy Rio Tinto)

### For more information



[www.dmirs.wa.gov.au/gswa](http://www.dmirs.wa.gov.au/gswa)



[www.dmirs.wa.gov.au/minedex](http://www.dmirs.wa.gov.au/minedex)



[www.dmirs.wa.gov.au/geoview](http://www.dmirs.wa.gov.au/geoview)

### Contact us

Sarah Sargent

Geological Survey and Resource Strategy Division

Email: [minerals.investors@dmirs.wa.gov.au](mailto:minerals.investors@dmirs.wa.gov.au)

Tel: +61 8 9222 3890



Government of Western Australia  
Department of Mines, Industry Regulation and Safety

October 2021

Geological Survey of  
Western Australia

