

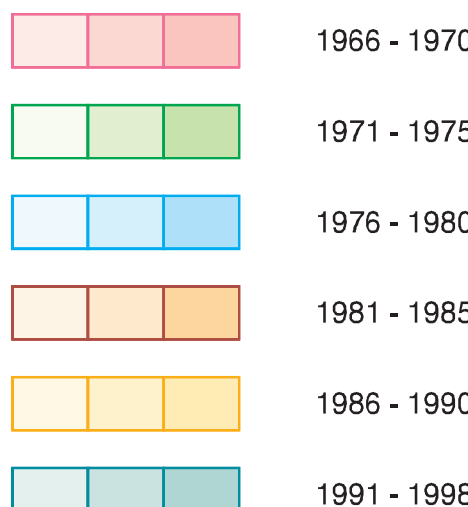
BYRO

GEOLOGICAL SURVEY OF WESTERN AUSTRALIA

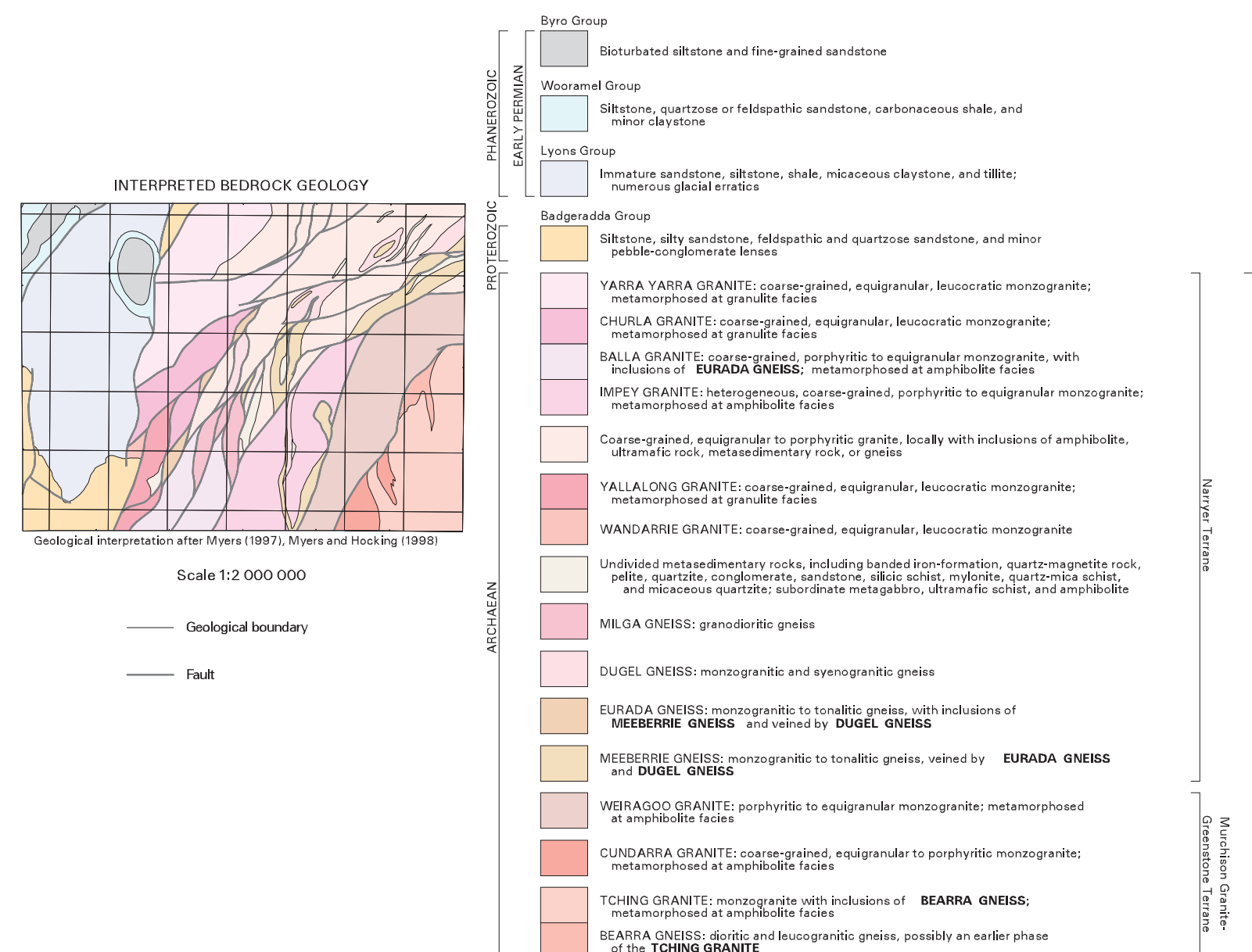
SHEET 56 50-10

COMPANY PROJECTS WITH SURFACE
GEOCHEMISTRY DATA IN OPEN-FILE
REPORTS (at August 2000)

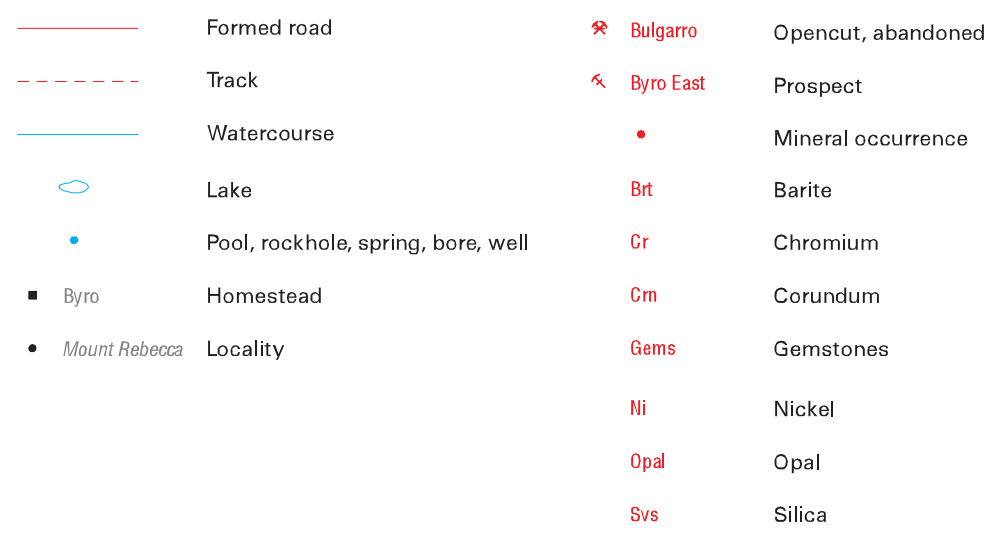
Project period reported within
(Various colour shades used for ease of
project identification)



Number within project area is a database ID number
(see Appendix 2 of the Explanatory Notes)



SYMBOLS



Edited by N. Tetlow, K. Greenberg, and G. Loan

Cartography by M. Vicenti

Topography from Australian Surveying and Land Information Group, and Department of Land Administration Sheets 56 50-10

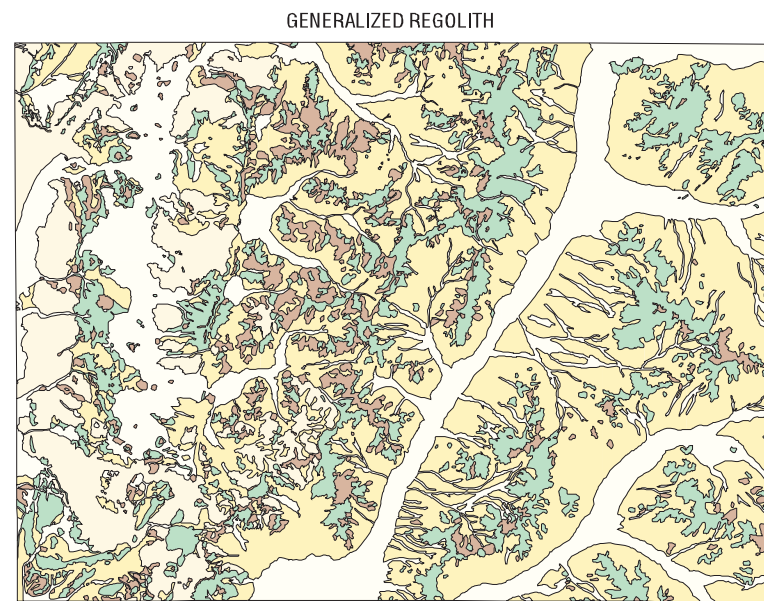
This map was compiled and produced using a Geographic Information System (ArcInfo), and the data are available in digital form

Published by the Geological Survey of Western Australia. Copies of this map, or extracts of the data, are available from the Information Centre, Department of Minerals and Energy, 100 Plain Street, East Perth, W.A., 6004. Phone (08) 9222 3458, Fax (08) 9222 3444

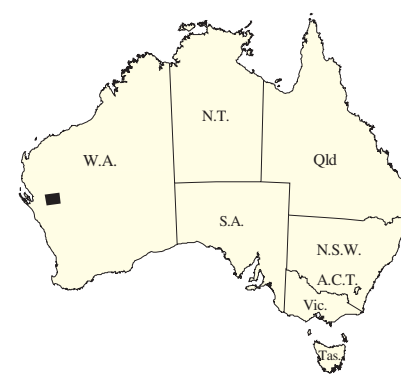
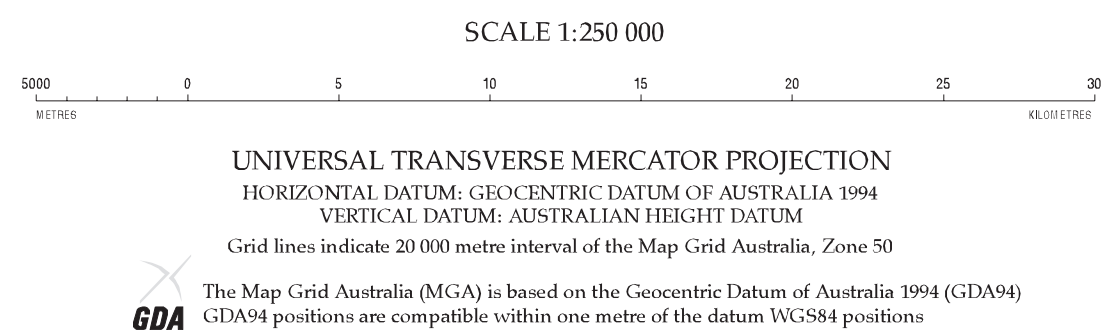
Compiled by A. L. Verrin 2000

Compiled from the Geological Survey of Western Australia SPINDEX database and open-file mineral exploration reports

The recommended reference for this map is:
VERREN, A. L. 2001. Company projects with surface geochemistry data in open-file reports (at August 2000). Byro, W.A. Sheet 56 50-10, in: Geochemical mapping of the Byro 1:250 000 sheet. by P.A. Morris and A. L. Verrin: Western Australia Geological Survey, 1:250 000 Regolith Geochemistry Series Explanatory Notes, Plate 2



SCALE 1:100 000



SHEET INDEX		
WOORAMILL 56 50-5	OLENBURGH 56 50-6	ROBINSON RANGE 56 50-7
YARRA 56 50-9	BYRO 56 50-10	MELLE 56 50-11
ALMA 56 50-13	MURDOO 56 50-14	CLUE 56 50-15

INDEX TO 1:100 000 MAP SHEETS		
RODA BODA 2045	BYRO 2145	MILLY MILLY 2245
BADGERDALE 2044	CHILY YARRA 2144	BOLLARDY 2244



DEPARTMENT OF MINERALS
AND ENERGY
L.C. HANFORD, DIRECTOR GENERAL



GOVERNMENT OF WESTERN AUSTRALIA
CLIVE BROWN, M.L.A.
MINISTER FOR SMALL BUSINESS, TOURISM,
SMALL BUSINESS DEVELOPMENT, TOURISM



GEOLOGICAL SURVEY OF
WESTERN AUSTRALIA
TIM GRIFFIN, DIRECTOR

COMPANY PROJECTS WITH SURFACE
GEOCHEMISTRY DATA IN OPEN-FILE
REPORTS (at August 2000)

REGOLITH GEOCHEMISTRY SERIES

BYRO

SHEET 56 50-10
FIRST EDITION 2001
© Western Australia 2001

WARNING: Inks are water soluble and will
fade with prolonged exposure to light