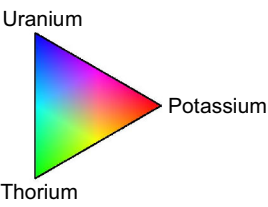
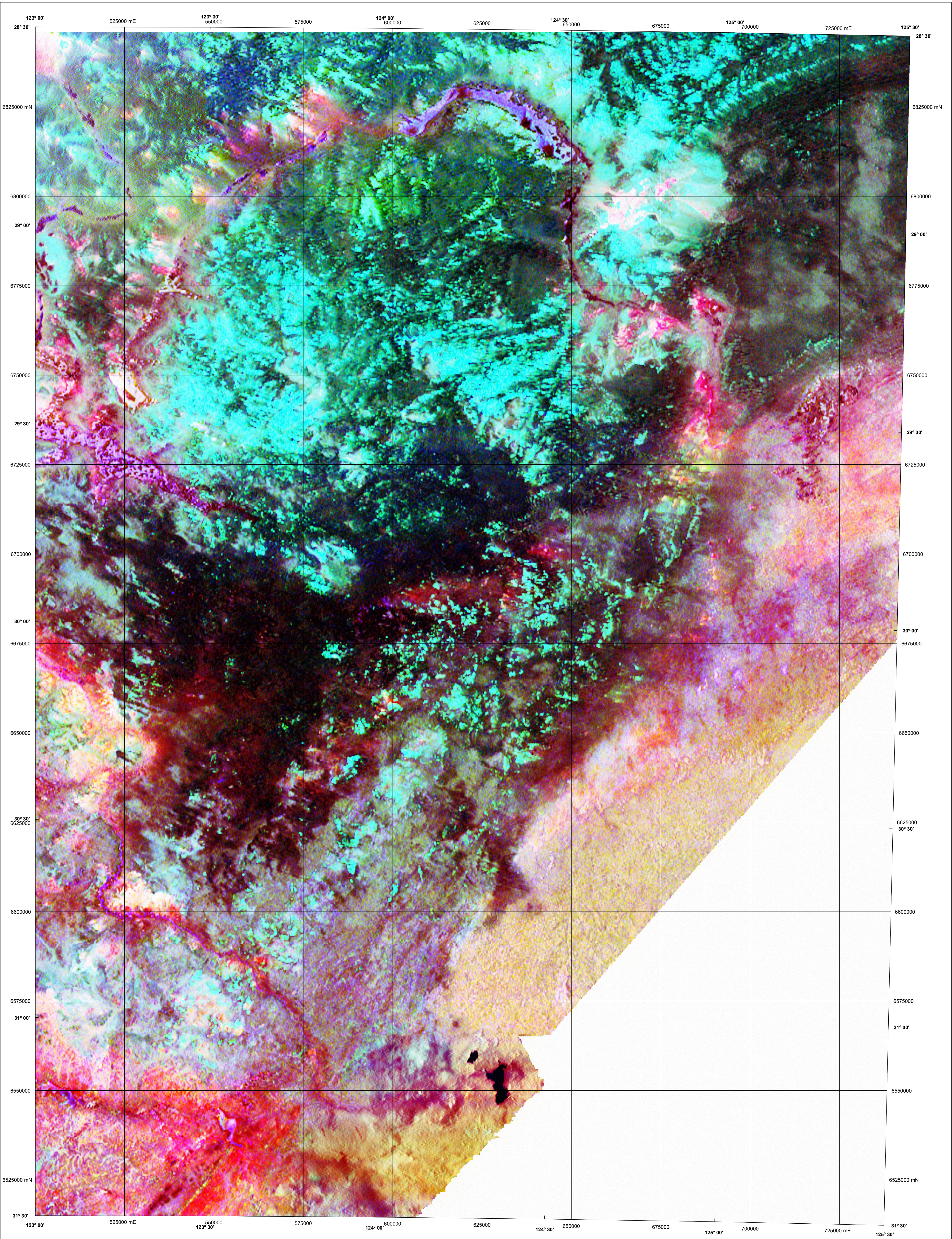


# EAST YILGARN

GEOLOGICAL SURVEY OF WESTERN AUSTRALIA

1:250 000 SHEETS SH 51-7, SH 51-11  
PART OF 1:250 000 SHEETS SH 51-3, SH 51-4, SH 51-8, SH 51-12, SH 51-15

1:500 000 TERNARY RADIOMETRIC IMAGE



Data acquired in 2006 were merged by Geological Survey of Western Australia with existing government and private company data, flown between 1989 and 2003. These data now form part of the National Airborne Geophysical Database.

Published by the Geological Survey of Western Australia. Copies are available from the Information Centre, Department of Industry and Resources, 100 Plain Street, East Perth, WA 6004. Telephone (08) 9222 3459, Fax (08) 9222 3444, [www.dor.wa.gov.au](http://www.dor.wa.gov.au)

Compilation and image processing J. H. Watt  
Cartography J. Simonelli  
Geophysics Project Manager S. H. D. Howard

Individual located data sets and grids are available in digital form from the Sales Centre, Geoscience Australia, GPO Box 378, Canberra, ACT 2601. Telephone (02) 6249 9966, Fax (02) 6249 9960, or by download from Geoscience Australia, [www.geoscience.gov.au/gadds](http://www.geoscience.gov.au/gadds)

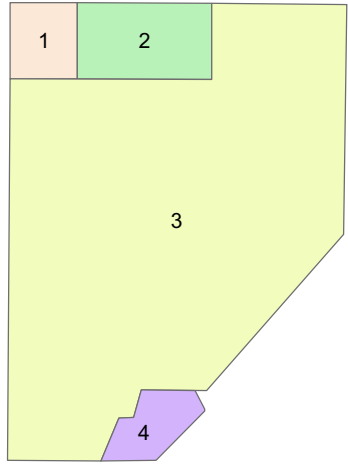
The recommended reference for this map is:  
GEOLOGICAL SURVEY OF WESTERN AUSTRALIA, 2007, East Yilgarn, W.A. Sheets SH 51-7, SH 51-11, and Part Sheets SH 51-3, SH 51-4, SH 51-8, SH 51-12 and SH 51-15: Western Australian Geological Survey, 1:500 000 Ternary Radiometric Image.



## SHEET INDEX

QUENTON SH 51-6	THROSBELL SH 51-7	WESTWOOD SH 51-8	LEWIS SH 51-9
LAKERTON SH 51-2	BACON SH 51-3	HEALE SH 51-4	VERDON SH 51-5
COLLINA SH 51-6	MINDAL SH 51-7	PLUMBERS SH 51-8	ARLEE SH 51-9
KURNALLUP SH 51-10	CANDRELL SH 51-11	BESMORE SH 51-12	LONGMAN SH 51-13
WICKHAMPTON SH 51-14	DARTMOUTH SH 51-15	WARTHA SH 51-16	MACDONALD SH 51-17
NOONMUN SH 51-2	BALLADONNA SH 51-3	OLIVER SH 51-4	BURNABEE SH 51-5

## SURVEY INDEX



The image is compiled from the four surveys listed below, the areas covered by each are shown on the survey index.

Survey ID	Survey name	Flight line spacing	Flight line direction	Ground clearance	Crystal volume	Contractor	Date	Client
1	Yilgarn	200 m	90° – 270°	60 m	33.6 litres	World Geoscience	1989	World Geoscience
2	Rason	400 m	0° – 180°	60 m	33.6 litres	GA	2003	GA
3	East Yilgarn	400 m	90° – 270°	60 m	33.6 litres	Fugro	2006	GSWA/GA
4	Central Fraser	300 m	90° – 270°	70 m	33.6 litres	Kevron	1999	BHP Minerals Pty Ltd

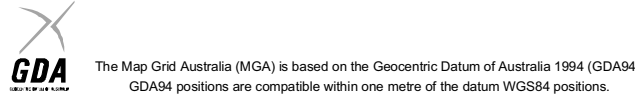


## NGA

PRODUCT OF THE NATIONAL  
GEOSCIENCE AGREEMENT

SCALE 1:500 000  
5000 0 5 10 15 20 25 30 35 40 45 50  
Metres Kilometres

UNIVERSAL TRANSVERSE MERCATOR PROJECTION  
HORIZONTAL DATUM: GEODETIC DATUM OF AUSTRALIA  
Grid lines indicate 25 000 metre interval of the Map Grid Australia Zone 51



GEOLOGICAL SURVEY OF WESTERN AUSTRALIA

TERNARY RADIOMETRIC IMAGE  
Potassium, Thorium, Uranium as red, green, blue

## EAST YILGARN

1:250 000 SHEETS SH 51-7, SH 51-11  
PART OF 1:250 000 SHEETS SH 51-3, SH 51-4,  
SH 51-8, SH 51-12, SH 51-15

First Edition 2007

Version 1.0 — April 2007

© Western Australia 2007

WARNING: Inks are water soluble and will fade with prolonged exposure to light