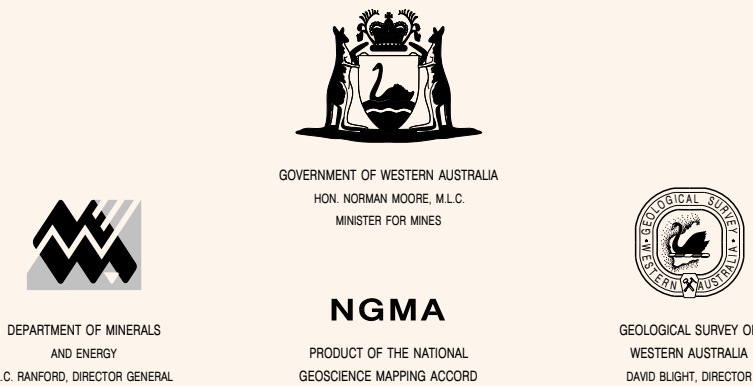


SHEET INDEX						
WALGRA	SARRE	WARRION	WOUT WIGON	SILKARO	VELTA	
209	270 BARLEGE	209	209	309 MENDES	278	
KOB	SH 10-9 JOHNSON ANGUS	LAGE SLEIS	MELING	SH 51-5 WIGON	MENDES	
208	278	208	208	308	278	
WONGHANG	JACKSON	BUNGRIN	HEARWING	DAFFKURT	BAROC	
207	270 JACKSON	207	207	307	277	
WALSH(DONALD)	SH 50-12 BUNGRIN	ISBERG	MOSEF WILSON	KALGOORLE		SH 51-9 DANIELLE
208	278	208	208	308	KALGOORLE	



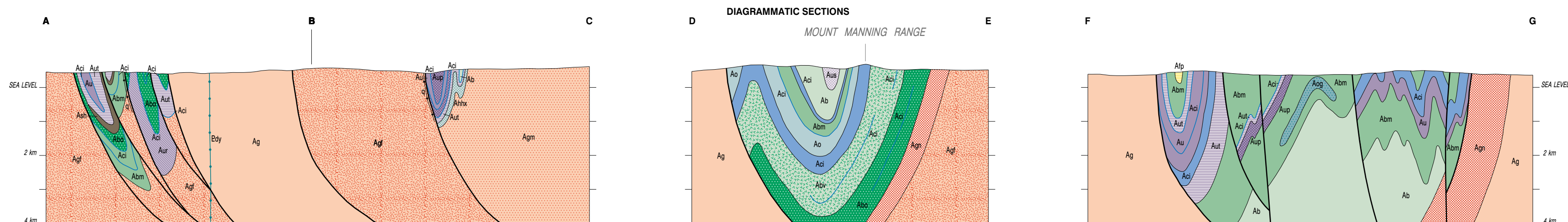
SCALE 1:100 000

1000 0 1 2 3 4 5 6 7 8 9

Metres UNIVERSAL TRANSVERSE MERCATOR PROJECTION Kilometres

 The Map Grid Australia (MGA) is based on the Geocentric Datum of Australia 1994 (GDA94).
GDA94 positions are compatible within one metre of the datum WGS84 positions.

⊙ Reference points to align maps based on the previous datum, AGD84, have been placed near the map corners.



Geology by J. Greenfield 1998
Geochronology by D. R. Nelson
Edited by N. Tetlow and C. Brian
Cartography by D. Ludbrook and B. Williams
Topography from the Department of Land Administration Sheet 5H 50 4, 2938
with modifications from geological field survey

Published by the Geological Survey of Western Australia. Copies available from
the Information Centre, Department of Minerals and Energy, 192 Plain Street,
East Perth, WA, 6004. Phone (08) 322 3459, Fax (08) 322 3444
This map is also available in digital form

Printed by the Sands Print Group, Western Australia

The recommended reference for this map is:
GREENFIELD, J., 2000, Lake Giles, WA. Sheet 2938:
Western Australia Geological Survey, 1:100,000 Geological Series