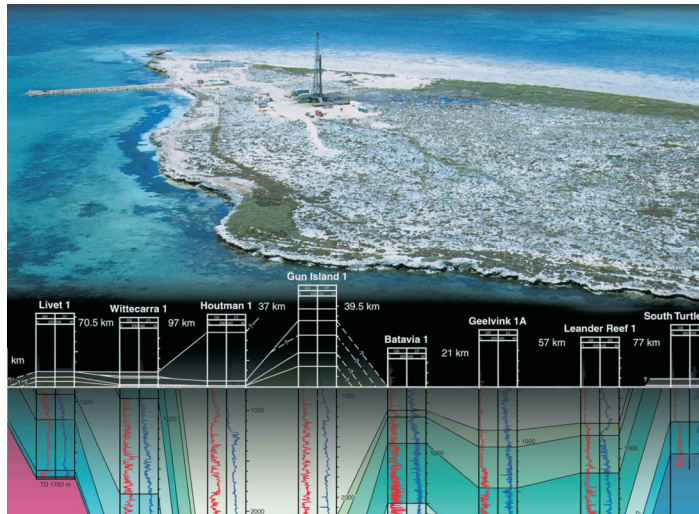


REPORT
75



GEOLOGY AND PETROLEUM POTENTIAL OF THE ABROLHOS SUB-BASIN WESTERN AUSTRALIA

by A. Crostella



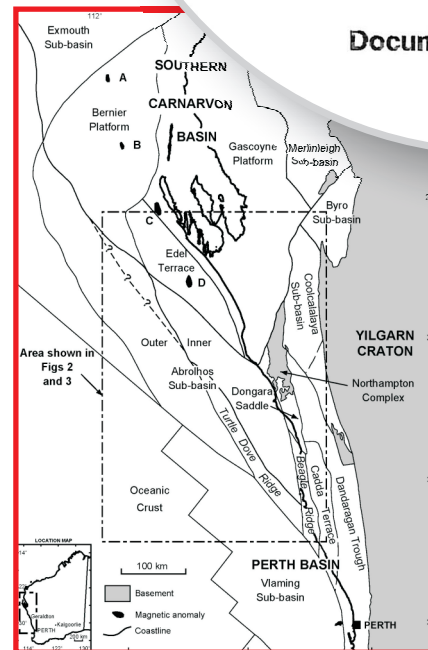
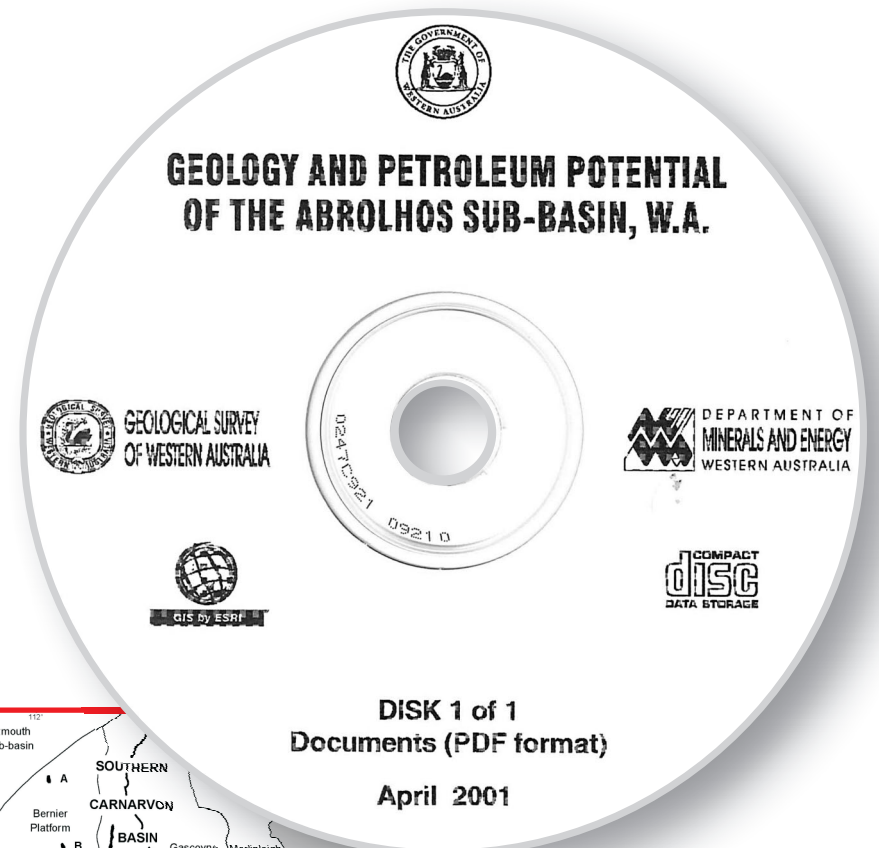
GEOLOGICAL SURVEY OF WESTERN AUSTRALIA
DEPARTMENT OF MINERALS AND ENERGY

Geology and Petroleum of the Abrolhos Sub-basin, Western Australia

Product available from First Floor counter, Mineral House, 100 Plain St, East Perth, WA 6004, AUSTRALIA. Or ordered through: www.dmp.wa.gov.au/ebookshop

Enquiries to Email: gsd.dda@dmp.wa.gov.au; Phone: +61 8 9222 3459; Fax: +61 8 9222 3444.

Cost: \$22 [inc. GST]



The report is on the Abrolhos Sub-basin, a transitional area between the Perth and Carnarvon Basins. This entirely offshore sub-basin is a frontier region for petroleum exploration with potential for oil and gas. The area is analysed on the basis of post-mortems and geochemistry of the eight petroleum exploration wells, as well as seismic data in the vicinity of each well. This disk contains:

- the full text of GSWA Report 75, and
- 1 plate.