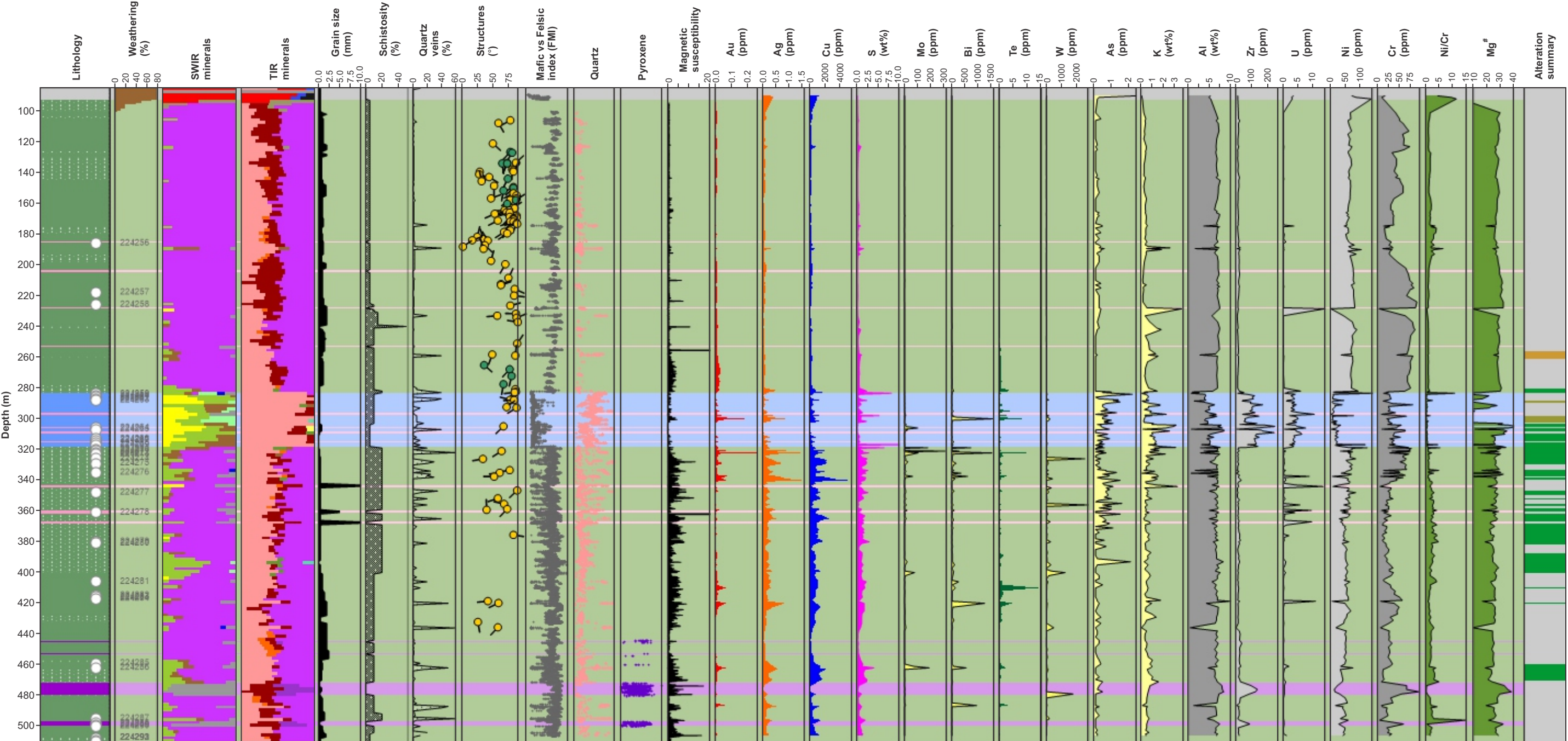


Table of Contents

App 1a Drillhole logs for PND001	2
1 Page 1	2
App 1b Drillhole logs for PND002	3
1 Page 1	3
App 1c Drillhole logs for PND003	4
1 Page 1	4
App 1d Drillhole logs for PND004	5
1 Page 1	5
App 1e Drillhole logs for PND005	6
1 Page 1	6



PD225

Lithology

- Undifferentiated
- Pegmatite
- Dolerite
- Amphibolite, fine-grained
- Amphibolite, coarse-grained
- Metapsammite

Short-wave infrared (SWIR) minerals

- Kaolin
- White-mica
- Smectite
- Other-ALOH
- Chlorite
- Dark-mica
- Amphibole
- Epidote
- Carbonate
- Invalid

Thermal infrared (TIR) minerals

- Silica
- K-feldspar
- Plagioclase
- Pyroxene
- Kaolin
- White-mica
- Smectite
- Other-ALOH
- Chlorite
- Dark-mica
- Amphibole
- Epidote
- Carbonate

Alteration

- Least-altered
- Stage 2 biotite-quartz-pyrite-pyrrhotite-titanite-ilmenite-chalcocopyrite±apatite±hornblende±scheelite

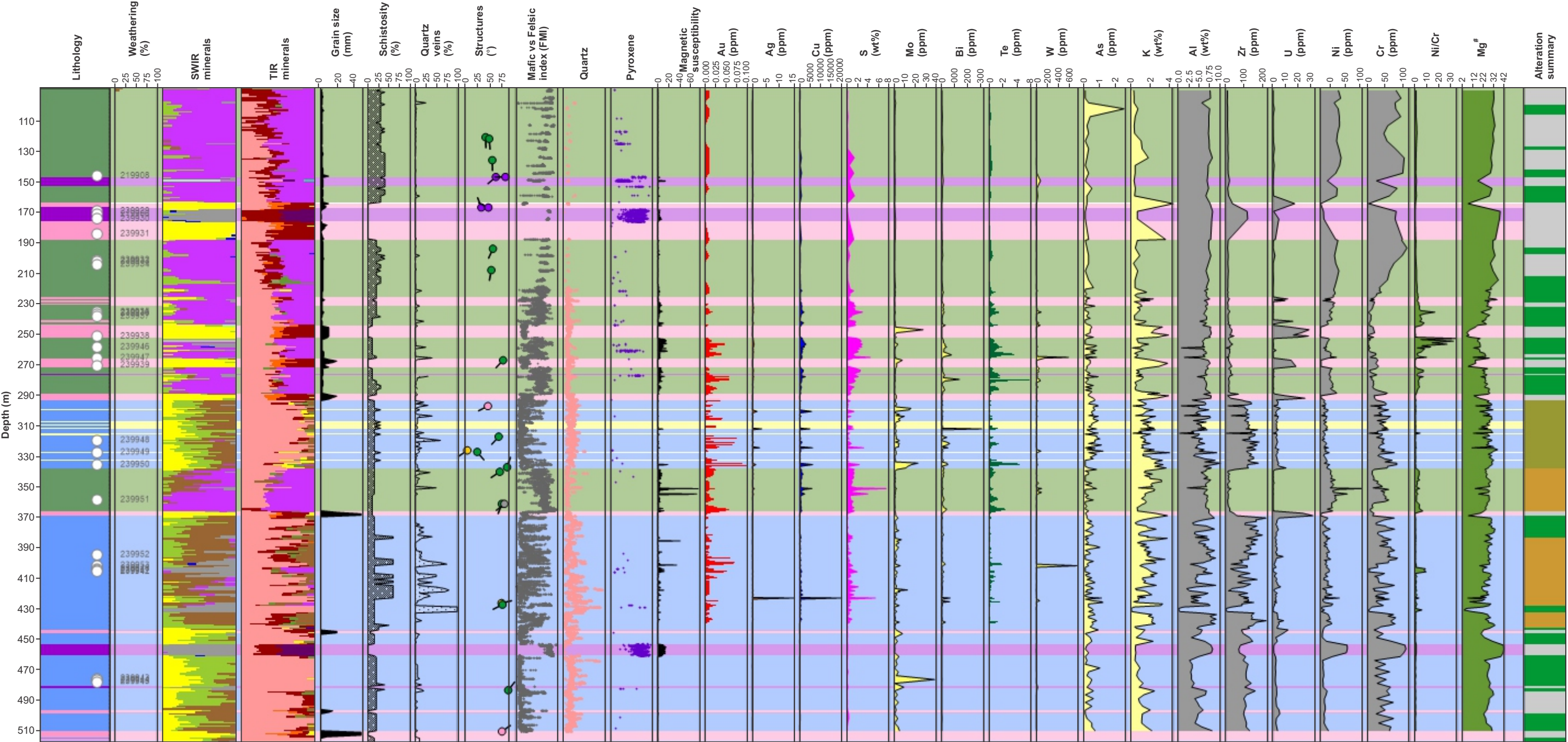
- Stage 2 biotite-quartz-pyrite-pyrrhotite-chalcocopyrite±muscovite±ilmenite±titanite
- Stage 4 chlorite±epidote±clinozoisite±chalcocopyrite±pyrite±ilmenite±titanite

Structures

- Foliation
- Vein

PND001

31/01/22



PD226

31/01/22

Lithology

- Pegmatite
- Dolerite
- Amphibolite
- Metapelite
- Metapsammite

Short-wave infrared (SWIR) minerals

- Kaolin
- White-mica
- Smectite
- Other-ALOH
- Chlorite

Thermal infrared (TIR) minerals

- Dark-mica
- Amphibole
- Epidote
- Carbonate
- Invalid

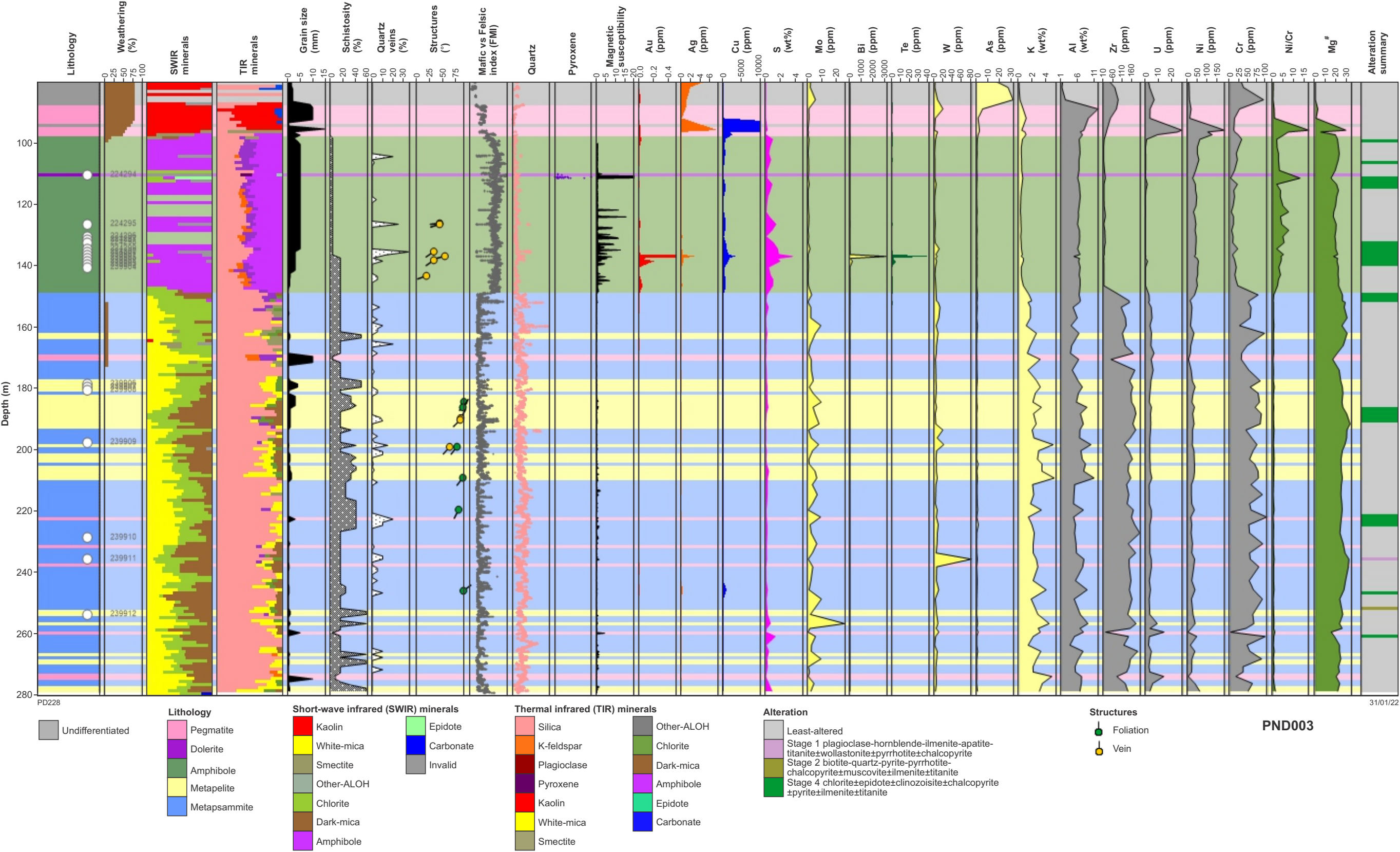
Alteration

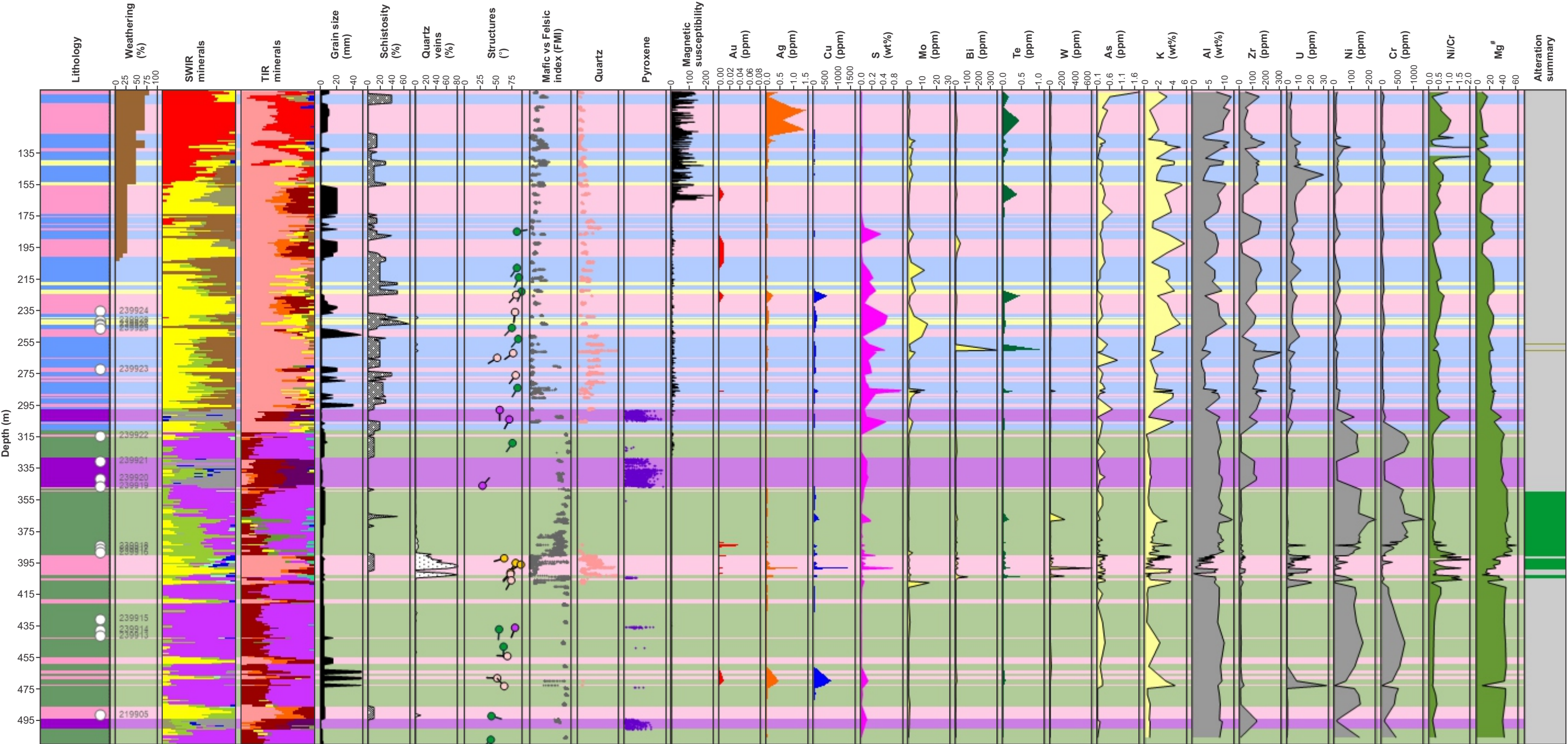
- Least-altered
- Stage 2 biotite-quartz-pyrite-pyrrhotite-titanite-ilmenite-chalcopryite±apatite±hornblende±scheelite
- Stage 2 biotite-quartz-pyrite-pyrrhotite-chalcopryite±muscovite±ilmenite±titanite
- Stage 4 chlorite±epidote±clinozoisite±chalcopryite±pyrite±ilmenite±titanite

Structures

- Foliation S1
- Foliation S2
- Pegmatite contact
- Dolerite contact
- Shear vein

PND002





PD229

Lithology

- Pegmatite
- Dolerite
- Amphibolite
- Metapelite
- Metapsammite

Short-wave infrared (SWIR) minerals

- Kaolin
- White-mica
- Smectite
- Other-ALOH
- Chlorite

- Dark-mica
- Amphibole
- Epidote
- Carbonate
- Invalid

Thermal infrared (TIR) minerals

- Silica
- K-feldspar
- Plagioclase
- Pyroxene
- Kaolin

- White-mica
- Smectite
- Other-ALOH
- Chlorite

- Dark-mica
- Amphibole
- Epidote
- Carbonate

Alteration

- Least-altered
- Stage 2 biotite-quartz-pyrite-pyrrhotite-titanite-ilmenite-chalcopryite±apatite±hornblende±scheelite
- Stage 2 biotite-quartz-pyrite-pyrrhotite-chalcopryite±muscovite±ilmenite±titanite
- Stage 4 chlorite±epidote±clinozoisite±chalcopryite±pyrite±ilmenite±titanite

Structures

- Foliation S1
- Pegmatite contact
- Dolerite contact
- Shear vein

PND005

31/01/22