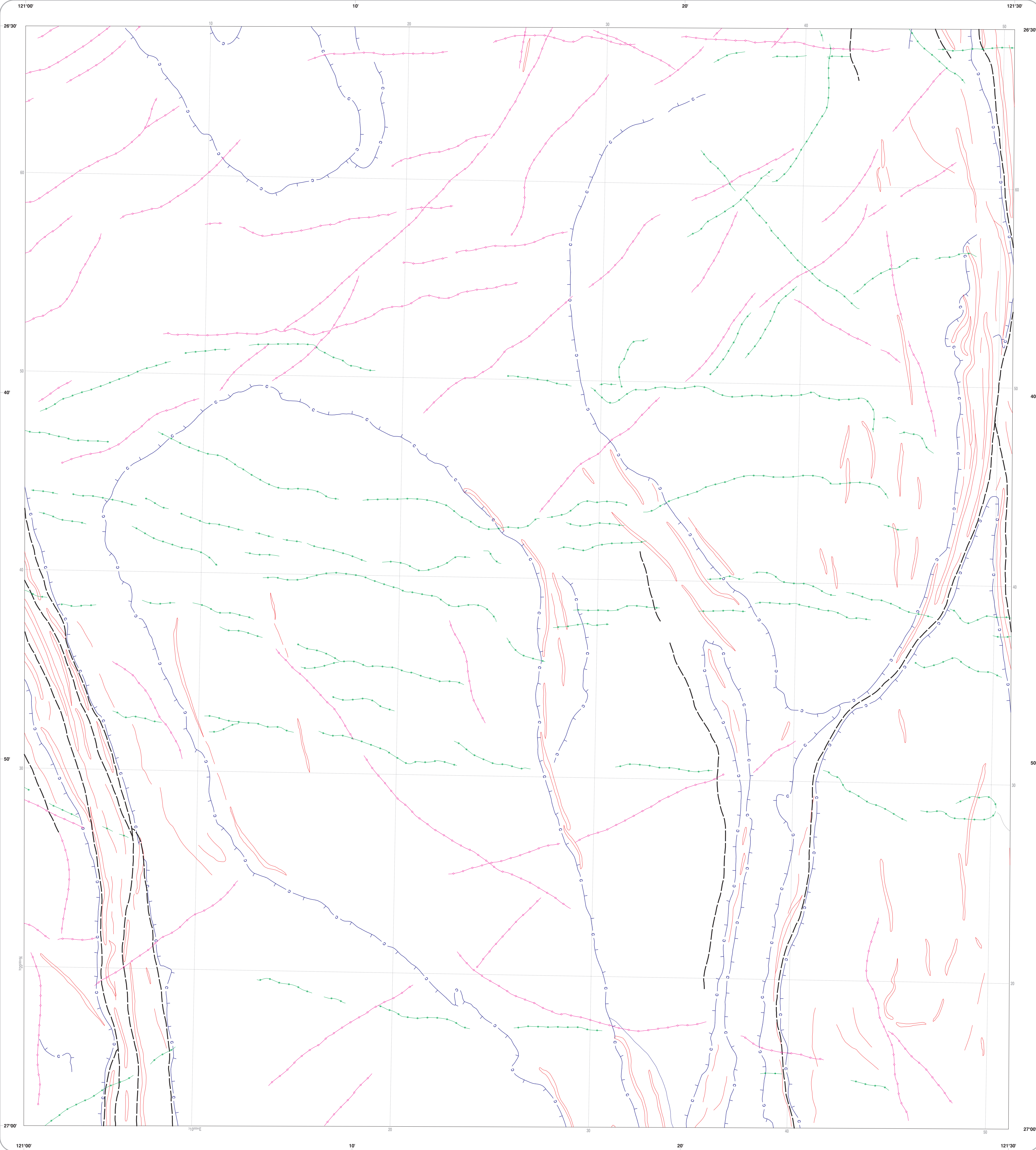


SANDALWOOD
GEOLOGICAL SURVEY OF WESTERN AUSTRALIA

1 : 100 000 AEROMAGNETIC FEATURES

SHEET 3144



Magnetic zones
narrow
wide
Discordant linear anomaly axes
high (positive anomaly)
low (negative anomaly)
Magnetic contact; ticks denote the more magnetic side
Inferred discontinuity or breaks in magnetic pattern based on disparity in trends, degree of anomaly linearity, and change in magnetic texture

This compilation of aeromagnetic features is based on airborne geophysical data acquired under the National Geoscience Mapping Accord by the Australian Geological Survey Organisation (AGSO), Commonwealth Department of Primary Industries and Energy. The interpretation is based on data presented on 1:100 000 scale profiles, contours and images of total magnetic intensity, and profiles and images of the first vertical derivative.
This map is not intended to represent a geological interpretation of aeromagnetic features.

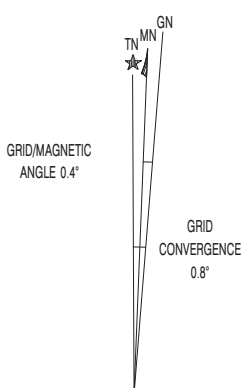
SURVEY SPECIFICATIONS

Flown by: Aerodata Holdings Ltd (World Geoscience Corporation Ltd)
Date flown: 1990-1991
Line spacing: 400 m
Line direction: 090-270 degrees
Terrain clearance: 50 m above ground level
Sampling interval: 12 m
Instrument: Cs vapour magnetometer
Data acquisition and reduction: Aerodata Holdings Ltd (World Geoscience Corporation Ltd)
IGRF removed: 1990



SHEET INDEX

JARVIS 2547	THREE RIDGES 2547	PEAK HILL 2547	WARRA 2547	FARRARA 2547	METANA 2547	PROCES 2547	WEDRA 2547	STANLEY 2547	KARRARA 2547
BRHA 2548	THORANA 2548	THORANA 2548	THORANA 2548	THORANA 2548	THORANA 2548	THORANA 2548	THORANA 2548	THORANA 2548	THORANA 2548
CLONBERRY 2549	CLONBERRY 2549	CLONBERRY 2549	CLONBERRY 2549	CLONBERRY 2549	CLONBERRY 2549	CLONBERRY 2549	CLONBERRY 2549	CLONBERRY 2549	CLONBERRY 2549
SARAWATTA 2549	SARAWATTA 2549	SARAWATTA 2549	SARAWATTA 2549	SARAWATTA 2549	SARAWATTA 2549	SARAWATTA 2549	SARAWATTA 2549	SARAWATTA 2549	SARAWATTA 2549
NORTHMAN 2549	NORTHMAN 2549	NORTHMAN 2549	NORTHMAN 2549	NORTHMAN 2549	NORTHMAN 2549	NORTHMAN 2549	NORTHMAN 2549	NORTHMAN 2549	NORTHMAN 2549
WIDLEY 2549	WIDLEY 2549	WIDLEY 2549	WIDLEY 2549	WIDLEY 2549	WIDLEY 2549	WIDLEY 2549	WIDLEY 2549	WIDLEY 2549	WIDLEY 2549



True north, grid north and magnetic north are shown diagrammatically for the centre of the map. Magnetic north is correct for 1984 and moves easterly by 0.1° in five years.



DEPARTMENT OF MINERALS AND ENERGY
HON. GEORGE CASH, J.P., M.L.C.
MINISTER FOR MINES
K. R. PERRY, DIRECTOR GENERAL



AGSO
AUSTRALIAN
GEOLOGICAL
SURVEY ORGANISATION



PETRO GILL
DIRECTOR, GEOLOGICAL SURVEY
OF WESTERN AUSTRALIA

NGMA
PRODUCT OF THE NATIONAL
GEOSCIENCE MAPPING ACCORD

SCALE 1:100 000
TRANSVERSE MERCATOR PROJECTION
Grid lines indicate 10 000 metre interval of the Australian Map Grid Zone 51
Metres
Kilometres

Aeromagnetic interpretation by World Geoscience Corporation Ltd
Geophysical Project Manager, S.H.D. Howard
Aeromagnetic data capture by Cadgraphics
Edited by C. Strong and G. Loan
Cartography by S. Colapay
Published by the Geological Survey of Western Australia. Copies available from the Mining Information Centre, Department of Minerals and Energy, 100 Plain Street, East Perth, WA, 6004
Phone (08) 222 3450, Fax (08) 222 3444
This map is also available in digital form.
Persons who purchase this information in any format may only reproduce it for their own use and not for publication or resale in any form, except with the written permission of the Director, Geological Survey of Western Australia.

AEROMAGNETIC FEATURES
SANDALWOOD
SHEET 3144
FIRST EDITION 1996

© Western Australia