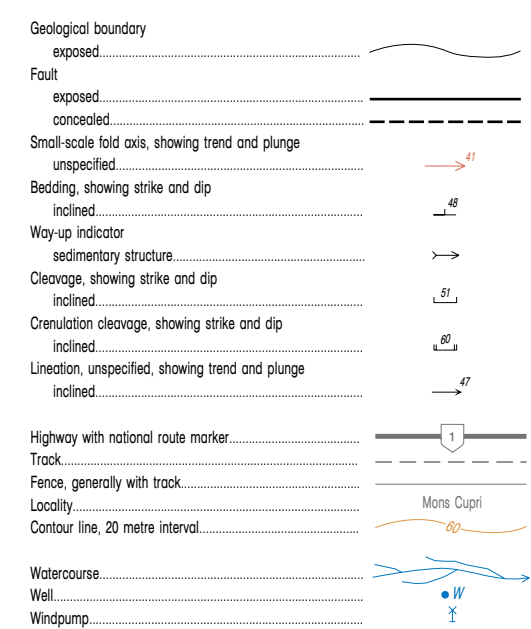


REFERENCE FOR PLATES 1, 2A, 2B, and 2C

PLATE 1

MONS CUPRI For location see Inset 1

SYMBOLS



DATA DIRECTORY

Theme	Data Source	Date	Curriculum	Agency
Geology	GSWA	1998–2001		Dept of Industry and Resources
Coastline	TENAGRAH	FEB 2003		Dept of Industry and Resources
Horizontal control	GSWA	FEB 2003		Dept of Industry and Resources
Topographic nomenclature	GEONAMA	2003		Dept of Land Information
Topography	Base maps from State Exploration (Australia)	2002		State Exploration (Australia)

Forces mapping by G. Pike (Shell Deepwater, USA) 1998–2001 and regional geology by R. H. Smithies (GSWA) 1997

Edited by C. Strong, G. Hall, and G. Loo

Cartography by G. Wright and P. Taylor

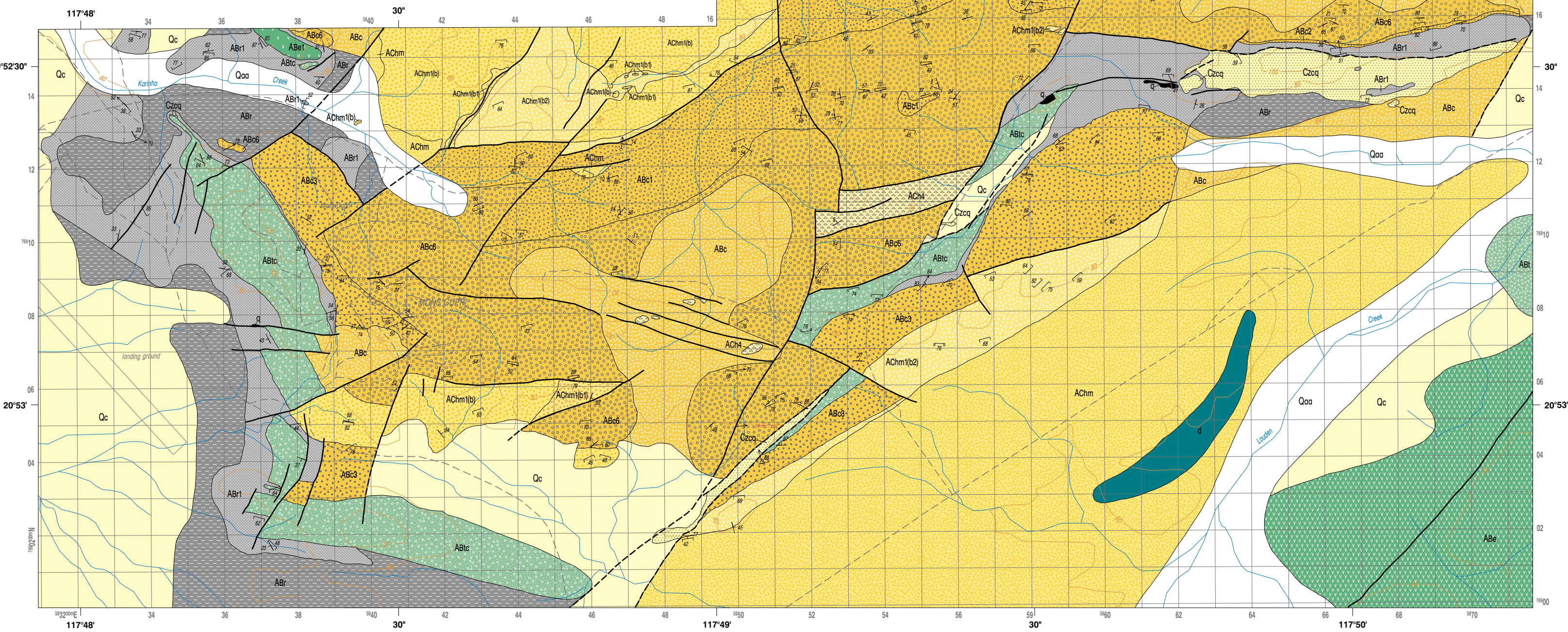
Published by the Geological Survey of Western Australia. Digital and hard copy of this map are available from the Information Centre, Department of Industry and Resources, 100 Plain Street, East Perth, WA, 6004. Phone (08) 9222 3455, Fax (08) 9222 3444. Web: www.doir.wa.gov.au. Email: geologicalsurvey@doir.wa.gov.au

The recommended reference for Plate 1 is:

PIKE, G. and SMITHIES, R. H. 2005. Geology of areas within the Whim Creek greenstone belt, Pilbara Craton, Western Australia: Mons Cupri (scale 1:10 000). In: *Archean volcanic and sedimentary rocks of the Whim Creek greenstone belt, Pilbara Craton, Western Australia* by G. PIKE, R. A. F. OLS, and A. H. HODMAN. Western Australia Geological Survey Report 101, Plate 1.

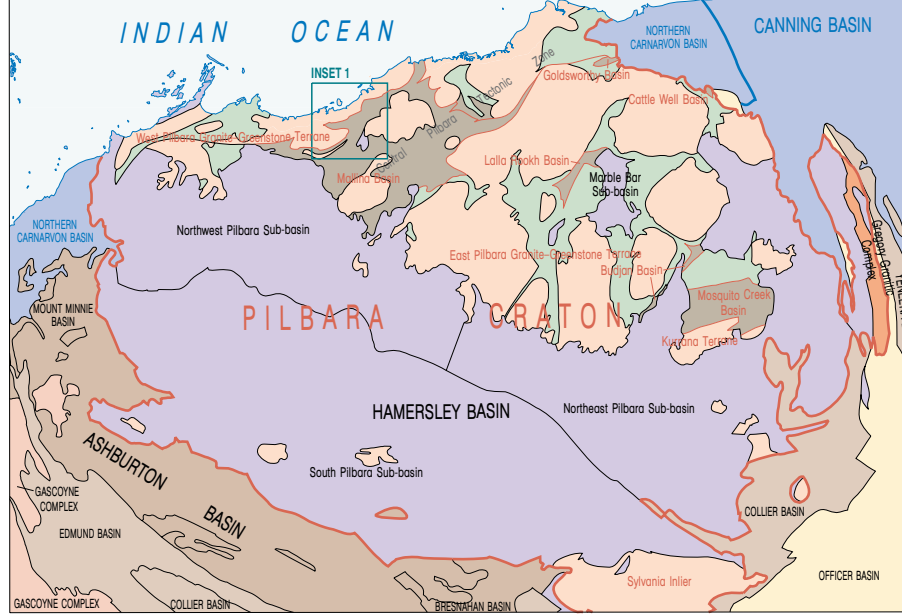
The recommended reference for Plate 2 is:

PIKE, G. and SMITHIES, R. H. 2005. Geology of areas within the Whim Creek greenstone belt, Pilbara Craton, Western Australia: Good Luck Well, Red Hill, and Salt Creek (scale 1:10 000). In: *Archean volcanic and sedimentary rocks of the Whim Creek greenstone belt, Pilbara Craton, Western Australia* by G. PIKE, R. A. F. OLS, and A. H. HODMAN. Western Australia Geological Survey Report 101, Plate 2.

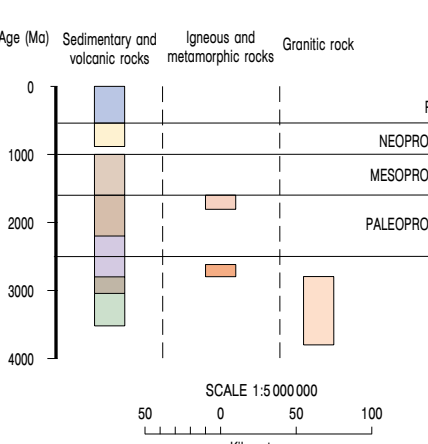


TECTONIC UNITS

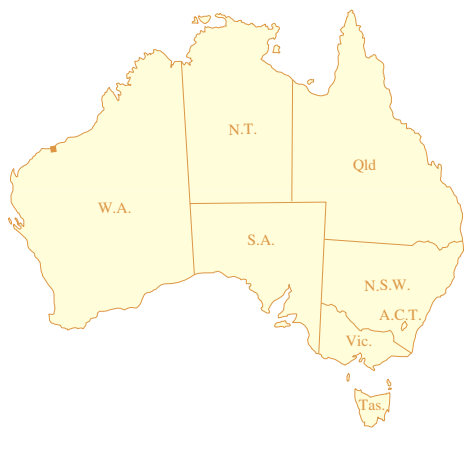
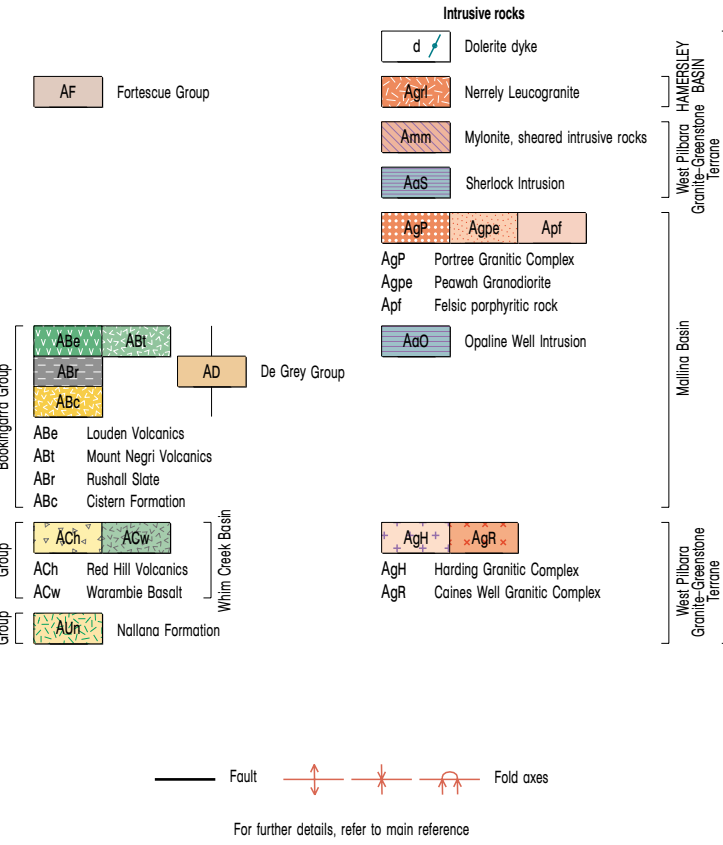
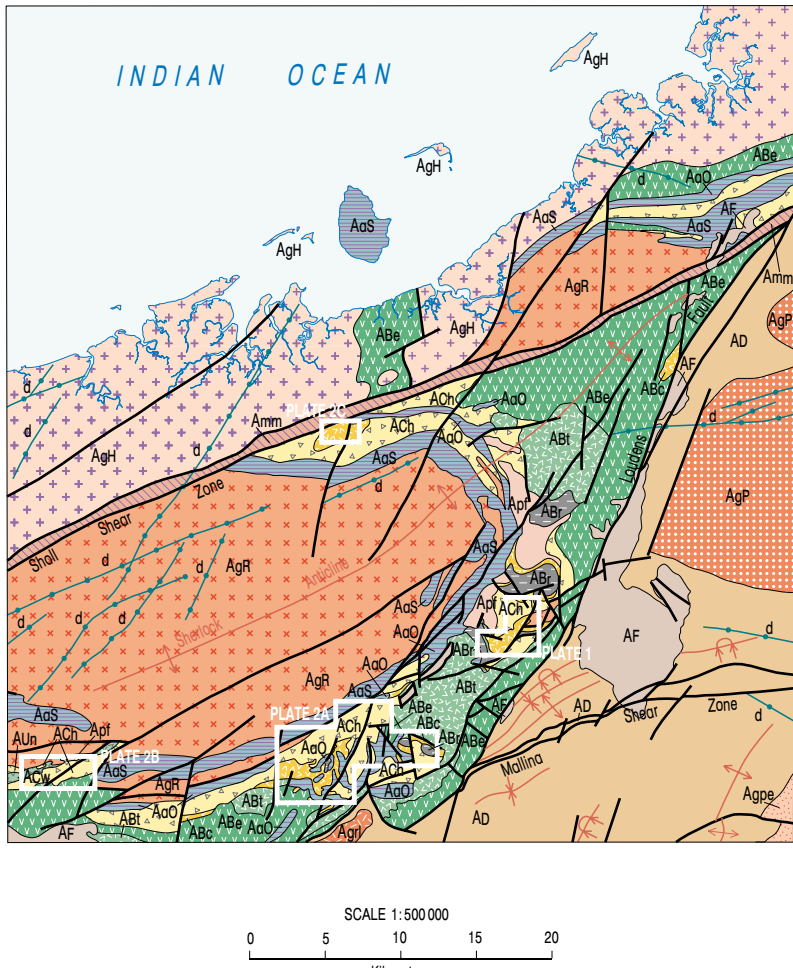
REGIONAL SETTING OF WHIM CREEK AREA (tectonic units modified after Tyler and Hocking, 2001)



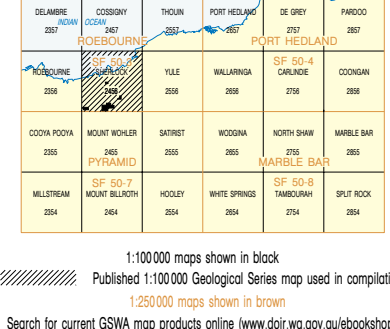
REFERENCE: TYLER, I. M. and HOCKING, R. M. 2001. Tectonic units of Western Australia (scale 1:250 000). Western Australia Geological Survey.



INSET 1 INTERPRETED BEDROCK GEOLOGY OF WHIM CREEK AREA

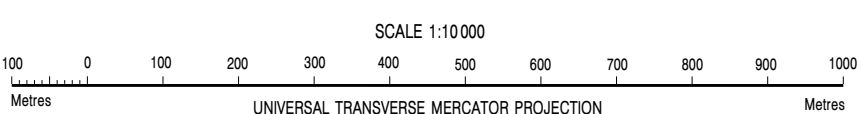


SHEET INDEX



Department of Industry and Resources
ALAN CARPENTER, M.L.A. MINISTER FOR STATE DEVELOPMENT
JIM LIMERICK, DIRECTOR GENERAL

Geological Survey of Western Australia
TIM GREEN, DIRECTOR



UNIVERSAL TRANSVERSE MERCATOR PROJECTION
HORIZONTAL DATUM: GEODETIC DATUM OF AUSTRALIA 1984
VERTICAL DATUM: AUSTRALIAN HEIGHT DATUM
Grid lines indicate 100 metre interval of the Map Grid of Australia Zone 50


The Map Grid of Australia (MGA) is based on the Geocentric Datum of Australia 1984 (GDA84).
GDA84 positions are compatible with the low marks of the datum WGS84 positions.

GEOLOGICAL SURVEY OF WESTERN AUSTRALIA

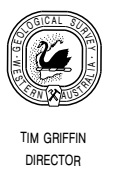
REPORT 101 PLATE 1

GEOLOGY OF AREAS WITHIN THE WHIM CREEK GREENSTONE BELT, PILBARA CRATON, WESTERN AUSTRALIA: MONS CUPRI

© Western Australia 2005
Version 1.1 – November 2005



Department of
Industry and Resources



Geological Survey of
Western Australia


ALAN CAMPBELL, B.Sc.
MANAGER FOR STATE DEVELOPMENT

JIM LINDSAY
DIRECTOR GENERAL

THE DIRECTOR
GENERAL

SCALE 1:10000
100 0 100 200 300 400 500 600 700 800 900 1000
Metres

UNIVERSAL TRANSVERSE MERCATOR PROJECTION
HORIZONTAL DATUM: GEODETIC DATUM OF AUSTRALIA 1984
VERTICAL DATUM: AUSTRALIAN HEIGHT DATUM
Grid lines indicate 10 metres interval of the 100 000 metres datum



The Map Grid Meters (MGA) is based on the Geocentric Datum of Australia 1984 (GDA84).
GDA84 profiles are compatible with one metre of the datum (MGA) profiles.

© Western Australia 2005
Version 1.1 - November 2005

FOR REFERENCE SEE PLATE 1

REPORT 101 PLATE 2

GEOLOGY OF AREAS WITHIN THE
WHIM CREEK GREENSTONE BELT,
PILBARA CRATON, WESTERN AUSTRALIA:
GOOD LUCK WELL, RED HILL, AND SALT CREEK

