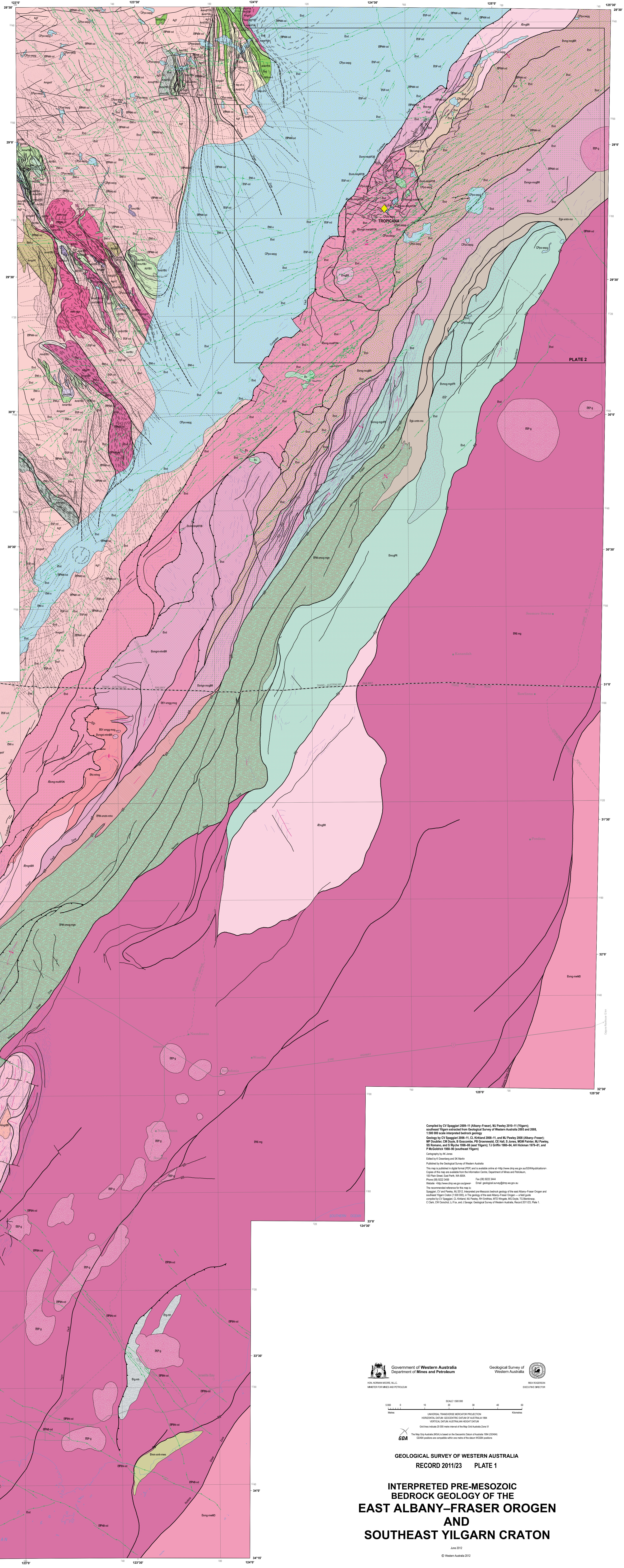
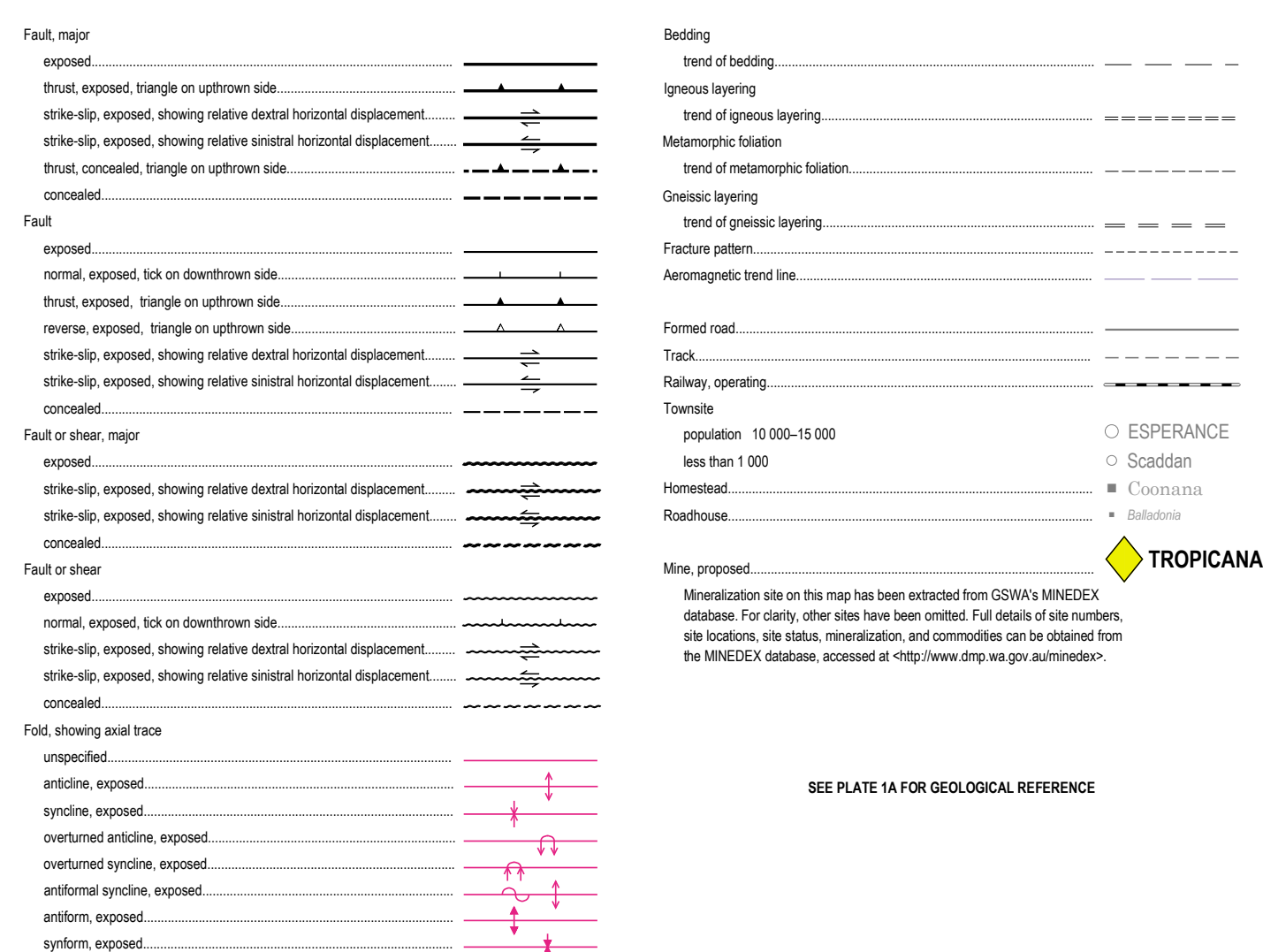
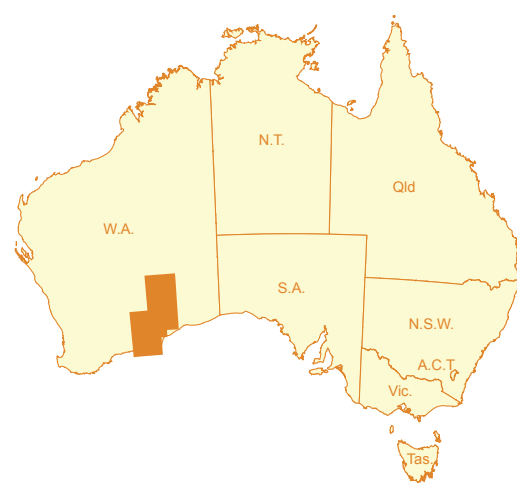


Search for current GSWA map products online <<http://www.dmp.wa.gov.au/GSWApublications>>



Compiled by VJ Seagwall from 1981 (Albury-Fraser), MJ Pawley 2010 and 2013 (Yoga);  
 southeast VJ Seagwall 2009 Geological History of Western Australia 2003 and 2003;  
 1:480 scale map of the south coast of Western Australia 1981 (Albury-Fraser)  
 Geological by VJ Seagwall 2009 Geological History of Western Australia 2003 and 2003;  
 MJ Dowling, CM Doyle, B Gossens, PJ Greenaway, CJ Hall, S Jones, MJC Petter, MJ Pawley  
 2010 and 2013 (Yoga); 1:250,000 scale map of the south coast of Western Australia 1979-81;  
 P McCordie 1986-88 (southeast VJ Seagwall)  
 Copyright to A. K. Jones  
 Edited by R. Greenaway and S. Jones  
 Published by the Geological Society of Western Australia  
 This map is published in digital format (PDF) and is available online at <http://www.gswa.gov.au/GSWAOnlineDocs>  
 Copies of this map are available from the Information Centre, Department of Mines and Petroleum,  
 100 St Georges Terrace, WA 6000.  
 Phone (08) 9222 4835 Fax (08) 9222 3444  
 Email [geologicalsurvey@gswa.gov.au](mailto:geologicalsurvey@gswa.gov.au)



HON. NORMAN MACDONALD

Government of Western Australia  
Department of Mines and Petroleum  
DMP MLC

Geological Survey of  
Western Australia



UNIVERSITY OF TORONTO

WIS AND PETROLEUM

EXECUTIVE DIRECTOR

5 000 0 10 20 SCALE 1:6

Measures: UNIVERSAL TRANSVERSE M.  
HORIZONTAL DATUM: GEOCENTRIC  
VERTICAL DATUM: AUSTR.

**GDA**

GEOLOGICAL SURVEY OF CANADA

RECORD 2011/

## INTERPRETED P

**BEDROCK GEO**  
**T ALBANY 5**

005

ALBANY-FRANKLIN AM

# OGEE

**SOUTHEAST YIL**

## ATOR

June

## References

© Western A