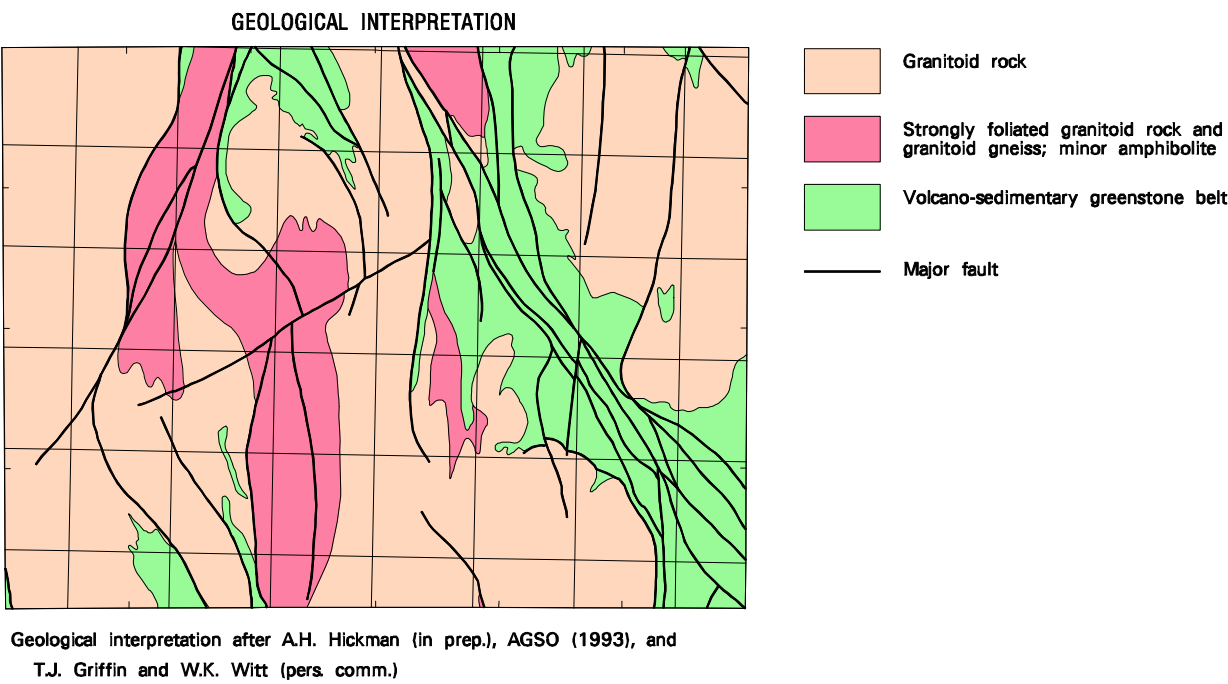
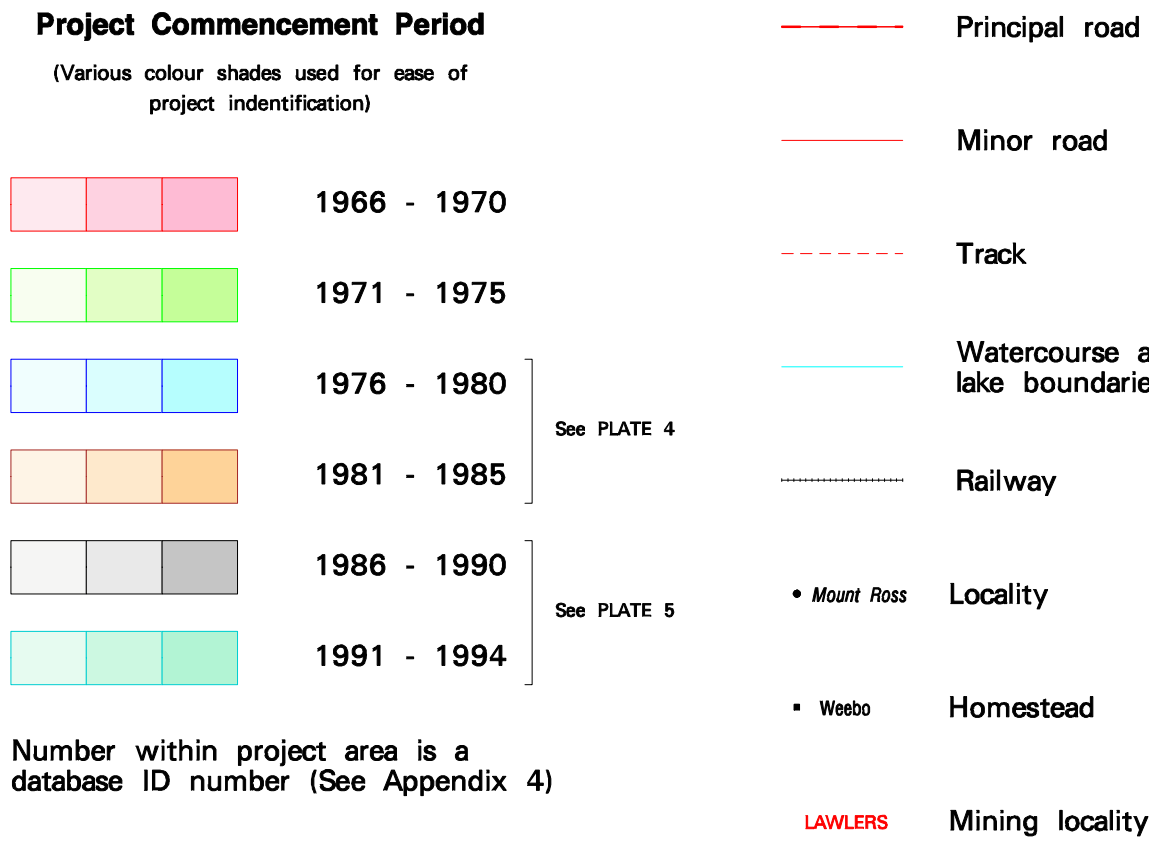


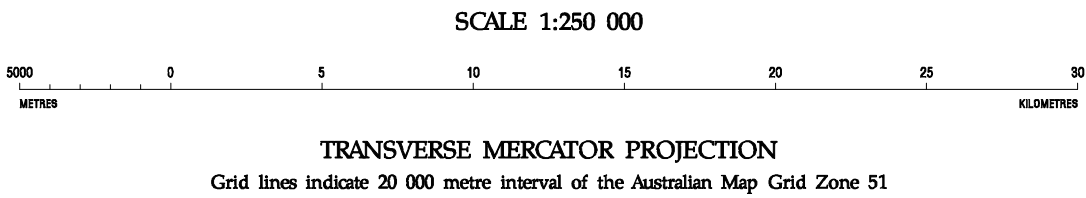
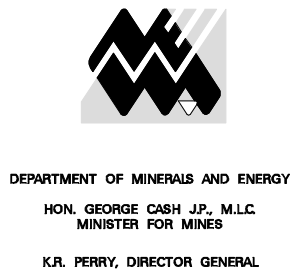
COMPANY PROJECTS WITH SURFACE
GEOCHEMISTRY DATA IN OPEN FILE
REPORTS (at January 1995)
PROJECTS COMMENCED BETWEEN 1966 AND 1975



COMPANY PROJECTS WITH SURFACE
GEOCHEMISTRY DATA IN OPEN FILE
REPORTS (at January 1995)
PROJECTS COMMENCED BETWEEN 1966 AND 1975

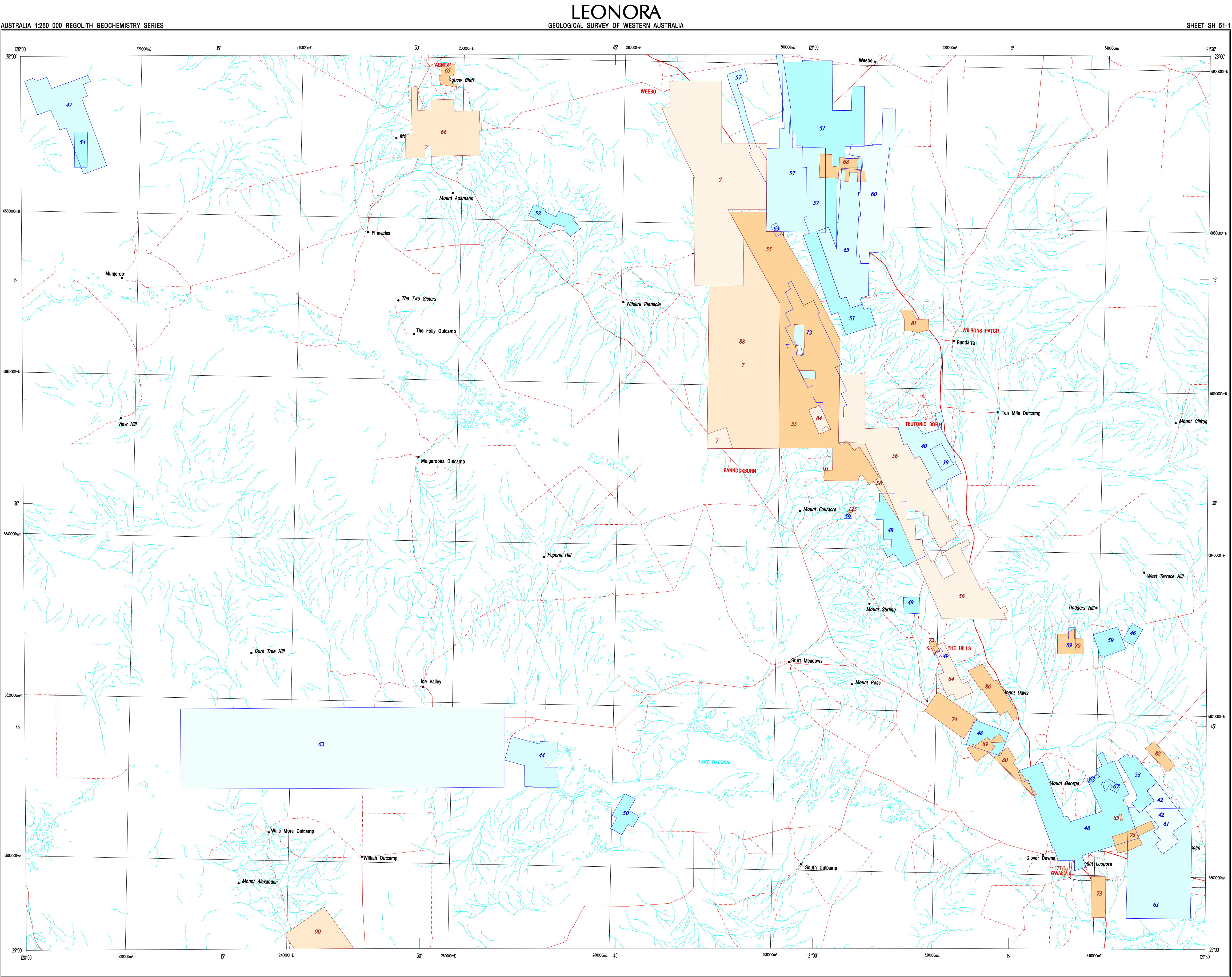
REGOLITH GEOCHEMISTRY SERIES
LEONORA
SHEET SH 51-1
FIRST EDITION 1995
© Western Australia

Edited by: C. Strong and G. Loan
Cartography by: K. Smith and S. Collopy
Topographic information supplied by the Australian Surveying and Land Information Group
This map was compiled digitally from the geochemical database held by Geological Survey Western Australia and stored in the ORACLE database management system; compiled and produced using a Geographic Information System, Arc/info, and available in digital form
Copies of this map, or extracts from the database, are available from the Department of Minerals and Energy, 100 Plain Street, East Perth, 6004



Compiled by: Z.S. Varga 1995
Compiled from open file company reports held by Geological Survey of Western Australia
The recommended reference for this map is: VARGA, Z.S., 1995, Leonora, W.A. - Company projects with surface geochemistry data in open file reports (at January 1995) projects commenced between 1966 and 1975: Western Australia Geological Survey, 1:250 000 Regolith Geochemistry Series
Some tenement boundaries have been generalized for the purpose of this map. Refer to specific project reports for precise boundary descriptions

WARNING: Inks are water soluble and will fade with prolonged exposure to light



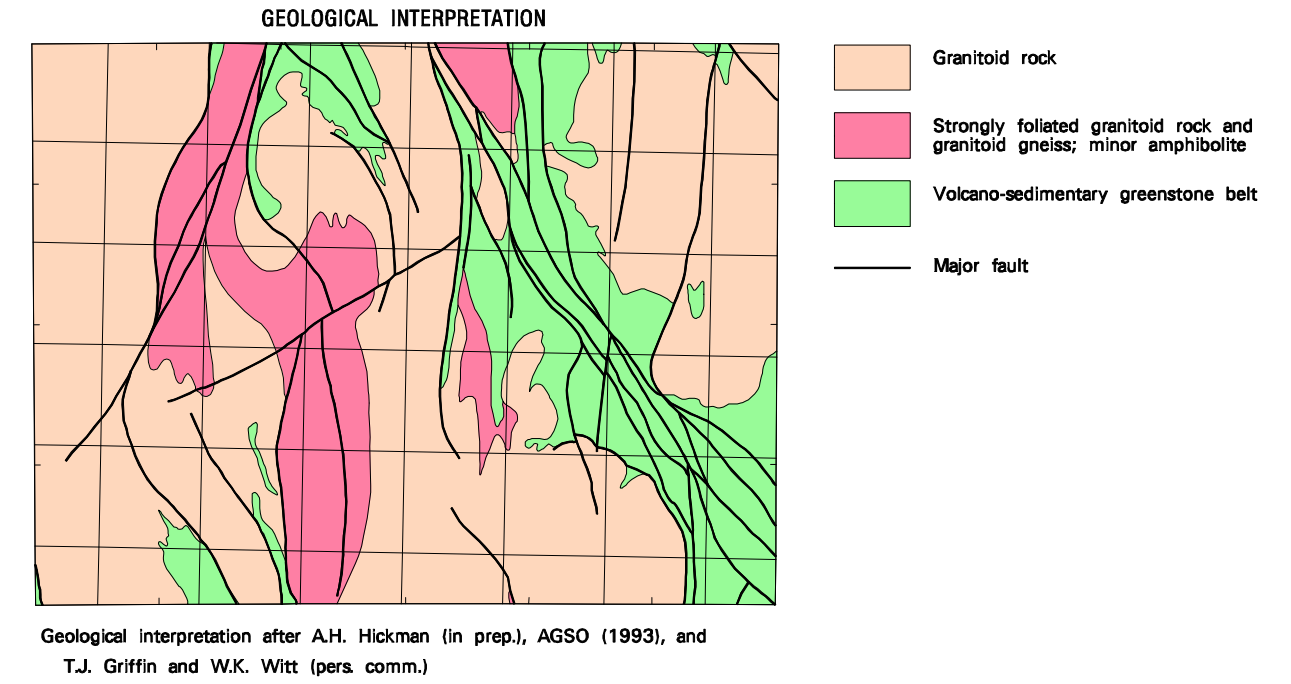
COMPANY PROJECTS WITH SURFACE
GEOCHEMISTRY DATA IN OPEN FILE
REPORTS (at January 1995)
PROJECTS COMMENCED BETWEEN 1976 AND 1985

Project Commencement Period
(Various colour shades used for ease of project identification)

	1966 - 1970	See PLATE 3
	1971 - 1975	
	1976 - 1980	See PLATE 5
	1981 - 1985	
	1986 - 1990	
	1991 - 1994	

Number within project area is a database ID number (See Appendix 4)

Principal road
 Minor road
 Track
 Watercourse and lake boundaries
 Railway
 Mount Ross Locality
 Weebo Homestead
 LAWLERS Mining locality



INDEX TO ADJOINING SHEETS

SANDSTONE SH 50-16	SIR SAMUEL SH 51-13	DUNKERTON SH 51-14
YOUAMMI SH 50-4	LEONORA SH 51-1	LAVERTON SH 51-2
BARLEE SH 50-8	MENZIES SH 51-5	EDJARDINA SH 51-6

INDEX TO 1:100 000 MAP SHEETS
WITHIN LEONORA 1:250 000

MUNJEROD 2941	WILDARA 3041	WEEBO 3141
MOUNT ALEXANDER 2940	WILBAH 3040	LEONORA 3140

COMPANY PROJECTS WITH SURFACE
GEOCHEMISTRY DATA IN OPEN FILE
REPORTS (at January 1995)
PROJECTS COMMENCED BETWEEN 1976 AND 1985

LEONORA

GEOLOGICAL SURVEY OF WESTERN AUSTRALIA

AUSTRALIA 1:250 000 REGOLITH GEOCHEMISTRY SERIES

SHEET SH 51-1

