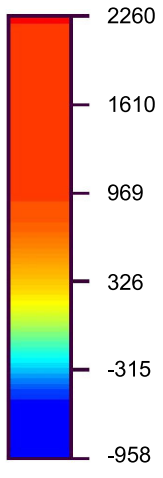
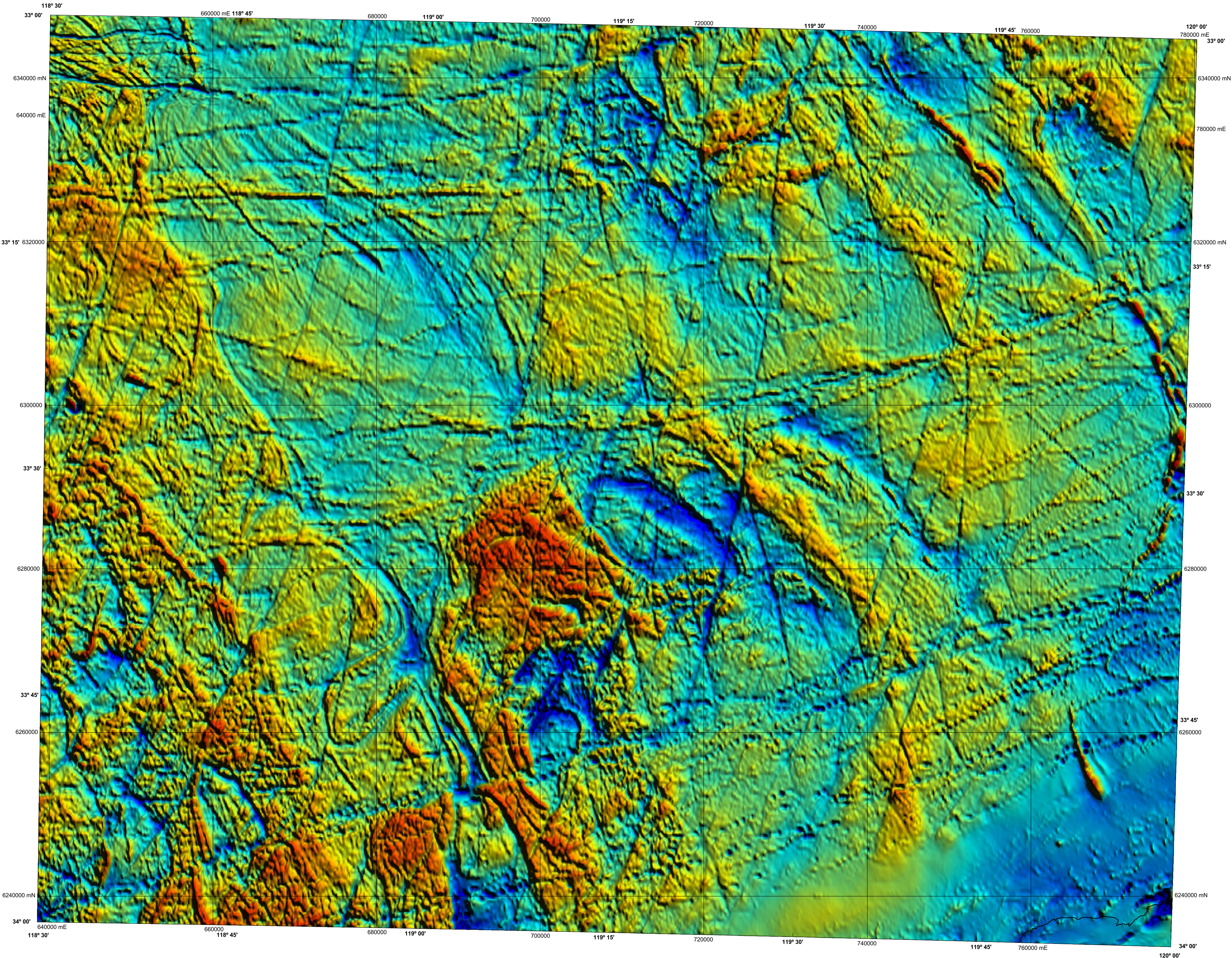


NEWDEGATE

GEOLOGICAL SURVEY OF WESTERN AUSTRALIA

1:250 000 TOTAL MAGNETIC INTENSITY IMAGE

SHEET SI 50-8



Residual values with the International Geomagnetic Reference Field removed

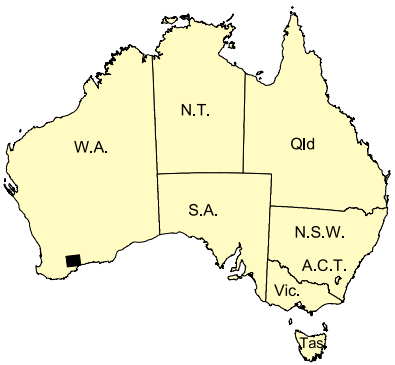
Data acquired in 2004 and 2005 were merged by Geoscience Australia with private company data, flown in 1995. These data now form part of the National Airborne Geophysical Database.

Published by the Geological Survey of Western Australia. Copies are available from the Information Centre, Department of Industry and Resources, 100 Plain Street, East Perth, WA 6004. Telephone (08) 9222 3459, Fax (08) 9222 3444, www.doir.wa.gov.au

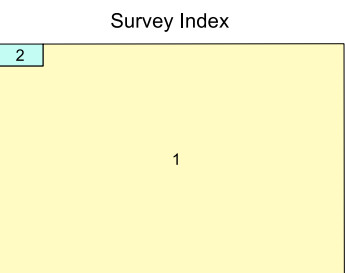
Secondary data processing R. Franklin
Image processing J. H. Watt
Cartography J. Simenetti
Geophysical Project Manager S. H. D. Howard

These data are available in digital form from the Sales Centre, Geoscience Australia, GPO Box 378, Canberra, ACT 2601. Telephone (02) 6249 9966, Fax (02) 6249 9982. Digital data are also available for download from Geoscience Australia, www.ga.gov.au/gadds

The recommended reference for this map is:
GEOLOGICAL SURVEY OF WESTERN AUSTRALIA, 2005, Newdegate, W.A. Sheet SI 50-8:
Western Australian Geological Survey, 1:250 000 Total Magnetic Intensity Image.



SHEET INDEX		
CORRIBEN SI 50-3	HYDEN SI 50-4	LAKE JOHNSON SI 51-1
DUMBLING SI 50-7	NEWDEGATE SI 50-8	RAVENSTHORPE SI 51-2
MOUNT MARGARET SI 50-11	PERSEVERANCE SI 50-12	RAVENSTHORPE SI 51-3



The image is compiled from the two surveys that are listed below, the areas covered by each are shown on the survey index.
The grid cell size is 80 m.

Survey ID	Survey name	Flight line spacing	Flight line direction	Ground clearance	Contractor	Date	Client
1	P1067 Newdegate	400 m	90° – 270°	60 m	UTS	2004 – 2005	GSWA/GA
2	Lake Grace	200 m	90° – 270°	60 m	Kevron	1995	North Ltd

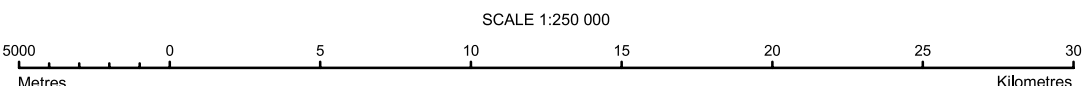


Department of
Industry and Resources

Geological Survey of
Western Australia



NGA
PRODUCT OF THE NATIONAL
GEOSCIENCE AGREEMENT



UNIVERSAL TRANSVERSE MERCATOR PROJECTION
HORIZONTAL DATUM: GEOCENTRIC DATUM OF AUSTRALIA
Grid lines indicate 20 000 metre interval of the Map Grid Australia Zone 50

The Map Grid Australia (MGA) is based on the Geocentric Datum of Australia 1984 (GDA84).
GDA84 positions are compatible within one metre of the datum WGS84 positions.

GEOLOGICAL SURVEY OF WESTERN AUSTRALIA
TOTAL MAGNETIC INTENSITY IMAGE

NEWDEGATE

SHEET SI 50-8

First Edition 2005

Version 1.0 - September 2005

© Western Australia 2005

WARNING: Inks are water soluble and will
fade with prolonged exposure to light