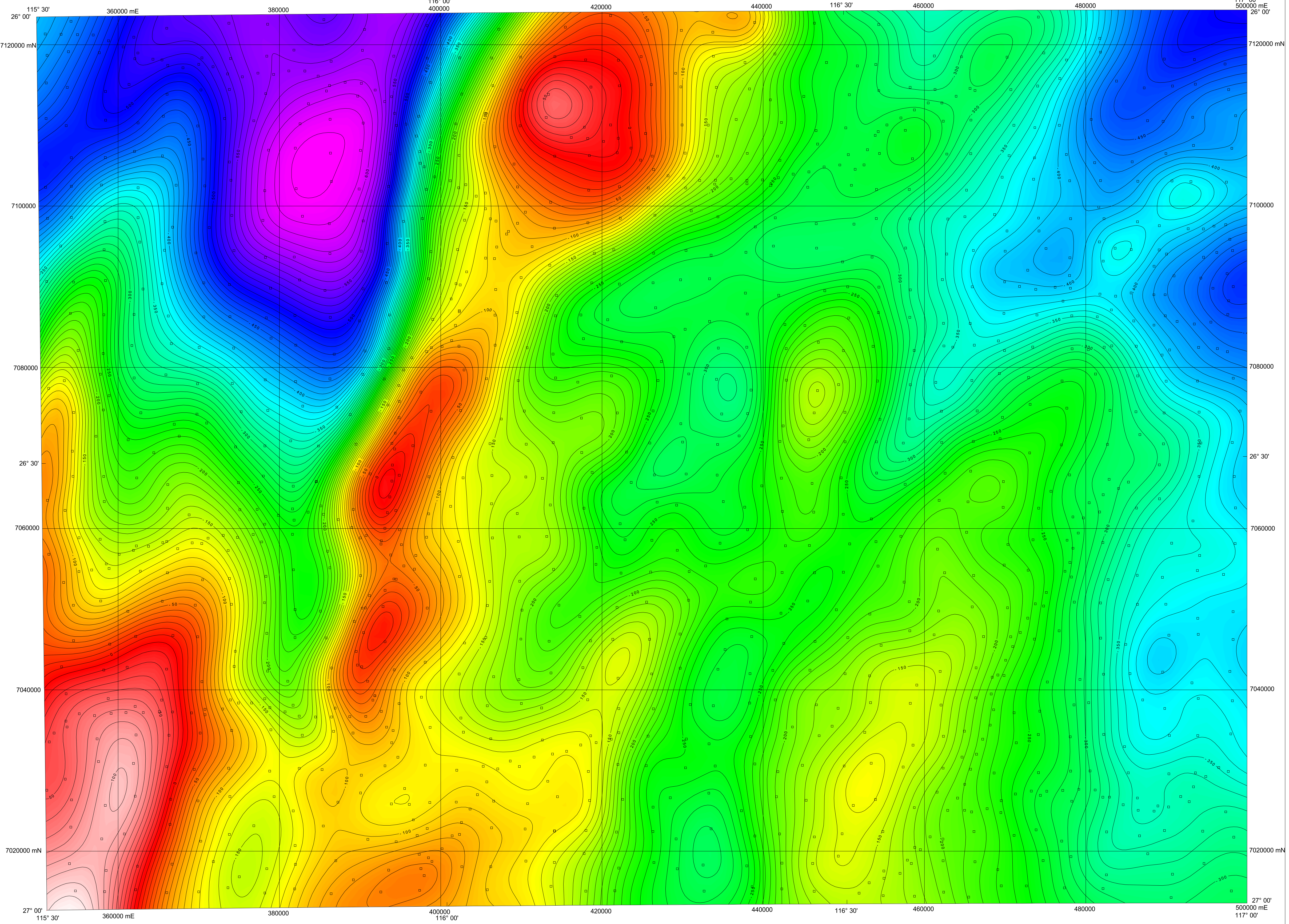


1:250 000 BOUGUER GRAVITY

BYRO
GEOLOGICAL SURVEY OF WESTERN AUSTRALIA

SHEET SG 50-10



Gravity unit

Contour value

Gravity station

1ums⁻²

-200

□

Acquisition date

Acquired by

Nominal station spacing

Gravity meter

Gravity survey accuracy

Positioning

Horizontal accuracy

Vertical accuracy

August 2000

Geological Survey of Western Australia

4 km

LaCoste and Romberg G

1.5ums

Ashtech Z-12 dual frequency GPS

5 m

0.45 m

Data reduction by

Bouguer density

Terrain correction

Geodetic datum

Height datum

Gridding software

Grid cell size

Contour interval

Image processing software

GSWA

2670 kgm⁻³

Not applied

WGS84

AHD

Interpod 3.4

1500 m

10ums

ER Mapper 6.1

Project geophysicist

Processing

Map compilation

Cartography

S. Shevchenko

K. Blundell

J. H. Watt

E. M. Theodora

Published by the Geological Survey of Western Australia, Copies available from the Information Centre, Department of Minerals and Energy, 100 Plain Street, East Perth, WA 6004.
Phone (08) 9222 3459, Fax (08) 9222 3444, www.dme.wa.gov.au

These data are also available in digital form from the Geophysical Mapping Section, AGSO
GPO Box 378, Canberra, ACT 2601
Phone (02) 6249 9222, Fax (02) 6249 9913, www.agso.gov.au/geophysics/gravimetry

Recommended Reference is: GEOLOGICAL SURVEY OF WESTERN AUSTRALIA, 2000, Byro W.A.: Western Australia Geological Survey, 1:250 000 Bouguer Gravity Image

W.A. N.T. Qld S.A. N.S.W. A.C.T. VIC

SHEET INDEX		
WIGORAMEL SG 50-9	GLENBURGH SG 50-6	ROBINSON RANGE SG 50-5
YARINCA SG 50-9	BYRO SG 50-10	BELELE SG 50-11
AJANA SG 50-13	MURGOO SG 50-14	CUE SG 50-15

WARNING: This is water soluble and will fade with prolonged exposure to light

GOVERNMENT OF WESTERN AUSTRALIA
FOR INFORMATION: B.L.C.
MINISTER FOR MINES

AGSO
AUSTRALIAN GEOLOGICAL SURVEY
NGMA
PRODUCT OF THE NATIONAL
GEOSCIENCE INFORMATION RECORD

GEOLOGICAL SURVEY OF
WESTERN AUSTRALIA
THE GEOPHYSICAL DIRECTOR

DEPARTMENT OF MINERALS
AND ENERGY
L. C. MARSDEN, DIRECTOR GENERAL

SCALE 1:250 000

0 5 10 15 20 25
Kilometres

UNIVERSAL TRANSVERSE MERCATOR PROJECTION
HORIZONTAL DATUM: WORLD GEODETIC SPHEROID 1984
Grid lines indicate 20 000 metre interval of the Map Grid Australia Zone 50

The Map Grid Australia (MGA) is based on the Geocentric Datum of Australia 1994 (GDA94).
GDA94 positions are comparable within one metre of the datum WGS84 positions

GEOLOGICAL SURVEY OF WESTERN AUSTRALIA

BOUGUER GRAVITY
BYRO
SHEET SG 50-10

© Western Australia 2000