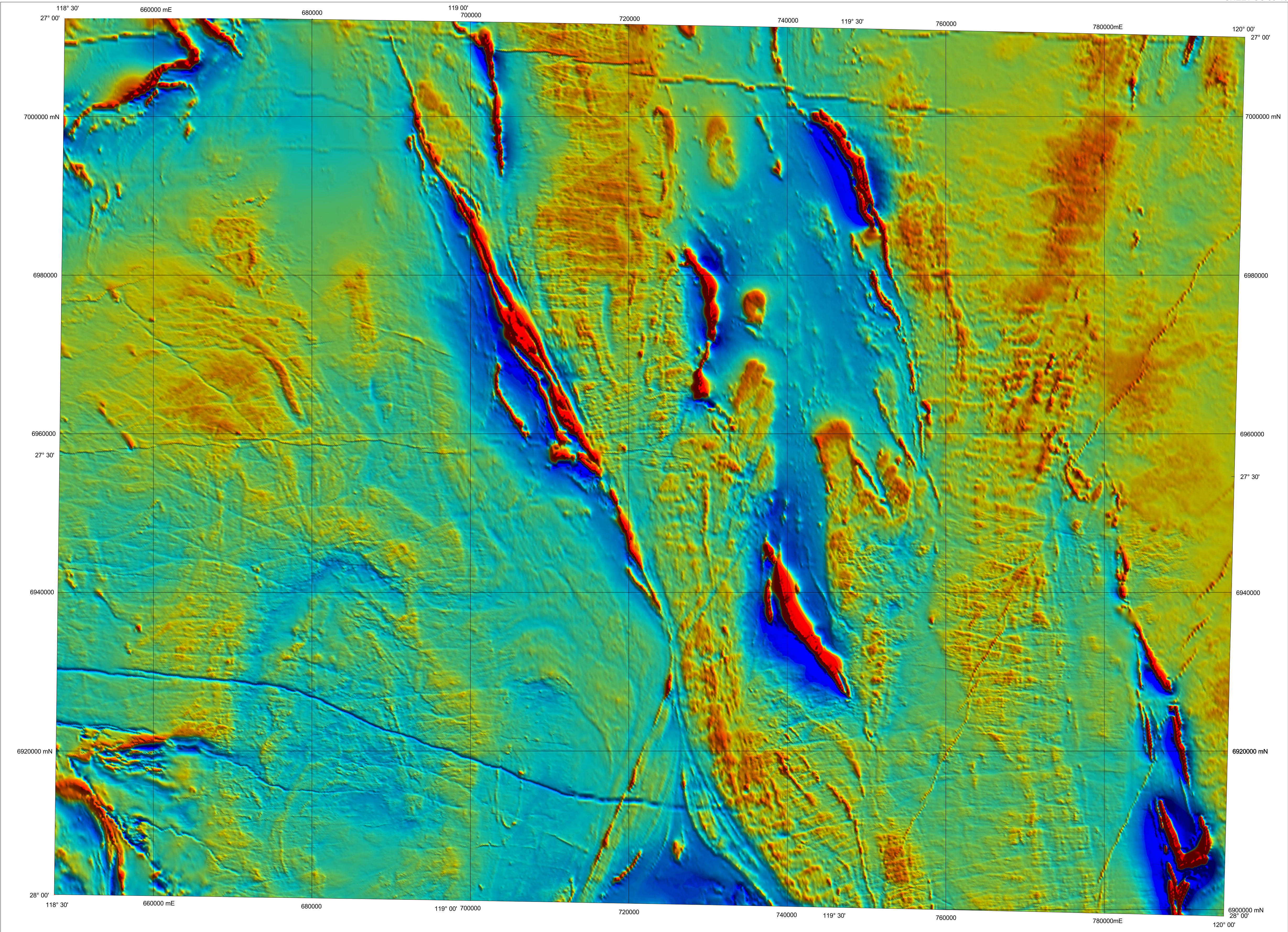


SANDSTONE

GEOLOGICAL SURVEY OF WESTERN AUSTRALIA

SHEET SG 50-16

1:250 000 TOTAL MAGNETIC INTENSITY IMAGE



Survey ID	Survey Name	Line Spacing	Line Direction	Ground clearance	Contractor	Date	Client
1	Arenite area A	250 m	180°	60 m	Kevron	1996	Stockdale Prospecting Ltd
2	Sandstone	200 m	180°	40 m	Kevron	1996	Astro Mining NL
3	Arenite area B	250 m	180°	60 m	Kevron	1996	Stockdale Prospecting Ltd
4	Lake Mason	200 m	180°	60 m	Kevron	1995	Stockdale Prospecting Ltd
5	Sandstone	400 m	90°	60 m	Kevron	2001	GSWA / AGSO

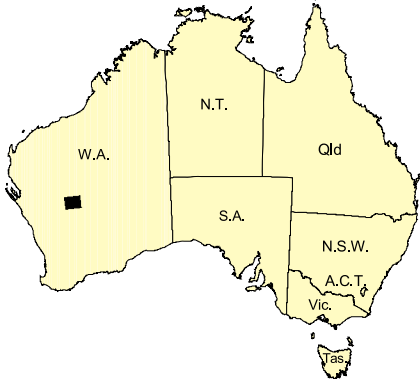
Data acquired in 2001 were merged by AGSO with private company data flown in 1995 and 1996, which now form part of the National Airborne Geophysics Database.

Published by the Geological Survey of Western Australia. Copies are available from the Information Centre, Department of Minerals and Energy, 100 Plain Street, East Perth, WA 6004 Phone (08) 9222 3459, Fax (08) 9222 3444, www.dme.wa.gov.au

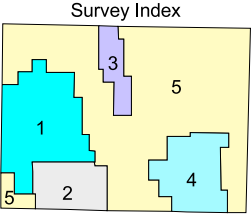
Secondary data processing R. Franklin
Image processing J. H. Watt
Cartography M. Vicentic
Geophysics Project Manager S. H. D. Howard

These data are available in digital form from AGSO Airborne Geophysical Data Sales, GPO Box 378, Canberra, ACT 2601
Phone (02) 6249 9478, Fax (02) 6249 9913, www.agso.gov.au
The recommended reference for this map is:
GEOLOGICAL SURVEY OF WESTERN AUSTRALIA, 2001, Sandstone, W.A. Sheet SG 50-16: Western Australia Geological Survey, 1:250 000 Total Magnetic Intensity Image

The dynamic range of the magnetic intensity is -1938 nT to 44820 nT. The values have been clipped in this image to improve the pixel colours, which have been enhanced using histogram equalisation. Pixel colours are not necessarily the same as that used for images of adjacent or overlapping areas in this series



SHEET INDEX		
BELELE SG 50-11	GLENGARRY SG 50-12	WILUNA SG 51-9
CUE SG 50-15	SANDSTONE SG 50-16	SIR SAMUEL SG 51-13
KIRKALOCKA SH 50-3	YOUANMI SH 50-4	LEONORA SH 51-1



GOVERNMENT OF WESTERN AUSTRALIA
OLIVER BROWN M.L.A.
MINISTER FOR STATE DEVELOPMENT, TOURISM
SMALL BUSINESS, OOLDFELDS EXPERIENCE



DEPARTMENT OF MINERALS
AND ENERGY
L.C. RANFORD, DIRECTOR GENERAL

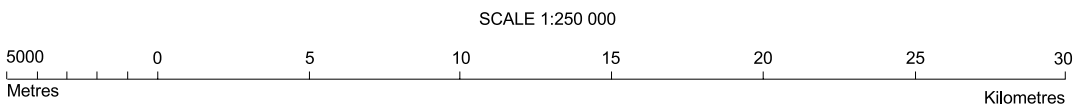


AGSO
AUSTRALIAN
GEOLOGICAL
SURVEY



GEOLOGICAL SURVEY OF
WESTERN AUSTRALIA
TM GRIPPA, DIRECTOR

NGMA
PRODUCT OF THE NATIONAL
GEOSCIENCE MAPPING ACCORD



UNIVERSAL TRANSVERSE MERCATOR PROJECTION
HORIZONTAL DATUM: WORLD GEOIDETIC SPHEROID 1984
Grid lines indicate 20 000 metre interval of the Map Grid Australia Zone 50

The Map Grid Australia (MGA) is based on the Geocentric Datum of Australia 1994 (GDA94).
GDA94 positions are compatible within one metre of the datum WGS84 positions.

GEOLOGICAL SURVEY OF WESTERN AUSTRALIA

TOTAL MAGNETIC INTENSITY
SANDSTONE
SHEET SG 50-16

First Edition 2001
© Western Australia 2001

WARNING: Inks are water soluble and will
fade with prolonged exposure to light