

# WEST YILGARN PROJECTS

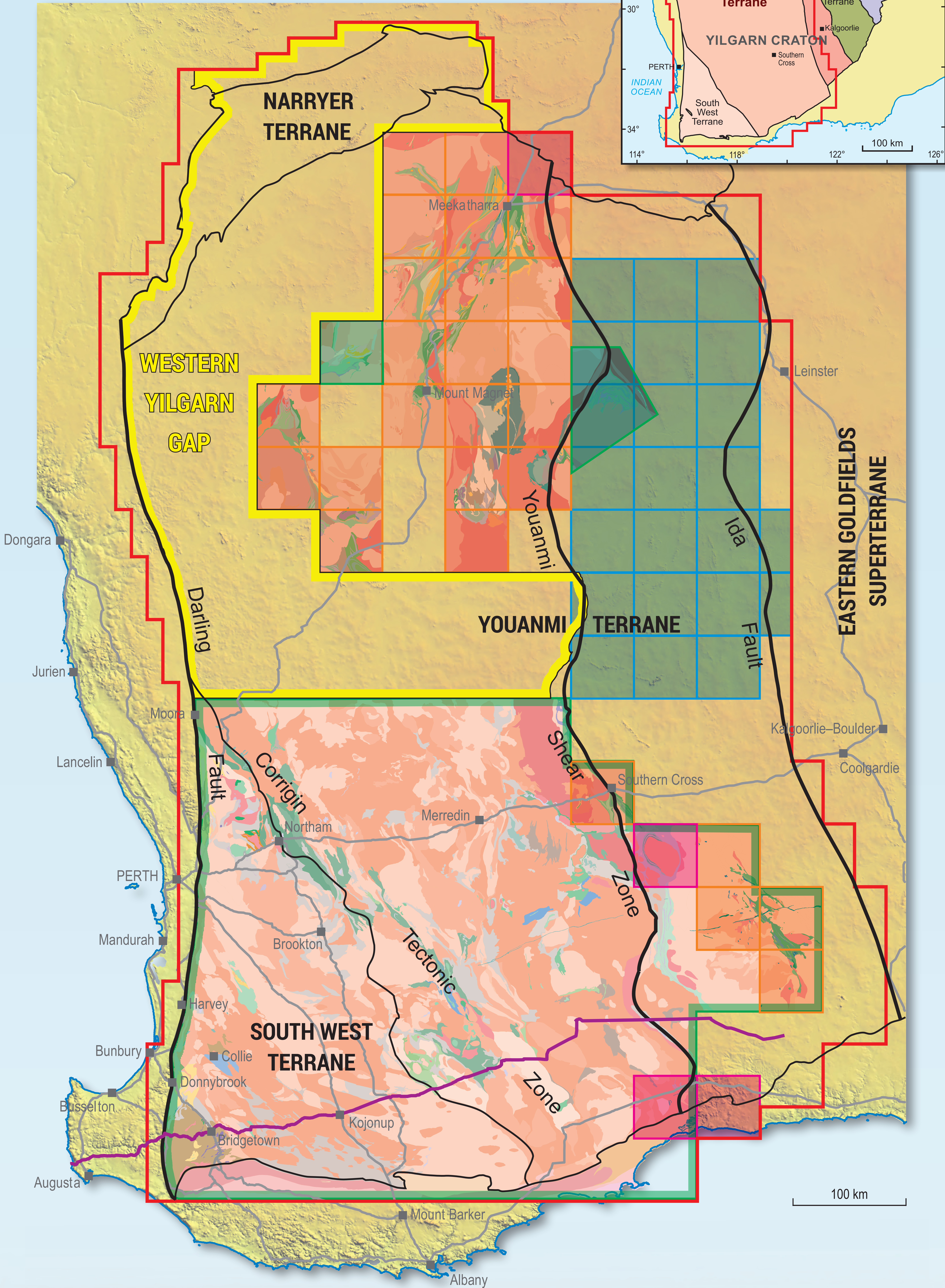
## Map of the west Yilgarn project area

The map shows the extent and scale of available interpreted bedrock geology highlighting the knowledge gap of the western margin of the Yilgarn Craton

EXPLORATION  
INCENTIVE  
SCHEME

- Project area
- 1:100 000 regolith–landform geology
- 1:100 000 surface geology
- 1:100 000 interpreted bedrock geology (digital only)
- 1:500 000 interpreted bedrock geology
- Earlier mapping not merged into data layers
- Knowledge gap
- Proposed 2D active seismic line (early 2023)

For more information, contact:  
Klaus Gessner (klaus.gessner@dmirs.wa.gov.au)



Government of Western Australia  
Department of Mines, Industry Regulation  
and Safety

[www.dmirs.wa.gov.au](http://www.dmirs.wa.gov.au)

Geological Survey of  
Western Australia

