



Government of Western Australia
Department of Mines and Petroleum

Calendar 2017



Geological Survey of
Western Australia





Monday	Tuesday	Wednesday	Thursday	Friday	Saturday	Sunday
30	31					New Year's Day 1
New Year's Day holiday 2	3	4	5	6	7	8
9	10	11	12	13	14	15
16	17	18	19	20	21	22
23	24	25	Australia Day 26	27	28	29



Geological Survey of
Western Australia



January
www.dmp.wa.gov.au/GSWA

Bryozoan limestone in the type section of the Calytrix Formation (drillcore from 202.65 m in drillhole Calytrix 1). The limestone represents a warm-water interlude in the Early Permian glacial Grant Group, Canning Basin



Monday	Tuesday	Wednesday	Thursday	Friday	Saturday	Sunday
		1	2	3	4	5
6	7	8	9	10	11	12
13	14	15	16	17	18	19
20	21	22	23	 GSWA Open Day 24	25	26
27	28					



Geological Survey of
Western Australia



February
www.dmp.wa.gov.au/GSWA

Margaret River cuts through the Mueller Ranges. Paleoproterozoic Hobberson Dolomite (Crowhurst Group; foreground) is unconformably overlain by the Neoproterozoic Louisa Downs Group (background). Helicopter-aided sampling for detrital zircon geochronology is part of a study of sedimentary provenance across the Proterozoic of northern Western Australia



Monday	Tuesday	Wednesday	Thursday	Friday	Saturday	Sunday
		1	2	3	4	5
Labour Day (WA) 6	7	8	9	10	11	12
13	14	15	16	17	18	19
20	21	22	23	24	25	26
27	28	29	30	31		



Geological Survey of
Western Australia



March

www.dmp.wa.gov.au/GSWA

*Storm clouds of quartz over a verdant forest of epidote.
The sample, from Turee Creek Station in the Ashburton Basin,
was donated by Australian Outback Mining and is on display
in Mineral House. Longest crystal at right-hand edge is 15 mm*



Monday	Tuesday	Wednesday	Thursday	Friday	Saturday	Sunday
					1	Geologists' Day 2
3	4	5	6	7	8	9
10	11	12	13	Good Friday 14	Easter Saturday 15	Easter Day 16
Easter Monday 17	18	19	20	21	22	23
24	Anzac Day 25	26	27	28	29	30





Monday	Tuesday	Wednesday	Thursday	Friday	Saturday	Sunday
1	2	3	4	5	6	7
8	9	10	11	12	13	14
15	16	17	18	19	20	21
22	23	24	25	26	27	28
29	30	31				



Geological Survey of
Western Australia



May

www.dmp.wa.gov.au/GSWA

*A painter's palette of browns, reds, oranges, and creams;
selective iron-oxide staining of the Tumblagooda Sandstone
along the Murchison River, northeast of Kalbarri*



Monday	Tuesday	Wednesday	Thursday	Friday	Saturday	Sunday
			1	2	3	4
WA Day 5	6	7	8	9	10	11
12	13	14	15	16	17	18
19	20	21	22	23	24	25
26	27	28	29	30		



Geological Survey of
Western Australia



June

www.dmp.wa.gov.au/GSWA

*Possession Point and Vancouver Peninsula, Albany.
A long, narrow peninsula formed by three tombolos, each with
pristine white beaches on either side, tying low, rounded islands
of granite to the mainland. Wind-pruned coastal heathland and
extensive bare granite outcrops are typical of the southern coast*



Monday	Tuesday	Wednesday	Thursday	Friday	Saturday	Sunday
31					1	2
3	4	5	6	7	8	9
10	11	12	13	14	15	16
17	18	19	20	21	22	23
24	25	26	27	28	29	30



Geological Survey of
Western Australia



July

www.dmp.wa.gov.au/GSWA

*Out in the midday sun!
Geologist making field observations in
spinifex-covered hills of Proterozoic Bungle Bungle
Dolomite, east Kimberley*



Monday	Tuesday	Wednesday	Thursday	Friday	Saturday	Sunday
	1	2	3	4	5	6
7	8	9	10	11	12	13
14	15	16	17	18	19	20
21	22	23	24	25	26	27
28	29	30	31			



Geological Survey of
Western Australia



August

www.dmp.wa.gov.au/GSWA

*Survival in the face of vertical adversity — modern trees in ancient
tidal sandflats of mid-Paleozoic Tumblagooda Sandstone;
Four Ways, Murchison Gorge, Kalbarri National Park*



Monday	Tuesday	Wednesday	Thursday	Friday	Saturday	Sunday
				1	2	3
4	5	6	7	8	9	10
11	12	13	14	Petroleum Open Day 15	16	17
18	19	20	21	22	23	24
Queen's Birthday (WA) 25	26	27	28	29	30	



Geological Survey of
Western Australia



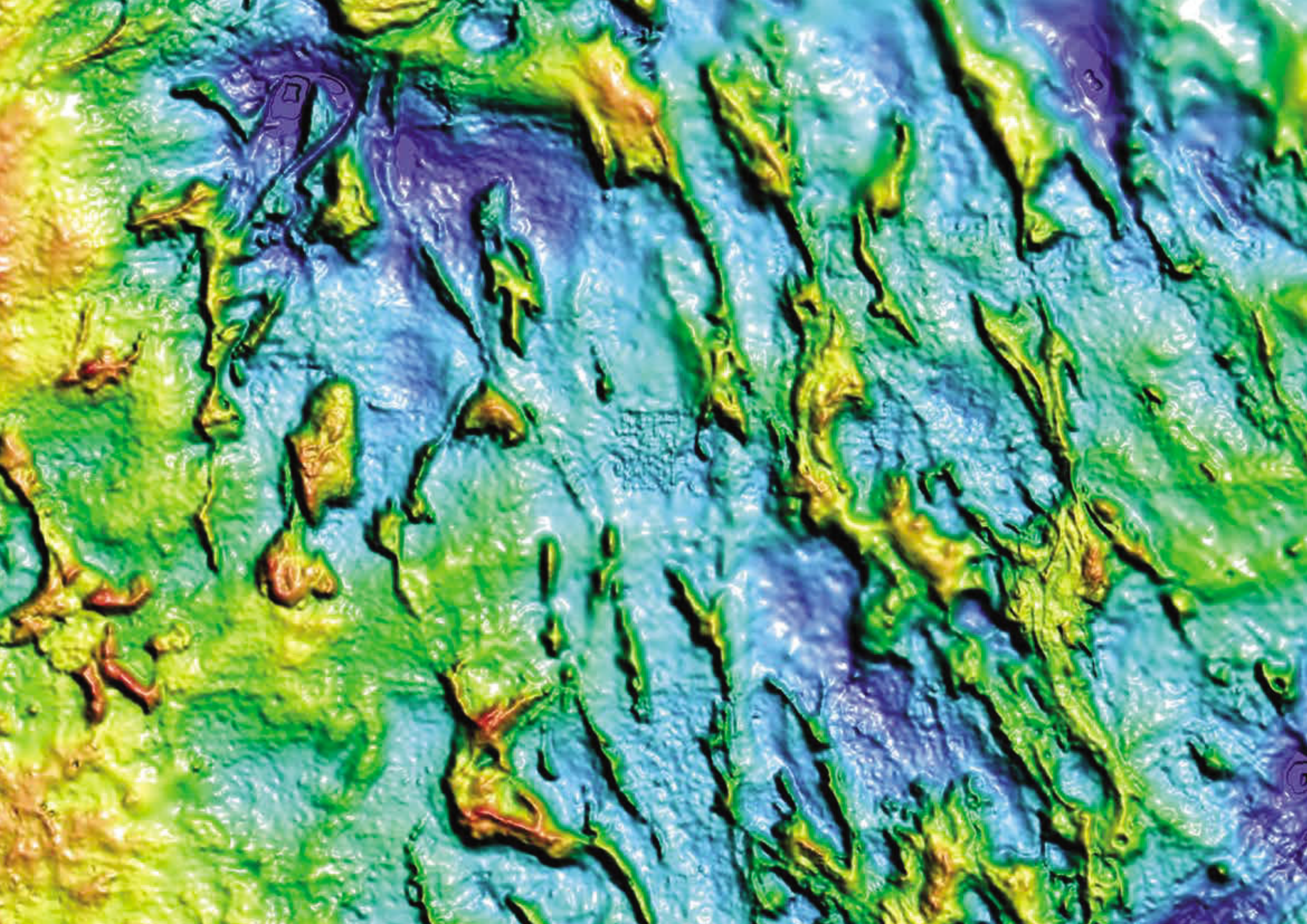
September
www.dmp.wa.gov.au/GSWA

Purple Ptilotus flourish in the deep red soil adjacent to greenstone belts in the Murchison region of the Yilgarn Craton. Here, the colluvium consists of banded iron-formation, vein quartz, and rare granitic fragments



Monday	Tuesday	Wednesday	Thursday	Friday	Saturday	Sunday
30	31					1
2	3	4	5	6	7	8
9	10	11	12 International Women in Geoscience Day	13	14	15
16	17	18	19	20	21	22
23	24	25	26	27	28	29





Monday	Tuesday	Wednesday	Thursday	Friday	Saturday	Sunday
		1	2	3	4	5
6	7	8	9	10	Remembrance Day 11	12
13	14	GIS Day 15	16	17	18	19
20	21	22	23	24	25	26
27	28	29	30			



Geological Survey of
Western Australia



November
www.dmp.wa.gov.au/GSWA

*Hue-Saturation-Intensity image (with sun shading
from northeast) of Bouguer gravity data reveals the
greenstone belts across the Yilgarn Craton*



Monday	Tuesday	Wednesday	Thursday	Friday	Saturday	Sunday
* Saint Barbara is the patron saint of miners						
				1	2	St Barbara's Day* 3
4	5	6	7	8	9	10
11	12	13	14	15	16	17
18	19	20	21	22	23	24
Christmas Day 25	Boxing Day 26	27	28	29	30	31



Geological Survey of
Western Australia



December
www.dmp.wa.gov.au/GSWA

*A colourful cluster of sea urchins washed into a crevice within uplifted
Pleistocene reefal facies of the Tamala Limestone of the Perth Basin;
Leander Point, near Port Denison*

MINISTER FOR MINES AND PETROLEUM
Hon. Sean K L'Estrange MLA

ACTING DIRECTOR GENERAL
DEPARTMENT OF MINES AND PETROLEUM
Tim Griffin

EXECUTIVE DIRECTOR
GEOLOGICAL SURVEY OF WESTERN AUSTRALIA
Rick Rogerson

The Geological Survey of Western Australia (GSWA) is a Division of the Department of Mines and Petroleum. We carry out geoscientific studies that reveal the geological framework of Western Australia and the potential for mineral and energy resources. Our aim is to make Western Australia the preferred destination for local, national, and multinational explorers.

GSWA manages the Exploration Incentive Scheme (EIS), a State Government initiative to encourage exploration in Western Australia for the long-term sustainability of the State's resources sector.

This initiative, which started in 2009, received \$130 million funding until June 2017. State Government forward estimates flag continued funding of \$10 million per annum from Royalties for Regions (R4R) for 2017-18 and 2019-2020. The EIS aims to stimulate increased private-sector resource exploration and ultimately lead to new mineral and energy discoveries. Most of the activities in the EIS are focused in under-explored greenfields regions.

For more information on EIS go to <www.dmp.wa.gov.au/EIS>.



Government of Western Australia
Department of Mines and Petroleum



EXPLORATION
INCENTIVE SCHEME

Geological Survey of
Western Australia



The photographs for this calendar were taken by GSWA staff (rather than professional photographers) during our field activities that take us to remote and beautiful locations throughout the State. The following photographers provided the stunning images:

Arthur Mory, Bob Gozzard, Christopher Phillips, David Maidment, Ivan Zibra, John Brett, Peter Haines, Roger Hocking, Simon Johnson, and Tom Lenane

Front cover image: Dipping beds in the Osmand Range, east Kimberley. A bushfire near the horizon adds another level of complexity to GSWA's field program

Back cover image: From their vantage point on top of Mount Alexander, geologists discuss the panorama below. Volcanic rocks of the Ashburton Basin form the line of hills in the middle ground

© Images copyright Geological Survey of Western Australia 2016

National Library of Australia Card Number and ISBN
978-1-74168-715-6 (Printed) 978-1-74168-716-3 (PDF)

This calendar is also published in PDF format available online at <www.dmp.wa.gov.au/GSWApublications>.

For details and purchase of geological publications and maps by the Geological Survey of Western Australia contact:

Information Centre
Department of Mines and Petroleum
100 Plain Street
EAST PERTH WA 6004 AUSTRALIA
Telephone: +61 8 9222 3459
www.dmp.wa.gov.au/ebookshop

