



LEGEND

Total magnetic intensity contour, 25 nanotesla interval 59000
Magnetic high H
Magnetic low L

SURVEY SPECIFICATIONS

Date flown: 1988-1990
Flown by: Aerodata Holdings Ltd (World Geoscience Corporation Ltd)
Line spacing: 200 m
Line direction: 090/270 degrees
Terrain clearance: 60 m above ground level
Sampling interval: 6 m (0.1 second)

Primary processing: Aerodata Holdings Ltd (World Geoscience Corporation Ltd)
IGPF: removed
Geodetic datum: AGD66
Grid cell size: 70 m



SHEET INDEX

| | | | | | |
|-------------------|-------------------------|------------------------------|-------------------------------|-------------------------------|-------------------------------|
| MOUNT MICA 30E | RALEIGH 30E | WELLS 30E | WILMA 30E | LINE ONEY 30E | MOUNT ISA 30E |
| MENZIES 30E | SH 51-5 MOUNT 30E | MENZIES 30E | EDJUTINA 30E | EDJUTINA 30E | VERDE 30E |
| NEWMARKET 30E | DAYHART 30E | SH 51-9 KALGOORLIE 30E | SH 51-10 KALGOORLIE 30E | SH 51-10 KALGOORLIE 30E | SH 51-10 KALGOORLIE 30E |
| MOUNT MICA 30E | RALEIGH 30E | WELLS 30E | WILMA 30E | LINE ONEY 30E | MOUNT ISA 30E |



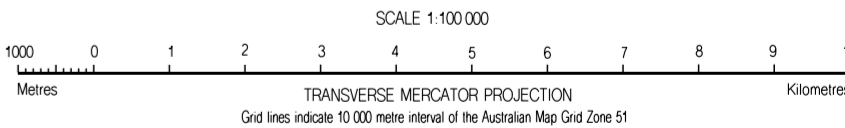
DEPARTMENT OF MINERALS AND ENERGY
HOW GEORGE CASH, J.P., M.L.C.
MINISTER FOR MINES
K. R. PERRY, DIRECTOR GENERAL



PRODUCT OF
WORLD GEOSCIENCE CORPORATION LTD.



PETER GUJ
DIRECTOR, GEOLOGICAL SURVEY
OF WESTERN AUSTRALIA



Geophysical Project Manager, Greg Steenson
Aeromagnetic compilation by J. H. Watt
Aeromagnetic data capture by Aerodata Holdings Ltd (World Geoscience Corporation Ltd)
Edited by C. Strong and G. Loan
Cartography by T. Leman

Published by the Geological Survey of Western Australia, with permission of the copyright holder.
Copies available from the Mining Information Centre, Department of Minerals and Energy,
100 Plain Street, East Perth, WA, 6004. Phone (08) 222 3459, Fax (08) 222 3444
Digital data available from the World Geoscience Corporation Ltd,
65 Broadway Road, Forest, WA, 6014. Phone (08) 273 6400, Fax (08) 273 6466

Persons who purchase this information in any form may only reproduce it for their own use
and not for publication or resale in any form, except with the written permission of the
World Geoscience Corporation Ltd

LEGEND

Total magnetic intensity contour, 25 nanotesla interval 59000
Magnetic high H
Magnetic low L

SURVEY SPECIFICATIONS

Date flown: 1988-1990
Flown by: Aerodata Holdings Ltd (World Geoscience Corporation Ltd)
Line spacing: 200 m
Line direction: 090-270 degrees
Terrain clearance: 60 m above ground level
Sampling interval: 6 m (0.1 second)

Primary processing: Aerodata Holdings Ltd (World Geoscience Corporation Ltd)
IGF: removed
Geodetic datum: AGD66
Grid cell size: 70 m



SHEET INDEX

| | | | | | |
|---------------------|------------------|------------------|------------------|------------------|-------------------|
| MOUNT MICA 308 | PALEO 308 | MELB 308 | WILMA 308 | LINE ONEY 308 | MOUNT CLAY 308 |
| MULLINE 308 | MENZIES 308 | ROCK 308 | EDJUNA 308 | EDJUNA 308 | WANDOO 308 |
| NEWMARK 308 | DAYHART 308 | BRIDG 308 | CHURCH 308 | MALDEN 308 | PAUL 308 |
| MOUNT WALTER 308 | KALGOORNE 308 | KALGOORNE 308 | KALGOORNE 308 | KALGOORNE 308 | KALGOORNE 308 |



DEPARTMENT OF MINERALS AND ENERGY
HON. GEORGE CASH, J.P., M.L.C.
MINISTER FOR MINES
K. R. PERRY, DIRECTOR GENERAL



PRODUCT OF
WORLD GEOSCIENCE CORPORATION LTD



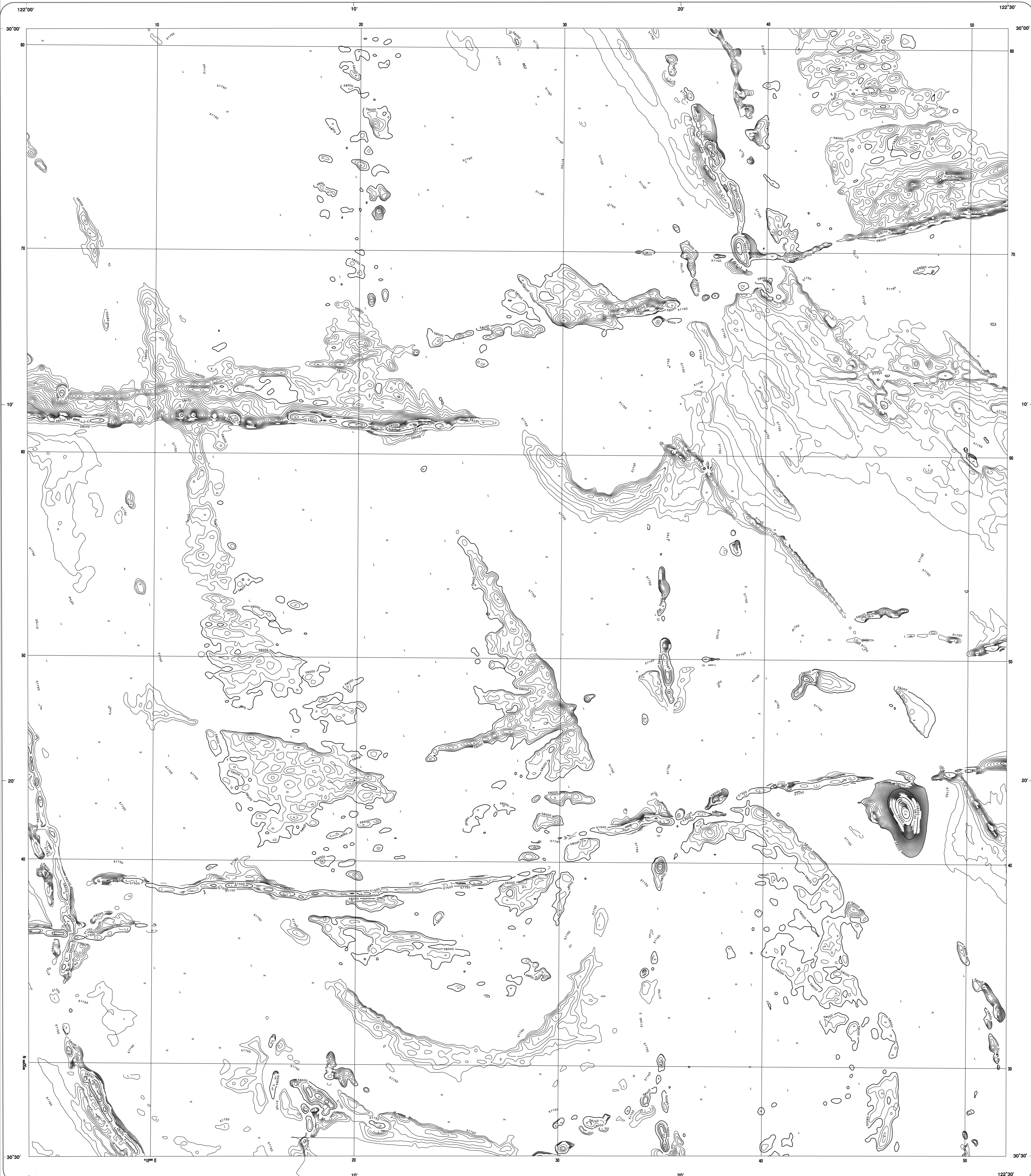
PETER GILL
DIRECTOR, GEOLOGICAL SURVEY
OF WESTERN AUSTRALIA

SCALE 1:100 000
TRANSVERSE MERCATOR PROJECTION
Grid lines indicate 10 000 metre interval of the Australian Map Grid Zone 51

Geophysical Project Manager: Greg Steenson
Aeromagnetic compilation by J. H. Watt
Aeromagnetic data capture by Aerodata Holdings Ltd (World Geoscience Corporation Ltd)
Edited by C. Strong and G. Loan
Cartography by T. Lennane

Published by the Geological Survey of Western Australia, with permission of the copyright holder.
Copies available from the Mining Information Centre, Department of Minerals and Energy,
100 Plain Street, East Perth, WA, 6004. Phone (09) 222 3459. Fax (09) 222 3444.
Digital data available from the World Geoscience Corporation Ltd,
65 Brookway Road, Floreat, WA, 6104. Phone (09) 273 6400. Fax (09) 273 6466.

Persons who purchase this information in any format may only reproduce it for their own use
and not for publication or resale in any form, except with the written permission of the
World Geoscience Corporation Ltd



LEGEND

Total magnetic intensity contour, 25 nanotesla interval 59000

Magnetic high H

Magnetic low L

SURVEY SPECIFICATIONS

Date flown: 1998-1999
Flown by: Aerodata Holdings Ltd (World Geoscience Corporation Ltd)
Line spacing: 200 m
Line direction: 095-270 degrees
Terrain clearance: 65 m above ground level
Sampling interval: 6 m (0.1 second)

Primary processing: Aerodata Holdings Ltd (World Geoscience Corporation Ltd)
IGRF: removed
Geodetic datum: AGD66
Grid cell size: 70 m



SHEET INDEX

| | | | | | |
|---------------------|----------------|----------------|----------------|------------------|-------------------|
| MOUNT MERRI 208 | PAULING 328 | MELIA 328 | MELIA 328 | LAKE OREY 328 | MOUNT GELA 328 |
| MULLINE 208 | MENZIES 328 | MENZIES 328 | ROCKE 328 | EDULUNA 328 | VEROD 328 |
| NEWMARK 207 | DAYHART 327 | DAYHART 327 | DAYHART 327 | DAYHART 327 | DAYHART 327 |
| MOUNT WALTER 206 | DAYHART 326 | DAYHART 326 | DAYHART 326 | DAYHART 326 | DAYHART 326 |



DEPARTMENT OF MINERALS AND ENERGY
HON. GEORGE CASH J.P., M.L.C.
MINISTER FOR MINES
K. R. PERRY, DIRECTOR GENERAL



PRODUCT OF
WORLD GEOSCIENCE CORPORATION LTD



PETER GILL
DIRECTOR, GEOLOGICAL SURVEY
OF WESTERN AUSTRALIA

SCALE 1:100 000
TRANVERSE MERCATOR PROJECTION
Grid lines indicate 10 000 metre interval of the Australian Map Grid Zone 51

Geophysical Project Manager, Greg Steenson
Aeromagnetic compilation by J. H. Watt
Aeromagnetic data capture by Aerodata Holdings Ltd (World Geoscience Corporation Ltd)
Edited by C. Strong and G. Loan
Cartography by T. Lennane

Published by the Geological Survey of Western Australia, with permission of the copyright holder.
Copies available from the Mining Information Centre, Department of Minerals and Energy,
100 Plain Street, East Perth, WA, 6004. Phone (09) 222 3459; Fax (09) 222 3444
Digital data available from the World Geoscience Corporation Ltd,
65 Brookway Road, Floreat, WA, 6104. Phone (09) 273 6400; Fax (09) 273 6466

Persons who purchase this information in any format may only reproduce it for their own use
and not for publication or resale in any form, except with the written permission of the
World Geoscience Corporation Ltd

TOTAL MAGNETIC INTENSITY CONTOUR
MULGABBIE
SHEET 3337 FIRST EDITION 1996

MENZIES

GEOLOGICAL SURVEY OF WESTERN AUSTRALIA

1:100 000 TOTAL MAGNETIC INTENSITY CONTOUR

SHEET 3138

LEGEND

Total magnetic intensity contour, 25 nanotesla interval 59 000
Magnetic high H
Magnetic low L

SURVEY SPECIFICATIONS

Date flown: 1988-1990
Flown by: Aerodata Holdings Ltd (World Geoscience Corporation Ltd)
Line spacing: 200 m
Line direction: (080-270) degrees
Terrain clearance: 60 m above ground level
Sampling interval: 6 m (0.1 second)
Primary processing: Aerodata Holdings Ltd (World Geoscience Corporation Ltd)
IGRF: removed
Geoidic datum: ADG66
Grid cell size: 10 m



SHEET INDEX

| | | | | | | | | | | | |
|------------|-----|-----|------------|-----|-----|------------|-----|-----|------------|-----|-----|
| MOUNT MICA | 200 | 200 | MOUNT MICA | 200 | 200 | MOUNT MICA | 200 | 200 | MOUNT MICA | 200 | 200 |
| MOUNT MICA | 200 | 200 | MOUNT MICA | 200 | 200 | MOUNT MICA | 200 | 200 | MOUNT MICA | 200 | 200 |
| MOUNT MICA | 200 | 200 | MOUNT MICA | 200 | 200 | MOUNT MICA | 200 | 200 | MOUNT MICA | 200 | 200 |
| MOUNT MICA | 200 | 200 | MOUNT MICA | 200 | 200 | MOUNT MICA | 200 | 200 | MOUNT MICA | 200 | 200 |
| MOUNT MICA | 200 | 200 | MOUNT MICA | 200 | 200 | MOUNT MICA | 200 | 200 | MOUNT MICA | 200 | 200 |
| MOUNT MICA | 200 | 200 | MOUNT MICA | 200 | 200 | MOUNT MICA | 200 | 200 | MOUNT MICA | 200 | 200 |
| MOUNT MICA | 200 | 200 | MOUNT MICA | 200 | 200 | MOUNT MICA | 200 | 200 | MOUNT MICA | 200 | 200 |
| MOUNT MICA | 200 | 200 | MOUNT MICA | 200 | 200 | MOUNT MICA | 200 | 200 | MOUNT MICA | 200 | 200 |
| MOUNT MICA | 200 | 200 | MOUNT MICA | 200 | 200 | MOUNT MICA | 200 | 200 | MOUNT MICA | 200 | 200 |
| MOUNT MICA | 200 | 200 | MOUNT MICA | 200 | 200 | MOUNT MICA | 200 | 200 | MOUNT MICA | 200 | 200 |



DEPARTMENT OF MINERALS AND ENERGY
HON GEORGE OSKUP MLC
MINISTER FOR MINES
K. H. PERRY, DIRECTOR GENERAL



PRODUCT OF
WORLD GEOSCIENCE CORPORATION LTD



PETER GILL
DIRECTOR, GEOLOGICAL SURVEY
OF WESTERN AUSTRALIA

SCALE 1:100 000
1000 0 1 2 3 4 5 6 7 8 9 10
Metres
TRANSVERSE MERCATOR PROJECTION
Grid lines indicate 10 000 metre interval of the Australian Map Grid Zone 51
Kilometres

Geophysical Project Manager: Greg Steenson
Aeromagnetic compilation by: J. H. Watt
Aeromagnetic data capture by: Aerodata Holdings Ltd (World Geoscience Corporation Ltd)
Edited by: C. Strong and G. Loan
Cartography by: T. Leneane

Published by the Geological Survey of Western Australia, with permission of the copyright holder.
Copies available from the Mining Information Centre, Department of Minerals and Energy,
100 Plain Street, East Perth, WA, 6004. Phone (09) 222 3450. Fax (09) 222 3444.
Digital data available from the World Geoscience Corporation Ltd,
65 Brookway Road, Forest, WA, 6014. Phone (09) 273 6400. Fax (09) 273 6466.

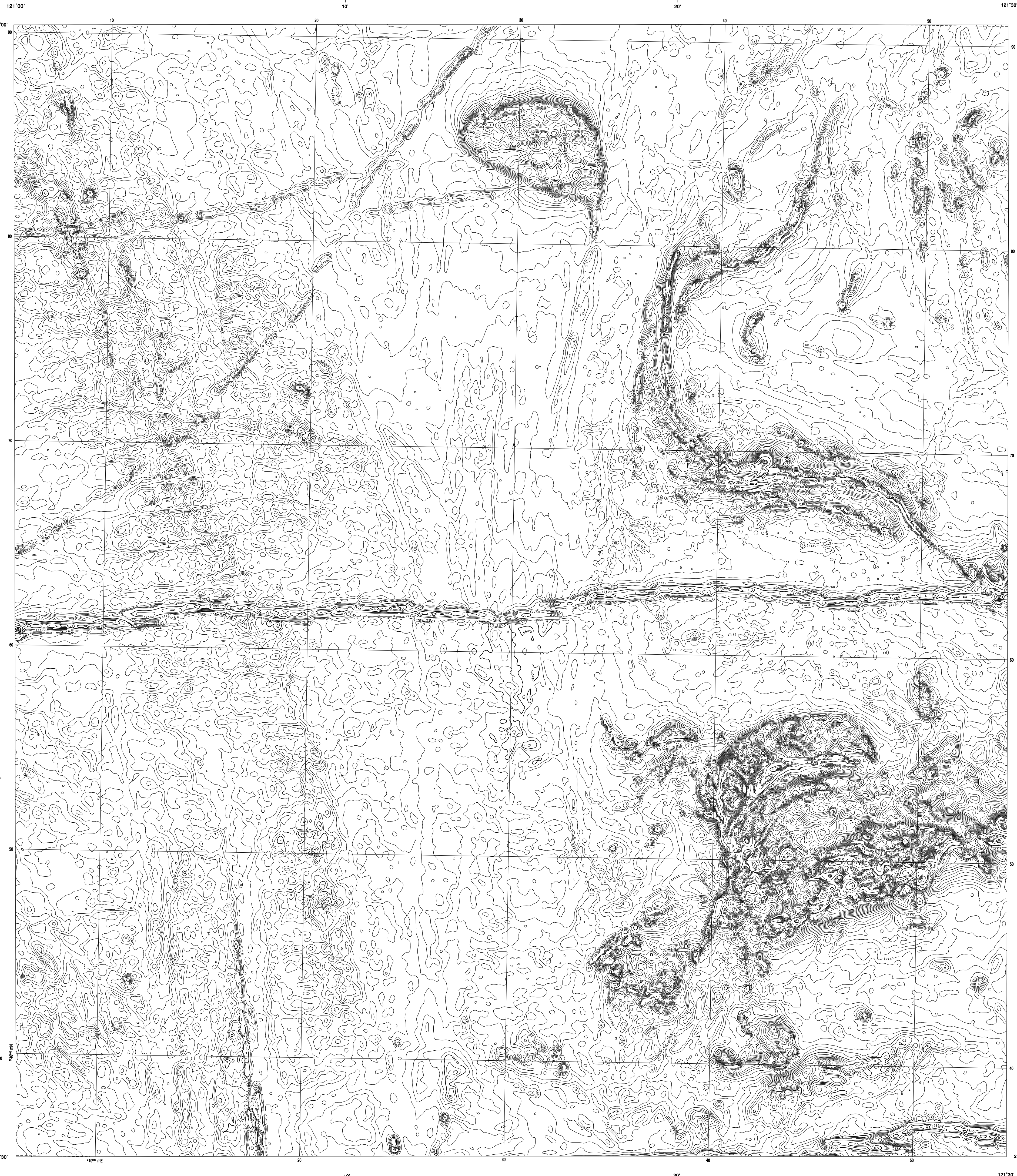
Persons who purchase this information in any format may only reproduce it for their own use
and not for publication or resale in any form, except with the written permission of the
World Geoscience Corporation Ltd

TOTAL MAGNETIC INTENSITY CONTOUR

MENZIES

SHEET 3138 FIRST EDITION 1996

© World Geoscience Corporation Ltd



LEGEND

Total magnetic intensity contour, 25 nanotesla interval 50 000

Magnetic high H

Magnetic low L

SURVEY SPECIFICATIONS

Date flown: 1988-1990
Flown by: Aerodata Holdings Ltd (World Geoscience Corporation Ltd)
Line spacing: 200 m
Line direction: 090/270 degrees
Terrain clearance: 60 m above ground level
Sampling interval: 6 m (0.1 second)

Primary processing: Aerodata Holdings Ltd (World Geoscience Corporation Ltd)
IGRF: removed
Geoid datum: AQ2365
Grid cell size: 70 m



SHEET INDEX

| | | | | | |
|---------------------|----------------|----------------|---------------|-------------------|--------------------|
| MOUNT MACH 308 | IRLAND 308 | MELITA 3139 | YERLA 328 | LINE CREEK 338 | MOUNT CELIA 348 |
| MULLINE 308 | WENNES 308 | WENNES 308 | WENNES 308 | WENNES 308 | WENNES 308 |
| NEARWING 308 | DAYHART 308 | EMERSON 308 | GRADY 308 | MALDEN 308 | PLAIN 308 |
| MOUNT WATERS 308 | WENNES 308 | WENNES 308 | WENNES 308 | WENNES 308 | WENNES 308 |



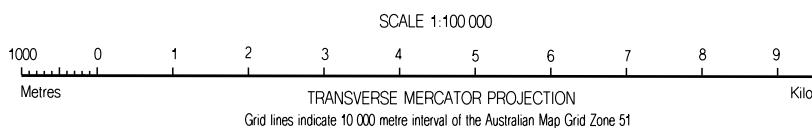
DEPARTMENT OF MINERALS AND ENERGY
HON. GEORGE GRIFFIN, M.P., M.L.C.
MINISTER FOR MINES
K. R. PERRY, DIRECTOR GENERAL



PRODUCT OF
WORLD GEOSCIENCE CORPORATION LTD



PETER DILL
DIRECTOR, GEOLOGICAL SURVEY
OF WESTERN AUSTRALIA



Geophysical Project Manager: Greg Stevenson

Aeromagnetic compilation by J. H. Watt

Aeromagnetic data capture by Aerodata Holdings Ltd (World Geoscience Corporation Ltd)

Edited by C. Strong and G. Loan

Cartography by T. Leman

Published by the Geological Survey of Western Australia, with permission of the copyright holder.
Copies available from the Mining Information Centre, Department of Minerals and Energy,
100 Plain Street, East Perth, WA, 6004. Phone (09) 222 3459, Fax (09) 222 3444.

Digital data available from the World Geoscience Corporation Ltd,
65 Brookway Road, Forest, WA, 6014. Phone (09) 273 6400, Fax (09) 273 6466.

Persons who purchase this information in any format may only reproduce it for their own use
and not for publication or resale in any form, except with the written permission of the
World Geoscience Corporation Ltd

TOTAL MAGNETIC INTENSITY CONTOUR

MELITA

SHEET 3139

FIRST EDITION 1996

© World Geoscience Corporation Ltd



LEGEND

Total magnetic intensity contour, 25 nanotesla interval 59000
Magnetic high H
Magnetic low L

SURVEY SPECIFICATIONS

Date flown: 1989 1990
Flown by: Aerodata Holdings Ltd (World Geoscience Corporation Ltd)
Line spacing: 200 m
Line direction: 090-270 degrees
Terrain clearance: 60 m above ground level
Sampling interval: 6 m (0.1 second)
Primary processing: Aerodata Holdings Ltd (World Geoscience Corporation Ltd)
IGF: removed
Geodetic datum: AGD66
Grid cell size: 70 m



SHEET INDEX

| | | | | | |
|--------------------|---------------|---------------|---------------|------------------|--------------------|
| MOUNT MERRI 308 | PALEO 308 | MELIA 308 | VERBA 308 | LINE ONEY 308 | MOUNT CELIA 308 |
| MALINE 308 | MONIES 308 | EDJUNA 308 | EDJUNA 308 | EDJUNA 308 | EDJUNA 308 |
| NEWING 307 | NEWING 307 | NEWING 307 | NEWING 307 | NEWING 307 | NEWING 307 |
| MOUNT MERRI 308 | PALEO 308 | MELIA 308 | VERBA 308 | LINE ONEY 308 | MOUNT CELIA 308 |



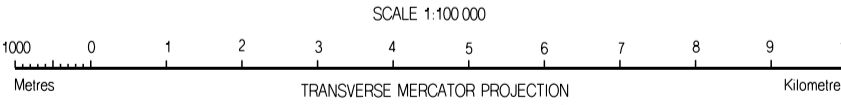
DEPARTMENT OF MINERALS AND ENERGY
HOW GEORGE CARP, J.P., M.L.C.
MINISTER FOR MINES
K. R. PERRY, DIRECTOR GENERAL



PRODUCT OF
WORLD GEOSCIENCE CORPORATION LTD



PETER GILL
DIRECTOR, GEOLOGICAL SURVEY
OF WESTERN AUSTRALIA



Geophysical Project Manager, Greg Steenson
Aeromagnetic compilation by J. H. Watt
Aeromagnetic data capture by Aerodata Holdings Ltd (World Geoscience Corporation Ltd)
Edited by C. Strong and G. Loan
Cartography by T. Leman

Published by the Geological Survey of Western Australia, with permission of the copyright holder.
Copies available from the Mining Information Centre, Department of Minerals and Energy,
100 Plain Street, East Perth, WA, 6004. Phone (09) 222 3459, Fax (09) 222 3444
Digital data available from the World Geoscience Corporation Ltd,
65 Broadway Road, Floreat, WA, 6014. Phone (09) 273 6400, Fax (09) 273 6466

Persons who purchase this information in any format may only reproduce it for their own use
and not for publication or resale in any form, except with the written permission of the
World Geoscience Corporation Ltd



LEGEND

Total magnetic intensity contour, 25 nanotesla interval 59000
Magnetic high H
Magnetic low L

SURVEY SPECIFICATIONS

Date flown: 1995-1996
Flown by: Aerodata Holdings Ltd (World Geoscience Corporation Ltd)
Line spacing: 200 m
Line direction: 090-270 degrees
Terrain clearance: 60 m above ground level
Sampling interval: 6 m (0.1 second)

Primary processing: Aerodata Holdings Ltd (World Geoscience Corporation Ltd)
IGRF: removed
Geodetic datum: AGD66
Grid cell size: 70 m



SHEET INDEX

| | | | | | |
|--------------------|---------------|--------------|--------------|-------------------|-------------------|
| MOUNT MICA 308 | WILLOW 308 | MELBA 308 | VERBA 308 | LANE CREEK 308 | MOUNT GLEN 308 |
| MALINE 308 | WILLOW 308 | MELBA 308 | VERBA 308 | LANE CREEK 308 | MOUNT GLEN 308 |
| NEARWING 307 | WILLOW 308 | MELBA 308 | VERBA 308 | LANE CREEK 308 | MOUNT GLEN 308 |
| MOUNT WATTS 308 | WILLOW 308 | MELBA 308 | VERBA 308 | LANE CREEK 308 | MOUNT GLEN 308 |



DEPARTMENT OF MINERALS AND ENERGY
HOW GEORGE CASH, J.P., M.L.C.
MINISTER FOR MINES
K. R. PERRY, DIRECTOR GENERAL



PRODUCT OF
WORLD GEOSCIENCE CORPORATION LTD



PIERO GILI
DIRECTOR, GEOLOGICAL SURVEY
OF WESTERN AUSTRALIA

SCALE 1:100 000
1000 0 1 2 3 4 5 6 7 8 9 10
Metres TRANSVERSE MERCATOR PROJECTION Kilometres
Grid lines indicate 10 000 metre interval of the Australian Map Grid Zone 51

Geophysical Project Manager, Greg Steenson
Aeromagnetic compilation by J. H. Watt
Aeromagnetic data capture by Aerodata Holdings Ltd (World Geoscience Corporation Ltd)
Edited by C. Strong and G. Loan
Cartography by T. Lennan

Published by the Geological Survey of Western Australia, with permission of the copyright holder.
Copies available from the Mining Information Centre, Department of Minerals and Energy,
100 Plain Street, East Perth, WA, 6004. Phone (08) 222 3459; Fax (08) 222 3444.
Digital data available from the World Geoscience Corporation Ltd,
65 Brookway Road, Floreat, WA, 6104. Phone (08) 273 6400; Fax (08) 273 6466.

Persons who purchase this information in any format may only reproduce it for their own use
and not for publication or resale in any form, except with the written permission of the
World Geoscience Corporation Ltd

TOTAL FIELD MAGNETIC CONTOUR
GINDALBIE
SHEET 3237 FIRST EDITION 1996

