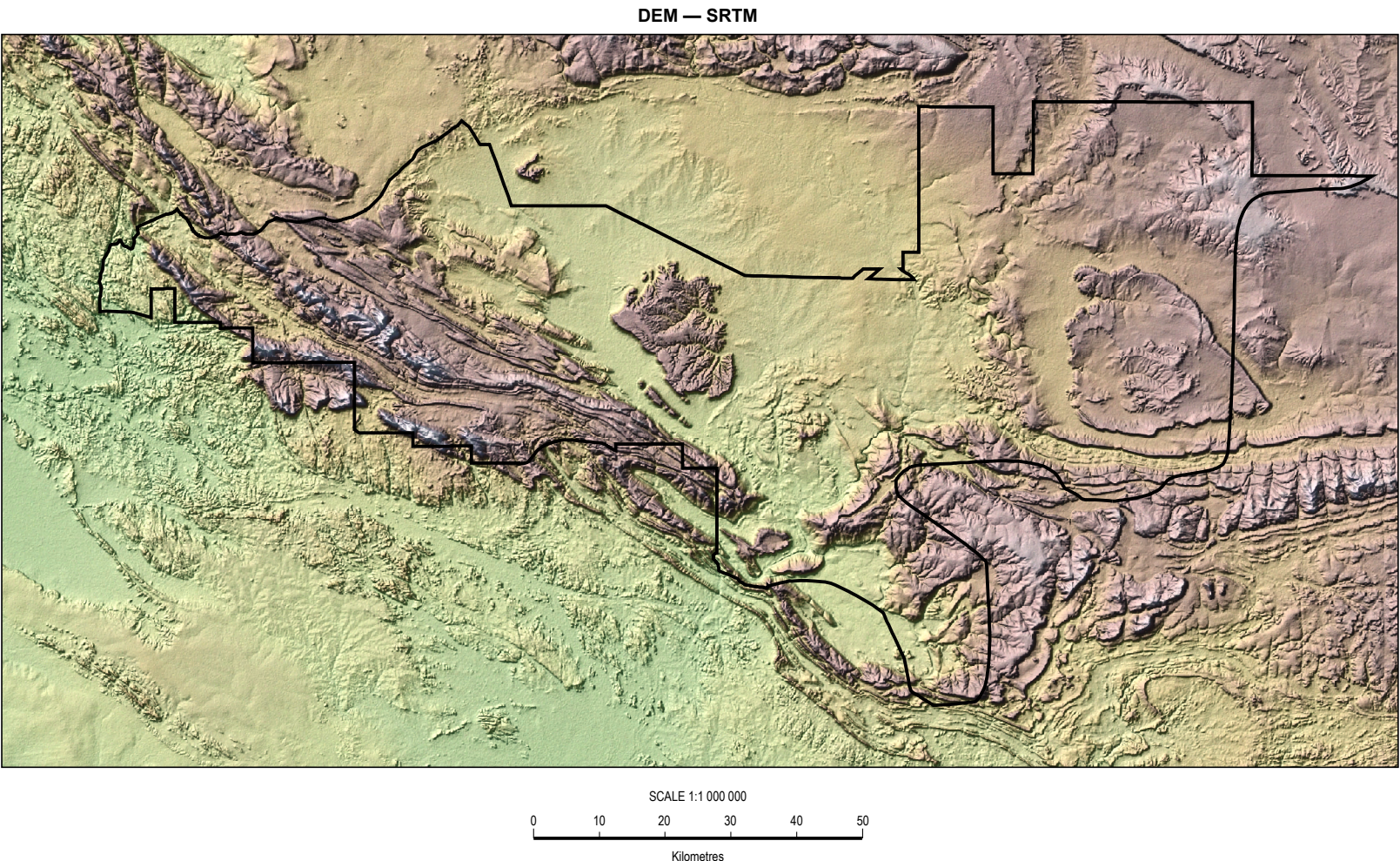
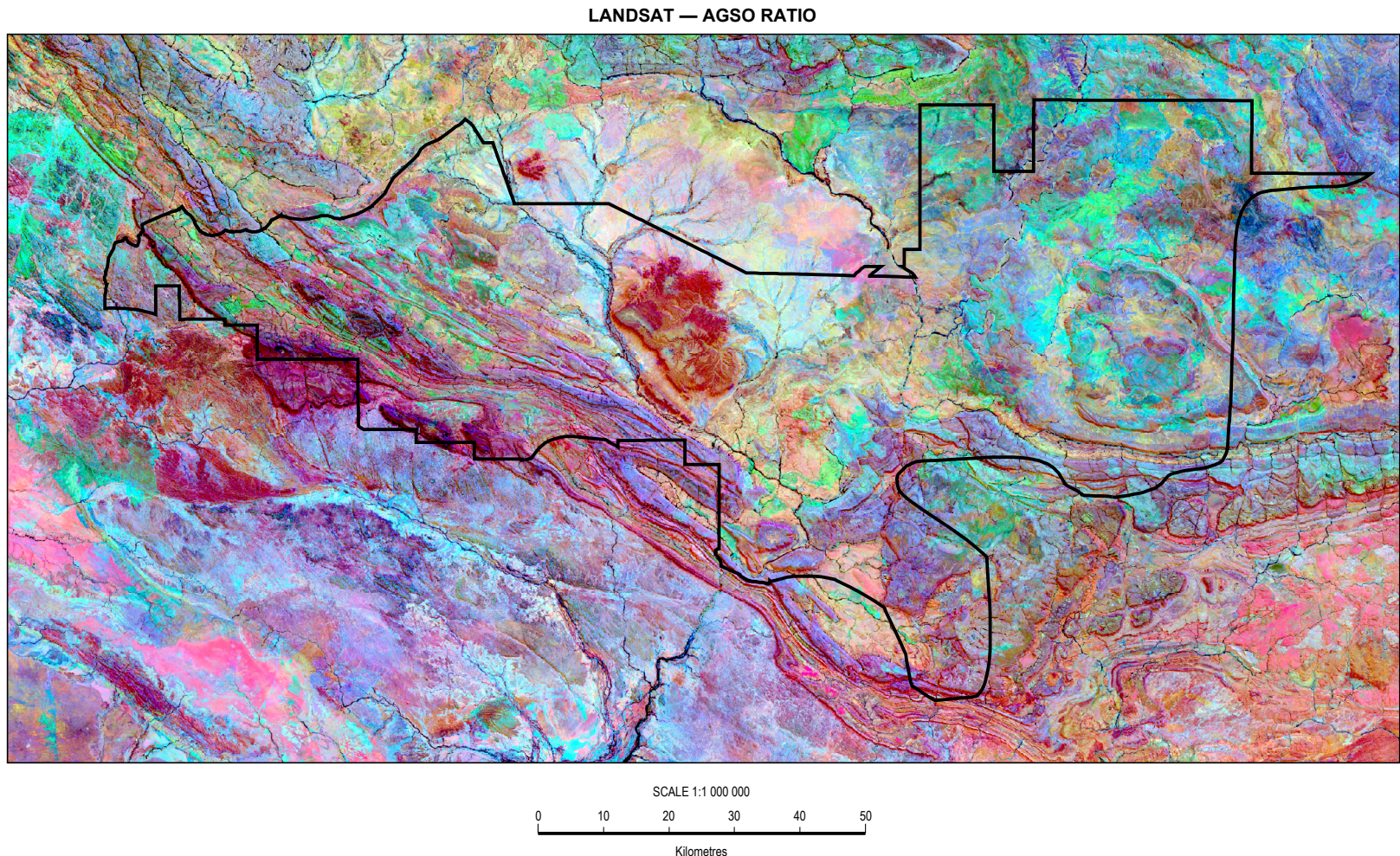
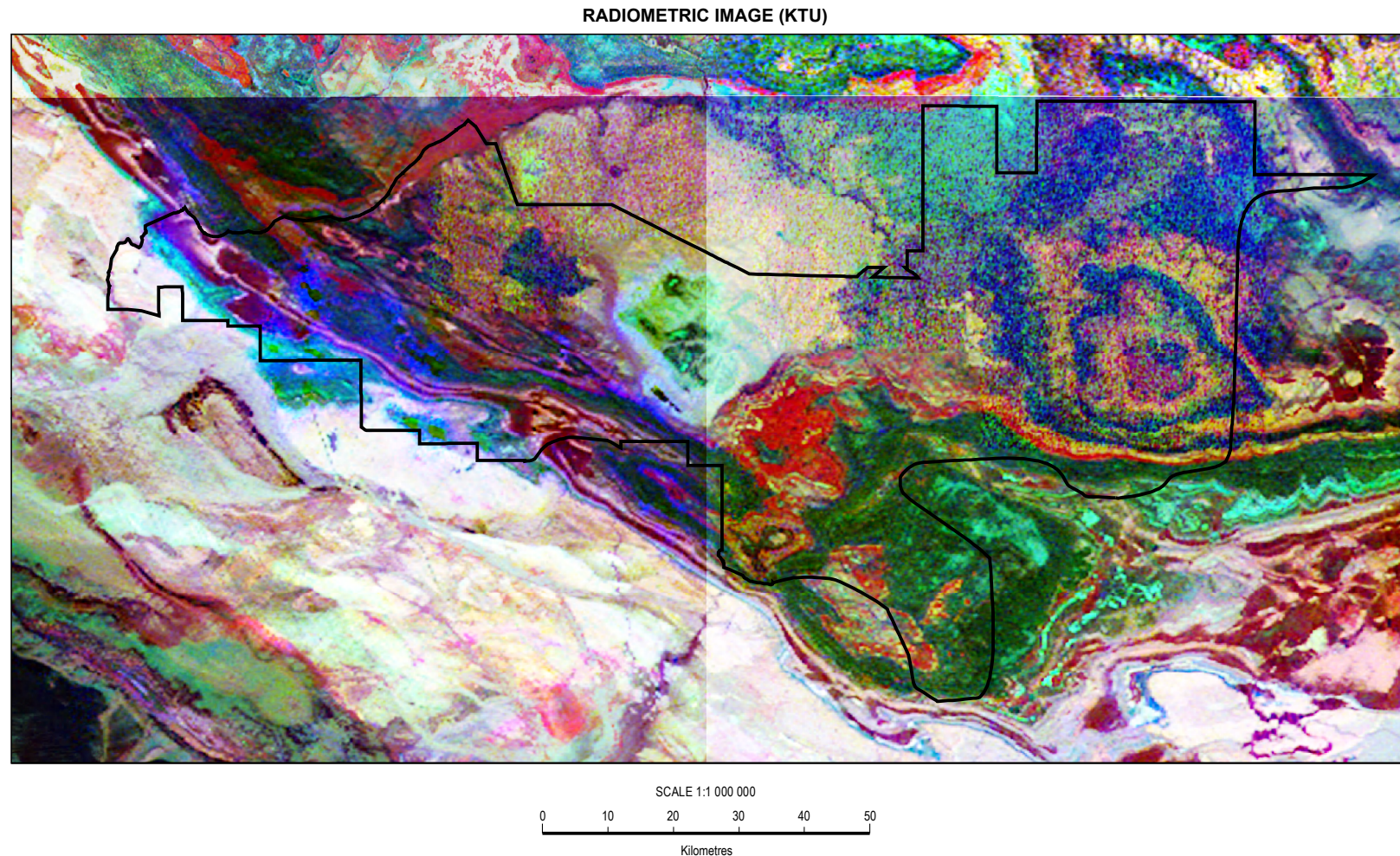
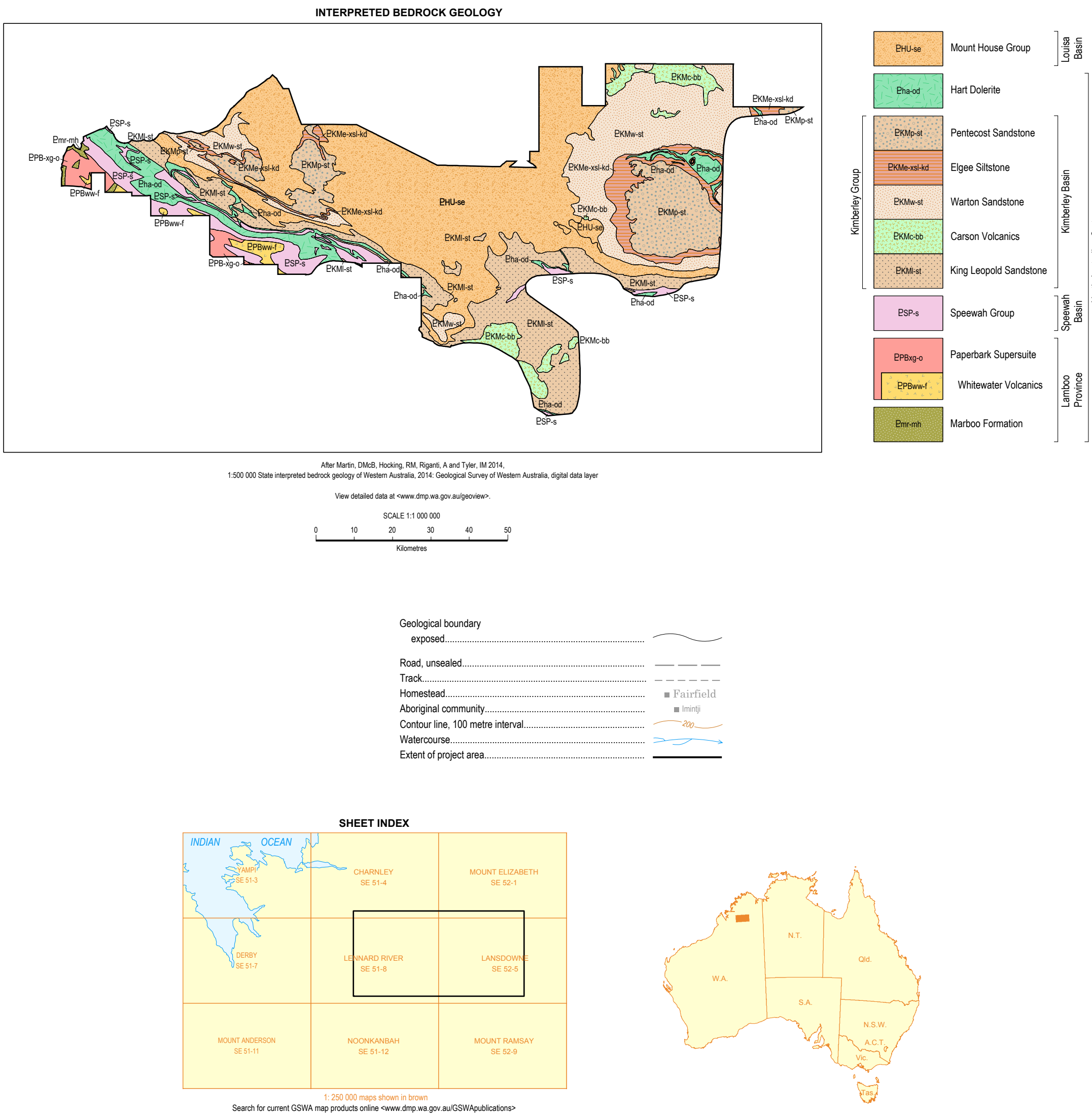


DEPOSITIONAL REGIME	EXPOSED REGIME
Colluvial units	Colluvial units
Q_{2n} Quartzofeldspathic sand, silt, and gravel in colluvial deposits derived from granitic rocks	Z_{1s} Ferruginous sandstone
Q_{2p} Quartzofeldspathic sand, silt, and gravel in colluvial deposits derived from sedimentary rocks	Z_{2p} Quartzofeldspathic plutonic rocks; granophyre
Q_{2s} Quartzofeldspathic sand, silt, and gravel in colluvial deposits derived from felsic volcanic rocks	Z_{2s} Quartzofeldspathic plutonic rocks; granite
Q_{3c} Carbonate-rich colluvial deposits derived from biochemical sedimentary rocks; zoomite and limestone	Z_{3s} Quartzofeldspathic sedimentary rocks
Q_{3p} Ferruginous colluvial deposits and lateritic soils derived from dolerite	Z_{3p} Quartzofeldspathic volcanic rocks; dacite
Q_{3m} Ferruginous colluvial deposits, red-brown sand and silt, with pebbles; derived from basalt	Z_{3m} Carbonate-rich sedimentary rocks; dolomite and limestone
Q_{3r} Quartz-rich sand, silt and gravel in colluvial deposits derived from sedimentary rocks	Z_{4p} Mafic subvolcanic rocks; dolerite
Q_{3u} Micaceous colluvium derived from sedimentary rocks	Z_{5m} Mafic volcanic rocks; basalt
Alluvial units	Z_{6p} Quartz-rich sandstone
A Clay, silt, sand, and gravel in channels and on floodplains	Z_{7m} Micaceous metamorphosed siliclastic rocks
A_{2s} Black soils (gipgit); grey to black smectitic clays on alluvial plains	Z_{8m} Micaceous mudstone, siltstone, and shale
RESIDUAL REGIME	
Residual or relict units	
R_{1s} Transported ferruginous duricrust; iron-cemented sand, gravel, cobbles, and boulders; derived from siliclastic sedimentary rocks	
R_{1p} Relict alluvial deposits on mesas; derived from pebble conglomerate and quartz sandstone	



DATA SOURCES		
Theme	Data Currency	Organization ¹
Geology	2015	Geological Survey of Western Australia, Department of Mines and Petroleum
Topographic nomenclature	2015	Landgate
Topography	2015	Landgate
Contours	2006	Geological Survey of Western Australia, Department of Mines and Petroleum (derived from NASA SRTM 90 in Digital Elevation Model)
¹ NSW State Government unless otherwise indicated		
Compiled by M de Souza Kovacs 2015 Regolith-landform geology by M de Souza Kovacs 2015 Cartography by GJ Schindler and S Mulligan Edited by JH White and S Greenberg Published by Geological Survey of Western Australia This map is published in digital format (PDF) and is available online at: www.dmp.wa.gov.au/GSWApublications Copies are available from: Information Centre Department of Mines and Petroleum 100 Plain Street East Perth, Western Australia 6004 Phone: +61 8 9222 3429 Website: www.dmp.wa.gov.au/gswa Fax: +61 8 9222 3444 Email: geologicalsurvey@dmp.wa.gov.au The recommended reference for this map is: de Souza Kovacs M. Interpreted regolith-landform geology of the Bunuba and Yuriyangem-Taam areas, South Kimberley in: Regolith-landform geology of the Bunuba and Yuriyangem-Taam areas, South Kimberley, by M de Souza Kovacs, Geological Survey of Western Australia, Record 2015/15, Plate 1		
This product was produced using information from various sources. The Department of Mines and Petroleum (DMP) and the State cannot guarantee the accuracy, currency or completeness of the information. DMP and the State accept no responsibility and disclaim all liability for any loss, damage or costs incurred as a result of any use of or reliance whether wholly or in part upon the information provided in this publication or incorporated into it by reference.		

Government of Western Australia
Department of Mines and Petroleum

Geological Survey of Western Australia
BIO ROBERTSON
EXECUTIVE DIRECTOR

SCALE 1:250 000

UNIVERSAL TRANSVERSE MERCATOR PROJECTION
HORIZONTAL DATUM: GEODESIC DATUM OF AUSTRALIA 1984
VERTICAL DATUM: AUSTRALIAN HEIGHT DATUM
Grid lines indicate 10 000 metre interval of the Map Grid Australia Zone 51 and Zone 52
The Map Grid Australia (MGA) is based on the Geocentric Datum of Australia 1984 (GDA84)
GDA84 coordinates are comparable with one metre of the datum GDA84 coordinate

GEOLOGICAL SURVEY OF WESTERN AUSTRALIA
RECORD 2015/15 PLATE 1

INTERPRETED REGOLITH-LANDFORM GEOLOGY OF THE BUNUBA AND YURIYANGEM-TAAM AREAS, SOUTH KIMBERLEY

March 2016
© Western Australia 2016