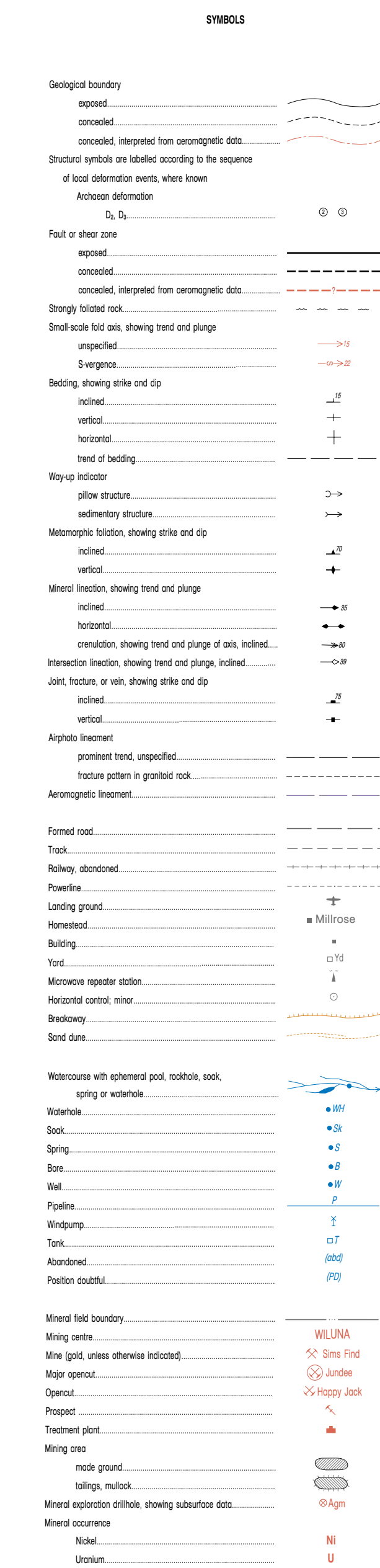
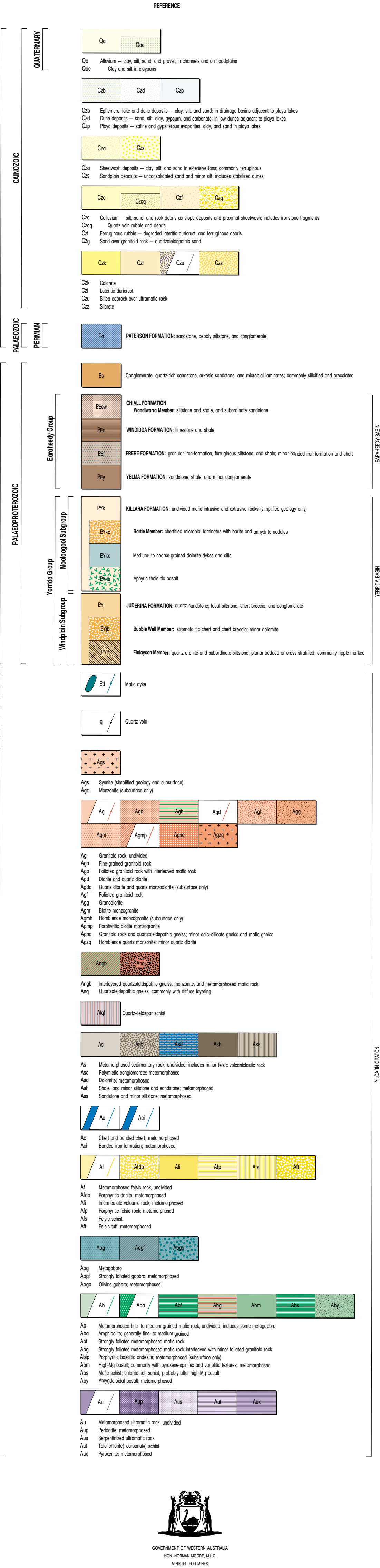
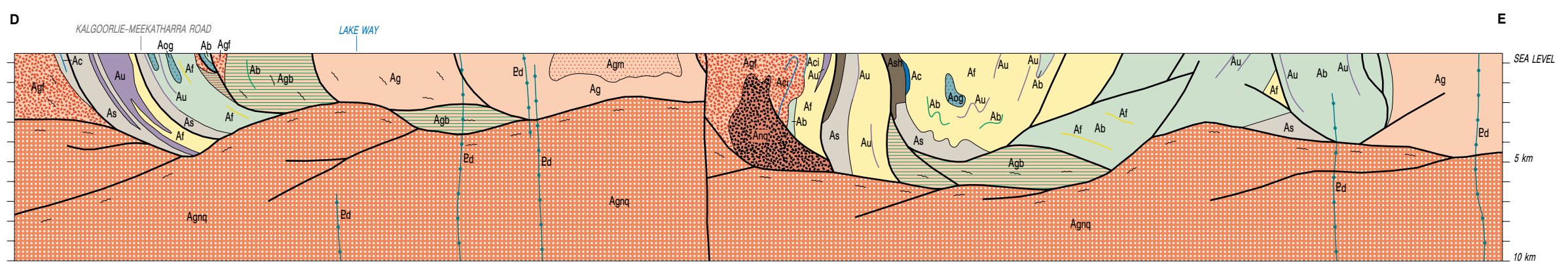
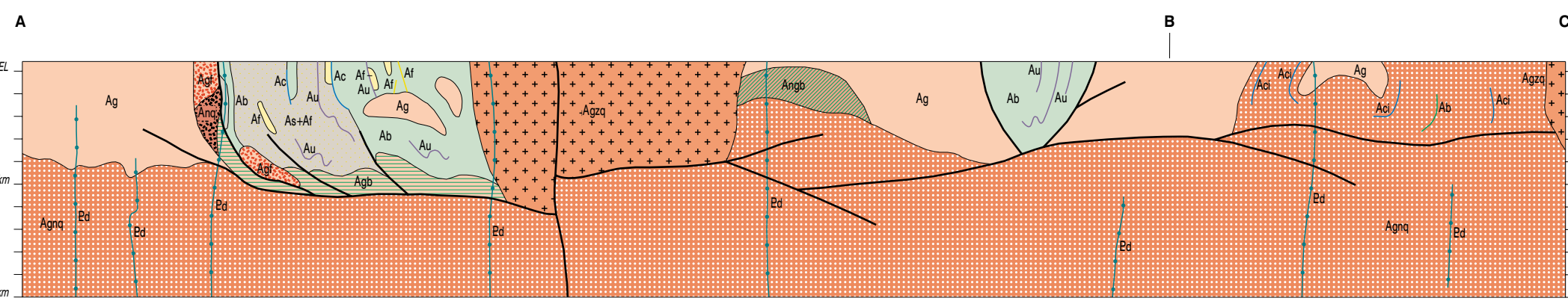
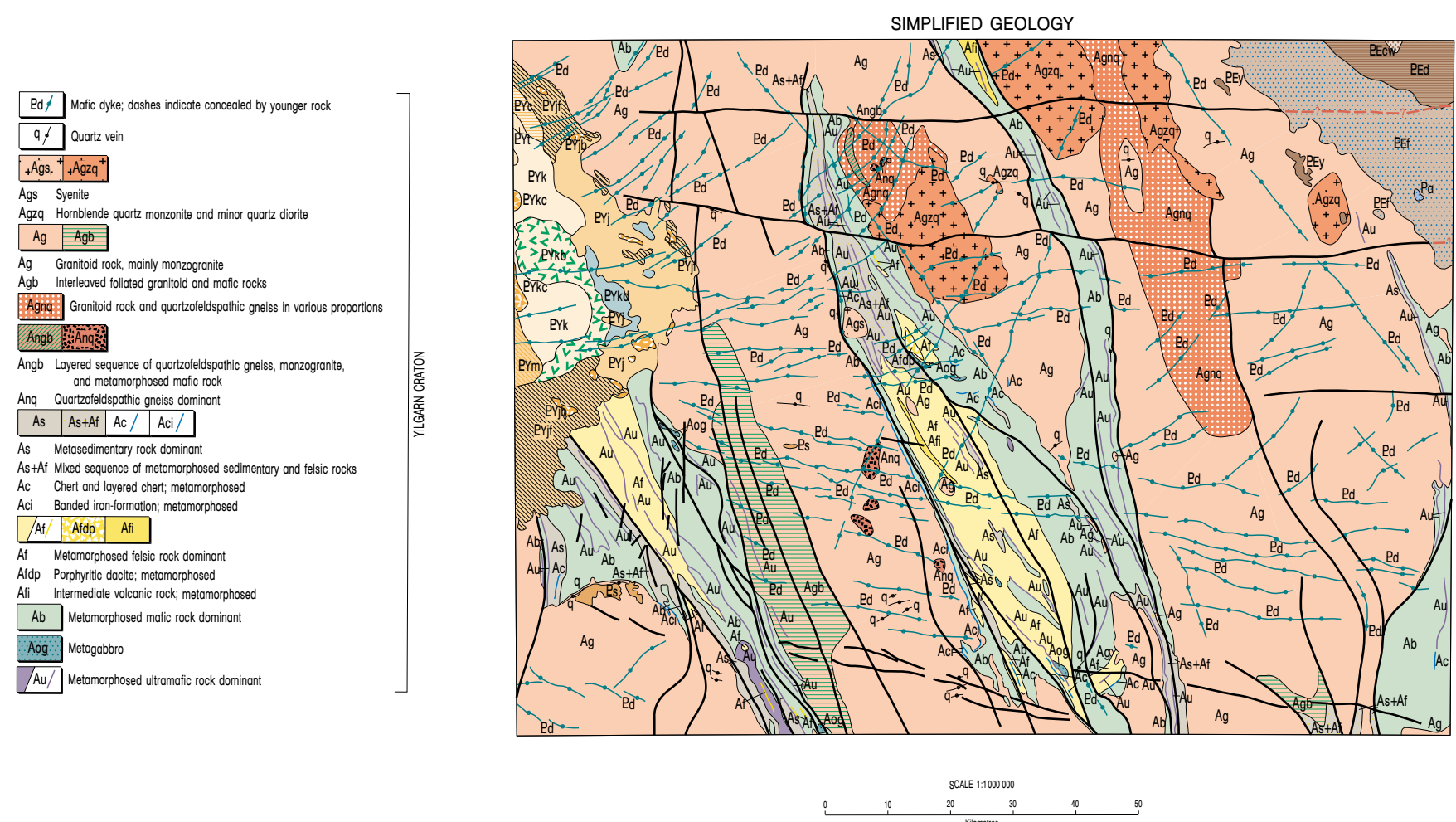
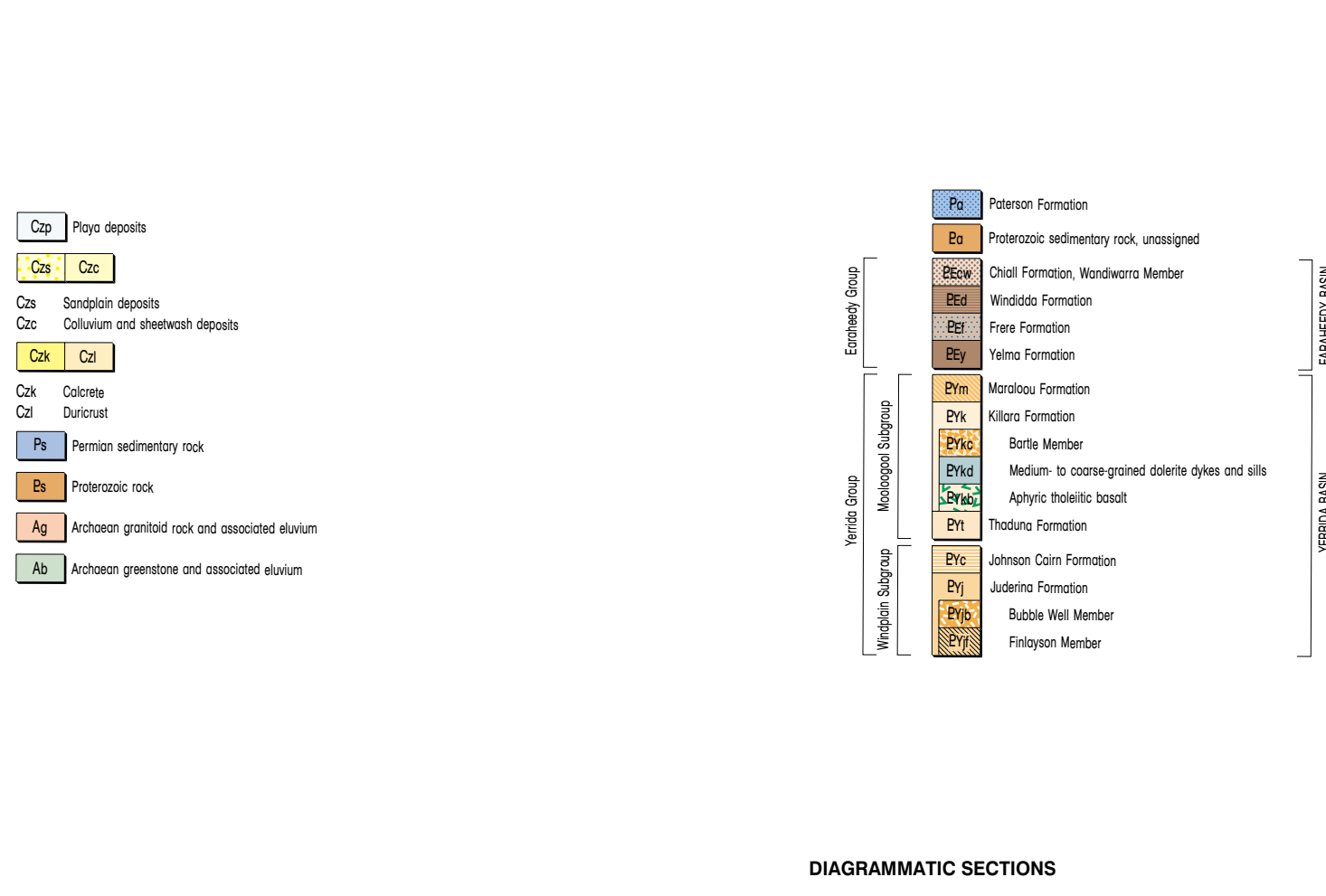
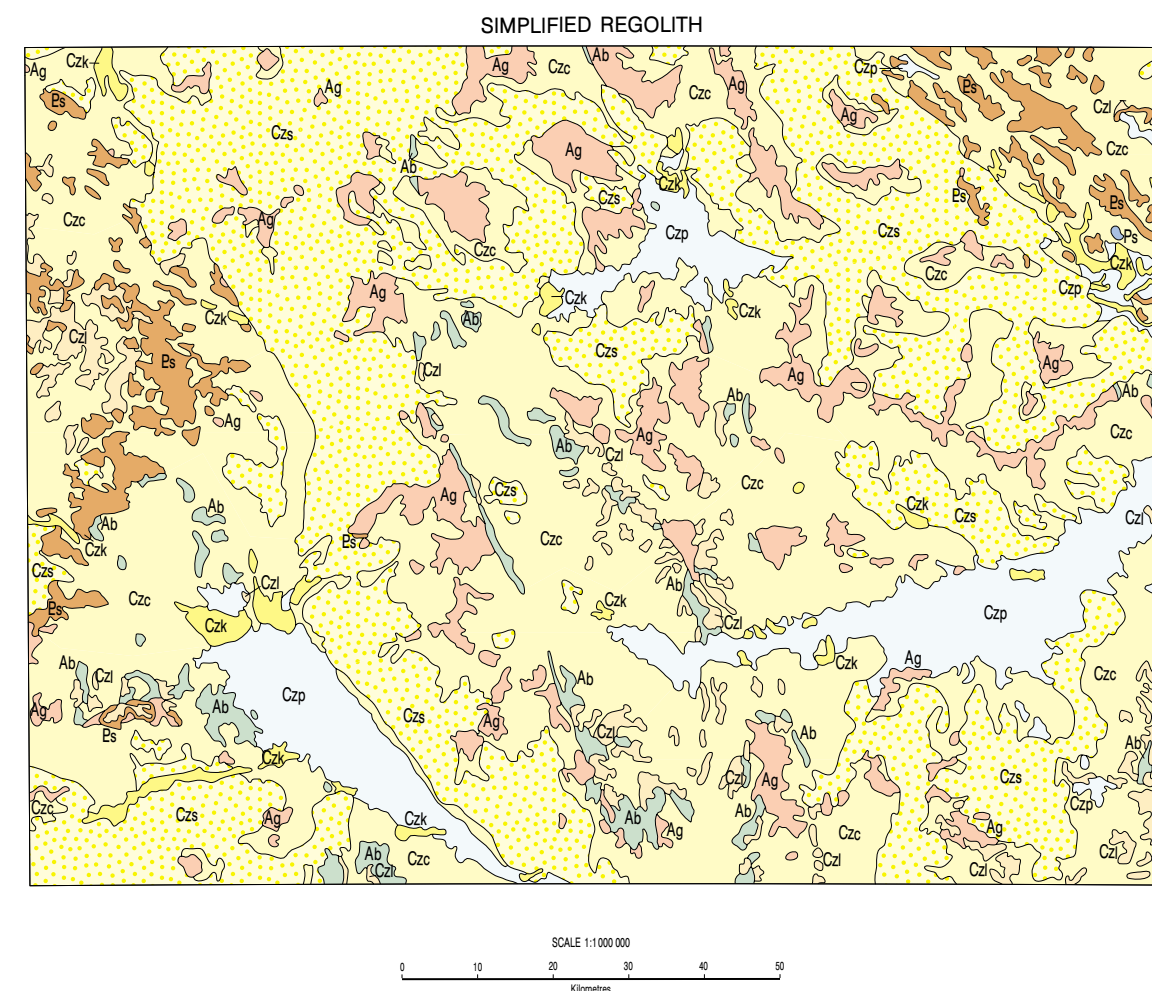
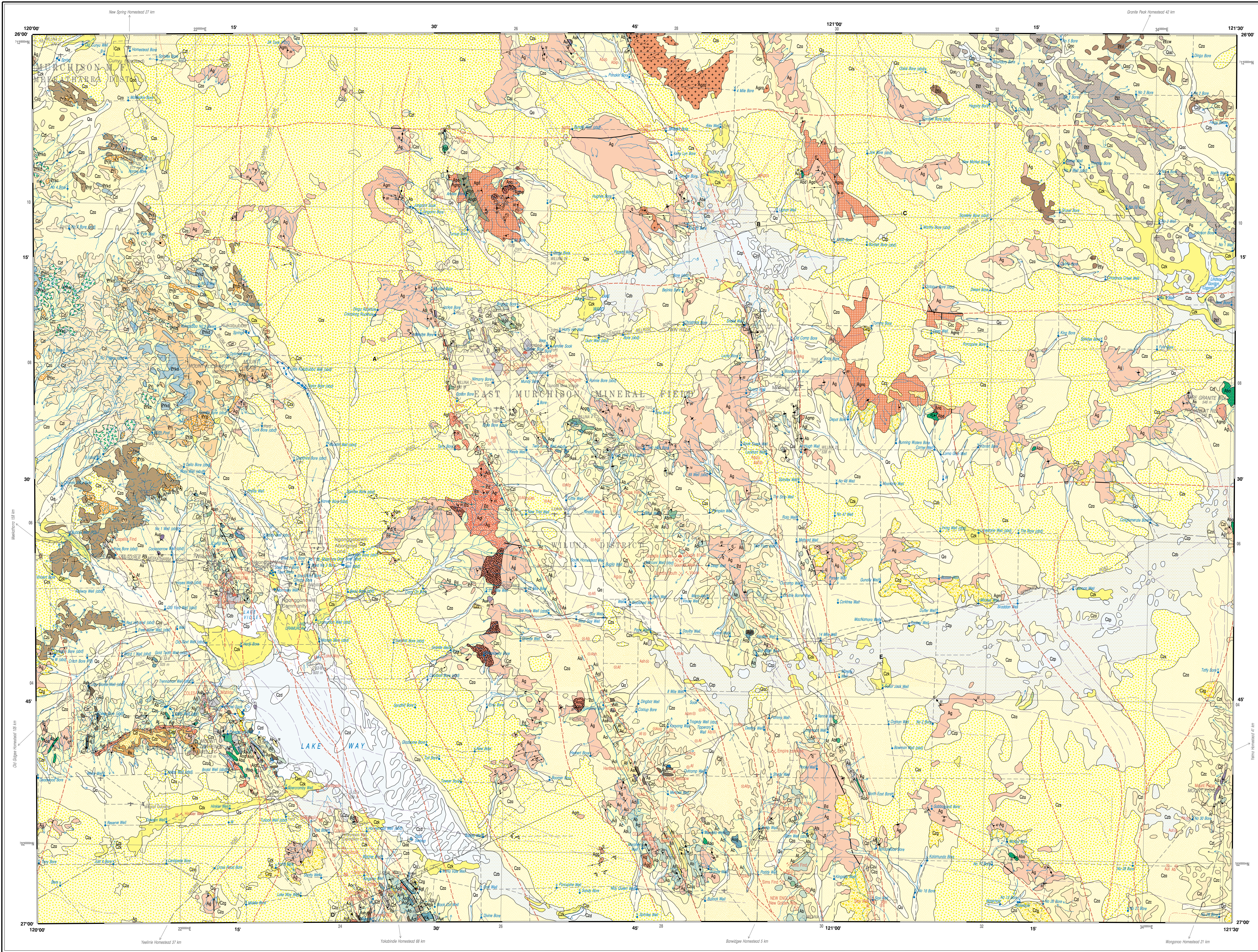


WILUNA

SHEET SG 51-9



SHEET INDEX								
JANET	REED BAKER	WILLIAM	TERESA	WILLIAM	ROBERT	JOHN	SHARLENE	WILLIAM
100	101	102	103	104	105	106	107	108
109	110	111	112	113	114	115	116	117
118	119	120	121	122	123	124	125	126
127	128	129	130	131	132	133	134	135
136	137	138	139	140	141	142	143	144
145	146	147	148	149	150	151	152	153
154	155	156	157	158	159	160	161	162
163	164	165	166	167	168	169	170	171
172	173	174	175	176	177	178	179	180
181	182	183	184	185	186	187	188	189
190	191	192	193	194	195	196	197	198
199	200	201	202	203	204	205	206	207
208	209	210	211	212	213	214	215	216
217	218	219	220	221	222	223	224	225
226	227	228	229	230	231	232	233	234
235	236	237	238	239	240	241	242	243
244	245	246	247	248	249	250	251	252
253	254	255	256	257	258	259	260	261
262	263	264	265	266	267	268	269	270
271	272	273	274	275	276	277	278	279
280	281	282	283	284	285	286	287	288
289	290	291	292	293	294	295	296	297
298	299	300	301	302	303	304	305	306
307	308	309	310	311	312	313	314	315
316	317	318	319	320	321	322	323	324
325	326	327	328	329	330	331	332	333
334	335	336	337	338	339	340	341	342
343	344	345	346	347	348	349	350	351
352	353	354	355	356	357	358	359	360
361	362	363	364	365	366	367	368	369
370	371	372	373	374	375	376	377	378
379	380	381	382	383	384	385	386	387
388	389	390	391	392	393	394	395	396
397	398	399	400	401	402	403	404	405
406	407	408	409	410	411	412	413	414
415	416	417	418	419	420	421	422	423
424	425	426	427	428	429	430	431	432
433	434	435	436	437	438	439	440	441
442	443	444	445	446	447	448	449	450
451	452	453	454	455	456	457	458	459
460	461	462	463	464	465	466	467	468
469	470	471	472	473	474	475	476	477
478	479	480	481	482	483	484	485	486
487	488	489	490	491	492	493	494	495
496	497	498	499	500	501	502	503	504
505	506	507	508					

1/100000 rows shown in black

1/1000000 rows shown in cyan

1/10000000 rows shown in magenta

1/100000000 rows shown in yellow

1/1000000000 rows shown in green

1/10000000000 rows shown in blue

1/100000000000 rows shown in red

1/1000000000000 rows shown in purple

1/10000000000000 rows shown in brown

1/100000000000000 rows shown in pink

1/1000000000000000 rows shown in grey

1/10000000000000000 rows shown in light blue

1/100000000000000000 rows shown in light green

1/1000000000000000000 rows shown in light yellow

1/10000000000000000000 rows shown in light pink

1/100000000000000000000 rows shown in light grey

1/1000000000000000000000 rows shown in light blue

1/10000000000000000000000 rows shown in light green

1/100000000000000000000000 rows shown in light yellow

1/1000000000000000000000000 rows shown in light pink

1/10000000000000000000000000 rows shown in light grey

1/100000000000000000000000000 rows shown in light blue

1/1000000000000000000000000000 rows shown in light green

1/10000000000000000000000000000 rows shown in light yellow

1/100000000000000000000000000000 rows shown in light pink

1/1000000000000000000000000000000 rows shown in light grey

1/10000000000000000000000000000000 rows shown in light blue

1/100000000000000000000000000000000 rows shown in light green

1/1000000000000000000000000000000000 rows shown in light yellow

1/10000000000000000000000000000000000 rows shown in light pink

1/100000000000000000000000000000000000 rows shown in light grey

1/1000000000000000000000000000000000000 rows shown in light blue

1/10000000000000000000000000000000000000 rows shown in light green

1/100000000000000000000000000000000000000 rows shown in light yellow

1/1000000000000000000000000000000000000000 rows shown in light pink

1/100 rows shown in light grey

1/1000 rows shown in light blue

1/100 rows shown in light green

1/1000 rows shown in light yellow

1/100 rows shown in light pink

1/1000 rows shown in light grey

1/100 rows shown in light blue

1/1000 rows shown in light green

1/100 rows shown in light yellow

1/1000 rows shown in light pink

1/100 rows shown in light grey

1/1000 rows shown in light blue

1/100 rows shown in light green

1/1000 rows shown in light yellow

1/100 rows shown in light pink

1/1000 rows shown in light grey

1/100 rows shown in light blue

1/1000 rows shown in light green

1/100 rows shown in light yellow

1/1000 rows shown in light pink

1/100 rows shown in light grey

1/1000 rows shown in light blue

1/100 rows shown in light green

1/1000 rows shown in light yellow

1/100 rows shown in light pink

1/1000 rows shown in light grey

1/100 rows shown in light blue

1/1000 rows shown in light green

1/100 rows shown in light yellow

1/1000 rows shown in light pink

1/100 rows shown in light grey

1/1000 rows shown in light blue

1/100 rows shown in light green

1/1000 rows shown in light yellow

1/100 rows shown in light pink

1/1000 rows shown in light grey

1/100 rows shown in light blue

1/1000 rows shown in light green

1/100 rows shown in light yellow

1/1000 rows shown in light pink

1/100 rows shown in light grey

1/1000 rows shown in light blue

1/100 rows shown in light green

1/1000 rows shown in light yellow

1/100 rows shown in light pink

1/1000 rows shown in light grey

1/100 rows shown in light blue

1/1000 rows shown in light green

1/100 rows shown in light yellow

1/1000 rows shown in light pink

1/100 rows shown in light grey

1/1000 rows shown in light blue

1/100 rows shown in light green

1/1000 rows shown in light yellow

1/100 rows shown in light pink

1/1000 rows shown in light grey

1/1000 rows shown in light blue

1/100 rows shown in light green

1/1000 rows shown in light yellow

1/100 rows shown in light pink

1/1000 rows shown in light grey

1/100 rows shown in light blue

1/1000 rows shown in light green

1/100 rows shown in light yellow

1/1000 rows shown in light pink

1/100 rows shown in light grey

1/1000 rows shown in light blue

1/100 rows shown in light green

1/1000 rows shown in light yellow

1/1000 rows shown in light pink

1/100 rows shown in light grey

1/1000 rows shown in light blue

1/100 rows shown in light green

1/1000 rows shown in light yellow

1/100 rows shown in light pink

1/1000 rows shown in light grey

1/100 rows shown in light blue

1/1000 rows shown in light green

1/100 rows shown in light yellow

1/1000 rows shown in light pink

1/100 rows shown in light grey

1/1000

Compiled by T. R. Farnell 1997
Geology after GSWA and AGSO maps (see sheet index)
Edited by N. Yelland and G. Loon
Cartography by D. Ledbrook and B. Williams
Topography from the Department of Land Administration Survey SG 51-9
with modifications from Geological field survey
Published by the Geological Survey of Western Australia, 100 Colinvale Drive
from the Information Centre, Department of Minerals and Energy, 1201 Stirling
East Perth, WA, 6004. Phone (08) 9222 3459. Fax (08) 9222 3444
This map is also available in digital form
Printed by the Service Print Centre, Western Australia
The recommended reference for this map is:
FARNELL, T. R., 1999. Wiluna, W.A. Sheet SG 51-9 (2nd edition):
Western Australia Geological Survey. 1:250,000 Geological Series