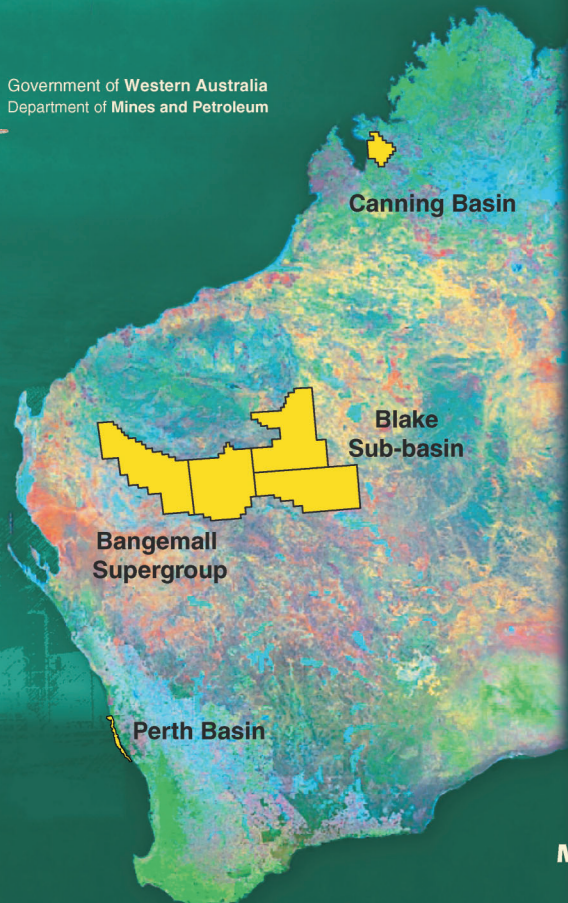




Government of Western Australia
Department of Mines and Petroleum



Canning Basin

Blake
Sub-basin

Bangemall
Supergroup

Perth Basin

WESTERN AUSTRALIAN PETROLEUM ACREAGE RELEASE

MAY 2010

WESTERN AUSTRALIAN PETROLEUM **ACREAGE RELEASE** **MAY 2010**

**Canning Basin, Bangemall Supergroup, Blake Sub-basin
and Perth Basin**

Contents include Background Information; Applying for Acreage;
Land Access; Prospectivity and Available Data Listing

For further copies of the CD package
contact Senior Titles Officer, Petroleum Division
Department of Mines and Petroleum
100 Plain Street East Perth 6004 Western Australia
Phone: +61 8 9222 3106 Fax: +61 8 9222 3799
www.dmp.wa.gov.au

The information on this disk remains the property of the Western Australian Department of Mines and Petroleum and is covered by Crown copyright. Copying or on-selling of these data without prior written permission of the Department of Mines and Petroleum will be seen as a breach of copyright.

This product has been designed for the Windows operating system, and has been tested to run on Windows NT 4, Windows ME, Windows 2000 and Windows XP.

Western Australian petroleum acreage release, May 2010

Product available from First Floor counter, Mineral House, 100 Plain St, East Perth, WA 6004, AUSTRALIA. Or ordered through: www.dmp.wa.gov.au/ebookshop

Enquiries to Email: gsd.dda@dmp.wa.gov.au; Phone: +61 8 9222 3459; Fax: +61 8 9222 3444.

Cost: Free