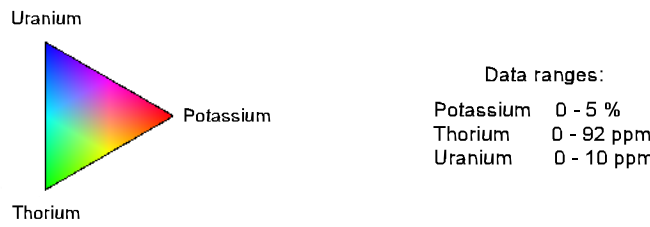
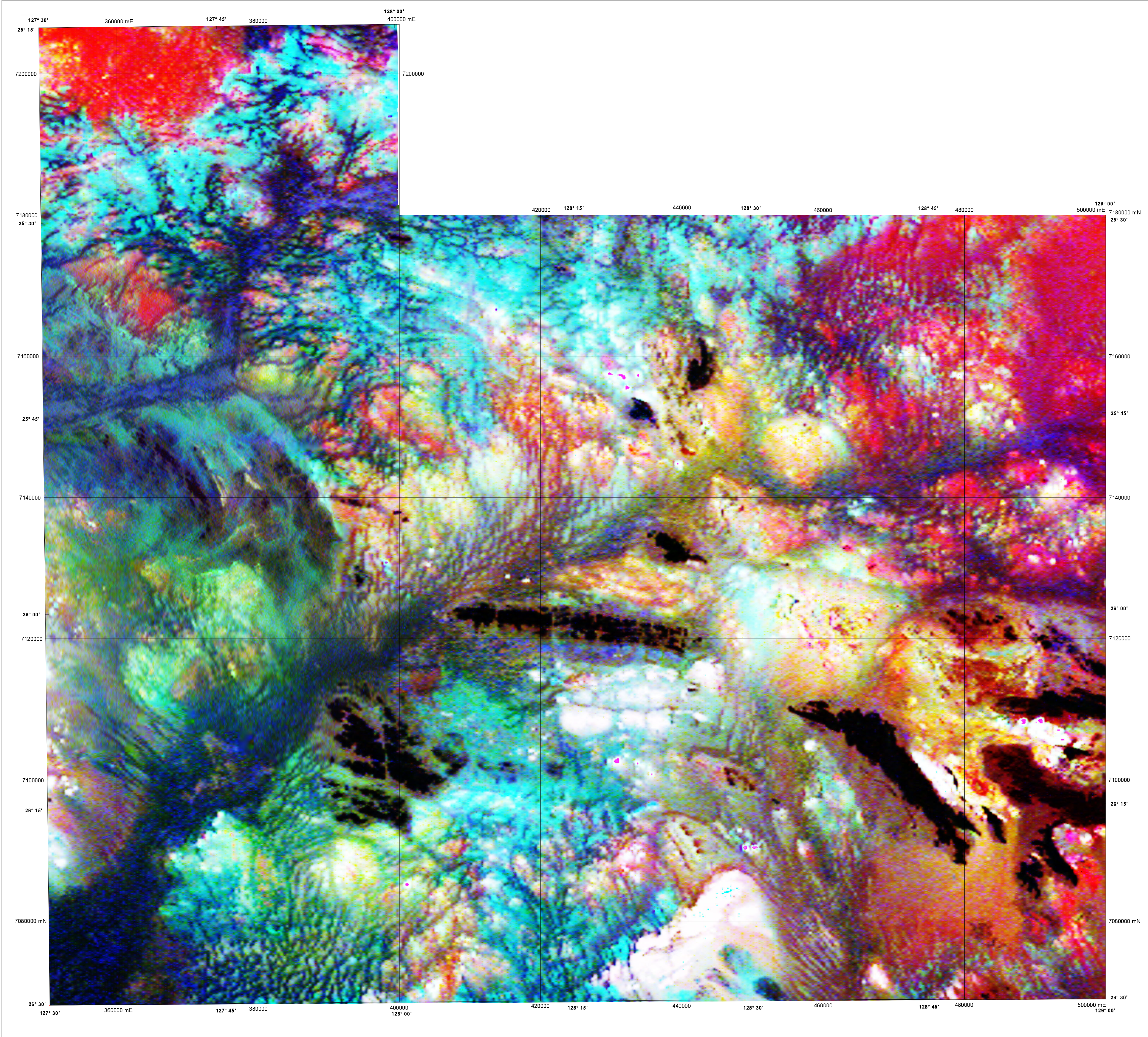


WEST MUSGRAVE

GEOLOGICAL SURVEY OF WESTERN AUSTRALIA

PART SHEETS SG 52-6 and SG 52-10

1:250 000 TERNARY RADIOMETRIC IMAGE



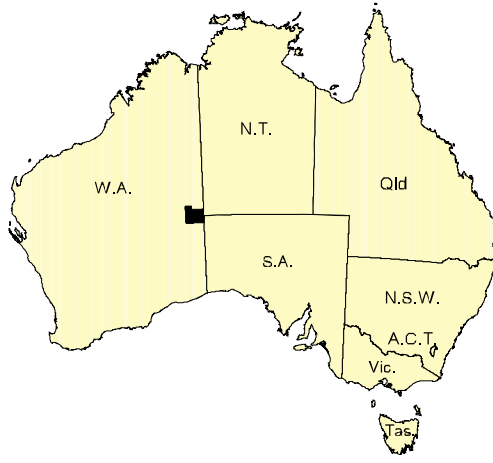
Data acquired in 2002 were merged with private company data flown in 1998, which now form part of the National Airborne Geophysics Database.

Published by the Geological Survey of Western Australia. Copies are available from the Information Centre, Department of Mineral and Petroleum Resources, 100 Plain Street, East Perth, WA 6004, Phone (08) 9222 3459, Fax (08) 9222 3444, [www.mpr.wa.gov.au](http://www.mpr.wa.gov.au)

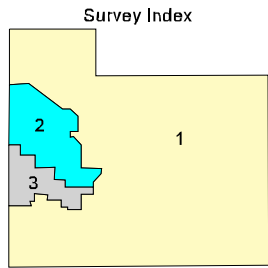
Secondary data processing R. Franklin  
Image processing J. H. Watt  
Cartography M. Vicentic  
Geophysics Project Manager S. H. D. Howard

These data are also available in digital form from Geoscience Australia Airborne Geophysical Data Sales, GPO Box 378, Canberra, ACT 2601.  
Phone (02) 6249 8478, Fax (02) 6249 9913, [www.ga.gov.au](http://www.ga.gov.au)

The recommended reference for this map is:  
GEOLOGICAL SURVEY OF WESTERN AUSTRALIA, 2002, West Musgrave, W.A.  
Part Sheets SG 52-6 and SG 52-10, Western Australia Geological Survey,  
1:250 000 Ternary Radiometric Image.

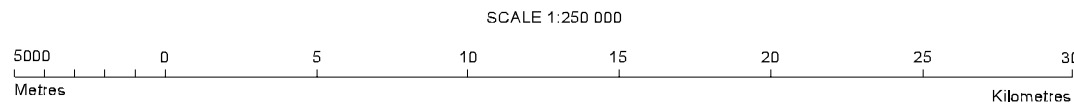


SHEET INDEX	
COBB SG 52-1	RAVUNISON SG 52-2
BENTLEY SG 52-4	SCOTT SG 52-5
TALBOT SG 52-8	SCOPPE SG 52-10
LENNIE SG 52-13	WIMBORN SG 52-14



This image is covered by the three surveys listed in the table below and shown on the survey index. The grid cell size is 90 m.

Survey ID	Survey Name	Line Spacing	Ground clearance	Crystal volume	Flight direction	Contractor	Date	Client
1	West Musgrave	400 m	80 m	33.6 l	0° - 180°	Fugro	2002	CSIWA / GA
2	Jameson	400 m	80 m	33.6 l	90° - 270°	Kerron	1998	WMC Resources Ltd
3	Jameson Infill	200 m	80 m	50.3 l	90° - 270°	Kerron	1998	WMC Resources Ltd



UNIVERSAL TRANSVERSE MERCATOR PROJECTION  
HORIZONTAL DATUM: GEODETIC DATUM OF AUSTRALIA  
Grid lines indicate 20 000 metre interval of the Map Grid Australia Zone 52

The Map Grid Australia (MGA) is based on the Geocentric Datum of Australia 1984 (GDA84).  
GDA84 positions are compatible within one metre of the datum WGS84 positions.

GEOLOGICAL SURVEY OF WESTERN AUSTRALIA

TERNARY RADIOMETRIC IMAGE  
Potassium, Thorium, Uranium as red, green, blue

WEST MUSGRAVE  
PART SHEETS SG 52-6 and SG 52-10  
First Edition 2002  
© Western Australia 2002